



Wednesday, December 11, 2019

151st Year • No. 50 • 18 Pages • \$1.50

MyEagleNews.com

High-speed chase ends after spike strip near Mt. Vernon

Driver's mother reported he threatened to kill her with a knife while on heroin

Blue Mountain Eagle

Several people were injured when a high-speed chase ended after officers deployed a spike strip just west of Mt. Vernon Friday afternoon.

Two people from Colorado and one from Oregon were transported to



Jeremy McLaughlin

the hospital after officers ended the pursuit at milepost 145 on Highway 26, according to Oregon State Police Public Information Officer Capt. Timothy R. Fox.

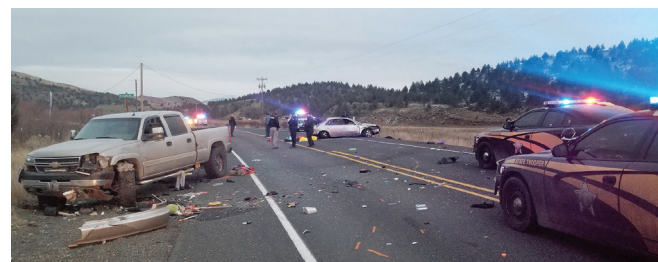
The driver, Jeremy McLaughlin, 29, Strasburg, Colorado, received minor injuries and was transported to jail after the hospital. He was charged



Robert Malloy

with eluding in a vehicle, reckless driving, five counts of reckless endangering, driving under the influence of drugs, second-degree assault, third-degree assault, possession of methamphetamines and possession of heroin, Fox said.

See Chase, Page A18



Contributed photo

A 1999 Honda Accord crashed into two pickups Friday afternoon after officers deployed spike strips following a high-speed chase that ended just west of Mt. Vernon.

GREENHOUSE grows to fruition



The Eagle/Rudy Diaz

The John Day hydroponic greenhouse grows lettuce, tomatoes, cilantro and more.

John Day's harvest available at Chester's Thriftway, Timbers Bistro and 1188 Brewing Co.

By Rudy Diaz
Blue Mountain Eagle

Fresh produce harvested in John Day is available for purchase locally — in December.

The city of John Day's hydroponic greenhouse has delivered its first products to local stores and restaurants, and more produce is expected in weekly deliveries.

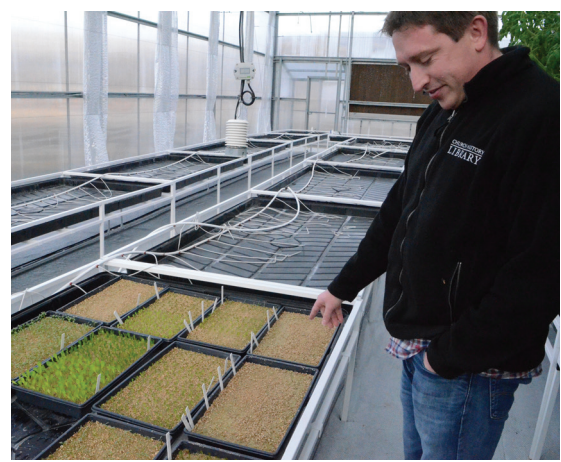
"We have received about three shipments from the greenhouse, and we have run out of those three shipments," said Erin Reilly, the produce manager at Chester's Thriftway. "The first shipment we got had about 50 heads of the butterhead lettuce ... Then they got us some green romaine, which were a little bit small, but we packaged 34 heads of those and

then sold it all within the first day."

The greenhouse currently produces red and green romaine lettuce, red and green butterhead lettuce, basil, cilantro, cucumbers and tomatoes. These items are ideal for starting a greenhouse because they are easy to produce and give the team time to optimize the space at the greenhouse before they go fully operational, said Adam Hening, the agriculture project leader in charge of production at the greenhouse.

Market demand and Hening's expertise will determine future items provided at the greenhouse.

See Greenhouse, Page A18



The Eagle/Rudy Diaz

Adam Hening, in charge of production at the greenhouse, talks about the various seeds he plants.

Owens campaigns for state representative in Grant County

Owens: 'I will go to all ends to make sure our voice is heard'

By Rudy Diaz
Blue Mountain Eagle

Republican Mark Owens is running to be the state representative in Oregon's House District 60.

Owens, a Harney County commissioner, met with community members and leaders Dec. 5 at The Outpost Pizza, Pub & Grill in John Day.

"The main takeaway from the event is learning to listen to people and learning to be their voice," Owens said. "There are a lot of similar issues between Harney County, Malheur County, Lake County, Baker County and here in Grant County."

A big concern for Eastern Oregonians is how people use natural resources and how to maintain local forests, he said.

"Forests issue is a huge conversation in Grant County as they should be," Owens said. "We need to figure out how to get more product out of the forest, reduce fire levels and get employees back to work."

Most of the forest issues are on federal land,



The Eagle/Rudy Diaz

Candidate for state representative Mark Owens, left, stands with Frances Preston at a campaign event in Grant County.

but Owens said he can do many things as a state representative to have the voice of the people heard.

"There are going to be some direct acts coming in the next two sessions in order to do more work," Owens said. "Having a strong voice there that understands we need to do commercial thin-

ning and pre-commercial thinning to get value off that and try to direct any funds that the state will allocate for federal match into our counties is really needed."

Owens continued by discussing the importance of the community in these conversations because they are the stewards over the forests. Eastern Oregon relies on logging customs and culture, which is something that Owens wants to maintain.

Grant County commissioners Jim Hamsher and Sam Palmer greeted Owens at the event. Working closely with county commissioners in Eastern Oregon is another priority for Owens.

The reason why Owens is running for representative is similar to why he ran to be commissioner in Harney County.

"Harney County has allowed myself and my family to live the American dream, which we were able to live through agriculture and the use of natural resources," Owens said. "I found that those opportunities that I had are becoming harder to find."

When asked what makes him stand out as a candidate, Owens talked about his ability to listen and how to bring a message to others.

See Owens, Page A18



7 29467 30001 9