



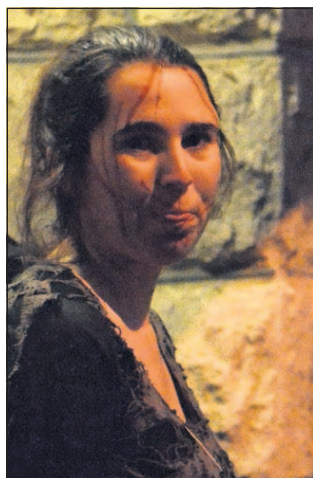
The Eagle/Angel Carpenter  
An actor in the Canyon City Haunted House gives a piercing stare on Halloween.



A spooky John Day home welcomes trick-or-treaters.



The Eagle/Angel Carpenter  
Travis Ryan, left, and Chelsea Giles wait in line Oct. 31 at the Canyon City Haunted House.



The Eagle/Angel Carpenter  
Abby Winegar leads groups through the Canyon City Haunted House on Halloween at the community hall.



The Eagle/Angel Carpenter  
Kaylie Perkins, 11, dressed as a unicorn, and her brother Sean Perkins, 7, dressed as a pea shooter from the 'Plants vs. Zombies' game help hand out treats at the Canyon City Fire Hall.

# HALLOWEEN FUN



Contributed photo  
Children enjoy activities at the youth Halloween party at the John Day Elks Lodge Oct. 30.



The Eagle/Angel Carpenter  
All in the spirit of Halloween fun, a 'patient' yells for help while being treated by an 'evil doctor' at the Canyon City Haunted House on Halloween.



Contributed Photo  
Halloween at the courthouse. From left: Amber Quinton, Julie Ellison, Tonya Hunt, Laurie Wright, Brooke Griffith and Shanna Hunt.

## Don't Miss These Great Kubota Savings!

### AT YOUR NEW KUBOTA DEALERSHIP

#### MALHEUR MACHINERY

**ALL-NEW RTV-XG850 SIDEKICK**

- 48.3 Gross HP,† Gasoline Engine
- Selectable Full-Time 4WD
- Up to 40 mph
- CVT-Plus Transmission
- Idle Speed Control (ISC)

**L2501HST**

- 24.8 Gross HP,† 3-Cylinder Kubota Diesel Engine
- 4WD
- Hydrostatic Transmission (HST)
- Performance-Matched Implements Available

COME SEE **JIM GIBBON** AT 211 HIGHWAY 20 S IN HINES!

**\$0 DOWN, 0% A.P.R. FINANCING FOR UP TO 60 MONTHS\* ON SELECT NEW KUBOTA TRACTORS & MOWERS**



**M6-141GXDTC-F**

- 141.4 Engine HP,† 4-Cylinder Turbocharged Kubota Diesel Engine
- Grand X Cab Offers Greater Comfort & Visibility
- Intelli-Shift Transmission
- Tilt & Telescopic Power Steering

**HARVEST RETURNS**



**M7-171-PS**

- 168 Engine HP,† 4-Cylinder Turbocharged Kubota Diesel Engine
- Multitasking Hydraulic System with 4-Speed Live-Independent Front 3-Point Hitch
- ISO-BUS Monitor





**211 HIGHWAY 20 S • HINES, OR**  
**541-573-1322 • 541-589-3877**  
[www.platteequipment.com](http://www.platteequipment.com)

\*\$0 Down, 0% A.P.R. financing for up to 60 months on purchases of select new Kubota : BX, B, L, MX and M, MH(M7), RB, DMC, DM, RA and TE Series equipment from participating dealers\* in-stock inventory is available to qualified purchasers through Kubota Credit Corporation, U.S.A.; subject to credit approval. Some exceptions apply. Example: 60 monthly payments of \$16.67 per \$1,000 financed. Offer expires 12/31/18. See us or go to KubotaUSA.com for more information. † For complete warranty, safety and product information, consult your local Kubota dealer and the product operator's manual. Power (HP/KW) and other specifications are based on various standards or recommended practices. K1053-24-141280-7

87834