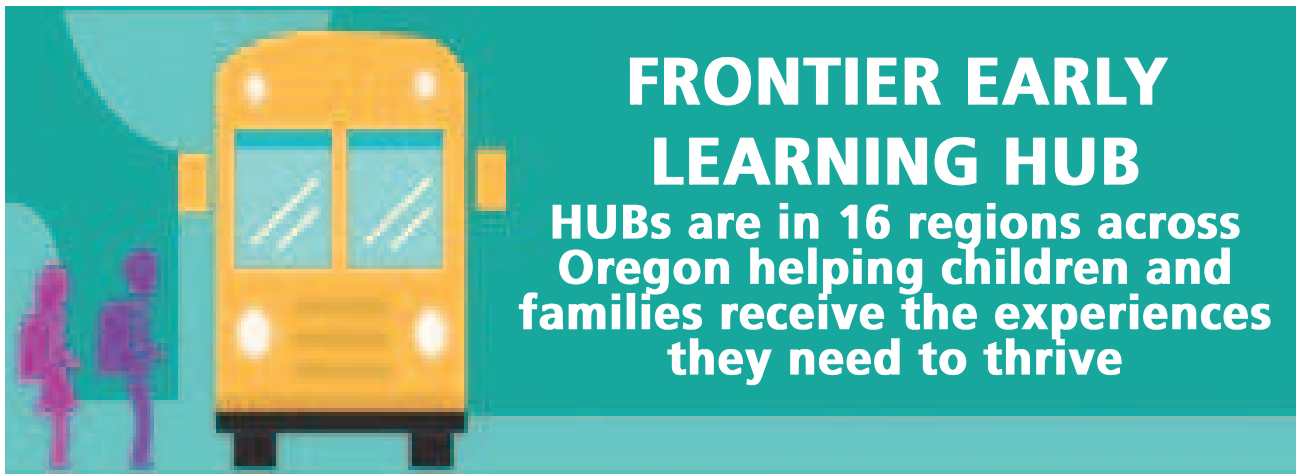


Parents Page

JULY 2018



FRONTIER EARLY LEARNING HUB
 HUBs are in 16 regions across Oregon helping children and families receive the experiences they need to thrive

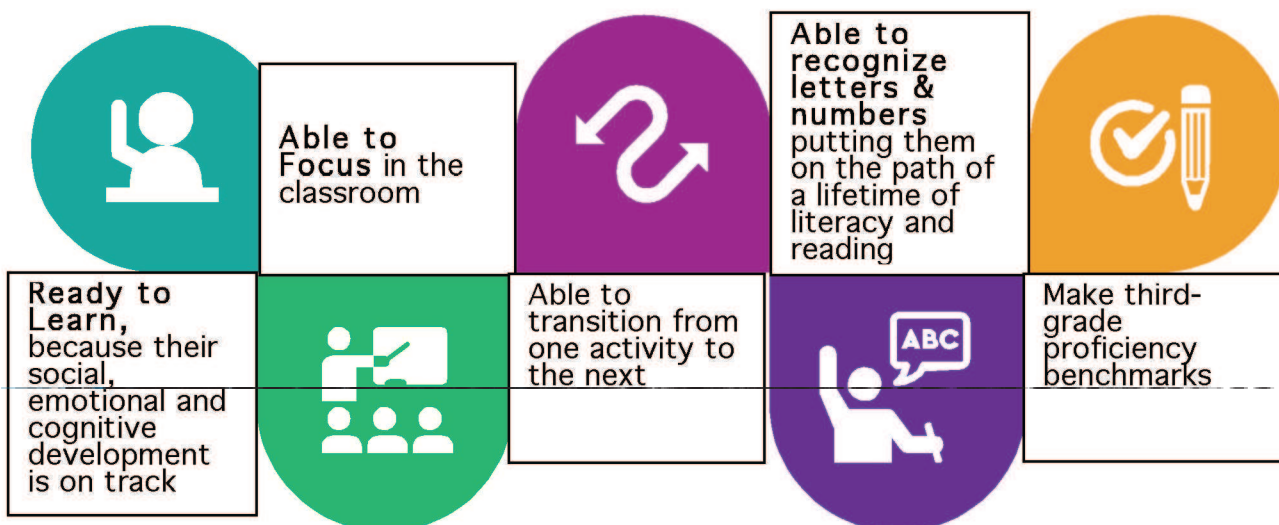
Why is early learning so important?

Decades of research has shown that the first five years are important brain building years that shape our children's futures. Quality early learning experiences are predictors of health, happiness, growth, development and learning achievement at school.

The Frontier Hub promotes early learning experiences. Some of those experiences are:

- Preschool and childcare programs with a curriculum
- Parenting classes and home visiting
- Dental checks with sealants and fluoride
- Well child check-ups
- Developmental screenings
- Immunizations
- Housing
- Adequate nutrition
- Mental health services
- Abuse free families

The Frontier Early Learning Hub works with local community partners to coordinate services that promote healthy, stable and attached families and ensure children are ready to learn when they enter kindergarten. What does ready to learn mean?



What can parents do?

- Read to your child daily
- Practice identifying and saying letters and numbers
- Eat meals together as a family
- Have a regular bedtime routine
- Develop a partnership with your child's teacher and caregivers
- Attend transition activities provided by your school district

This message is brought to you by the Frontier Early Learning Hub of Grant & Harney County. Together we can ensure that your child is healthy, happy and ready to learn.

BIOSMILE
 Family, Cosmetic & Implant Dentistry
 165 NW 1st St., | Open Monday-Thursday
 John Day **Kids ad...Free Orthodontic screening for children 7-17**
 541-575-0363
DrJ@BiosmileDental.com

ADVERTISE HERE
 Call the
EAGLE
 today
541-575-0710

Precious Smiles
 Deserve Special Care
 Comprehensive, gentle dental care through the years.

NEW PATIENTS and EMERGENCIES welcome
 Dr. Norm DeJong DDS, MPH, PC
 Melanie DeJong, RDH
 541-820-4369 -OR- 888-820-4369
 Prairie City, Oregon
prairiecityoregon.com

Strawberry Wilderness Community Clinic

 Zachary Bailey, M.D. Shawna Clark, DNP
 Emily Lieuallen, DO Raffaella Betza, M.D.
 Nora Healey, FNP Janessa Stickler, DO
 David Hall, M.D.
 541-575-0404
 Our full-service pediatric care center specializes in children's health needs, from birth to adolescence, with a focus on putting kids at ease.

FRONTIER Early Learning HUB

 Harney & Grant Counties
 541-573-6461 | 541-620-0622

Families First PARENT RESOURCE CENTER

 • Creating Great Beginnings
 • Inspiring Possibilities
 • Ensuring Bright Futures
 • Healthy Start and Parents as Teachers Home Visiting
 • Classes • Workshops • Parent-Child Playgroups
 • Car Seats • Parent Resource Library
 401 S. Canyon Blvd., John Day • 541-575-1006
ffedta@gmail.com • www.familiesfirstofgrantcounty.com

Community Counseling Solutions

CCS Changing Lives
 NO COST SCREENING
High Quality Services Include:
 Mental Health
 Alcohol and Drug
 Developmental Disability
 528 E. Main • John Day • 541-575-1466

OLD WEST

 Where people are more important than money.
 650 W. Main • John Day 575-0264
 162 NW Front • Prairie City 820-4601
 2036 Broadway • Baker City 523-5535
 800 SW Dorian • Pendleton 278-6805
Federal Credit Union

ADVERTISE HERE
 Call the
EAGLE
 today
541-575-0710