

Parents Page

FEBRUARY 2018

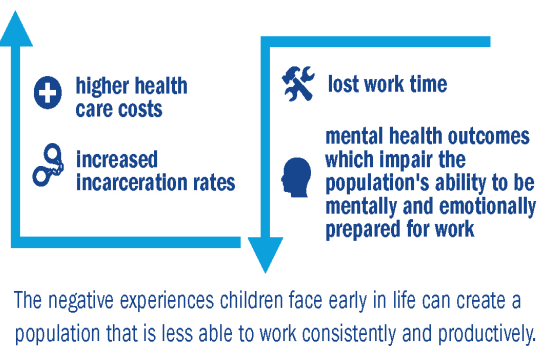
WOULD YOU INVEST IN A LONG-TERM STRATEGY BACKED BY DECADES OF RESEARCH TO INCREASE YOUR BOTTOM LINE?
 Good, invest in child development. Here's why:

WHY *do we care about child development?*

Because when we create healthier environments for all children, we're promoting a healthier and more productive nation. When we invest in children now, we don't have to pay later, as individuals or society. But this goal of a healthy and productive future is undermined by Adverse Childhood Experiences (ACEs).

WHY *does this affect me?*

ACEs not only lead to lifelong negative effects for the child who experiences them, but also creates a drain on businesses and taxpayers. Studies have shown that ACEs lead to:



WHAT *are Adverse Childhood Experiences?*

Adverse Childhood Experiences / ACEs/ noun
 A term used to describe a wide range of factors which may occur in the home under the age of 18 – such as emotional, physical, or sexual abuse; loss of a parent through divorce, death or incarceration; experiencing hunger or being exposed to violence – that can contribute to lifelong physical and behavioral health challenges. A child is more at risk for ACEs when the child's parents experience stressors like social isolation, underemployment, lack of health care, depression or the inability to access basic necessities.

The CDC estimates depression to cause **200 million lost workdays** each year at a cost to employers of **\$17 to \$44 billion**

Learn more about ACEs by visiting the Centers for Disease Control website at www.cdc.gov/violenceprevention/acesstudy.

HOW *can my business make a difference?*

Implement policies that help create healthier families and more productive employees such as flex-time for employees, which helps reduce the stress of managing family schedules while still being active and productive employees.

Use corporate sponsored events to inform employees about community services they can take advantage of that help create connections within the community. This can reduce the feeling of being alone or isolation and increase parental knowledge.

Use the important community and public policy capital that you have to promote federal and state policies that promote healthy families while helping to improve the future climate for your business.

Support funding for resources in your community that reduce parental stress such as pre- and post-school programs or funding for home visiting programs.

Government plays an important role in the promotion of safe, stable, nurturing relationships and environments for families which are proven to help reduce ACEs, but so do businesses.

We can promote great childhoods for all children and a brighter future for families and our country. You can help.



MAGNITUDE OF THE SOLUTION



Population attributable risk
 ACE reduction reliably predicts simultaneous decrease in all of these conditions.

- 2017 Status of Oregon Children and Families**
- 26.4% of Grant County youth (0-17) are living in poverty.
 - 25.1% of Grant County children experience food insecurity.
 - 56.1% of Grant County children are eligible for free and reduced lunches.
 - 7.8% unemployment in Grant County, compared with 4.9% in Oregon.
 - 20.9% of Grant County 3- and 4-year olds are in school, compared with 42% of Oregon 3- and 4-year olds.

Upcoming Opportunities to Learn More and Get Involved!
Be the Difference: Discovering the Missing Pieces for Helping Families Move Out of Poverty
 February 9, 2018, Grant County Regional Airport
 Topics Included:
 ∞ Trauma Informed Care 101
 ∞ Motivational Interviewing
 ∞ Positive Discipline
 ∞ Mental Health First Aid
 ∞ Grant County Trauma Informed Task Force

For more information contact:
 Tracey Blood: pcaorinfo@gmail.com
 Lisa Wiegum: lweigum@gobhi.net
 Katrina Randleas: ffhvk@gmail.com

Be The Difference: <small>Discovering the Missing Pieces for Helping Families Move Out of Poverty</small>	Presented by:
When: February 9th, 2018 9am - 1:30pm	Door Prizes!
Where: Grant County Regional Airport <small>72000 Airport Rd, John Day, Oregon</small>	Coffee, snacks, and (working) lunch provided. The poverty simulator will be completed during lunch.
Topics covered: -How poverty impacts our world view -Lived experiences of poverty -The power of mentoring -Fostering success -"What Money?" poverty simulator	Each participant will receive a copy of Donna Beegle's Action Approach Guidebook.
Free registration at: http://www.planetreg.com/E1171683431327	Sponsored By: Local Community Advisory Council (LCAC)

BIOSMILE
 Family, Cosmetic & Implant Dentistry
 165 NW 1st St. | Open Monday-Thursday
 John Day **Kids ad...Free Orthodontic screening for children 7-17**
 541-575-0363
DrJ@BiosmileDental.com

ADVERTISE HERE
 Call the
EAGLE
 today
541-575-0710

Precious Smiles
 Deserve Special Care
 Comprehensive, gentle dental care through the years.
NEW PATIENTS and EMERGENCIES welcome
 Dr. Norm DeJong DDS, MPH, PC
 Melanie DeJong, RDH
 541-820-4369 -OR- 888-820-4369
 Prairie City, Oregon
prairiecityoregon.com

Strawberry Wilderness Community Clinic

 Zachary Bailey, M.D. Shawna Clark, DNP
 Emily Lieuellen, DO Raffaella Betza, M.D.
 Nora Healey, FNP Janessa Stickler, DO
 David Hall, M.D.
 541-575-0404
Our full-service pediatric care center specializes in children's health needs, from birth to adolescence, with a focus on putting kids at ease.

FRONTIER Early Learning HUB

 Harney & Grant Counties
 541-573-6461 | 541-620-0622

Families First PARENT RESOURCE CENTER

- Creating Great Beginnings
- Inspiring Possibilities
- Ensuring Bright Futures

- Healthy Start and Parents as Teachers Home Visiting
- Classes • Workshops • Parent-Child Playgroups
- Car Seats • Parent Resource Library

 401 S. Canyon Blvd., John Day • 541-575-1006
ffedta@gmail.com • www.familiesfirstofgrantcounty.com

Community Counseling Solutions
CCS Changing Lives
NO COST SCREENING
High Quality Services Include:
 Mental Health
 Alcohol and Drug
 Developmental Disability
 528 E. Main • John Day • 541-575-1466

OLD WEST

 Where people are more important than money.
 650 W. Main • John Day 575-0264
 162 NW Front • Prairie City 820-4601
 2036 Broadway • Baker City 523-5535
 800 SW Dorian • Pendleton 278-6805
Federal Credit Union

ADVERTISE HERE
 Call the
EAGLE
 today
541-575-0710