

Can you name these items from years past?

(Answers at the bottom)



Trivia 1

From the Grant County Historical Museum, Canyon City.



Trivia 2

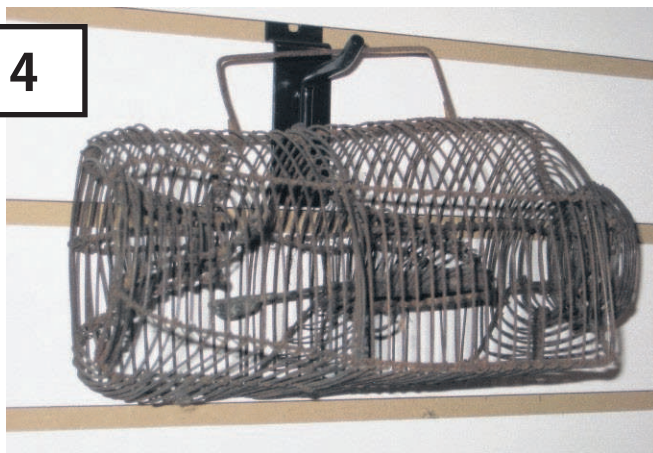
From the Grant County Historical Museum, Canyon City.



Trivia 3

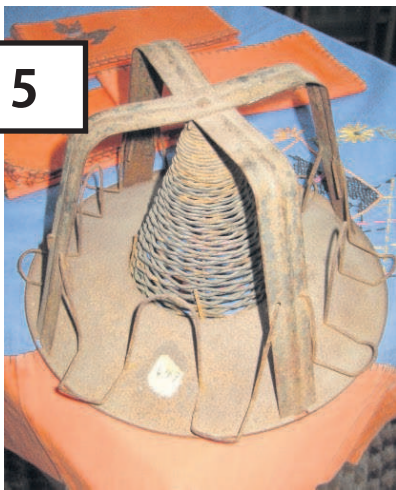
From the Long Creek Historical Society.

Trivia 4



From the DeWitt Museum, Prairie City.

Trivia 5



From the DeWitt Museum, Prairie City.

Trivia 6



From the Grant County Historical Museum, Canyon City.

Trivia answers:

- 1. Carpet stretcher
- 2. Huckleberry pickers
- 3. Iron
- 4. Mouse trap
- 5. Toaster
- 6. Bung tool

Area to be eclipsed Monday

Forecast not too good for sunny skies

Feb. 22, 1979

Blue Mountain Eagle



File photo

Residents of the Northwest will be treated to one of nature's rarest and most spectacular phenomenon next Monday morning when the region will be blacked out by a total solar eclipse.

WARNING: Serious and permanent eye damage can result from directly viewing the solar eclipse on Feb. 26, warns the Oregon Optometric Association. Looking directly at the eclipse for as little as 10 seconds can permanently injure the eye's retina. It happens without pain, but a person can suffer a permanent blind spot that eliminates the central point of vision.

The solar eclipse will be total in most of Idaho, Montana, North Dakota, Washington and Oregon. Starting shortly after 7 a.m. Monday, the moon will begin to creep across the sun's face — not literally — and for the next 50 minutes there will be nothing to see safely with the naked eye as the moon moves on.

Only a shadow box, constructed and used properly, will afford safe viewing of the partial stages of the event. It will be the region's first total eclipse since 1918 and the last one of the century in the country. The next eclipse in

the Northwest will be 2068. About 10 minutes before the totality, the light will begin to fade. Barnyard animals will begin to act confused and perhaps a rooster will start to crow, thinking dusk is approaching. One of the most fascinating aspects about the eclipse will be the "speeding shadow" that reportedly will come hurtling out of the west at 2,000 miles per hour just prior to totality. If you can get on a hillside with a view of 50 or more miles, it will look like a black speck for a moment before it races across the face of the earth. This will be the

moon's shadow.

At that point, totality is complete and if the skies are clear, stars will emerge from the heavens and planets Venus, Mercury and Mars will be visible.

While the John Day valley is out of the path of totality, the moon will block out the sun's rays for a few brief seconds before moving on.

By 9:30 the happening will have passed.

Editor's note: This article was published as it appeared in 1979, not correcting for the Aug. 21 eclipse.

Monument School gymnasium burns

Jan. 24, 1957

Blue Mountain Eagle

Monument residents were awakened early Friday morning by the fire, which completely destroyed the high school gymnasium. The blaze had gained so much headway before it was discovered that it was impossible to save anything of value from the building. Through the concentrated efforts of the firefighters the school itself was saved.

All of the sports equipment that was housed in the building, including the new football equipment that had never been used, was destroyed. Three movie projectors, a new screen and speaker and some musical instruments were also lost.

Spray High School issued an invitation to the Monument basketball squad to use their

floor for the Friday night game with Dayville and the Long Creek High School invited the players to use that court for practice sessions twice weekly

for the remainder of the season.

The building was covered by insurance, and a new gym will be constructed as soon as possible.

Tires LES SCHWAB of John Day

551 W. Main • 541-575-1346

We have proudly come running to serve Grant County since 1952

QUALITY VETERINARY HEALTH CARE, old fashioned hospitality.



JOHN DAY RIVER VETERINARY CENTER
 Colleen Robertson, DVM, Michael Nussbaum, DVM
 59989 Hwy. 26, John Day • 541-932-4428

LOCAL - NON-PROFIT - MEMBER OWNED SINCE 1988

PROUDLY SERVING OUR MEMBERS FOR 30 YEARS.
 OTEC is one of Oregon's largest non-profit, member-owned electric cooperatives serving over 30,000 meters in four counties with low cost, clean, renewable hydro-electric power.
400 PATTERSON BRIDGE ROAD - JOHN DAY - PHONE: 541-575-0161
FOR MORE INFORMATION VISIT: WWW.OTEC.COM

06114