



John Day Basin Office

Oxbow Conservation Area

Forrest Conservation Area

The Confederated Tribes of Warm Springs has a long tradition of natural resource stewardship. The John Day River basin is within the Tribes ceded lands and supporting sustainable agriculture and watershed restoration efforts are an important part of maintaining cultural foods and fish populations.

John Day Basin Office • 320 W. Main Street • John Day, OR 97845
(541) 575-1866 • wsfish.org

126616



**Proudly Serving Grant County
Since 1966**



AUTO & TRUCK PARTS



**JOHN DAY
AUTO PARTS**
721 W. Main St.
John Day
541-575-1850
Open Mon-Fri
7 a.m. - 6 p.m.
Sat 8 a.m. - 5 p.m.
Closed Sunday



View at: rmls.com, centraloregonrealtors.com,
oregonranchandhomes.com/dukewarner

**"Your professional Real Estate
choice in Grant County"**

Lori Hickerson , Principal Broker, GRI Office: 541-575-2617
Sally Knowles , Broker, GRI Office: 541-932-4493
Babette Larson , Broker, GRI Office: 541-987-2363



PONY EXPRESS 4-PLEX+!
Providing temporary housing
for park employees/visitors,
USPS lease, rental house.
\$320,000 OWC
RMLS #16538042



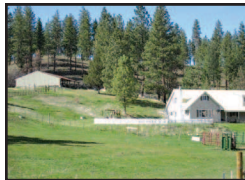
**JOHN DAY HOME
ON 39 ACRES!**
Views, Cedar sided home,
garage, 3 greenhouses, barn
w/shop area, fenced.
\$399,500
RMLS #17144491



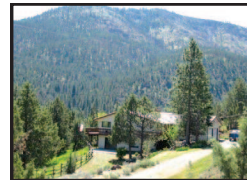
166 ACRE HAY RANCH!
160 Iri, 3 pivots, 2 large
hay sheds, shop, barn,
corrals, fenced, MF home,
well. **\$900,000**
RMLS #16373459



SOUTH FORK RANCH!
River frontage, 205 ac, 50 irri,
views, 3 bd, 2.5 bath, LOP
tags, shop, fenced.
\$679,000
RMLS #16466846



**13 ACRES OF GREAT
HORSE PROPERTY!**
Views, 2 story home, 2
ponds, shop, hayshed/barn
& irri meadow. **\$499,000**
RMLS #17051972



**FAMILY HOME
ON 36 ACRES!**
Daylight basement, ATV
sheds, small barn, deer fenced
courtyard makes a great
summer retreat area. **\$425,000**
RMLS #16452348



85 ACRE RIVER RANCH!
Near Monument, equipment
shop, hay cover, barn w/
working corrals, home,
garage. **\$535,000**
RMLS #17501846



**560 AC OFF GRID
BEAUTY &
SECLUSION!**
2/2, barn, shop, creek,
LOP tags. **\$1,250,000**
RMLS #15128485



240 ACRES w/CABIN!
Private, secluded, remote,
limited winter access.
\$180,000 OWC
RMLS #16557352

05705_FG17