

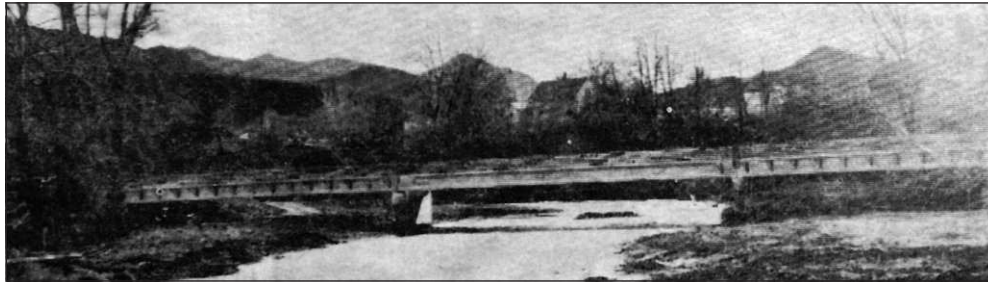
## OUT OF THE PAST

Blue Mountain Eagle  
Feb. 20, 1942  
75 years ago

## Hospital addition is contemplated

The Blue Mountain General Hospital Association, a non-profit charitable corporation, has announced plans to build a new unit on the east side of the present hospital building in Prairie City, Oregon, as soon as necessary funds can be raised.

The present hospital building was built in 1940 and is believed to be the best-equipped hospital in the entire region and has been filled to capacity almost continuously since its completion. In order to facilitate the successful handling of the increasing number of patients served, it has been recently found necessary to add another physician and surgeon to the hospital staff. Dr. Val Chronovsky has come from Oregon City, where he practiced medicine for several years, and has been rated highly by the medical profession. The hospital and clinic are now completely equipped with instruments and supplies and when additional space is provided will be ready



Eagle file photo

**From Feb. 23, 1967: BRIDGE TAKES FORM — With the completion date scheduled for summer, prestressed concrete beams were installed during the week for the Dayville bridge spanning the South Fork at the east entrance of Dayville. The 284-foot bridge will provide safer approaches by eliminating two sharp curves which serve the present bridge. A Bend firm, R. L. Coats, is the contractor for the \$287,131 bridge project.**

to handle any emergency. The laboratory, which is modern in every respect, is given a class A rating by the State Medical Examining Board.

There are only three such laboratories in Oregon east of the Cascades. Due to the large range of services this hospital offers, the present building has been found already to be inadequate and a new wing, more than doubling the present bed capacity, is found necessary to meet the needs of the communities served. It is estimated that while the new wing will more than double the present patient room, the cost of construction

will be less than half of the present building.

This is due to the fact that the present surgery will not need enlarging and to the further fact that the heating system, laundry, kitchen, laboratories, etc., are ample to take care of the additional rooms. The board of trustees of the Blue Mountain General Hospital Association, of which Dr. G.G. van der Vlugt is chairman, believes that the enlarging of this hospital and the making available of additional space for the care of patients is in keeping with this country's war effort. It is estimated that \$15,000 will be

required to build the new wing as it is planned. This sum is to be raised by contributions from the territories served by this hospital. Considerable funds have already been pledged.

Blue Mountain Eagle  
Feb. 23, 196750 years ago  
G. L. Pine Implements  
New Veneer Product

After introducing the first veneer plant in eastern Oregon, G. L. Pine, Inc. has implemented another first in the timber product manufacturing industry in the region. Box material made of rotary-cut wood for

wire-bound vegetable and fruit containers promises a brighter future for utilization of associated species in the commercial timber product industry.

By utilizing the available timber supply, it is possible to increase production benefiting the local area without exceeding the allowable cut on the national forest. G. L. Pine began production of box material in January with a crew of 12 women. Demand for the material has resulted in an increase of production and a larger crew of 25 women. Another shift may be added in the near future, according to Glen Lee of the John Day firm.

The new operation complements regular logging industry by utilizing Douglas fir, white fir and western larch, which have a limited market value in Eastern Oregon. Ponderosa pine is not used for the box material. Approximately 200,000 small strips of veneer are produced daily by G. L. Pine.

The material is about four inches wide and 24 inches long. It is shipped to California where it is made into vegetable and fruit boxes. G. L. Pine is the first plant in Eastern Ore-

gon to produce the box material, according to Lee. With additional equipment and facilities, production should double if the present demand continues, said Lee. More man-hours per thousand board feet are involved in producing box material than other forms of local timber product manufacturing. Lee estimates that it takes about 25 man-hours to produce a thousand board feet of box material. An average lumber mill uses only about three to five man-hours to make a thousand board feet of lumber. Further utilization of wood material is being planned by the John Day firm. G. L. Pine installed the first veneer plant in the eastern Oregon region in 1960. Since, plants have been built in Hines by Edward Hines Lumber Co., Baker by Ellingson Timber Co., and more recently in Mt. Vernon by the Seneca Lumber Co., which is operated by the Astoria Plywood Corporation. Approximately 50 persons are employed by G. L. Pine, which includes a stud mill and a planer operation. G. L. Pine is a complete operation. It does its own logging, hauling and manufacturing.

SENIOR  
Outlook

Chester's

Prairie City  
Seniors

Rose Coombs



Indispensable: that which cannot be dispensed with or neglected; absolutely necessary or required, syn. essential. Today was proof that no one is indispensable around here. Harold was gone

again so Bruce announced. Buzz was gone so Frances took his place on the deliveries and Jim Hamsher led the flag salute. I was gone so lots of people took notes for me. And guess what? Everything went on as scheduled! That's the way it should be. Thanks and appreciation to those who stepped up to fill the gap.

Harold did do the set-up before he left, so he fulfilled one responsibility. Ken, Carlos, Larry, and Frances took care of the deliveries. Fran Bunch, Julia Davis, and Carla Wright helped in the kitchen and with serving. A get well card for Buzz was signed. The \$5 in trade gift certificate towards a meal donated by Chuck's Little Diner went to Judy Nelson. Oh, goody, some new names! Welcome to the neighborhood.

Lorna and Krystin brought Dorothy Blasing, Lois Hill, Marilyn Randall, and Otho Laurance from the Blue Mountain Care Center. I was told that there were the cutest little red decorations on the tables for this special meal. There was roast beef, baked potato and gravy or sour cream, pickled beets, rolls, and pineapple upside down cake with

whipped cream for dessert. And I missed it. Hope you enjoyed it, all 57 of you who were listed on the registration book. And there is no snow!!! Green grass on the ground now. The garden seeds are being displayed already. Well, let us not get in too much of a hurry. After all it's only February.

Remember I was gonna curl up with a book? It was an overview of the life of Paul Harvey and 60+ years of radio programs. There was an unwritten rule in my house that no one was to call when his program was on. Too bad we don't have anyone like him today.

Other books I'm working through include one titled MICROCOSM - Portrait of a Central European City. The city is now called Wroclaw, in Poland. Since its founding, before 1000 AD, it has gone by various names, according to which ruling country was in power. Some of them are Vratislavia, Breslau, Vretslav, and two names I can't tell you because they are in Hebrew and Russian.

Polish friend Marek lives in Wroclaw and he took us on a fast walking tour around when we were in Poland for son #1's wedding. If I had read this book first, I might of been more appreciative of what I was seeing in 2006. My point is, our county, city, and state have been known by the same name since they were founded. It is fairly easy to come up with a history of them. Wroclaw has gone through numerous name changes, political changes, and religious changes in its history. And the author meticulously goes through all of them. Almost 600 pages worth. After three years, I'm almost halfway. Whew. *Hebrews 13:14 For here we do not have an enduring city, but we are looking for the city that is to come.*

John Day  
Seniors

Alma Joslin



On Feb. 13, we had a small group of approximately 25 diners for a lunch of tacos, spanish rice, Mexican corn chowder and cooled it all off with ice cream (yummy).

Francis and Bonnie Kocis delivered 38 lunches out plus 40 frozen to shut ins. The folks from Step Forward did the Mt. Vernon route - you people are really appreciated. At the front desk were Drew Harmer and Jeanette Julsrud. Our servers were Francis and Bonnie, Buzz and Bobbie Gilmore, Betty Holznagel and Jeanette Kile from the Redeemer Lutheran Church. Francis led the flag salute and Buzz asked the blessing.

Veanne extended a thank you to Eric and Jeanette Julsrud for the refrigerator. On Feb. 23rd, Community Counseling Solutions will be serving.

Billie Bullard won the Len's Drug gift card and Jean Willey won the meal for two at Valley View.

Feb. 16, we had approximately 50 people dining at the center. We had

pork chop mozzarella, new potatoes with peas, french bread, fruit salad and almond cookies. Jan Ellison furnished the entree.

Nicky Essex, a new site council member, and Bonnie Kocis greeted us at the front desk.

The John Day Firefighters delivered 38 meals out with Step Forward again taking the Mt. Vernon route. The firefighters then came back and served us. Helping were Don Gabbard, Ron Phillips, Eric Smith, Tommy Smith and Steven Stinnett.

Shay from the kitchen sends a big thank you to Chester's Thriftway for the case of new potatoes they donated.

What a bunch of gentlemen on the fire department. They even opened the doors for us as we came in, thanks. Veanne still needs durable medical supplies. Remember when you borrow supplies from the center they do not come with a warranty. Buzz Harris is ill.

Merrie Henry won the Christer's Thriftway gift card and Marie Smith won the lunch for two at Valley View.

On Feb. 23, we will have Swedish meatballs with noodles and on Feb. 27, we will have spanish Omelettes, sausage, hash browns, and fruit. *Hebrews 13:14 For here we do not have an enduring city, but we are looking for the city that is to come*

Monument  
Seniors

Soo Yuhawa



The dreaded mud is finally here. I've come a long way from being a germophobe. Can you believe that I was one of those people from California who would not let their kids play with mud? Ha. I'm

totally, ok well, mostly over the dirty hands and clothes thing. I think my friends from California would be shocked. I guess, I realized I just had to let that go and not stress over it so much. I received some very good information for when to start some of my seeds from a great gardener here in Monument after he read last week's article. I shall heed his advice and start my tomatoes and peppers 60 days prior to planting. I plan on planting a bunch of Anaheim peppers to create a spicy, pickled Korean side dish. I need to eat something Asian and spicy every few days for comfort food. If I don't eat rice at least once a week, I don't feel well, literally.

Speaking of eating, I've been watching the goats eat their dried grass and alfalfa. I know this may sound silly and weird but when I hear them munching away, it almost makes me feel like I want to taste it too. Their crunching and munching sound, sounds so yummy! The sounds they make are very noisy too.

Well, on to human food and edible things. For our Valentine's Day meal, our cooks Terry Cade, Carrie Jewell, and Christy Howell made some delicious chicken fried steak, mashed potatoes and gravy, cooked veggies, dinner rolls, and red velvet cupcakes. We sure were lucky to have such a nice treat! Thanks to our wonderful cooks. There were 44 guests on the books along with nine takeouts. Our greeters were Bob Blakeslee, Bodean Andersen, and Marva Walker. Bob led our flag salute. Bodean made the announcements and prayed the blessing over the meal. Max Breeding won the Len's Drug gift card. Charlotte Barker and Bruce Strange won free meals to the senior center.

We welcome Ron Odette and Janice Werner back home. They both had surgeries and we pray that they continue to heal up and do well. Dinah Cowger is back home from the hospital after suffering a stroke but is now in Bend for physical therapy. If anyone would be interested in helping to deliver some meals to her and Jerry when they return, please let me know and it would be much appreciated. This is a great opportunity to show support and love for our community and neighbors.

Don't forget that we will have sewing on Saturday, Feb. 25. From 9am-3pm. We will also be having Bingo night in the evening at 6pm. Both of these events will share a potluck meal. If you come to both, you will be set for lunch and dinner! Ha.

*Galatians 5:14 For all the law is fulfilled in one word, even in this; Thou shalt love thy neighbor as thyself.*

**Keep Your Smile Healthy!**  
Dr. Norm DeJong DDS, MPH, PC  
Melanie DeJong, RDH  
541-820-4369 -OR- 888-820-4369  
Prairie City, Oregon  
prairiecityoregon.com

NEW PATIENTS  
and  
EMERGENCIES  
welcome

• Cataract  
• Glaucoma  
• Macular  
Degeneration

**JOHN DAY  
EYE CARE**  
541-575-1819  
www.johndayeyecare.com

**BIO SMILE**  
Family, Cosmetic & Implant Dentistry

165 NW 1st St., John Day Open  
541-575-0363 Monday-Thursday

[DrJ@BiosmileDental.com](mailto:DrJ@BiosmileDental.com)

**Strawberry Wilderness  
Community Clinic**

We offer a wide range of primary  
care and medical treatment.

Zachary Bailey, MD • David Hall, MD • Nora Healey, FNP  
Shawna Clark, DNP • Emily Lieuallen, DO • Dana Shuey, DNP

Available Monday - Friday  
180 Ford Road, John Day • 541-575-0404

**A Fine Senior Menu**  
Open Everyday at 5 a.m.

• Full Breakfast  
starting at \$5.99  
• Lunch & Dinner  
starting at \$6.99

**The Outpost**  
Pizza, Pub & Grill

201 W. Main St., John Day | 541-575-0250

**Blue Mountain  
HOSPITAL DISTRICT**

Quality Healthcare  
...close to home.

**Blue Mountain  
Hospital**  
170 Ford Road  
John Day  
541-575-1311

**Blue Mountain  
Care Center**  
112 E. 5th  
Prairie City  
541-820-3341

**Blue Mountain  
Surgery**

Located in the Blue Mountain Hospital

**Keith J. Thomas, MD, FACS**  
Board Certified General Surgeon  
Office Hours by Appointment • 541-575-1311

**DRISKILL  
MEMORIAL CHAPEL**

241 S. Canyon Blvd. John Day • 541-575-0529

**Complete Selection of Services  
and Merchandise for your  
Consideration**  
Troy Hanson - Funeral Director