



Your Taxes



The Eagle/Sean Hart
Tidewater Contractors employees, including Prairie City resident Hal Gilliam, right, finish paving the parking lot for the new John Day fire hall May 10, 2016. Temporary bonds collected with property taxes helped fund the new hall.

27 districts receive more than \$7 million in property taxes each year in Grant County

By Sean Hart
Blue Mountain Eagle

In Grant County this year, more than \$7 million in property taxes will be collected. The money is distributed to 27 different taxing districts in the county based on individual tax rates for each district.

Several of the districts encompass the entire county: the Education Service District, Blue Mountain Hospital, Grant County and Extension and 4-H.

Most of the districts, however, cover smaller areas, such as school districts, cities,

rural fire districts and cemetery districts. The John Day and Canyon City areas are also covered by a parks and recreation district.

In addition to the county-wide districts, most properties in the county are taxed by one school district and one cemetery district, as well as either one city or one rural fire district.

Taxes are based on the assessed value of a property, and the annual tax rates are often expressed per \$1,000 of the assessed value. So,

Editor's note: This overview kicks off the Eagle's "Your Taxes" series, in which we will examine all 27 taxing districts in Grant County so you know where your property taxes are going.

a property assessed at \$100,000 with a rate of \$1 per \$1,000 would pay a tax of \$100.

Overall, district tax rates range from \$0.1673 for Prairie Cemetery District to \$6.0017 for the city of Seneca.

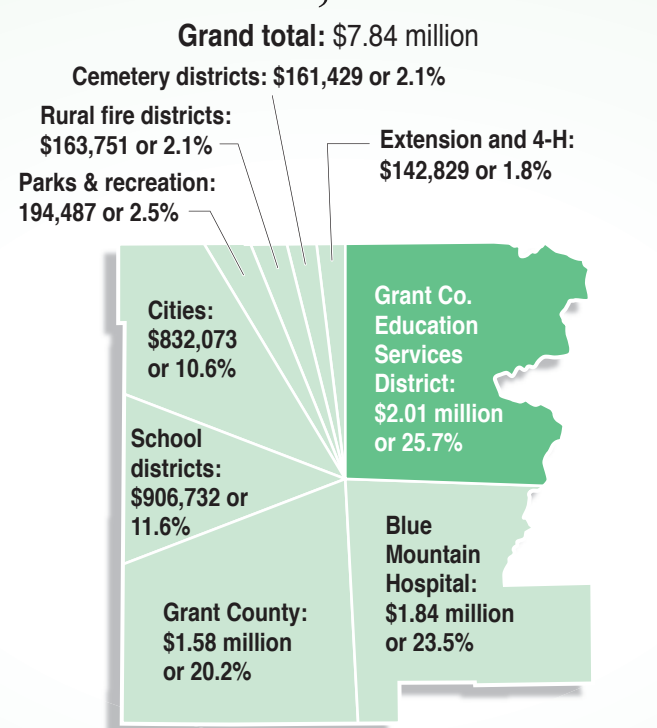
Grant County Assessor David Thunell said Measure 5, passed by Oregon voters in 1990, limits the total amount of property taxes that can be levied on a property. These limits are based on the real market value of the property, not the taxable assessed value. He said, for general govern-

ment, the limit is \$10 per \$1,000 of real market value, and for education, the limit is \$5 per \$1,000 of real market value.

Six county taxing districts — Blue Mountain Hospital, John Day Rural Fire District and the cities of John Day, Canyon City, Long Creek and Mt. Vernon — have also secured voter approval to levy additional bonds for specific projects. These temporary bonds have separate rates from the permanent tax and do not count toward the maximum limits.

With tax and bond rates combined, total rates in Grant County range from \$11.841 to \$18.1992 per \$1,000 of assessed property value.

Grant County property tax breakdown, FY 2016-17



Cemetery districts	Rate†	Net tax collected
Mid-Co.	0.301	\$100,699
Prairie	0.1673	12,930
Monument	0.566	23,926
Long Creek	0.2521	9,823
Dayville	0.257	8,852
Fox	0.7619	5,200
Total		\$161,429

Rural fire districts	Rate†	Net tax collected
John Day RFD	1.1862	\$103,712
Permanent*	0.5941	51,944
Bond*	0.5921	51,769
Mt. Vernon RFD	1.0012	40,915
Prairie RFD	0.4901	19,124
Total		\$163,751

Parks & Recreation	Rate†	Net tax collected
	0.7484	\$194,487

School districts	Rate†	Net tax collected
Dayville	2.2213	\$68,490
Monument	1.8868	81,575
Long Creek	1.6643	70,281
Grant	1.6468	554,972
Prairie City	1.5913	131,413
Total		\$906,732

Countywide	Rate†	Net tax collected
Blue Mountain Hospital	3.3523	\$1.84 million
Permanent*	2.1329	1.17 million
Bond*	1.2194	670,403
Grant County	2.8819	1.58 million
Grant Co. E.S.D.	1.6468	2.01 million
Extension and 4-H	0.2598	142,829
Total		\$5.58 million

Cities	Rate†	Net tax collected
Seneca	6.0017	\$33,325
Canyon City	5.1245	164,102
Permanent*	3.9998	128,705
Bond*	1.1247	36,190
Prairie City	4.0826	156,232
Long Creek	4.0755	27,472
Permanent*	2.2776	15,353
Bond*	1.7979	12,119
Mt. Vernon	3.7824	75,769
Permanent*	2.5348	50,793
Bond*	1.2476	25,000
John Day	3.6396	354,389
Permanent*	2.9915	291,439
Bond*	0.6481	63,139
Monument	2.7052	12,915
Dayville	1.1554	7,869
Total		\$832,073

NOTE: Totals may not equal 100 due to rounding.
*Estimate, not accounting for truncation and compression. † Per \$1,000 assessed value
Source: Grant County Assessor's Office
Research by Sean Hart, illustration by Alan Kenaga/EO Media Group

New year brings new laws

By Jade McDowell
EO Media Group

The 2016 legislative session was a short one, but Oregon lawmakers had enough time to approve a hand-

ful of new laws that went into effect Jan. 1.

Some — like a law authorizing the governing body of Tillamook County to establish wetlands — apply to a very narrow segment of the

state's population. But others will affect all Oregonians.

As always, not knowing about a new law is not a valid legal defense if you get caught breaking it.

Criminal impersonation

Sending intimidating emails to your neighbor while pretending to be the city planner is now a crime.

Senate Bill 1567 makes it illegal to impersonate a public servant, vet-

eran or member of the Armed Forces with the intent to cause another person injury.

The new law applies even in cases

See LAWS, Page A18

County declines request to cover Sheriff Palmer's legal fees

By Sean Hart
Blue Mountain Eagle

The Grant County Court does not intend to cover attorney fees for Grant County Sheriff Glenn Palmer related to a public records lawsuit filed by The Oregonian newspaper.

In a unanimous motion Dec. 28, after the court members said, after investigation, they will not pay the \$78,000 in attorney fees requested by The Oregonian, or fees incurred in Palmer's defense, because the lawsuit was not covered under the Oregon Tort Claims Act. They also



Sheriff Glenn Palmer

requested county attorney Ron Yockim to further investigate the matter and said they may revisit it.

The Oregonian requested the attorney fees after suing Palmer, the sheriff's office and Civil Deputy Sally DeFord, requesting a judge to declare certain records to be public records and to compel their disclosure, according to documents filed in Grant County Circuit Court. The

Oregonian said in the documents Palmer refused to produce the records before the lawsuit, which entitles them to attorney fees.

Palmer, DeFord and their attorney have not responded to questions about the lawsuit and did not immediately respond to emailed questions about the county's recent decision.

County Judge Scott Myers said attorney D. Zachary Hostetter, who represented Palmer and DeFord in the lawsuit, told the county it would be responsible for

See PALMER, Page A18

Winegar named new fair manager

By Rylan Boggs
Blue Mountain Eagle

Mindy Winegar officially started as Grant County Fair manager Dec. 26.

The former fair secretary has been under guidance of former fair manager Mary Weaver for months and had a big hand in putting together last year's county fair.

Winegar worked as the fairgrounds secretary for a year and a half and is waiting until she becomes acclimated to the new job before she hires a replacement secretary. She is excited about the promo-



Mindy Winegar

tion and said she is looking forward to the challenge of putting on the fair.

"Mary has really grown the fair a lot and I just hope to continue to keep it growing," Winegar said. Winegar said she is not planning any drastic changes but has a few projects planned, such as installing a public address system Weaver worked

See FAIR, Page A18