

Lust for gold leads to the end of a rope

First Canyon City hangings dredged up by the draw to the area

July 14, 1950

Blue Mountain Eagle

Berry Wey, a man who murdered his mining partner Gallego to obtain \$80,000 in gold dust, was the first man to be hanged in

Canyon City — in 1863. Some men, discovering the body of Wey's victim, reported to the miners in Canyon City, and Wey was trailed into Idaho to be captured by a deputy sheriff. Wey was taken from the custody of the

deputy and, although given a temporary respite by the attempts of Ike Hare, who pleaded for him, was convicted in a miners court, sentenced to hang — and the next day hanged. The second man to be hanged in Canyon City: In 1865, a man named Sullivan hired a man named Cain to help him work his placer claim. Sullivan didn't know about

mining, it seems — he had the idea that gold could be found any place along Canyon Creek, and did not realize that unless a pay streak was hit that he might not find anything. He had told Cain that, when he cleaned up, Cain would get his money. When Cain found that there was no gold to be cleaned up and that Sullivan couldn't pay him, he pulled an old fash-

ioned cap and ball pistol and shot Sullivan. Sullivan fell into the flume carrying Canyon Creek waters and floated away. Cain was tried in the circuit court and, although defended by four lawyers, among them Joaquin Miller, the "Poet of the Sierras," he was convicted and sentenced to hang. He was executed Aug. 3, 1865.



Contributed photo/Grant County Historical Museum

Pat McGinnis. Hanged on April 2, 1889, after killing a sheriff's deputy. This picture was taken two hours before his execution.

Can you name these items used in years past?



Trivia 1



Trivia 2



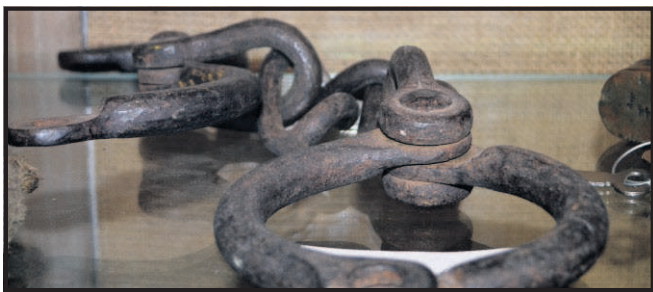
Trivia 3



Trivia 4



Trivia 5



Trivia 6

Trivia answers

- 1.) Palm thimble — worn while stitching canvas hoses, which were used for hydraulic mining.
 - 2.) Calculator — used with a pencil to move the dials.
 - 3.) Fluting iron — a seamstress would use to make decorative edges for cuffs and collars on clothing.
 - 4.) Director's baton — This baton was given to George H. Cattanch, director of the Canyon City Brass Band in 1921.
 - 5.) Gun powder measure — used to measure gunpowder in the 1800s.
 - 6.) Leg cuff hobbles — used in the mid-1800s to restrain a prisoner's movement.
- Canyon City's Grant County Historical Museum staff provided information on the items, displayed at the museum, for the history trivia.



Contributed photo/Grant County Historical Museum

The Masonic Hall (current day building housing the Grantville Theater and Canyon City Community Hall), circa July 1931.

WE'VE GOT COMPANY HISTORY!
Serving Grant County for 59 years.

LAND TITLE COMPANY OF GRANT COUNTY
145 NE Dayton, John Day • 541-575-1529

Tires LES SCHWAB of John Day
551 W. Main • 541-575-1346

We have proudly come running to serve Grant County since 1952

WE CAN TAKE YOU THERE

PEOPLE MOVER
Grant County Transportation

www.grantcountypeoplemover.com

SAVE ON GAS
DIAL-A-RIDE 541-575-2370
John Day, Canyon City, Mt. Vernon, Prairie City areas
M-F 8am - 5pm • Sat. 9am - 4pm

BEND RUN Mon, Wed, Fri.
WALLA WALL RUN Every Tuesday
BURNS RUN 1st, 3rd & 5th Thursday
MONUMENT RUN Every Thursday
Reservations Required
BAKER RUN 2nd & 4th Thursday

DUKE WARNER REALTY

Representing All Eastern Oregon Real Estate
Since 1967

Give us a call for a list of availabilities

Lori Hickerson, Principal Broker, GRI • 541-575-2617
Sally Knowles, Broker, GRI • 541-932-4493
Babette Larson, Broker, GRI • 541-987-2363

www.oregonranchandhomes.com/dukewarner
www.rmls.com / www.farmseller.com
www.centraloregonrealtors.com
ddwr@ortelco.net

The historical Silvies School

SILVIES VALLEY RANCH
Established 1883

We are proud to be a part of Grant County and its history. We take pride in caring for our history, our environment, livestock and our families.

Silvies, Oregon
www.silviesvalleyranch.com • 1-800-SILVIES

We make sure your loved ones will be taken care of.

Quality Life - Beautiful Location
Giving excellent care 24 hrs a day
BLUE MOUNTAIN CARE CENTER
112 E. 5th St., Prairie City
541-820-3341

THE CALM BEFORE THE STORM IS NOTHING COMPARED WITH THE CALM WE RESTORE AFTERWARDS

Formed in 1987, OTEC is one of Oregon's largest, non-profit, member-owned electric cooperatives serving over 31,000 meters in four counties with low cost, clean, renewable, carbon-free hydro-electric power.

We're Putting Our Energy to Work for You!

PROUDLY SERVING OUR MEMBERS FOR 28 YEARS

4005 23rd Street — Baker City, OR
400 Patterson Bridge Rd. — John Day, OR
567 W. Pierce — Burns, OR
2408 Cove Avenue — La Grande, OR

FOR MORE INFORMATION VISIT:
WWW.OTECC.COM