



STOP IN FOR
BREAKFAST...

GET LUNCH
TO GO!

SUBWAY

At the
stoplight in John Day
541-575-0782
Order Online: www.Subway.com

Two Great Locations Near Your Hunting Units



Bates State Park

28 primitive sites,
tent or RV;
day use area
with restrooms

BATES, OREGON

1 mile North of
Hwy 26 & Hwy 7 Junction

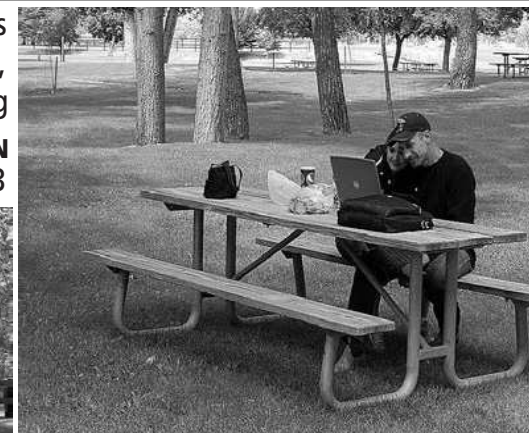
oregonstateparks.org

Clyde Holliday State Park

31 RV or tent sites
with electric, flushing toilets,
shower, water & hiking

MT. VERNON, OREGON

2 miles East of Mt. Vernon • 541-932-4453



DUKE WARNER REALTY



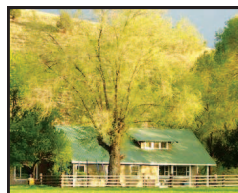
Dayville & John Day



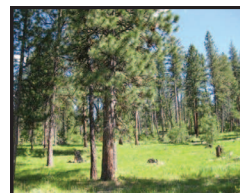
www.rmls.com • www.eastoregonrealestate.com • www.farmseller.com • centraloregonrealtors.com • oregonranchandhomes.com/dukewarner



**PRIVATE 320 AC
SETTING!** 90 Ac
pasture, log home,
arena, barn, shop,
rental bunkhouse.
\$775,000
RMLS #1617585



**SOUTH FORK
RANCH!**
River frontage, 205 ac,
50 irr, ranch home,
shop, corrals, fenced.
\$679,000
RMLS #16048241



155 ACRES! Borders
NF, timber, fenced
private, good access,
camp trailer.
\$250,000
RMLS #16278416



**560 ACRES OF
TIMBERED
SECLUSION**
Off grid, 3/2,
garage, shop, barn.
\$1,300,000.
RMLS #15128485



**242 ACRES UP
SHOP GULCH!**
Panoramic views,
cabin w/loft,
storage. **\$299,000**
OWC
RMLS #16108702



OK GARAGE!
Mini mart, fuel &
mechanic shop,
upgrades throughout,
liquor, tires.
\$225,000 OWC
RMLS #14639529



**STUNNING
PANORAMIC
VIEWS!**
15 ac, MF home,
corrals, outbuildings, 3
irri pastures, fenced.
\$215,000
RMLS #16136314



**1120 ACRES
HUNTING
PROPERTY!**
borders public ground,
cabin, springs.
\$868,000
RMLS #16586701



**5 PRIVATE
TIMBERED
ACRES!** Borders NF,
insulated shop w/
bathroom, seasonal
creek. **\$149,900**
RMLS #15045032



Lori Hickerson,
Principal Broker,
GRI
541-575-2617
ljh@ortelco.net



Sally Knowles,
Broker, GRI
541-932-4493
sknowles@ortelco.net



Babette Larson,
Broker,
GRI
541-987-2363
ddwr@ortelco.net