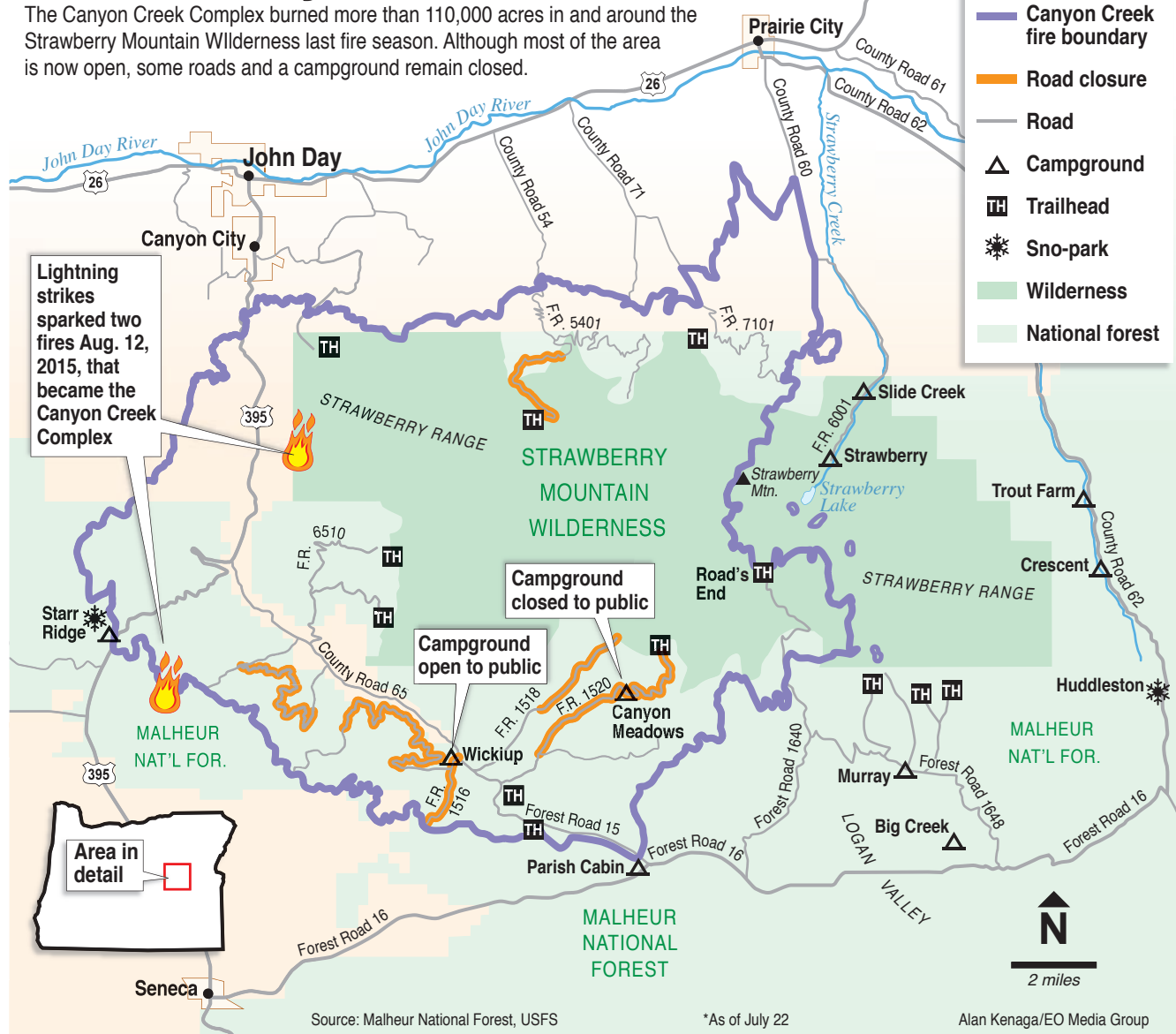


# Strawberry Mountain closures\*

The Canyon Creek Complex burned more than 110,000 acres in and around the Strawberry Mountain Wilderness last fire season. Although most of the area is now open, some roads and a campground remain closed.



The Eagle/Sean Hart

Big Creek runs right beside the campground named after it, which is just off Forest Road 16 in Logan Valley.



The Eagle/Sean Hart

This is one of several waterways that cross Forest Road 16 in Logan Valley.



The Eagle/Sean Hart

Canyon Creek at Wickiup Campground on Forest Road 15.

## LOGAN

Continued from Page C6

burn. The end of the road is a short drive south from Prairie City on County Road 60 about 9 miles to Slide Creek Campground, which has three tent/trailer sites with stream water, and 2 more miles on to Strawberry Campground, which has 10 sites and piped water.

The lake, however, cannot be reached by vehicle. You'll have to hike in about a mile uphill from the campground to reach the lake and about another mile to reach Strawberry Falls, but it's worth it.

The area offers fishing and even more hiking opportunities, as the hiking trail is connected to a trail system that traverses the wilderness area, though the trails to the west quickly encounter the fire boundary.

### Wickiup Campground

If you start the loop around the wilderness area heading south from John Day, you'll drive through the fire boundary on Highway 395 and County Road 65, which becomes Forest Road 15 near Wickiup Campground, the first you'll encounter on the west side of the loop.

The campground, which has four picnic sites and seven tent/trailer sites and stream water from Canyon Creek, is open, but Forest Road 1516 just beyond the campground remains closed.



The Eagle/Sean Hart

An information station at Big Creek Campground shows nearby mountain biking trails.

### Parish Cabin

Continuing southeast on Forest Road 15, you will soon leave the fire boundary and come upon Parish Cabin Campground near the intersection with Forest Road 16. The campground features one picnic site and 19 tent/trailer sites with piped water.

### Road's End Trailhead

About two miles east of Parish Cabin on Forest Road 16, you will come upon signs pointing north to Road's End Trailhead on Forest Road 1640, which travels back into the burned area to several trailheads at the boundary of the wilderness area. As the name suggests, however, you'll have to leave your vehicle there if you plan to hike into Strawberry Lake from the south side of the wilderness.

### Murray Campground

Continuing east on Forest Road 16, you will enter Logan Valley. Roughly 6 miles east of Parish Cabin, you will

encounter Forest Road 924, which travels north about 2 miles to Lake Creek Youth Camp, a private group compound (call 541-575-2153 for availability and prices), and about another mile to Murray Campground.

Lake Creek flows right beside the campground, which features five tent/trailer sites and piped water.

### Big Creek Campground

About 1.5 miles east of the turnoff for Lake Creek camp, you will encounter the turnoff for Big Creek Campground, which is less than a mile from Forest Road 16 on Forest Road 815.

Big Creek Campground has 15 tent/trailer sites and piped water. An information station at the campground entrance points out mountain biking trails, and Big Creek runs right beside the campground.

### Crescent Campground

If you follow Forest Road

16 east out of Logan Valley to its intersection with County Road 62 at Summit Prairie, you can travel the county road north to Prairie City.

About 6 miles north on County Road 62, you will encounter Crescent Campground, a minimally developed location with four tent/trailer sites and stream water.

### Trout Farm Campground

North on County Road 62, about 2 miles from Crescent Campground, you will come to Trout Farm Campground, which features six picnic sites and six tent/trailer sites and piped water.

Continue north on the county road, and you will reach Prairie City. From there, it's a short drive west on Highway 26 to John Day.

LICENSED OREGON PROFESSIONAL LAND SURVEYORS

**BENCHMARK**  
LAND SURVEYING  
217  
N. CANYON BLVD.

541-575-1251 • 800-699-0516 • BENCHMARKLS.COM

What's Kasasa?

It's like a **FREE ATM** on every corner.

Free Kasasa checking refunds your ATM fees, nationwide.\* So even if you use one of the big banks' ATMs, we'll pay you back. No more searching for a "free" ATM.

Ask for **free Kasasa** checking

**OLD WEST**  
FEDERAL CREDIT UNION  
www.oldwestfcu.org

\*To qualify do the following activities: 1) have at least 12 debit card purchased post and settle, 2) have a direct deposit, ACH credit or ACH debit, and 3) be enrolled in e-statements. Account transactions and activities may take one or more days to post and settle to the account and all must do so during the Monthly Qualification Cycle in order to qualify for the account's rewards. The following activities do not count toward earning account rewards: ATM-processing transactions, transfers between accounts, debit card purchases processed by merchants and received by Old West FCU as ATM transactions and purchases made with non-Old West FCU issued debit cards. \*Monthly Qualification Cycle\* means a period beginning on the last business day of the previous month through one (1) day prior to the last business day of the current month. When account qualifications are met you will receive reimbursements for nationwide ATM fees incurred during the Monthly Qualification Cycle in which you qualified. When account qualifications are not met, ATM fees are not reimbursed. ATM fee reimbursements will be credited to your Kasasa account on the last day of the statement cycle. Account approval, conditions, qualifications, limits, timeframes, enrollments, log-ons and other requirements may apply. No minimum deposit is required to open the account. Limit one account per primary account holder social security number. There are no recurring monthly service charges or fees to open or close this account. Contact an Old West FCU service representative for additional information, details, restrictions, processing limitations and enrollment instructions. Federally insured by NCUA

Kasasa is a trademark of BancVue, Ltd., registered in the U.S.A.

Federally Insured by **NCUA**

650 W. Main St. John Day, Oregon (541) 575-0264 | 162 W. Front St. Prairie City, Oregon (541) 820-4601 | 2036 Broadway Baker City, Oregon (541) 523-5535 | 301 S. Main St. Pendleton, Oregon (541) 278-6800 | 1739 N. First St. Hermiston, Oregon (541) 564-0264 | 709 Ponderosa Village Burns, Oregon (541) 573-3143.

ROCK BEER, DESCHUTES BEER, MILLER COORS BREWING, COORS LIGHT, SMIRNOFF, COORS, FRANZKA, MILLER STE CHAPELLE

HAVE AN EVENT TO HOST?

Call Bob Blake anytime at **541-575-1170**

**Echanis**  
Distributing Company  
Your local beer & wine wholesale for over 45 years