

# SQUINTS AND GLANCES

A look back on news from Grant County over the past 100 years this week, pulled from issues of the past.

The Blue Mountain Eagle

**100 years ago  
Sep. 16th, 1915  
Grant County Journal  
Malheur Forest**

The records of the Malheur National Forest show that during the seasons of 1914 and 1915 the following number of cattle, horses, and sheep grazed on that forest: Year: 1914 cattle and horses, 22,207, sheep, 124,493; 1915; cattle and horses, 24,312, sheep, 103,122.

These figures show an increase of 2,105 head of cattle and horses and a decrease of 21,371 head of sheep. The greater part of this increase

in cattle and horses went to local ranchers in the John Day, Bear, Silvies and Harney Vallies. The large decrease in sheep this year would indicate rather clearly that the cattle ranges are not being depleted by outside sheep.

The regulations under which grazing within the National Forests is administered provide that any owner of improved ranch property within or near a National Forest shall be entitled to graze stock on the ranges of such Forest, and no such owner has been or will be denied the use of the ranges of the Malheur National Forest.

**50 years ago  
Sep. 16th, 1965  
Blue Mountain Eagle  
Nydia Queen Schedules  
Grant County Nile Visit**

Mrs. Carl W. (Doris) Hopp, Queen of Nydia Temple No. 4, Daughters of the Nile, will make her official visitation to the Grant County Nile club Sept. 28. A dinner meeting at Mt. View Golf club will mark the occasion.

Accompanying the queen will be the Princess Royal, Mrs. Leib L. Riggs.

Mrs. Hopp will tell of her special project for the year which will benefit the Supreme Temple's convalescent endowment fund. This is a permanent trust fund from which the interest is used for prothesis for the crippled children out-patients of the Shriners hospitals. One dollar of dues of Nydia Temple members will be sent to assist in meeting the ever-increasing needs of orthopedic equipment for the children.

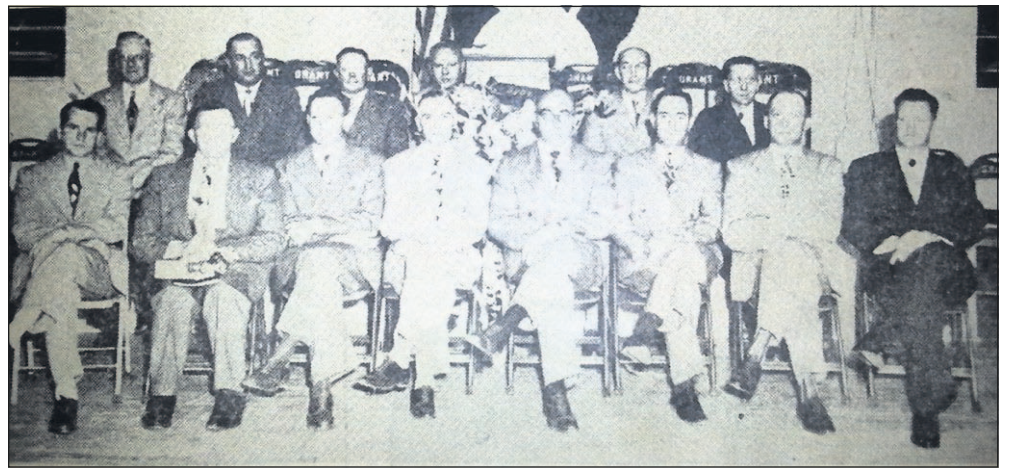
Nydia Temple was organized in Portland April 23, 1919 and has the largest membership, 4,276, in the Nile. Four Nydia past queens have become Supreme queens, Mrs. Winifred G. Lea, 1926; Mrs. Wm. R. Boone, 1934; Mrs. Thomas Luke, 1953; and Mrs. Hal E. Simpson, 1964.

Mrs. Hopp is the 47th to head Nydia Temple and has been a member for 19 years, holding many important assignments.

The Grant County club was organized in 1950. Its past presidents are Rosella Prophet, Lilian Mascall, Elda Way, Dorothy Sproul, Minnie Dale, Freida Organ, Dorothy Wright and Bessie Patterson. Edith Traux is the present president and serving with her are Lois Lee, vice president, and Elsa Boyer, secretary treasurer.

All sewing and money raised by the group goes to the Shrine Hospital for Crippled

**ELKS LODGE LEADERS IN THE SPOTLIGHT**



Eagle file photo

**Friday, September 29, 1950 - Officials of the newly installed John Day Elks lodge as they were pictured at the close of installation ceremonies. In the back row, from the left are: Dow Wilson, Joe Officer, Sam Keerins, trustees; E.H. Howell, inner guard; Theron Knox, chaplain; Howard Lohf, esteemed loyal knight; Bob Hill, treasurer; Finley McRae, tiler; Don Boyer, esteemed lecturing knight; Johnnie Farley, esteemed leading knight; Lloyd Ogilvie, exalted ruler; Carl Driskill, esquire; Earl Van Voorhis, trustee; and G.L. Herburger, secretary. Edgar Deardorff, trustee, was not present for the picture.**

**BRIDGE BUST**



Eagle file photo

**Thursday, September 16, 1965 - GOING DOWN? The driver of this car was undoubtedly surprised late Saturday night when the bridge broke underneath him. The car was discovered Sunday morning on the Guy Sproul property on Canyon Creek south of Canyon City. The car was owned by Larry McClough, Izee.**

Children at Portland. Committees in charge of

dinner arrangements for the visit of the queen are: Entertainment - Frances Meyers, Evelyn Ogilvie and Arlene Oliver; decorations and tables - Lily Ogilvie, Freida Organ, Zada VanVoorhis, Irene Scott, Esma Reynolds and Dorothy Sproul.

**25 years ago  
Sep. 13th, 1990  
Blue Mountain Eagle  
Accident, lightning spark  
fires**

**JOHN DAY-** A fire set off by juveniles playing with illegal fireworks burned about 35 acres of sage- and juniper-covered rangeland just north of the John Day city limits last Thursday.

Crews from the John Day Rural Fire Department and the Oregon State Department of Forestry, along with a number of private citizens, worked to contain the blaze. The Malheur National Forest also dis-

patched its helicopter to drop water on the fire.

The fire started on land protected by John Day Rural Fire District, but quickly spread outside the district onto other private lands protected by the state Department of Forestry. Crews were on the scene when the fire was estimated at three acres in size, but strong south winds blew the flames along the ground and crews raced to keep up.

The state also responded to a one-acre fire three miles north of Prairie City Friday. District Forester Frank Vetter said the small blaze was apparently started by lightning. The Forest Service assisted in containing the fire.

The Forest Service responded to 15 fires sparked by lightning storms that swept the area Thursday and Friday. Most of the fires occurred on Friday, although a few went undetected until Monday, according to Jennifer Bush, a dispatcher for the Malheur National Forest.

The largest of the fires was a one-acre blaze along the Middle Fork John Day River.

**10 years ago  
Sep. 14th, 2005  
Blue Mountain Eagle  
Relief from here to there. Residents open hearts, wallets to help survivors in the Gulf Coast.**

**JOHN DAY-** Hurricane Katrina hit the Gulf Coast at about 150 mph, and in its wake it left death and destruction.

Less than two weeks after Katrina left New Orleans under water, money flew out of Grant County pockets with hurricane-like velocity, and it's heading to Louisiana and Mississippi to provide help and hope for the survivors of what many are calling the worst natural disaster in the country's history. Katrina came ashore Aug. 29, busting levees and putting 80 percent of New Orleans under water.

A joint effort of Grant County emergency services, employees at the Old West Federal Credit Union and KJDY, the local radio station, pulled in \$29,828.80 in donations, much of that in a single day.

Not just money is heading from here to there.

The families of county law enforcement banded together to pack 13 boxes with clothing, uniforms and toiletries, including one box with children's items, and sent them Sept. 7 to the Madison County Sheriff's Department in Mississippi.

"Those boxes were stuffed, fully packed," said Dawn Gray, who help(ed) coordinate the effort. She is the wife of John Day police officer Richard Gray.

Law enforcement from throughout the county, including the local BLM officer, donated to the cause.

"All the families got involved, and we are just so grateful," said Dawn Gray, the secretary at the Baptist Church in Prairie City.

And people, too. At least six nurses from the county

*Serving Grant County Since 1984*

- Nutrena & CHS Payback Feeds
- Pro Pac Premium Dog & Cat Food
- Livestock Supplies
- Agriculture & Industrial Parts & Equipment
- Behlen Manufacturing
- Powder River Panels & Livestock Equipment
- HW Brand Dealer
- Smartlic Livestock Supplement
- Backwoods Water Troughs

**Keystone SteelWire**

**GIBCO**  
Ag & Industrial

312 N. Canyon City Blvd., Canyon City  
541-575-2050  
Open Mon. - Sat. 8 a.m. - 6 p.m.

*In memory of Curly*

**"We Keep America Running And We Have For A Long Time"**

Your source for Automobile, Truck and Tractor Parts & Accessories

Full line of Martin Senour Paints

ASE - Certified Counterman

Oxygen & Acetylene

Steel Sales

Closed Sundays

**NAPA**

Proudly Serving Grant County Since 1966

**John Day Auto Parts AUTO & TRUCK PARTS**

721 W. Main St., John Day • 541-573-1850

HEALTHY FOREST - JOBS  
RENEWABLE RESOURCE SOLUTIONS  
YESTERDAY. TODAY. AND TOMORROW

**Malheur Lumber Company**

*Celebrating over 30 years*

Malheur Lumber Company was established in 1983 as a division of Ochoco Lumber Company which is based in Prineville, Ore.

As we celebrate our 30th year of operation in Grant County, we would like to thank those who have helped us meet the challenges of the years past, as we look forward to meeting the challenges of the future.

By providing family wages and excellent benefits to our outstanding employees and their families, we provide a strong foundation to the Grant County economy.

**Edward Hines Lumber Co.**

1957 Advertisement by Edward Hines Lumber Co.

WANT YOUR GRANDCHILDREN TO HATE YOU?

Remember... only you can PREVENT FOREST FIRES!

GRANT COUNTY AND OREGON FORESTS Are Your Great Heritage... Do Your Part In Protecting Them And Preserving The Trees.

*We make sure your loved ones will be taken care of.*

**BEST NURSING HOMES**  
US News 2015

*Quality Life - Beautiful Location*  
*Giving excellent care 24 hrs a day*

**BLUE MOUNTAIN CARE CENTER**  
112 E. 5th St., Prairie City  
541-820-3341

**Rebuilding history one power pole at a time.**

**OTEC has replaced 160 poles and 60,000 feet of wire in the Canyon Creek Complex Fire.**

**We are your local electric cooperative.**

**Where you need us. When you need us.**

**OREGON TRAIL ELECTRIC CO-OP**

400 Patterson Bridge Rd. • John Day, OR  
(541) 575-0161 • www.OTECC.com