



# New chief picked for hospital

Randall Mee will start work June 15 in JD

By **Scotta Callister**  
Blue Mountain Eagle

JOHN DAY – Blue Mountain Hospital is getting a new CEO who brings both regional and international experience to the job. Randall Mee of Hillsboro will be-

gin his duties June 15, taking the helm from interim CEO Margie Molitor.

Jack Southworth, chairman of the Blue Mountain Hospital District board, announced the hire Tuesday. The board picked Mee from among three candidates interviewed for the job.

Southworth noted Mee's extensive background in rural and critical access hospitals, as well as his familiarity with Northeast Oregon and its hospitals.

Mee was president and CEO of St. Anthony Hospital in Pendleton from 2008-2011, and previously was CEO of Cottage Grove Community Hospital in Cottage Grove. Earlier in his career, he worked in rehabilitation and geriatric services at a hospital in Great Falls, Mont.

More recently, he has been a member of CURE Management Services' International Team, as admin-

istrator of a hospital in the United Arab Emirates.

At Blue Mountain Hospital, Mee will be employed by HealthTech Management Services, the management company for the hospital district, with a salary of \$185,000.

He succeeds Bob Houser, who retired in December after 15 years with the district.

Southworth said Mee's hire was a unanimous decision of the board and

also had the support of staff and providers at the hospital.

He rose to the top of the field for his leadership style, as a team player who puts a priority on ensuring the quality of care and operations.

The board lauded the contributions of Molitor in the interim, with Southworth saying she did "a spectacular job guiding the hospital forward over the past five months."



## ON THE MOVE TO SUPPORT HOSPICE

Contributed photos

Walkers in the May 2 Strut, Stride, Straddle and Stroll fundraiser round the bend in the highway headed into John Day.

## Crowd turns out for sunny May 2 fundraiser

By **Cheryl Hoefler**  
Blue Mountain Eagle

JOHN DAY – Last Saturday was a beautiful day to be outdoors – Just ask the 111 participants in Blue Mountain Home Health and Hospice's annual Strut, Stride, Straddle and Stroll.

The robust turnout more than doubled last year's number.

The event offered a variety of activities to suit people of all ages and abilities: 13-mile bike ride, from Prairie City; 10K run from Holliday Ranch; a 4-mile run/walk from just past Dog Creek Road; or a 1.5-mile stroll at Seventh Street Complex.

All events finished at Blue

See STRUT, Page A10



A quartet of ladies, with a youngster in tow, stride together along the highway.

## Student designs on countdown for spaceflight

Two county students win art competition

By **Angel Carpenter**  
Blue Mountain Eagle

JOHN DAY – Space patches designed by two Grant County students have been cleared for lift off.

Grant Union Junior-Senior High School seventh-grader Jasmine Martin and Humbolt Elementary sixth-grader Ben Henry won an "out of this world" art competition.

The art contest was held in conjunction with a countywide scientific Student Spaceflight Experiments Program (SSEP) competition, with the winning experiment and space patches set for flight into space on Mission 7 in June.

Grant Union science teacher Sonna Smith spearheaded the science competition, and Grant Union art teacher JJ Collier coordinated the art contest with help from sixth-grade teacher Lorie Croghan.

Other students throughout the U.S. also participated in SSEP contests in their communities.

Participating in the art contest were 76 Humbolt students in grades 3, 5 and 6 and 120 students in grades 7-12 at Grant Union.

Students from the participating schools were asked to create a design which would represent an embroidered space patch which astronauts wear on their voyages.

The entries were judged on artistic merit and neatness, with the required information included and written legibly.

Eight jurors from five Grant County towns, including artists and art teachers, selected the winners.



Space patch design by **Jasmine Martin, grade 7**



Space patch design by **Ben Henry, grade 6**

During the judging process, the artwork was set out with the designers' names hidden from view.

Winners were chosen March 30.

Collier said seven of the eight judges chose Martin's patch, and Henry's patch was neck and neck with another student's patch.

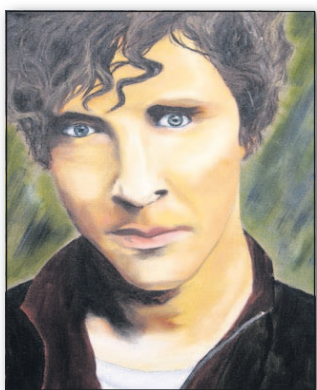
"The entries were fantastic, making it hard for the judges," she added.

Students, parents and others can watch for the countdown to launch of Mission 7 online at <http://ssep.ncesse.org/communities/mission-patches/>.

The science experiments and mission patches will be returned to the school after the flight as a symbol of the adventure into space.

SSEP is a program of the National Center for Earth and Space Science Education and the Arthur C. Clarke Institute for Space Education.

### STUDENT ART



**Amaya Zweygardt**  
Grade 12  
Prairie City School  
Teacher: Raymond Field

## All aboard ... in Monument

People Mover expands into Monument area

Blue Mountain Eagle

JOHN DAY – The People Mover public transportation service, based in John Day, is expanding its coverage area to include routes to and from Monument.

The Grant County

Transportation District announced the new service will begin Tuesday, May 12.

Here's the schedule:

- Tuesdays: Monument to Walla Walla, Wash., departing at 6:30 a.m. Reservations are required.

- Wednesdays and Fridays: Monument to Bend., departing at 6:20 a.m. Reservations are required.

- Thursdays: Monument to John Day, departing

Monument at 9:30 a.m.; from Long Creek at 10:10 a.m., and Mt. Vernon at 10:46 a.m. Reservations are requested.

The pick-up and drop-off location in Monument for all routes is the Monument Senior Center parking lot.

Pick-up and drop-off in Long Creek on Thursdays is at the general store, and in Mt. Vernon, the Blue Mountain Mini Mart.

Once in Walla Walla or Bend, people can make connections via other public transit services, to airports, Amtrak and other locations.

For connection details, fares, reservations and complete schedules, contact The People Mover at 541-575-2370, or email [peoplemover@outlook.com](mailto:peoplemover@outlook.com).

Visit The People Mover at [www.grantcounty.peoplemover.com](http://www.grantcounty.peoplemover.com) or on Facebook.



Recognize and celebrate our local nurses this week.

"When you are a nurse, know that every day you will touch a life - or a life will touch yours"  
- Unknown

See page A5 for a list of our local nursing staff.

