

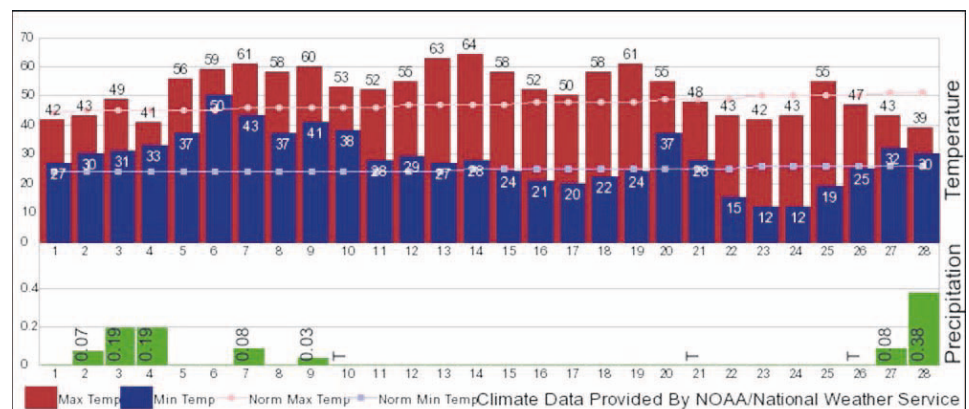
GRANT COUNTY MEETINGS

**WEDNESDAY, MARCH 11**  
**12 p.m. – Seniors Meal**, Strawberry Grange Hall, Prairie City.  
**12 p.m. – Women’s Support**, Heart of Grant County, for domestic violence survivors. 541-575-4335.  
**1:30 p.m. – Strawberry Grange**, 204 N. McHaley, Prairie City. 541-820-3530.  
**5:15 p.m. – Grant Union Grad Night Committee**, GUHS library.  
**6 p.m. – Long Creek Fire Department**, City Hall.  
**6 p.m. – Prairie City, council/planning commission**, City Hall.  
**6:30-8:30 p.m. – Family History Center** open, Church of Jesus Christ of Latter-day Saints. 541-656-8069.  
**7 p.m. – Monument City Council**, City Hall.  
**7 p.m. – Dayville City Council**, City Hall.  
**7 p.m. – Girl Scout Leaders**, 60545 W. Highway 26, John Day. 541-575-1106.  
**7:30 p.m. – Let Go Group**, AA, St. Elizabeth Parish Hall. 541-575-0114.  
**THURSDAY, MARCH 12**  
**9 a.m.-5 p.m. – Family History Center** open, Church of Jesus Christ of Latter-day Saints, John Day. 541-656-8069.  
**11:30 a.m.-1 p.m. – Grant County Family Violence Council**, AFS, 725 W. Main St., John Day. 541-575-4335.  
**Noon – Seniors Meal**, bingo, John Day Senior Center, 142 N.E. Dayton St. 541-575-1825.

**5:30 p.m. – Library Advisory Board**, library, 507 S. Canyon Blvd., John Day.  
**5:30 p.m. – Juniper Arts Council**, United Methodist Church, John Day. 541-932-4892.  
**5:30-7:15 p.m. – Youth Connection**, Living Word Christian Center, Mt. Vernon. 541-932-4910.  
**6 p.m. – “The Girlfriends” Women’s 12-step Recovery**, John Day Church of the Nazarene. 541-620-0065.  
**6 p.m. – Long Creek City Council**, Community Hall. 541-421-3601.  
**6:30 p.m. – Grant County Stockgrowers**, Keerins Hall.  
**7 p.m. – Monument School Board**, high school.  
**7 p.m. – John Birch Society**, Mt. Vernon. 541-932-4547.  
**FRIDAY, MARCH 13**  
**3-6 p.m. – United Methodist Church**, food boxes, 126 N.W. Canton Street, John Day.  
**6 p.m. – AA**, open to nonmembers too, Long Creek Community Center. 541-421-3888.  
**6:30 p.m. – Mt. Vernon Grange**, potluck. 541-575-1007.  
**7 p.m. – Whiskey Gulch Gang**, Sels Brewery, Canyon City. 541-575-0329.  
**SATURDAY, MARCH 14**  
**10 a.m. – Sewing Circle**, Potluck, Quilts and Beyond, Prairie City. 541-820-4777.  
**10 a.m.-4 p.m. – Loose Threads donation quilting group**, Shiny Thimble, Mt. Vernon. 541-792-0670.

**SUNDAY, MARCH 15**  
**Fun Jam**, musicians and listeners welcome. Call for time, location, 541-575-1927.  
**MONDAY, MARCH 16**  
**10 a.m. – County Senior Site Council**, John Day Senior Center, 142 N.E. Dayton St., John Day.  
**Noon – Seniors Meal**, John Day Senior Center, 142 N.E. Dayton St. 541-575-1825.  
**6 p.m. – Mt. Vernon Fire Department**, 541-932-4688.  
**6 p.m. – Grant County Farm Bureau**, Outpost Restaurant.  
**6 p.m. – Airport Commission**, terminal building. 541-575-1151.  
**7 p.m. – Dayville Fire Department**, fire hall.  
**7:30 p.m. – Outlaw Group**, AA, Presbyterian Church, Mt. Vernon. 541-932-4844.  
**TUESDAY, MARCH 17**  
**10-11 a.m. – Story Hour**, Grant County Library. 541-575-1992.  
**12 p.m. – Seniors Meal**, Monument Senior Center.  
**5-7 p.m. – Food Bank, Community Meal**, Teen Center, Prairie City. 541-820-3696.  
**5:30 p.m. – Canyon City Council**, City Hall.  
**6 p.m. – Watershed Council**, Long Creek. 541-421-3018.  
**6 p.m. – Humbolt School PTA**, school cafeteria. 541-932-4998.  
**6:30 p.m. – Grant County Bird Club**, potluck. 541-575-1598.  
**6:30 p.m. – Long Creek School Board**, school library.  
**6:30 p.m. – New Beginnings Recovery Group**, Living Word Christian Center, Mt. Vernon. 541-932-4910.  
**7 p.m. – Prairie City Rural Fire Board**, City Hall.  
**7 p.m. – Venturing Club**, Boy Scouts, Church of the Nazarene, John Day. 541-575-2765.  
**7 p.m. – Granite City Council**, City Hall.  
**7:15 p.m. – Scout Troop 898**, John Day Elks Lodge, John Day. 541-575-2531.  
**WEDNESDAY, MARCH 18**  
**9 a.m. – Grant County Court**, Canyon City.  
**9 a.m. – Shepherd’s Closet**, Prairie City Assembly of God. 541-820-3682.  
**11:30 a.m.-1 p.m. – TOPS**, Methodist Church library, 126 N.W. Canton St., John Day. 541-575-3812, 541-932-4592.

February was a warm one in JD



There were 19 days with a low temperature below 32 degrees.  
 Precipitation totaled 1.02 inches during February, which was 0.27 inches above normal. Measurable precipitation – at least .01 inch – was received on seven days with the heaviest, 0.38 inches reported on Feb. 28.  
 Precipitation this year has reached 1.37 inches, which is 0.36 inches below normal. Since October, the water-year precipitation at John Day measured 6.11 inches, 0.80 inches above normal.  
 Snowfall totaled 2 inches with at least 1 inch of snow reported on one day. Feb. 28 had the heaviest snowfall and the greatest depth of snow on the ground, at 2 inches.  
 The highest wind gust was 48 mph, recorded on Feb. 6.  
 The outlook for March from NOAA’s Climate Prediction Center calls for above-normal temperatures and near- to below-normal precipitation.  
 Normal highs for John Day rise from 51 degrees at the start of March to 57 degrees at the end of March. Normal lows rise from 27 degrees to 31 degrees. The 30-year normal precipitation is 1.27 inches.

There were 19 days with a low temperature below 32 degrees.  
 Precipitation totaled 1.02 inches during February, which was 0.27 inches above normal. Measurable precipitation – at least .01 inch – was received on seven days with the heaviest, 0.38 inches reported on Feb. 28.  
 Precipitation this year has reached 1.37 inches, which is 0.36 inches below normal. Since October, the water-year precipitation at John Day measured 6.11 inches, 0.80 inches above normal.  
 Snowfall totaled 2 inches with at least 1 inch of snow reported on one day. Feb. 28 had the heaviest snowfall and the greatest depth of snow on the ground, at 2 inches.  
 The highest wind gust was 48 mph, recorded on Feb. 6.  
 The outlook for March from NOAA’s Climate Prediction Center calls for above-normal temperatures and near- to below-normal precipitation.  
 Normal highs for John Day rise from 51 degrees at the start of March to 57 degrees at the end of March. Normal lows rise from 27 degrees to 31 degrees. The 30-year normal precipitation is 1.27 inches.

T-ball coming to Parks and Rec

Parents can sign up tykes in April  
 Recreation board of directors voted March 4 to offer a T-ball program this spring.  
 T-ball previously was offered through Grant County Little League.  
 Registration will begin Saturday, April 11, and will be open for a few weeks.  
 Practice will begin Monday, May 11.  
 Details such as fees and ages for participants will be worked out the next Parks and Rec board meeting, set for Thursday, March 19.

Parents can sign up tykes in April  
 Recreation board of directors voted March 4 to offer a T-ball program this spring.  
 T-ball previously was offered through Grant County Little League.  
 Registration will begin Saturday, April 11, and will be open for a few weeks.  
 Practice will begin Monday, May 11.  
 Details such as fees and ages for participants will be worked out the next Parks and Rec board meeting, set for Thursday, March 19.

DEER

Continued from Page A9  
 During winter the does are generally early in pregnancy and will not have their fawns until June.  
 “Captures up to the third trimester should be OK for the doe and unborn fawn,” said wildlife veterinarian Dr. Colin Gillin. “We have no information from published studies that show capture events on pregnant animals reduce fawning rates or cause abortions. We certainly haven’t seen it on our captures of deer over the year.”  
 ODFW officials hope the new way of tracking deer will improve how they determine the animals’ boundary distributions.  
 “Historically, we have managed mule deer herds based on data from a 1960s population model and conventional wisdom on how they are distributed among Wildlife Management Units,” said Chip Dale, ODFW Klamath and Malheur Watersheds Manager.  
 He said a similar study in Central Oregon revealed that movements and distribution of mule deer have changed.  
 “Some unit boundaries reflect animal distributions well, and some don’t,” Dale added.  
 Ryan Torland, district wild-

life biologist for Grant County said, “Our unit boundaries are socio-political and may not line up with what deer herds are actually doing. For example, many deer that spend winter in Murderers Creek are in the Silvies Unit during hunting season.”  
 Information gathered could change how populations are monitored through updated population modeling techniques. Eventually, this information could lead to hunting season changes so tags better align with actual mule deer movements.  
 “For example, when herds are spending time in two different units, tag changes would occur in both,” Torland said.

life biologist for Grant County said, “Our unit boundaries are socio-political and may not line up with what deer herds are actually doing. For example, many deer that spend winter in Murderers Creek are in the Silvies Unit during hunting season.”  
 Information gathered could change how populations are monitored through updated population modeling techniques. Eventually, this information could lead to hunting season changes so tags better align with actual mule deer movements.  
 “For example, when herds are spending time in two different units, tag changes would occur in both,” Torland said.

*the corner's*  
**HOT SHOT**  
 OF THE WEEK

**SAGE FLOWER**  
 School: Dayville  
 Grade: Senior

**Dayville Tigers**

Parents: Dave and Joanne Flower  
 Sport: Basketball  
 What I like best about my sport: “I like hanging out with my teammates and our constant struggle to get better.”  
 Coach’s Comment: “Sage never gives up. He is a great team leader and a great example of character. Sage is one of the hardest working young men that I’ve ever coached.”  
 – Coach Jeff Schafer

Proud sponsor of Grant County athletes  
 100 E. Main • Stoplight in John Day • 541-792-0425

BETTER THAN GOLD™  
**69 Cent Dollar**  
 STARTS MARCH 17  
 LISTEN TO **KJDY**  
 1400 AM/94.5 FM  
 FOR DETAILS

EST. 1883  
**SILVIES VALLEY RANCH**  
 EDUCATIONAL SCHOLARSHIPS  
 Open to Grant and Harney County Students.

Postmark deadline is **April 1, 2015**

Applications are available from your school’s guidance counselor or online at [www.silviesvalleyranch.com](http://www.silviesvalleyranch.com)

**CRAB FEED**  
 March 14, 2015 • 6PM  
 Fresh Crab in the Shell,  
 Prime Rib,  
 all the sides and fixings

**\$30/PLATE** OPEN TO THE PUBLIC  
**\$50/COUPLE** 6pm • JD Golf Course  
 Limited to 75 plates.

CALL 541-575-0170 FOR TICKETS.

**MEET**  
 Continued from Page A9  
 went 2-2 for fourth.  
 “Braden had to wrestle back through the consolation side of a huge 32-man bracket, and knocked off six wrestlers to finish third,” Lusco said.  
 Antonio Smith and Ethan Moore also each won a match, and Russell Hodge won two matches, losing on a close decision.  
 “We are very proud of these young men, and they show that the future looks good for Grant Union wrestling,” Lusco said.  
 The three who placed will advance to the Middle School State Meet in Woodburn on Saturday.

**The Juniper Arts Council is Seeking Grant Proposals for the John and Linda Shelk Foundation Community Grant Program**

The Juniper Arts Council has \$4,500 from the John and Linda Shelk Foundation to distribute in Grant County to organizations in need of funding for community projects.

Priority will be given to organizations whose projects demonstrate support by the community, meet the greatest needs and serve the largest number of community members, and include some collaboration and/or community partnerships.

Applications are available from Karin Barntish, 131 W. Main St., John Day or call Kris Beal at 541-932-4792 for more information or an application. Grant applicants will be accepted until April 3, 2015 at 5:00pm

**SILVERADO TRUCK MONTH**

**SILVERADO MOST AWARDED PICKUP OF 2014**

2015 SILVERADO 1500 CREW CAB LT ALL STAR 4WD  
 ON SELECT VEHICLES IN STOCK THE LONGEST  
**\$3,750 TOTAL CASH ALLOWANCE**  
**\$3,250 BELOW MSRP**  
 + 750 OPTION PACKAGE DISCOUNT

**\$7,750 TOTAL VALUE**

**COME TEST DRIVE ONE TODAY!**

**WRIGHT CHEVROLET** NEW & USED INVENTORY  
 Main Street • John Day  
 550 Main Street • Fossil

**SALES & SERVICES**  
**800-336-0057**

[www.wrightchevroletinc.com](http://www.wrightchevroletinc.com)