

Real Estate

AND

Insurance

Fire---Automobile---Life

FARM & BUILDING LOANS

Investments

Inland Empire Realty Co.

Albert A. Traugott, Prop.

Burns, Oregon.

Phone 30W

PLAYS OF THE WEEK

"HELLO, GEORGE!" SAYS TOM; "HELLO, TOM!" SAYS GEORGE

That's How Star of "Our Leading Citizen" and Author, Address Each Other

"Hello, Tom," and "Hello, George!" That's the way Thomas Meighan, Paramount star, and George Ade, America's leading humorous author, address each other.

For Tom and George are warm personal friends of long standing. Tom met George in Chicago and suggested that the author write a screen play. "Write one for me to star in," he added.

"That's a capital idea," responded Ade. "You've played a crook in several pictures. Now, in this story, we'll have you as something entirely different. We'll make you a small town lawyer—a lazy fellow who likes to fish better than practice law, and then we'll put you in politics and show how much dynamite you really have when you get into action. We'll prove that there are no lazy men—the so-called lazy man is simply one who has not struck the right job."

This is the story of "Our Leading Citizen," the Thomas Meighan starring picture which will be displayed at the Liberty Theatre tomorrow came into existence. It was dramatized by the author and Waldemar Young. A remarkable cast which includes Lois Wilson, Theodore Roberts, Wm. P. Carleton, James Neill, Laurence Wheat, Lucan Littlefield, Sylvia Ashton, Thomas Kennedy and Ethel Wales was chosen. Alfred Green directed.

Brown rot infection at blossoming time starts from the spore cup stage on the ground. Plowing early with repeated harrowing throughout the blooming period is the best way of fighting the early infection. Experiment station circular 53 on brown rot has just been released and will be sent free upon request to O. A. C.

We will do your job work.

SUFFERED FOR MONTHS SAYS PORTLAND LADY

Mrs. Newbury Was Nervous And On Verge Of Breakdown When She Started Tanlac Treatment—Feels Fine Today.

"Tanalac is without a doubt the finest tonic and builder I have ever known," says Mrs. C. S. Newbury, a highly esteemed resident of 589 Carlton Ave., Portland, Ore.

"For six months, I was in a weak, run-down condition. My nerves were so upset the least noise would almost set me wild and I felt utterly

SUPERSTITION AN AID TO DETECTION OF CRIMINALS

Theory Is Admirably Demonstrated By Betty Compson in "The Law and the Woman"

Because a woman, guilty of a capital crime, was superstitious—to the extent that breaking her mirror foreshadowed doom for her,—she was finally forced to confess at the eleventh hour and save the life of a man convicted of murder, though innocent.

Such is the central plot of "The Law and the Woman," a new Paramount picture, starring Betty Compson, to be seen at the Liberty theatre on tonight at 7:45.

It is by means of this idea—playing upon the superstition of the guilty woman—that Miss Compson, in the role of the faithful wife of the accused man, succeeds in obtaining a confession from a vampire, whom she confronts with the gruesome reminders of her crime. The picture shows the danger of circumstantial evidence in homicidal cases.

No stronger play has been produced than this. William T. Carlton plays opposite the star and heads an unusually strong supporting cast.

LEG WEAKNESS OF CHICKS DUE TO BAD MANAGEMENT

Crowd Housing and Lack of Green Feed Usually Associated With Most Severe Outbreaks

(From Department of Industrial Journalism Oregon Agricultural College.)

Leg weakness in chicks is a rather peculiar disease found most often in incubator hatched chicks at the age of 10 to 40 days. It frequently attacks chicks which have been apparently healthy and growing. When this disease appears in a brooder there are usually several cases at about the same time. Occasionally a very high percentage of the young chicks develop it within a few days.

The majority of outbreaks of leg weakness coming to the attention of

the veterinary department of the college seem to be associated with the method of management.

"Every severe outbreak we have observed has been in chicks that were closely housed and that were being fed a ration containing only a small amount of green feed," says Dr. B. T. Simms, professor of veterinary medicine.

"It is a significant fact that very few cases are ever seen in chicks hatched under hens and allowed to run with the old birds. In some outbreaks we have observed that this trouble appeared in only a part of a hatch.

"Chicks which were out in the sunlight and which had a sufficient amount of green feed escaped the trouble, while it developed in the chicks kept in and fed very little green stuff.

"Treatment after symptoms are well developed is not very satisfactory. A change in the method of management will usually prevent development of more cases. Such a change consists in allowing the young chicks to run in the direct sunlight and to have a plentiful supply of tender green grass or clover."

BIG ROOT CROPS POSSIBLE

Large yields of root crops for fall

and winter feeding may be obtained by farmers having rich, moist soils. Particular good varieties recommended by the Oregon station are giant half-sugar, giant intermediate, heavy cropper, mammoth long red and Danish shudstrup. Mangel planting is best done in late April or early May. Seeding is usually at the rate of eight to 12 pounds an acre. In sections of the Willamette valley and coast districts where root maggots are troublesome, mangels will replace rutabagas and turnips. Mangels are best grown on heavily manured land. In the coast section they respond to heavy application of superphosphate.

HITTEMISS MAKE

Kauf—"What do you think of Jones' car?"

Stuff—"Well—much more printable language than he does."

Feature at the Liberty Sunday April 27

Adolph Zukor presents Thomas Meighan

IN A
GEORGE ADE
STORY



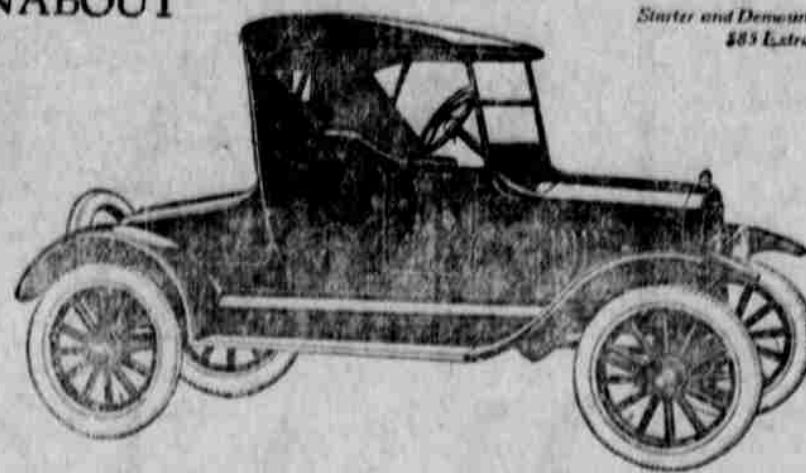
"Our Leading Citizen"



Ford
RUNABOUT

\$265

Starter and Demountable Rims
\$85 Extra



The Lowest Priced Two-Passenger Car

The Ford Runabout is the most economical car for personal transportation known.

Priced lower than any other motor car, its maintenance and running expenses are in keeping with its present low cost.

To salesmen and others who average a high daily mileage in business, the Runabout has a special appeal both for its operating economy and its convenience in making city and suburban calls.

Ford Motor Company
Detroit, Michigan

See the Nearest Authorized Ford Dealer

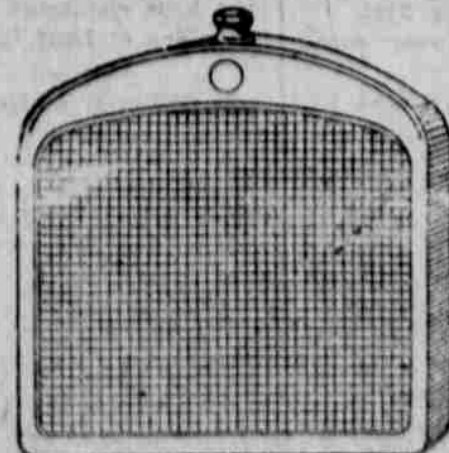
Ford
CARS · TRUCKS · TRACTORS

Liberty Theatre, SAT. April 26



A Paramount Picture

WE REPAIR



Radiators

Rightly Promptly Reasonably
Burns Hardware Company