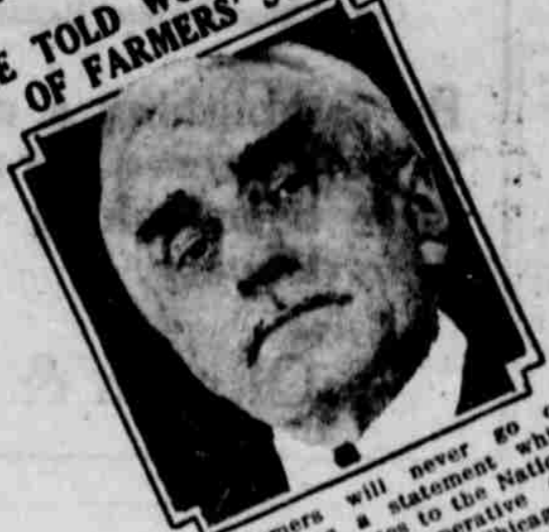


SEES FARM UNITY IN "CO-OP" TEACHING



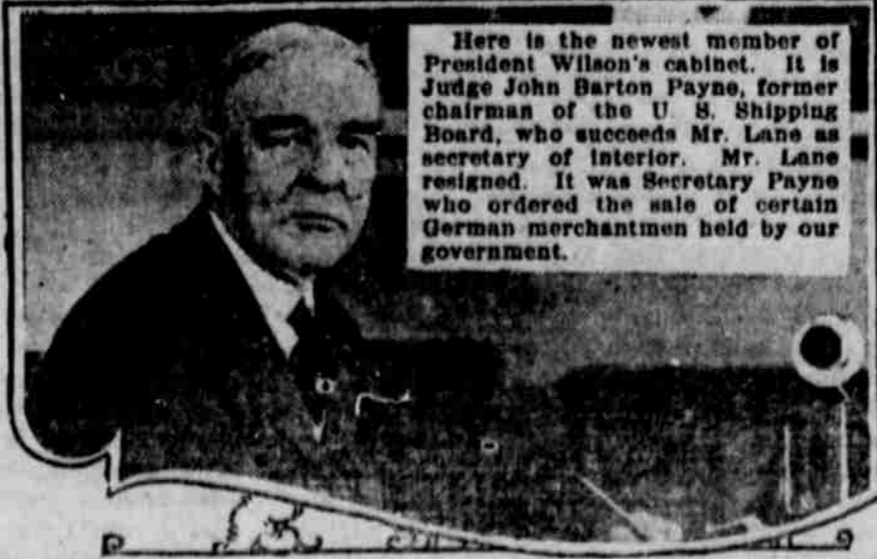
James K. Warbasse, Agres. Pa., President of the Cooperative League of America, is an advocate of an educational school, where all farm organization workers might be trained to carry on cooperative activities and aimed to result in a national unity of all farm forces.

HE TOLD WORKERS OF FARMERS' STAND



"Farmers will never go on strike" was a statement which brought delegates to the National Farmer-Labor Cooperative Congress to their feet in Chicago. It was George Hampton, director of the Farmers' National Council, of talking, and his talk had much to do with the steps taken toward uniform action by all cooperative agencies in the U. S.

OUR NEW SECRETARY OF THE INTERIOR



Here is the newest member of President Wilson's cabinet. It is Judge John Barton Payne, former chairman of the U. S. Shipping Board, who succeeds Mr. Lane as secretary of interior. Mr. Lane resigned. It was Secretary Payne who ordered the sale of certain German merchantmen held by our government.

HENS WITH TEETH AND BIG EGGS



A Cincinnati hen with teeth record-breaking, egg-laying 12-pound, any rate for favors this week. At break into the picture for its own sake. The picture in their own is of the giant 12-pound bird, owned by Mrs. C. M. Henke, 919 S. Claremont-av., Chicago, and one of its giant eggs, which measures 3-4 inches in circumference and weighs 6 ounces. Below is David Rindberg of Cincinnati and the hen, normal except that it has almost a human face, a very short bill—and teeth. Tufts of feathers resemble ears.

NAVY BLUES RULE IN WOMEN'S SUIT WORLD



Navy blue has always been considered a staple color in suits. This year it is the leading color predominating in both the ston and bolero. Navy tricotine and jersey rooks and twine colors are the materials used in the two models shown above. Note the open seams, double patch pockets and full skirted jackets. The selection of hats has been followed out very carefully. On the left a small flower bonnet gleams in all spring brightness. On the right a soft brim roll sailor; dark blue with a light straw facing.

Politicians Must Take Stand Before Farmers



The American farmer is into politics at last. Not along party lines, but in the open, where any party can have his support, if the men standing for that party prove they will give legislation toward progress of paramount agriculture questions. Here is the committee appointed by the recent National Farm Board Congress at Washington, to interview, investigate and report to the farmers of the nation through their various organizations, the attitude and support that can be expected from each candidate and party. This is to include candidates from president down to the humblest county position. Those on the committee are, front row, left to right: J. B. Houston, secretary Wisconsin Society of Equity; C. S. Barrett of Georgia, president National Farmers Union, chairman; R. D. Cooper, New York Dairyman's League; and Charles W. Holman. Back row, left to right: Clifford Pinchot, Pennsylvania Rural Progress Association; T. C. Atkeson, W. Va., National Grange; Maurice McAuliffe, president Farmers' Union, Kansas; and Charles A. Lyman.

WEST JOINS IN FARMER-LABOR MOVEMENT



The far-west is in with both in the national action of the American movement which got under way in the recent congress in Chicago, and looking to action the political will to get legislation through by agriculture and labor. Oscar McGowan, president of the National Farmers' Cooperative Union, west O. F. A. president of the League.

DEMOCRATS NAME WOMAN DELEGATE



When the Democrats go into the presidential convention at San Francisco in June, no doubt women delegates will be seated. However, the first to name a woman to the place, the honor going to Mrs. A. B. Pike of Lakewood, O., a suburb of Cleveland.

T. R.-REPUBLICAN IS SECRETARY OF STATE



Bainbridge Colby, New York lawyer, former Republican and supporter of Roosevelt in organization of the Bull Moose party, is the new secretary of state in President Wilson's cabinet to succeed Robert Lansing. His appointment faced a fight in Congress and was a big surprise to both Democrats and Republicans.

FARMER-LABOR BODY HAS ITS "WOODROW"



The Farmer-Labor movement has its "Woodrow." At least that was the comment on all sides at Chicago recently, whenever Duncan McDonald of Springfield hove into sight at the Farmer-Labor congress. Mr. McDonald is former president of the Illinois State Federation of Labor, but now secretary-treasurer of the National Cooperative League. He is an ardent worker for direct trading.

WOMAN DELEGATE TO C. O. P. CONVENTION



Miss Helen Vartick Rose is the only woman delegate to the Republican national convention, which will be held in Chicago in June. She is from New York.