

CLAIMS ALLOWED BY COUNTY COURT FEBRUARY 6, 1919

The Times-Herald.....	4.00	Printing for Sheriff's office.
The Times-Herald.....	12.17	Printing for Treasurer's office.
The Times-Herald.....	11.30	Printing for Assessor's office.
The Times-Herald.....	41.25	Printing for Clerk's office.
Mrs. Harry Z. Smith.....	72.00	Assisting in Sheriff's office.
Underwood Typewriter Co.....	9.00	Ribbons for Clerk's office.
C. E. Solomon.....	4.00	Car hire for Highway work.
Chicago Flag Co.....	20.24	Flag for Court House.
Haines Hospital.....	15.00	Use of surgery for county patient.
Chas. M. Faulkner.....	15.00	Ownership plats for Highway work.
Bushong & Co.....	6.25	Supplies for Clerk's office.
T. G. Howser.....	4.62	Refund of Taxes.
J. N. Jensen.....	25.00	Serving subpoenas for Sheriff
Troy Osborn.....	8.00	Witness fee, Circuit Court.
Wm. Bennett.....	25.00	Feeding mules while Circuit Court case was pending trial.
Glass & Prudhomme.....	2.00	Printing and supplies for Assessor's office.
Roy C. Moullen.....	35.55	(Continued) Supplies for Sheriff's car.
Glass & Prudhomme.....	12.35	Supplies for Assessor's office.
C. A. Brittingham.....	1.35	Repairing in County Treasurer's office.
Chas. King.....	317.75	Care of County Poor
Ralph J. Rimer.....	4.25	Justice fees, State vs. C. E. Clapp.
Leon M. Brown.....	15.00	Premium on County Surveyor's Bond.
The Times-Herald.....	10.10	Supplies for District Attorney.
The Times-Herald.....	107.75	Printing-Lawen Irrigation Notice.
Mrs. I. Schwartz.....	8.00	Rent of piano for High School.
D. N. Varien.....	30.27	Refund of Tax collected for Building fund.
L. A. Londagin.....	539.13	Hauling Lumber for Bridges.
Len Vickers.....	75.00	Labor on County road.
Bolton Bodmer Co.....	.90	Coal furnished for road work.
Henry Gullickson.....	19.95	Assisting County Surveyor.
Harry Z. Smith.....	2.50	Hauling Road Machinery.
I. S. Geer.....	1.60	Supplies furnished for road work.
Mrs. Winnie Solomon.....	14.75	Laundry for Influenza Hospital.
Mrs. D. L. Newell.....	25.00	Nursing Influenza patients.
Mrs. Etta Potter.....	26.00	Nursing Influenza patients.
Harry Withers.....	3.00	Eggs for Influenza hospital.
Helen M. Norris.....	.75	Eggs for Influenza hospital.
Gorden O. Brady.....	100.00	(Continued) Goods furnished Influenza patients.
S. E. Drinkwater.....	14.50	Cooking for Influenza hospital.
Mrs. S. F. Tyler.....	2.00	Eggs furnished Influenza hospital.
Lois Sweek.....	20.00	Nursing Influenza patients.
Mrs. E. C. Sizemore.....	75.00	Nursing Influenza patients.
Rollin Gowen.....	4.00	Working at Influenza hospital.
Welcome Pharmacy.....	6.25	Medicine for Influenza patients.
W. L. Blott.....	50.00	Eggs furnished Influenza patients.
J. W. Crawford.....	10.20	Supplies for Influenza Hospital.
Mrs. R. L. Haines.....	2.00	Fever charts for Influenza hospital.
Joe. D. Cook.....	6.50	Working at Influenza hospital.
Mrs. Lackman.....	4.65	Laundry for Influenza hospital.
Ada Allen.....	127.50	House rent and Nursing Influenza patients.
The Welcome Pharmacy.....	35.90	Supplies for influenza hospital.
Bart F. Siler.....	37.50	Wood furnished Influenza hospital.
Jack Withers.....	103.00	Nursing at Influenza hospital.
Mrs. L. F. Wiseman.....	48.50	Nursing at Influenza hospital.
Farmers Exchange.....	57.85	Supplies for influenza hospital.
Welcome Pharmacy.....	7.00	Supplies for influenza hospital.
Chas. Riggs.....	40.00	(Continued) Working at Influenza hospital.
Lewis Connolly.....	45.00	Nursing at Influenza hospital.
Andy Irwin.....	45.50	Assisting with Influenza hospital.
Burns Cash Store.....	60.71	Supplies for Influenza hospital.
Mrs. Lois Brandon.....	10.00	Assisting Influenza patients.
C. E. McPheeters.....	11.00	Wood furnished Influenza hospital.
Mrs. A. Dunn.....	14.75	Laundry for Influenza hospital.
Lugaburg, Dalton & Co.....	12.60	Supplies furnished Influenza hospital.
Blanche Drinkwater.....	69.00	Nursing at Influenza hospital.
Burns Meat Market.....	9.25	Supplies for Influenza hospital.
Burns Meat Market.....	15.35	Supplies for Influenza hospital.

L. E. Reed.....	3.50	Supplies for Influenza hospital.
Rimrock Dairy.....	6.80	Supplies for Influenza hospital.
Harry Danley.....	136.00	Auto hire during Influenza epidemic.
Burns Garage.....	4.00	(Continued) Auto hire Influenza epidemic.
Fireweed's Hospital.....	70.00	Nursing during Influenza epidemic.

I, Chester Dalton, County Clerk and Clerk of the County Court in and for Harney County, State of Oregon, do hereby certify that the foregoing is a correct and true list of all claims allowed, disallowed and continued by the County Court of Harney County at the February 1919 term.

CHESTER DALTON,
County Clerk.

U. S. ORGANIZES SAVING SOCIETIES ALL OVER NATION

New York Thrift Clubs Meet Success, Says Times

The government of the United States is doing something it never did before—organizing societies. The Treasury Department has recommended and is furthering the formation of Thrift Clubs and War Savings Stamp societies in every shop, office, store and industry in the land, not to mention the thousands of such clubs already organized among the school children of the nation.

As an indication of the tremendous underlying importance of this new activity of the government to make America a nation of savers and investors, the New York Times in its issue of January 14 devotes a whole column of its financial page to a story of the initiation of Thrift Clubs among the employes of New York banks and the instant success of the idea. The Times says:

"The Thrift Club campaign for the sale of Stamps and Certificates in the downtown banks has brought a response that has surprised the campaign managers. Subscription to the Stamps in many cases has meant self denial and sacrifice and many of the men and women workers are facing increases in the cost of living disproportionate to salary increases.

"Methods of meeting stamp subscription as they come due are discussed at meetings of the societies and both men and women profit themselves to do without such things as tobacco, candy, silk stockings and other luxuries."

One society with a 100 per cent membership in the office where it was formed, bought \$1000 worth of War Savings Stamps and Certificates last year.

Your boy will be a better man than you are if you give him a weekly allowance for Thrift Stamps. Let him buy them himself.

Start figuring now on your personal quota of Victory Liberty Bonds. If you don't, start figuring on increased taxes.

The Yule Log.

The ceremony of the Yule log, which is generally derived by authorities to be traceable to the pagan fires which were performed at that season of the year before the coming of Christianity, was nevertheless the most joyous of the ceremonies observed on Christmas eve in medieval times.—New York Mail.

The only entertainment left to the German crown prince in his banishment is the fun of trying to get a divorce.

When the price of butter and eggs goes down do you suppose that the cow and the hen feel as if they were losing caste?

Portland Firm

Wishes to make agency arrangement with first-class responsible citizen of Burns, as agent for large Casualty and Bonding Companies. Man must be high-grade citizen, ambitious and energetic.

Address Representative, L. W. care of Times-Herald, Burns

DELCO-LIGHT

The complete electric light and power plant

Specified and used by the U.S. Army and Navy, the Red Cross and the Y.M.C.A.



More than four thousand Delco-Light plants were delivered for war work. They were used to supply electric light in camps, storehouses, hospitals, Y. M. C. A. huts, airplane hangars, submarines and other branches of the service.

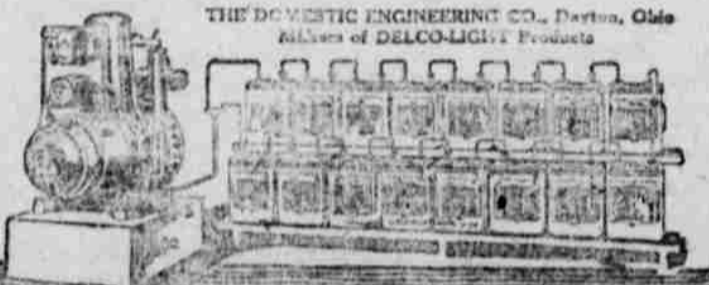
In Red Cross hospitals, at the front, Delco-Light operated life-saving X-ray apparatus.

Delco-Light was specified by the Government because it is dependable, efficient, simple to operate—requires little attention, and because it is AIR-COOLED.

The result of Government tests and the satisfactory use of Delco-Light on over 10,000 farms are your assurance that Delco-Light will give you the same dependable service.

It better living conditions—increases farm efficiency, and soon pays for itself in time and labor saved.

MODERN APPLIANCE CO., Distributors, Seattle, Wash. BURNS GARAGE -- Local Dealers



THE DOMESTIC ENGINEERING CO., Dayton, Ohio Sole Agents of DELCO-LIGHT Products

DELCO-LIGHT is the best thing that has ever happened to more than 60,000 farms

BRIGHT DAYS AHEAD FOR THE FARMER

Congress Asked to Guarantee Wheat Price—Bean Crop Sure to Be Sold

Of all the producers the farmer is going to find himself in the best position financially during the period of readjustment, according to reports coming out of Washington from day to day. The United States Food Administration the other day asked Congress to appropriate \$1,250,000,000 to maintain the price of wheat at \$2.20, a figure guaranteed by the Government for the 1919 wheat crop prior to the ending of hostilities. It seems likely that the Food Administration will father other legislation and decrees which will protect the farmer against lowering prices.

Following hard upon that announcement the California Food Administration made public the fact that the Government is going to purchase virtually the entire bean crop of the state for the army and navy. The Government has been purchasing about 5000 tons of beans a month at a higher figure than beans ever brought before the war.

The average price of wheat to the farmer on July 1, 1914, was 75.9 cents per bushel. In other words the Government guaranteed to the wheat raiser for a period of two years an advance of 194 per cent over what his product brought in normal times. Competent authorities estimate that should the Government withdraw its guarantee now that the fighting is over, wheat would drop to at least \$1.35 per bushel and probably lower.

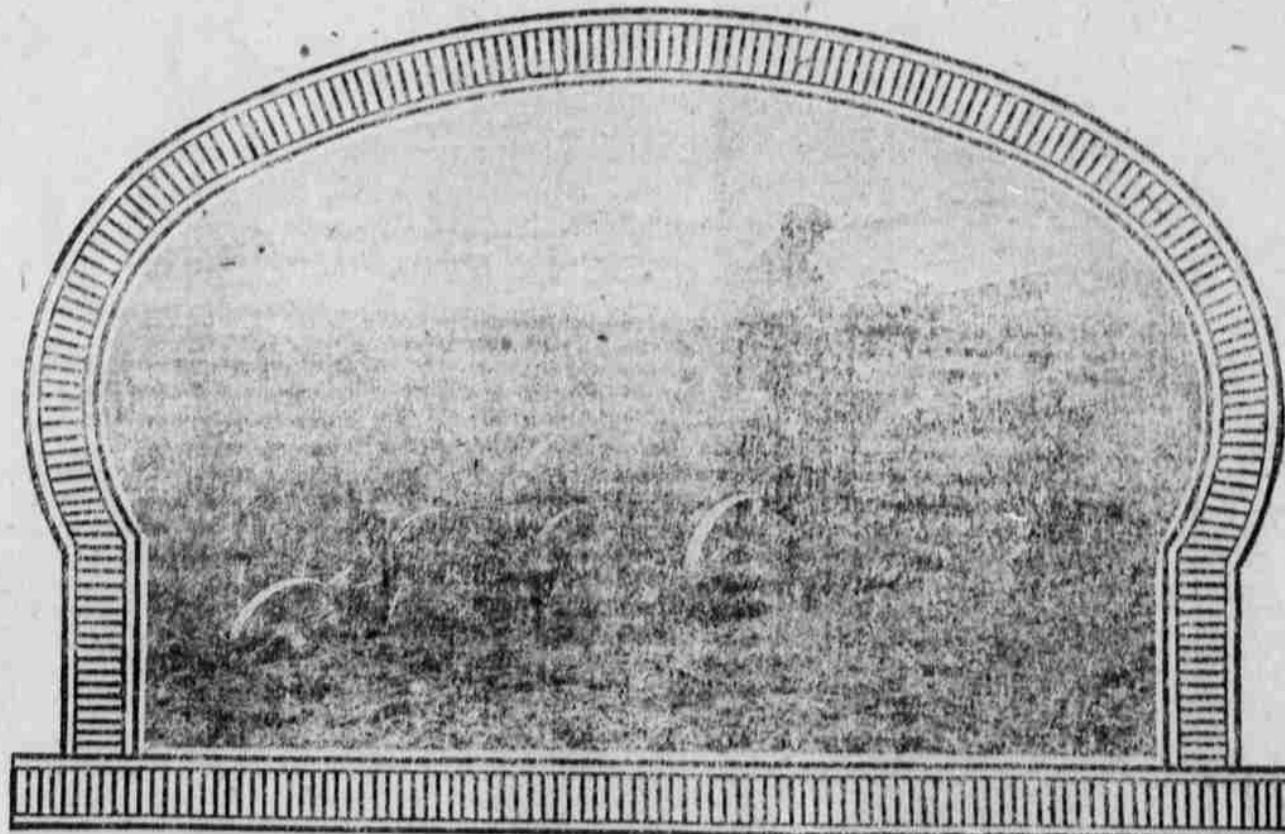
In the light of all this the Government expects the farmer to participate more than ever in the coming Victory Liberty Loan.

"So you lost your leg in Flanders," said a man to one of the boys back from France.

"No, I gave it," the soldier answered. Lend your money to your country in the Victory Liberty Loan.

New 1919 Model H Cleveland Tractor

SIMPLE—POWERFUL—COMPACT—DURABLE—EFFICIENT



Small But Powerful

Means convenience in handling, low operating cost. Results are large because of great power and efficiency in working on all kinds of soil.

Does All Kinds of Work

Best all-purpose tractor—because it is a common sense tractor. Does all kinds of work WELL. Built right—does the work right. Takes the guesswork out of farming.

Answers the Demand

For simplicity, compactness and all around ability the Cleveland Tractor is best by test.

The Tractor for any Farm

Has proved itself efficient under all conditions. Works on any soil. Lays its own track. Doesn't pack the ground or mire down.

Service

Complete line of parts carried. Expert tractor service men. Prompt attention to all matters.

1919 Features

Added features of the Cleveland for the 1919 season make it more valuable than ever—write for free information on the 1919 Model Cleveland Tractor.

Orders placed now will insure deliveries.

McNeff Tractor & Auto Company
Distributors—Oregon, Washington, Panhandle of Idaho
Portland, 225 Pittock Block Oregon