




 Tranquility surrounds this 3548 sq. ft., 4 bedroom, 3 bath home with Deschutes River views. Floor to ceiling glass, 18' custom fireplace, gorgeous master suite, workout room, 4 car garage and heated driveway. \$2,999,999 • MLS 220128029  
**CAROL SWENDSEN, Broker, 503.880.2788**



 Stunning custom home in Hillside Park. Recently remodeled with breathtaking panoramic views. 3071 sq. ft., 3 bedroom, 3.5 bath home with designated office, bonus room, and gorgeous paver patio. \$1,695,000 • MLS 220128548  
**JOHN SNIPPEN, Principal Broker, 541.948.9090**



**OPEN SATURDAY 10-1**  
**MANDY GRITZNER, Broker, 541.408.8877**  
Two master suites and RV parking in sought after Ridgewater. Paved walking path and the canal trail out your back door. 2675 sq. ft., 4 bedroom, 3.5 bath. 61136 Hilmer Creek Drive, Bend.  
\$729,000 • MLS 220126891



**OPEN SUNDAY 10-1**  
**TIFFANY GIDLEY, Broker, 503.851.5321**  
Two master suites and RV parking in sought after Ridgewater. Paved walking path and the canal trail out your back door. 2675 sq. ft., 4 bedroom, 3.5 bath. 61136 Hilmer Creek Drive, Bend.  
\$729,000 • MLS 220126891



**OPEN SUNDAY 10-1**  
**SARAH BROWN, Broker, 541.420.2764**  
Upgraded 2840 sq. ft., 4 bedroom, 2.5 bath home in Gardenside. Wood floors, custom cabinetry, spacious bedrooms, and fenced backyard with patio. 61733 Darla Place, Bend.  
\$699,000 • MLS 220129693

MLS 220129528 **NEW LISTING**

**NW CONTEMPORARY ON 19 ACRES | \$4,850,000**  
Kristi Kaufman/Catherine Scanland  
541.610.2878, 541.233.3191  
Brokers

MLS 220129312 **NEW LISTING**

**HOLLOW PINE ESTATE \$699,900**  
Michelle Tisdell  
541.390.3490  
Broker

MLS 220129693 **NEW LISTING**

**UPGRADED IN GARDENSIDE \$699,000**  
Sarah Brown  
541.420.2764  
Broker

MLS 220129591 **NEW LISTING**

**SPACIOUS NE BEND HOME \$615,000**  
Leah Ross  
541.678.8988  
Broker

MLS 220129734 **NEW LISTING**

**DESCHUTES RIVER WOODS \$589,000**  
Sarah Brown  
541.420.2764  
Broker

MLS 220129440 **NEW LISTING**

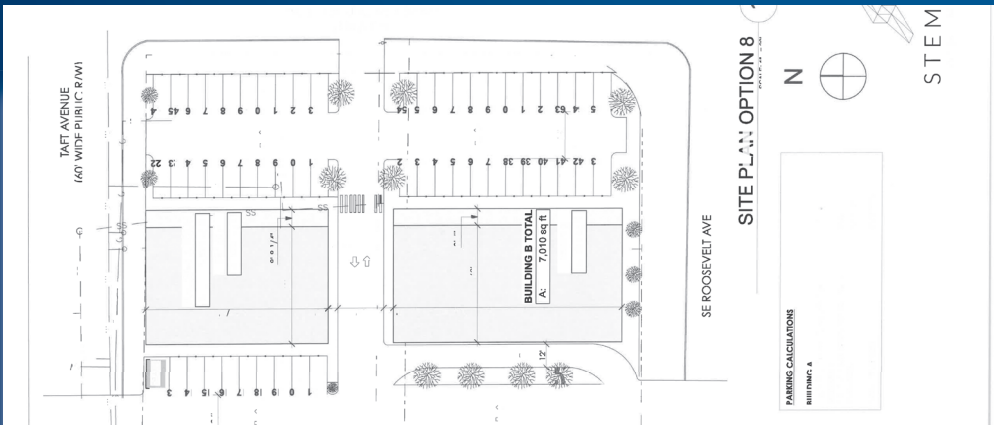
**NE REDMOND \$379,000**  
Kristi Kaufman/Catherine Scanland  
541.610.2878, 541.233.3191  
Brokers

MLS 220129325 **NEW LISTING**

**PRINEVILLE COTTAGE \$249,000**  
Mary Doyle  
541.280.4372  
Principal Broker

MLS 220129716 **NEW LISTING**

**WELL KEPT IN METOLIUS \$237,500**  
Carol Swendsen  
503.880.2788  
Broker



**COMMERCIAL PROPERTY**  
Highly visible development site, just south of Wilson Avenue. Approximately 27,007 sq. ft. of land. Site will be available in 2021. Plans may begin now. Build to suit or ground lease. 10-20 year term.  
**PAULA VAN VLECK, Broker, 541.280.7774**



**COMMERCIAL PROPERTY**  
Turn-key restaurant in great downtown Redmond location! 2102 sq. ft. building, updated inside & out, large indoor & outdoor seating, equipment, fixtures and furniture included. \$895,000 • MLS 220117532  
**BILL PON, Principal Broker, 541.815.4140**