



MLS 2201234280

**NEW LISTING**

**COMMERCIAL BUILDING**  
**\$2,300,000**  
 Al Eastwood, 541.350.0987  
 Principal Broker



MLS 220124187

**NEW LISTING**

**PRISTINE HOME IN SISTERS**  
**\$1,050,000**  
 The Power Group, 541.420.2764  
 Brokers



**NEW LISTING**

Picture perfect Valhalla Heights home nestled in the pines. 2698 sq. ft., 5-bedroom, 2.5 bath with vaulted ceilings, brick hearth, new carpet, and great natural light on .39 acre in NW Bend. \$850,000 • MLS 220124151  
 JOHN SNIPPEN, Broker, 541.948.9090



MLS 220124371

**NEW LISTING**

**DESCHUTES RIVER WOODS**  
**\$765,000**  
 Greg Miller, 541.408.1511  
 Broker



MLS 220124407

**NEW LISTING**

**10 ACRES WITH UTILITIES**  
**\$570,000**  
 Matt Robinson, 541.977.5811  
 Principal Broker



Privacy & seclusion in Gilchrist. Custom built 2832 sq. ft. home with 2 full masters, chef's kitchen, and open living space. 2 garages, greenhouse, large shop and 22 cord wood lean too. \$759,000 • MLS 220122165  
 CAROL SWENDSEN, Broker, 503.880.2788



MLS 220124020

**NEW LISTING**

**DEVELOPMENT POTENTIAL**  
**\$499,000**  
 Grant Ludwick, 541.633.0255  
 Principal Broker



MLS 220124261

**NEW LISTING**

**LARSPUR**  
**\$485,000**  
 John Snippen, 541.948.9090  
 Principal Broker



**OPEN SATURDAY 11-1**

CAROL SWENDSEN, Broker, 503.880.2788  
 Impressive mountain views! 1888 sq. ft., 3 bedroom, 2 bath with large den built in 2014 on 2.09 acres in Crooked River Ranch. Hike the canyon out your back door down to the river for fishing!  
 9413 SW Shad Road, Terrebonne. \$539,000



MLS 220124264

**NEW LISTING**

**BUSINESS OPPORTUNITY**  
**\$450,000**  
 Al Eastwood, 541.350.0987  
 Principal Broker



MLS 220124000

**NEW LISTING**

**SW REDMOND**  
**\$439,900**  
 Carrie DiTullio, 541.280.0992  
 Broker



**OPEN SATURDAY & SUNDAY 1-4**

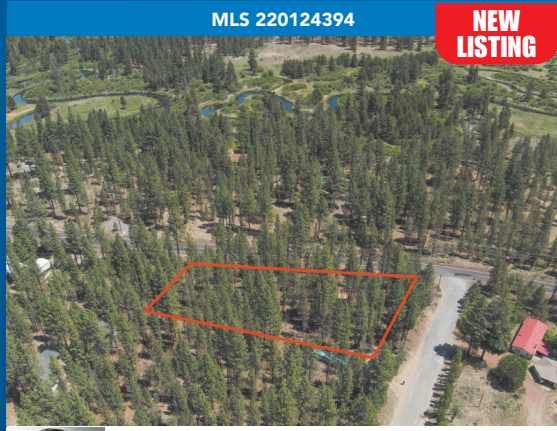
SUDIE MYERS, Broker, 207.860.8585  
 Single-level 1402 sq. ft., 2 bedroom, 2 bath townhouse with 2-car garage on .18 acres. Complete with vaulted ceilings in the Great Room/Dining area, huge master suite and large outdoor patio areas.  
 3031 NW Golf View Drive, Bend. \$529,000



MLS 220124289

**NEW LISTING**

**SILVER LAKE**  
**\$159,950**  
 Mary Doyle, 541.280.4372  
 Principal Broker



MLS 220124394

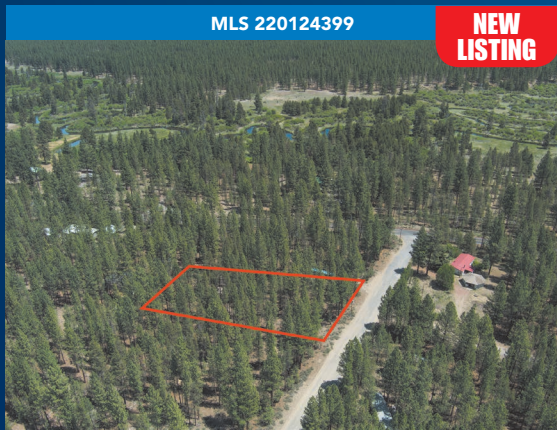
**NEW LISTING**

**LA PINE .97 ACRE**  
**\$129,900**  
 Jan Higgins, 541.408.8926  
 Principal Broker



**COMMERCIAL PROPERTY**

This 10-acre parcel is part of the new Southeast Area Planned District. Eligible for annexation into the City of Bend. Mixed Employment District (ME) allows live-work townhomes as a permitted use. \$3,200,000 • MLS 201910874  
 AL EASTWOOD, Principal Broker, 541.350.0987



MLS 220124399

**NEW LISTING**

**LA PINE .99 ACRE**  
**\$129,900**  
 Jan Higgins, 541.408.8926  
 Principal Broker



MLS 220124224

**NEW LISTING**

**THE RIDGE 4D DEEDED SHARE**  
**\$32,000**  
 Valerie Camacho, 541.728.1969  
 Broker



**COMMERCIAL PROPERTY**

Build to suit opportunity on Bend's south side in front of Walmart. Four commercial retail spaces, one with drive thru. Rent determined on deal by deal basis depending on construction costs. Available fall/winter 2021.  
 PAULA VAN VLECK, Broker, 541.280.7774

**COLDWELL BANKER**  
**BAIN**

541.382.4123  
 www.bendproperty.com  
 486 SW Bluff Dr. in the Old Mill District  
 Open Monday-Friday 8am-5pm  
 Saturday by appointment.

