



Traditional elegance on Bend's Westside! PREMIER 10 ACRE LOT in The Highlands with stunning Cascade views. 6740 sq. ft., 5 bedroom, 5 bath + 2 1/2 baths, 2 main level home offices + bonus room. Chef's kitchen opens to family room. Formal living and dining. Multiple outdoor patios to take in the space, privacy and phenomenal views. \$5,500,000  
 KRISTI KAUFMAN, Principal Broker, 541.610.2878 / CATHERINE SCANLAND, Broker, 541.233.3191



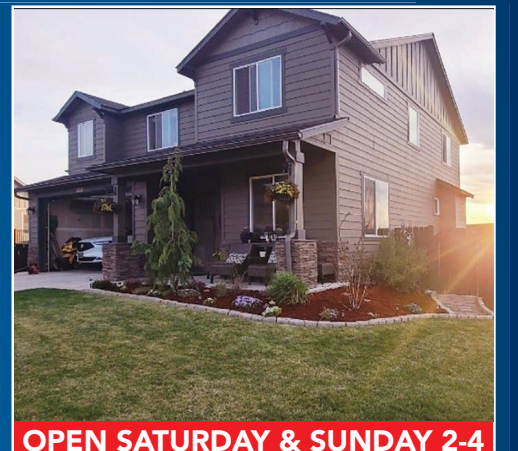
Stunning Mid-Century modern in Northwest Crossing. 2696 sq. ft., 3 bedroom, 2.5 bath with designated office and spacious bonus room. Amazing outdoor space with covered patio. \$1,635,000. MLS 220122458  
 JOHN SNIPPEN, Principal Broker, 541.948.9090



Privacy & seclusion in Gilchrist. Custom built 2832 sq. ft. home with 2 full masters, chef's kitchen and open living space. 2 garages, greenhouse, large shop and 22 cord wood lean too. \$759,000. MLS 220122165  
 CAROL SWENDSEN, Broker, 503.880.2788



**OPEN SATURDAY & SUNDAY 1-4**  
 SUDIE MYERS, Broker, 207.860.8585  
 Huge Cascade views. 2.38 acres. 2950 sq. ft., 3 bedroom, 2.5 bath + bonus. 2 bedroom, 1 bath apartment! Shop/RV garage. 15 min from Bend. Sisters Schools. 17552 Plainview Court, Bend. \$1,049,000.



**OPEN SATURDAY & SUNDAY 2-4**  
 TIFFANY GIDLEY, Broker, 503.851.5321  
 Full Cascade Mountain views! 2192 sq. ft., 4 bedroom + office, 2.5 bath home on .21 acre corner lot. Open floor plan with all new flooring. 4501 SW Majestic Avenue, Redmond. \$680,000. MLS 220123397



MLS 220123067 **NEW LISTING**  
**THE BRIDGES**  
**\$750,000**  
 Michelle Tisdell, 541.390.3490  
 Broker



MLS 220123170 **NEW LISTING**  
**NW BEND**  
**\$739,900**  
 The Power Group,  
 541.420.2764



MLS 220123128 **NEW LISTING**  
**DESCHUTES RIVER WOODS**  
**\$725,000**  
 Greg Miller, 541.408.1511  
 Broker



MLS 220123074 **NEW LISTING**  
**NORTHWEST CROSSING**  
**\$685,000**  
 Debbie Benson, 541.480.6448  
 Broker



MLS 220123372 **NEW LISTING**  
**2.48 ACRES**  
**\$649,000**  
 Greg Floyd, 541.390.5349  
 Broker



MLS 220123209 **NEW LISTING**  
**NEW BUILD IN LA PINE**  
**\$519,990**  
 Carol Swendsen, 503.880.2788  
 Broker



MLS 220123183 **NEW LISTING**  
**LA PINE HOME + ADU**  
**\$499,990**  
 Emily Aronson, 541.419.2334  
 Broker



MLS 220123169 **NEW LISTING**  
**NE BEND SINGLE-LEVEL**  
**\$499,000**  
 Scott Huggin, 541.420.3915  
 Broker



MLS 220123043 **PENDING**  
**NE BEND**  
**\$495,000**  
 Michelle Tisdell, 541.390.3490  
 Broker



MLS 220123216 **NEW LISTING**  
**LA PINE HOME + ADU**  
**\$479,990**  
 Carol Swendsen, 503.880.2788  
 Broker



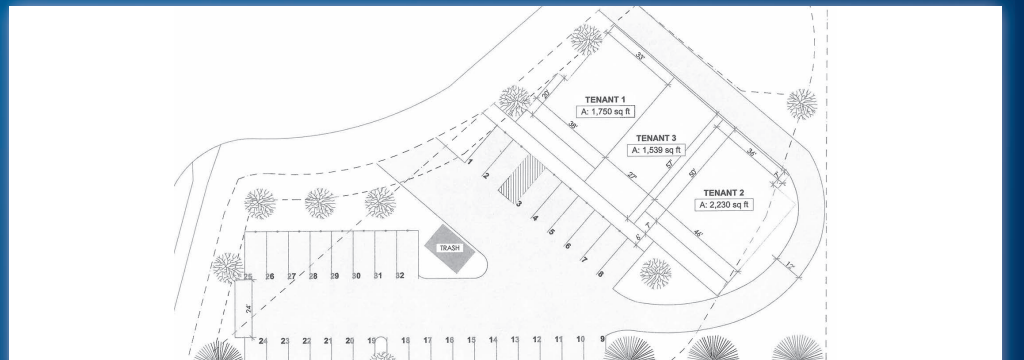
MLS 220123041 **NEW LISTING**  
**DESCHUTES RIVER WOODS**  
**\$450,000**  
 Virginia Ross, 541.480.7501  
 Broker



MLS 220123069 **NEW LISTING**  
**LA PINE 1.08 ACRE**  
**\$450,000**  
 Mandi Akins, 541.410.5824  
 Broker



Turn-key restaurant in great downtown Redmond location! 2102 sq. ft. building, updated inside & out, large indoor & outdoor seating, equipment, fixtures and furniture included. Off street parking. \$895,000. MLS 220117532  
 BILL PON, Principal Broker, 541.815.4140



Approximately 29,000 sq. ft. of commercially zoned land. Ground lease or build to suit available for tenants. Rent will be determined by the cost of the tenant's space. Great drive thru location on Bend's north side at Empire.  
 PAULA VAN VLECK, Broker, 541.280.7774

**COLDWELL BANKER BAIN** 541.382.4123  
 www.bendproperty.com  
 486 SW Bluff Dr. in the Old Mill District  
 Open Monday-Friday 8am-5pm  
 Saturday by appointment.

Visit us at: