

WEEKDAY AFTERNOON

ALSO IN HD; ADD 600 TO CHANNEL No.

MOVIES SPORTS KIDS

\*In HD, these channels run three hours ahead. / Sports programming may vary.
BD-Bend/Redmond/Sisters/Black Butte (Digital); PM-Prineville/Madras; L-La Pine; D1-DirectTV; D2-Dish Network

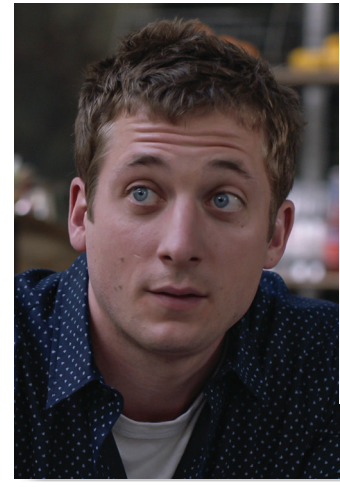
Table with columns for channel (BD, PM, L, D1, D2) and time slots (12:00, 12:30, 1:00, 1:30, 2:00, 2:30, 3:00, 3:30, 4:00, 4:30, 5:00, 5:30). Rows include channels like PAC12, PARMT, SYFY, TBN, \*TBS, TCM, \*TLC, \*TNT, \*TOON, \*TRAV.

\$25,000 ROAD TO RICHES DRAWINGS WIN Top Prize of \$1,000 CASH! FRIDAYS & SATURDAYS | 7PM - 10PM INDIAN HEAD CASINO

IndianHeadCasino.com • 541-460-7777 • US-26, Warm Springs, OR 97761 Earn entries all month. See Players' Club for details.

Continuation of the TV schedule table with columns for channel and time slots. Rows include channels like TVLND, USA, VH1, GOLF, HALL, NATGEO, NBCSN, NTOON, OUTD.

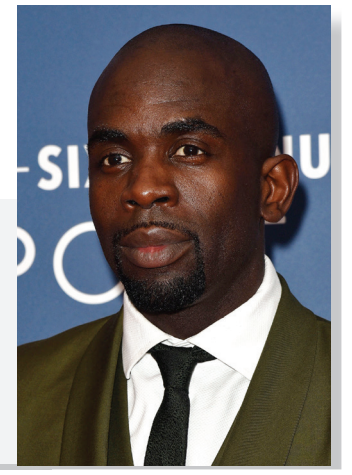
whattheywatch



Jeremy Allen White of "Shameless" on Showtime "I feel like we're watching a lot of docs, like I was watching 'The Circus' on Showtime. 'Allen v. Farrow' we've been watching. I have a new baby at home and I feel like my wife and I are at capacity for make-believe stories right now (laughs) and our heads just seem limited. So honestly, we haven't been watching all that much TV."



Kennedy McMann of "Nancy Drew" on The CW "It would definitely be a reality show, probably 'Love Island.' Or maybe 'Top Chef.' "



Jimmy Akingbola of "Kate & Koji" on Britbox "I just watched 'Call My Agent' (on Netflix). That was fantastic. That was brilliant. ... I've been watching quite a lot of the best films at the moment. 'The Sound of Music' was on and it was brilliant."