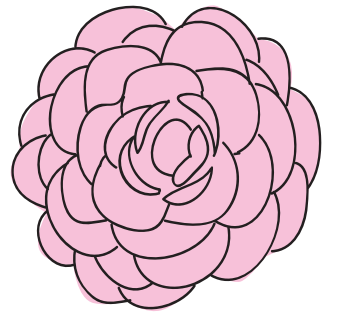


## State Flower Scramble

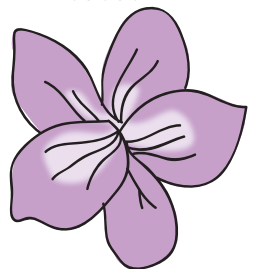
Which flower belongs to which state? Unscramble the letters underneath each flower to find out!

camellia



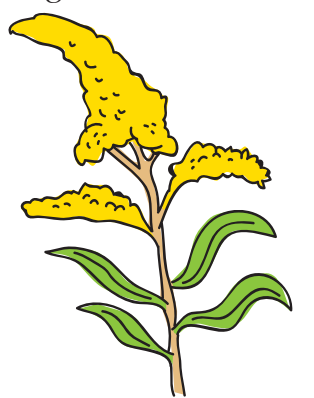
**ABAALAM**

violet



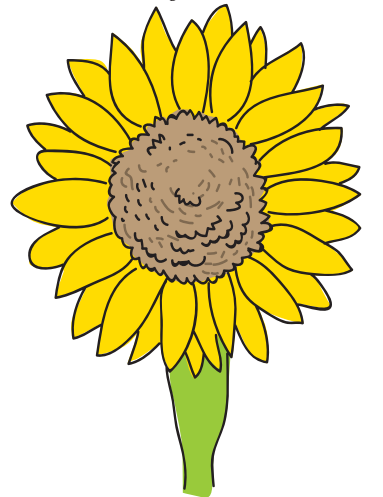
**NOSILILI**

goldenrod



**EKBRANAS**

sunflower



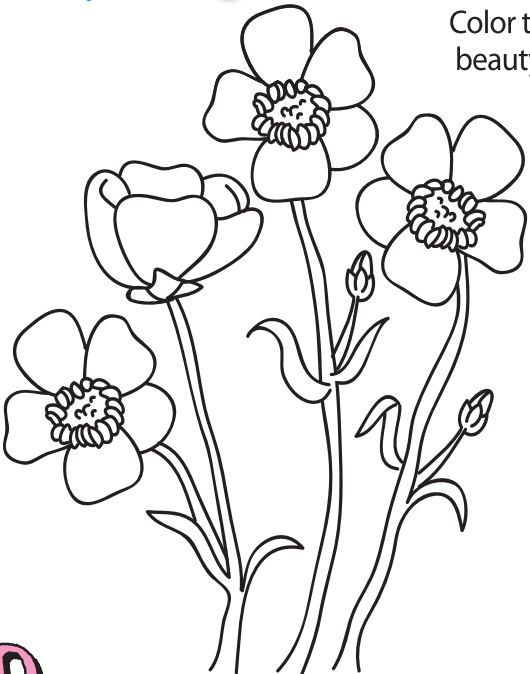
**SASANK**

April showers bring...

# WILDFLOWERS

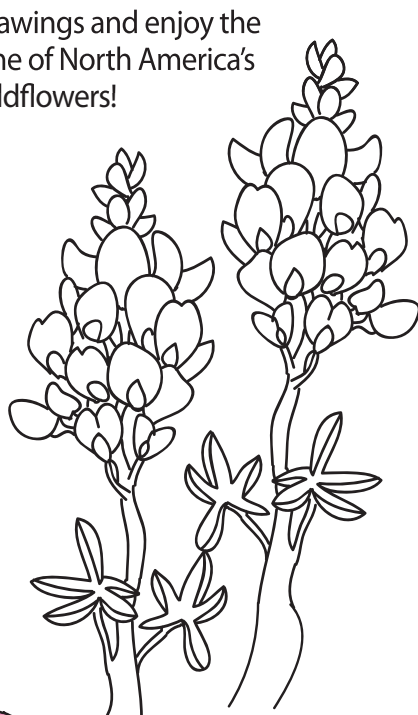
Take a walk outside and look around! Chances are you will see flowers starting to bloom. April is a month to celebrate the colorful display of flowers in our community. Even pesky weeds bloom this time of year!

Color these drawings and enjoy the beauty of some of North America's wildflowers!



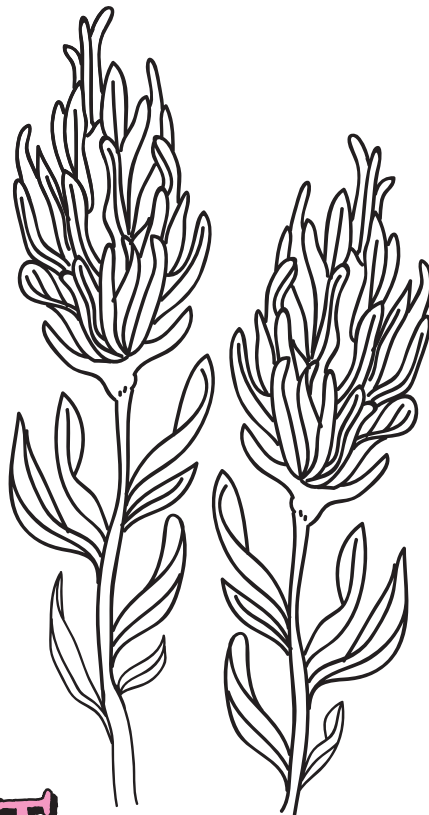
**B**uttercups have cup-shaped flowers made up of five petals. People used to believe that the rich yellow color of butter originated from a high content of buttercups in the cows' diet. This belief is false. Cows avoid buttercups because they are poisonous!

FLOWER: **YELLOW**  
STEM AND LEAVES: **GREEN**



**B**luebonnets are the Texas state flower. Some grow to be three feet high! The bluebonnet comes from the legume (bean) family.

FLOWER: **PURPLE/DARK BLUE**  
STEM AND LEAVES: **GRAY-GREEN**



**T**he Indian Paint Brush is Wyoming's state flower. It has been used to make dyes. The main pollinators of this wildflower are hummingbirds.

FLOWER: **RED-ORANGE**  
STEM AND LEAVES: **GREEN**

Look closely: Can you find the two identical bouquets of flowers?



**P**oppies are the California state flower. They can be found blooming throughout the state in spring.

FLOWER: **ORANGE**  
STEM AND LEAVES: **GREEN**

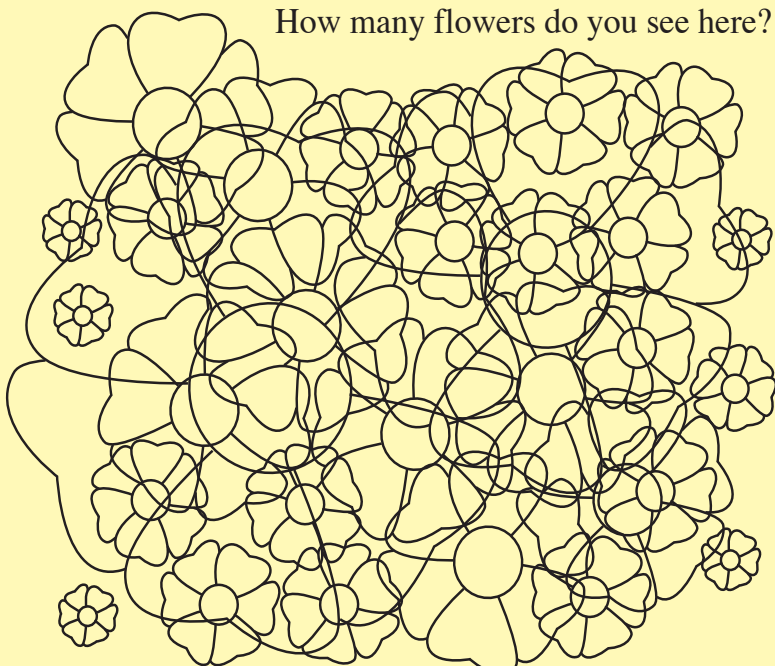
### Extra! Extra! Circle It!

On one page of the newspaper, find and circle the letters that spell each of the flowers on this page. Connect the circled letters to spell each word.

Standards Link: Language Arts: Follow simple written directions.

### Kid Scoop Puzzler

How many flowers do you see here?



Standards Link: Reading Comprehension: Follow simple written directions.

### Double Double Word Search

- BLUEBONNET
- BUTTERCUP
- LEGUME
- INDIAN
- FAMILY
- TEXAS
- BLOOM
- BRUSH
- SEEDS
- AVOID
- PODS
- DYES
- STEM
- COWS
- RICH

Find the words in the puzzle. How many of them can you find on this page?

T N A I D N I H B E  
T E N N O B E U L B  
E M D O N B T T M H  
X O F Y L T R E F R  
A L O O E D T U W I  
S E O R G S I R S C  
S M C H U S W O C H  
O U F A M I L Y V W  
P O D S E E D S S A

Standards Link: Letter sequencing. Recognize identical words. Skim and scan reading. Recall spelling patterns.

### Kid Scoop VOCABULARY BUILDERS

This week's word: **ORIGINATE**

The verb **originate** means to bring into being.

The annual holiday custom **originated** in ancient times.

Try to use the word **originate** in a sentence today when talking with your friends and family.

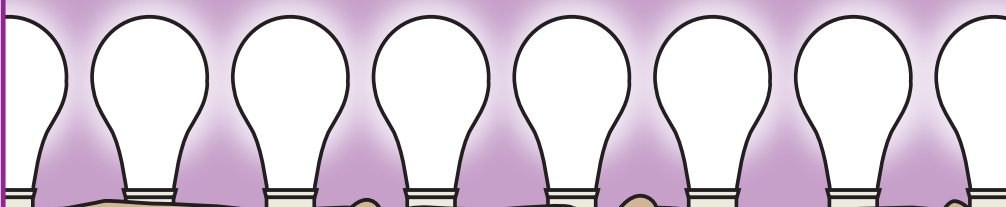
### FROM THE Kid Scoop LESSON LIBRARY

#### What's missing?

Show a friend pictures from the newspaper with a piece of the picture missing. Then have them ask questions that can only be answered "YES" or "NO" to determine what is missing.

Standards Link: Understand meaning from context clues.

#### Why did the farmer plant light bulbs?



ANSWER: Because he wanted to grow a power plant.

### Write On!

#### Spring Poems

Write a poem that describes spring in your community.