

Monday, April 5, 2021

Daily Bridge Club

Ed's good defense

By FRANK STEWART Tribune Content Agency

When I watched today's deal, North was the dreaded Grapefruit, our club member with a sulfuric disposition and a tongue to match. He berates his partners mercilessly.

West, not vulnerable, opened a weak two hearts. Grapefruit doubled and raised South's 2NT response to game. West led the king of hearts, winning, and continued with the queen. Declarer played low again, and West led a third heart.

East was Ed, our club's expert. He discarded ... the king of clubs! South took his ace, but he couldn't set up his long clubs without letting West get in. The result was down two.

IGNORANCE

"Stupidity is not a crime, partner, so you're free to go." Grapefruit growled. He would never have complimented Ed's play, of course.

Since West's bid suggested a six-card suit, South should win the second heart. He goes to dummy and returns a club to his queen. (If East plays the king, South ducks.) South can return to dummy, lead a second club and let East's king win. South has nine tricks.

DAILY QUESTION

You hold: ♠ A K 8 3 ♥ J 4 ♦ A K 6 3 ♣ 9 4 2. Your partner opens one heart, you respond one spade, he bids two clubs and you try

two diamonds. Partner then bids two hearts. What do you say?

ANSWER: Expert opinion about partner's holding would vary. My view is that he has six hearts, four clubs and extra strength. With a minimum 6-4 hand such as 7 6, A K 9 6 5 2, 5, K J 8 3, he would have rebid two hearts. Slam is possible. Bid five hearts. Partner may hold 7 6, A K 10 9 6 3, 4, A K J 5.

West dealer N-S vulnerable
NORTH ♠ A K 8 3 ♥ J 4 ♦ A K 6 3 ♣ 9 4 2

WEST ♠ J 6 ♥ K Q 10 9 6 2 ♦ 8 5 ♣ J 10 8

SOUTH ♠ 9 7 4 ♥ A 8 3 ♦ 7 4 ♣ A Q 7 6 3

West 2♥ North 3NT East Pass South 2NT Pass

Opening lead — ♥K ©2021 Tribune Content Agency, LLC

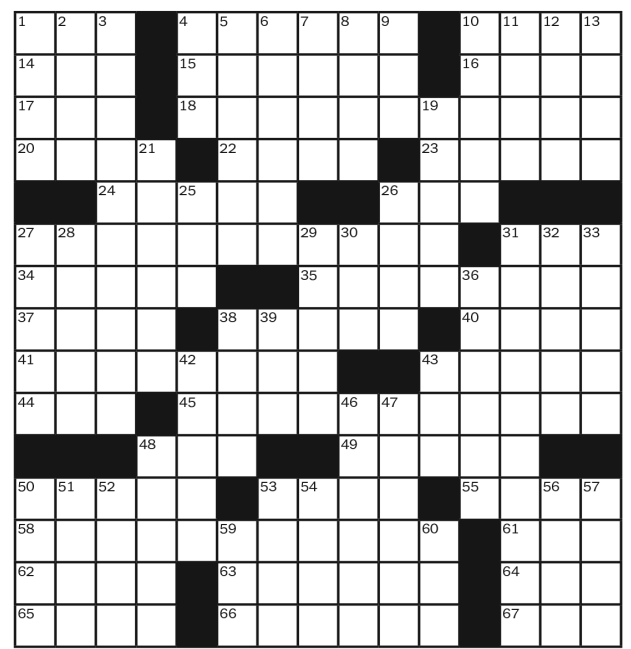
SEEKING A FRIENDLY DUPLICATE BRIDGE? Find five games weekly online at bendbridge.org

The New York Times Crossword

Edited by Will Shortz

No. 0301

- ACROSS 1 Unruly thron 4 Houston team 10 Sound heard in a long hallway, maybe 14 "___ Father who art in heaven ..." 15 Engages in thievery 16 Emotional state 17 Baton Rouge sch. 18 Seattle, 1962 20 "And you?," to Caesar 22 Queries 23 Photos at the dentist's 24 Happen next 26 Pigs' digs 27 Paris, 1889 31 Partook of a meal 34 Wake others up while you sleep, perhaps 35 Ostensible 37 100% 38 Theme park with an "Imagination!" pavilion 40 Mont Blanc and Matterhorn 41 "Why didn't I think of that!" 43 Laudable Lauder 44 Salt Lake City athlete 45 Chicago, 1893 48 "___ appétit!" 49 More recent 50 Word before shell or mail 53 Rock band that electrifies audiences? 55 Dull-colored 58 Events for which the answers to the three italicized clues were built



PUZZLE BY MICHAEL LIEBERMAN

ANSWER TO PREVIOUS PUZZLE



- DOWN 1 Undercover operative 2 Remove from power 3 Inelegant problem-solving technique 4 Nincompoop 5 One of the Twin Cities 6 Cups, saucers, pot, etc. 7 Eight lamb chops, typically, or a frame for 15 pool balls 8 Cheers at a fútbol match 9 Nine-digit government ID 10 Manicurist's board 11 Musical finale 12 Sacred 13 Lyric poems 19 Like a 10th or 11th inning, in baseball 21 Not at liberty 25 Visualize 26 Sunni or Shia, in Islam 27 TV channel for college sports 28 Arctic native 29 ___ the Grouch 30 Ply with chocolates and roses, say 31 Kind of vehicle to take off-road 32 Shelter that might be made of buffalo skin 33 '50s Ford flop 36 Made a verbal attack, with "out" 38 Garden of earthly delights 39 Pay-___-view 42 Words spoken after a big raise? 43 "Yu-u-u-uck!" 46 Charge with a crime 47 Hush-hush 48 Gymnast Simone 50 Promotional goodies handed out at an event 51 The Big Easy, in brief 52 Three-time A.L. M.V.P. (2003, 2005 and 2007), informally 53 Miles away 54 Sweetheart, in Salerno 56 One of several on a tractor-trailer 57 Pants holder-upper 59 Tanning lotion stat 60 Sneaky

Online subscriptions: Today's puzzle and more than 7,000 past puzzles, nytimes.com/crosswords (\$39.95 a year). Read about and comment on each puzzle: nytimes.com/wordplay.

BIZARRO



DENNIS THE MENACE

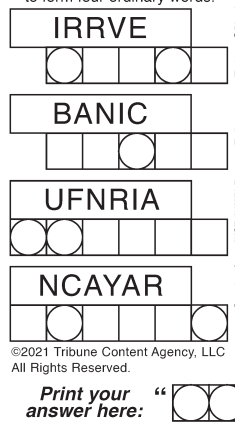


HERMAN



JUMBLE

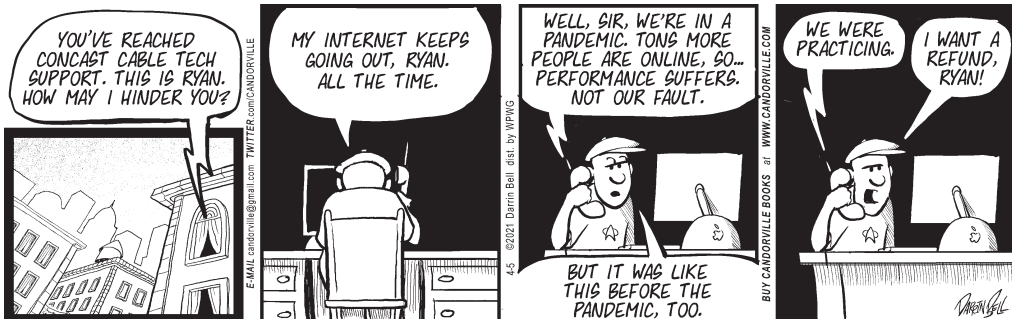
Unscramble these Jumbles, one letter to each square, to form four ordinary words.



THAT SCRAMBLED WORD GAME By David L. Hoyt and Jeff Knurek



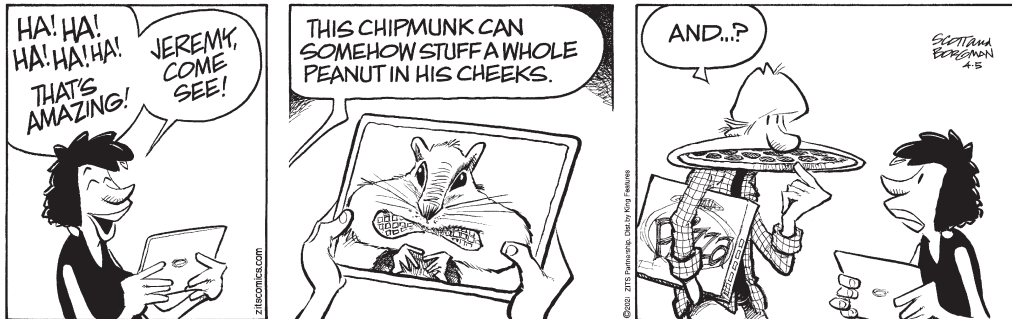
CANDORVILLE



WUMO



ZITS

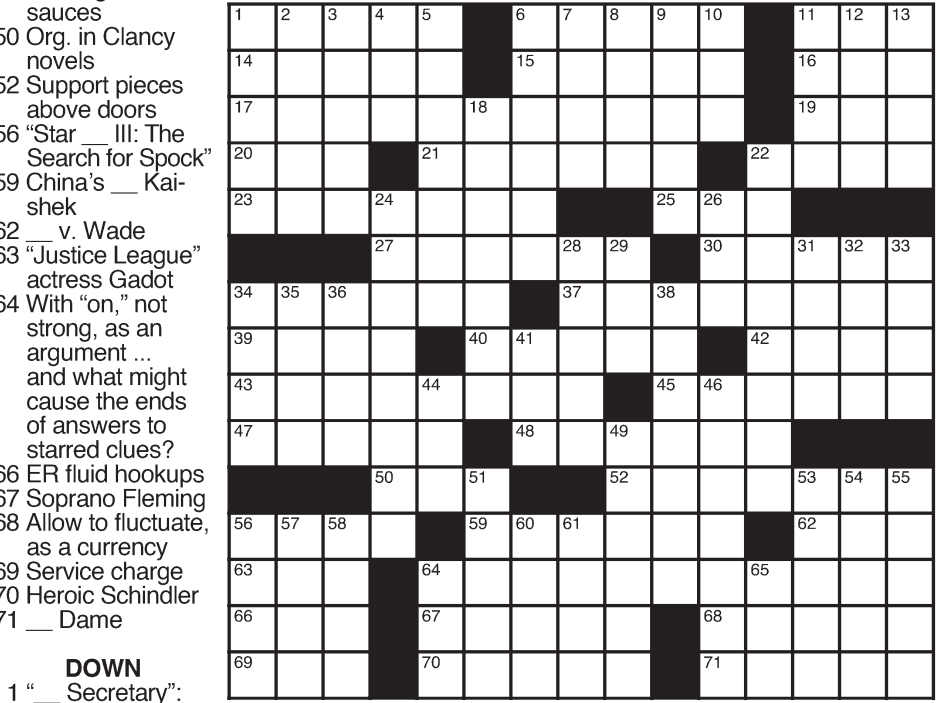


Los Angeles Times Daily Crossword Puzzle

Edited by Rich Norris and Joyce Nichols Lewis

- ACROSS 1 Guys 6 Overplay on stage 11 Sting operation 14 Rent-a-car company 15 State one's views 16 Penn or Brown, e.g. 17 *Bank form 19 Oz's ___ Woodman 20 "Smell Ready" deodorant brand 21 Prepare to exit one's car 22 Actress/inventor Lamarr 23 Like Hammett's falcon 25 Jamaican music 27 In the thick of 30 "Let me run that errand" 34 Spoke like Daffy 37 *Surprise inheritance 39 At some prior time 40 Like A-listers 42 ___ Piper: rat-removal fellow 43 "Venue for a license plate game 45 Political candidate lists 47 Key above Shift 48 Some green sauces 50 Org. in Clancy novels 52 Support pieces above doors 56 "Star ___ III: The Search for Spock" 59 China's ___ Kai-shek 62 ___ v. Wade 63 "Justice League" actress Gadot 64 With "on," not strong, as an argument ... and what might cause the ends of answers to starred clues? 66 ER fluid hookups 67 Soprano Fleming 68 Allow to fluctuate, as a currency 69 Service charge 70 Heroic Schindler 71 ___ Dame 2 Echo Dot assistant 3 Flap for a mic 4 Moody music genre 5 Insincere "My bad" 6 Breeding environment 7 Church niche 8 Paper factory 9 Troop groups 10 Get-up-and-go 11 Name, as sources 12 "Metamorphoses" poet 13 Part of a Wall St. address 18 One with confidential info 22 Thirty after the hour 24 Dated stereo component 26 Josh 28 Credit card motion 29 ___ for tat 31 Milk, in Marseille 32 TV show about a high school choir 33 Cutlass automaker 34 Myths, legends, etc. 35 Informed of 36 Ella's improv style 38 Like stored Russian dolls 41 Blitx target 44 Bi- plus one 46 Extended period of time 49 Vampire vanquisher 51 Partner of pains 53 Spew lava and ash 54 Introvert 55 Everglades plant 56 "The workweek's almost over!" 57 Glowing review 58 Above all ___ more than anything 60 Slugger Aaron 61 Swedish furniture chain 64 Sign of a sellout 65 Musician Yoko

ANSWER TO PREVIOUS PUZZLE:



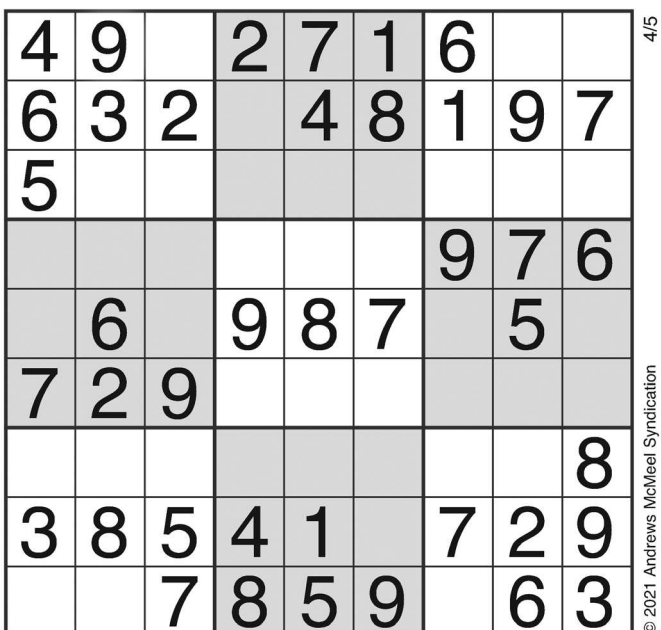
- DOWN 1 "Secretary": 2010s CBS drama

By Sheryl Bartol ©2021 Tribune Content Agency, LLC

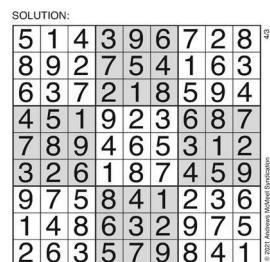
04/05/21

SUDOKU

Complete the grid so that every row, column and 3x3 box contains every digit from 1 to 9 inclusively.



SOLUTION TO PREVIOUS SUDOKU



DIFFICULTY RATING: ★☆☆☆☆