



Eclectic styling and eco-friendly features in this 2 bedroom, 1 bath, 1131 sq. ft. home on Bend's westside. Open floor plan with exposed beams, stone, wood accents and flexible second story loft. \$550,000 • MLS 220118528  
**JOHN SNIPPEN, Principal Broker, 541.948.9090**



1296 sq. ft., 3 bedroom, 2 bath in the quiet town of Terrebonne on .29 acre with abundant fruit trees and blooming flowers. New carpeting, bamboo flooring, fresh interior paint. \$350,000 • MLS 220118771  
**CAROL SWENDSEN, Broker, 503.880.2788**

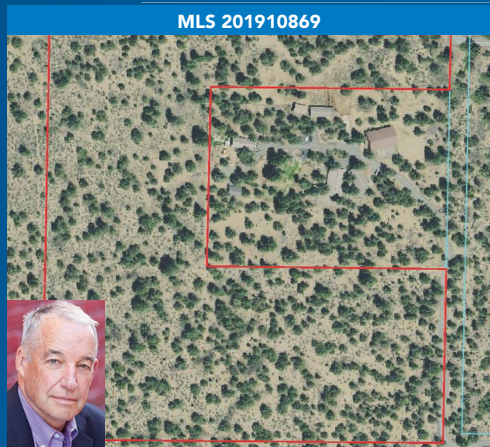


MLS 220119273

**NEW LISTING**



**BRASADA RANCH .54 ACRE**  
**\$179,000**  
**Annie Montgomery, 541.480.4301**  
 Principal Broker



MLS 201910869



**.28 ACRE DEVELOPMENT POTENTIAL**  
**\$3,600,000**  
**Jim Moran, 541.948.0997**  
 Broker



MLS 220116104



**NORTH RIM SINGLE-LEVEL**  
**\$2,900,000**  
**Debbie Benson, 541.480.6448**  
 Broker



MLS 220112840



**LA PINE 9-UNIT MOTEL**  
**\$1,125,000**  
**Al Eastwood, 541.350.0987**  
 Principal Broker



MLS 220117532



**REDMOND RESTAURANT**  
**\$995,000**  
**Rachel Lemas, 541.896.1263**  
 Broker



MLS 220114984



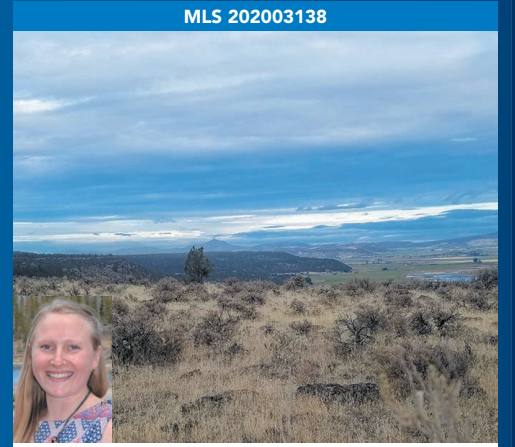
**EAGLE CREST TO BE BUILT**  
**\$729,000**  
**Greg Floyd, 541.390.5349**  
 Broker



MLS 220117100



**LA PINE INDUSTRIAL**  
**\$619,000**  
**Matt Robinson, 541.977.5811**  
 Principal Broker



MLS 202003138



**PRINEVILLE INDUSTRIAL**  
**\$599,000**  
**Sierra Holmly, 541.600.7777**  
 Broker



MLS 220100347



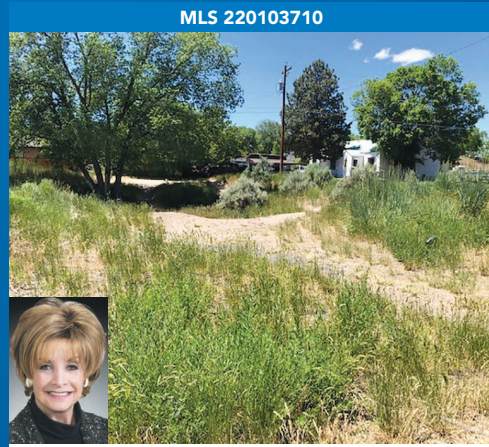
**PRONGHORN FAZIO COURSE**  
**\$235,000**  
**Laura Curry, 541.408.3464**  
 Broker



MLS 202002030



**3 LOTS IN PRINEVILLE**  
**\$99,000**  
**Mary Doyle, 541.280.4372**  
 Principal Broker



MLS 220103710



**BURNS .23 ACRE LOT**  
**\$18,500**  
**Suzie Lee, 541.408.6483**  
 Broker



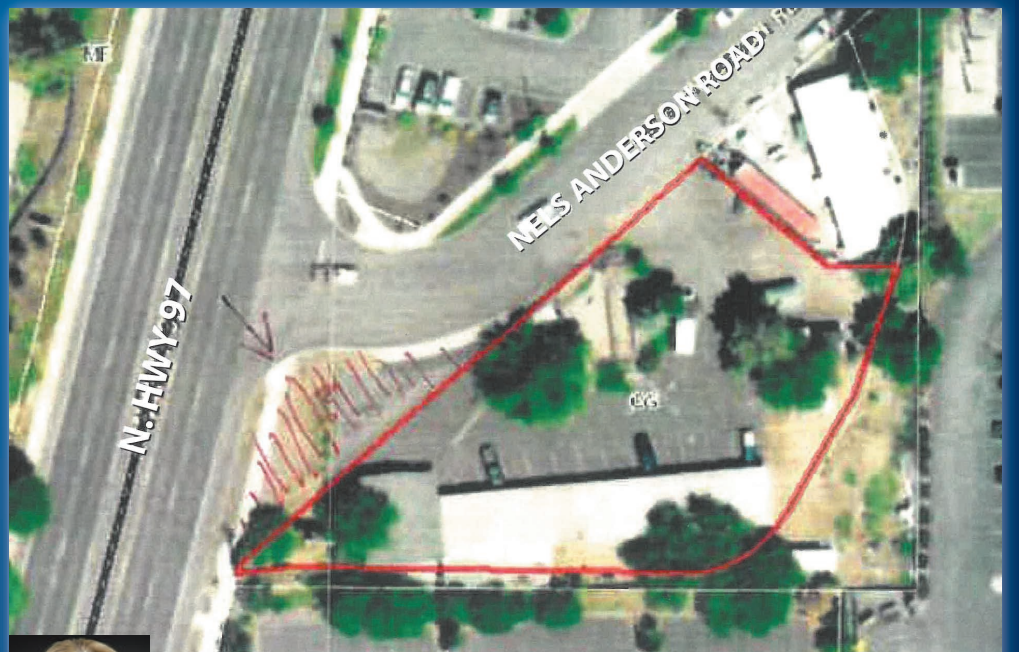
MLS 202000821



**1 ACRE CHRISTMAS VALLEY**  
**\$7,900**  
**Jan Higgins, 541.408.8926**  
 Principal Broker



Great owner/user opportunity just off Hwy 97 on 3rd Street in La Pine. 1762 sq. ft. building was formerly a dental practice on .54 acre lot . For sale or lease. \$385,000 or \$1.35/SF +NNN • MLS 220110241  
**BILL PON, Principal Broker, 541.815.4140**



Great, visible location on Bend's north side. Ground lease or build to suit on approximately 29,615 sq. ft. of land. Perfect for fast food, bank or convenience store. Call for more details.  
**PAULA VAN VLECK, Broker, 541.280.7774**

**COLDWELL BANKER**  
**BAIN**

**541.382.4123**  
**www.bendproperty.com**  
 486 SW Bluff Dr. in the Old Mill District  
 Open Monday-Friday 8am-5pm  
 Saturday by appointment.

