

art exhibits



Submitted photo

“Blue Mask” by Jill Neal is on display at the Jill Neal Gallery in Sisters. Gallery is currently open by appointment only, and works are available to view online.

Art Adventure Gallery: Featuring works from local gallery artists; works available to view online and in person by appointment only; 185 SE Fifth St., Madras; artadventuregallery.com or 541-475-7701.

Artists’ Gallery Sunriver: Featuring the works of 30 local artists; 57100 Beaver Drive, Building 19, Sunriver; artistsgallerysunriver.com.

Box Factory Breezeway: Featuring works from Zach Filkins, proceeds from sales will go towards The Giving Plate; through March 26; 550 SW Industrial Way, Bend; boxfactorybend.com or 541-330-0025.

Canyon Creek Pottery: Featuring pottery by Kenneth Merrill; 310 N. Cedar St., Sisters; 541-549-0366.

High Desert Museum: “Daredevils,” an exhibit highlighting famous thrill-seekers; through May 2; 59800 S. U.S. Highway 97, Bend; highdesertmuseum.org or 541-382-4754.

Hood Avenue Art: Featuring work from gallery artists, open limited hours; visitors may be limited at any given time; 357 W. Hood Ave., Sisters; hoodavenueart.com or 541-719-1800

Jill Neal Gallery: Featuring works by Jill Haney-Neal, open by appointment; 220 S. Ash St., Suite 11, Sisters; jillnealgallery.com or 541-410-8880.

John Paul Designs: Featuring custom jewelry, open by appointment; 1006 NW Bond St., Bend; johnpauldesigns.com or 541-318-5645.

Kreitzer Art Gallery: Contemporary realism oil and watercolor figures, koi, landscapes, florals and fantasy; open noon-5 p.m. Friday through Sunday by appointment; 20214 Archie Briggs Road, Bend; kreitzerart.com or 805-234-2048

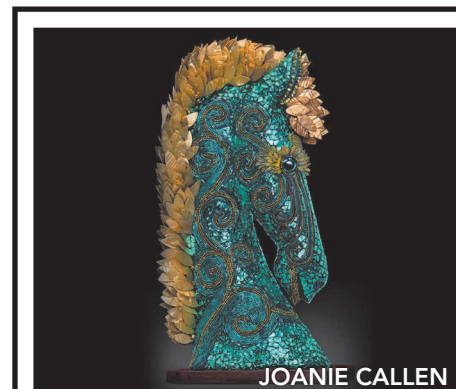
LTA Gallery: “Water & The Rock,” a solo exhibition of oil paintings by Darren Kling; 611 NE Jackpine Court, Suite 3, Redmond; lta-gallery.business.site.

Lubbesmeyer Fiber Studio: Featuring fiber art by Lori and Lisa Lubbesmeyer; 450 SW Powerhouse Drive, Suite 423, Bend; lubbesmeyerstudio.com.

Mockingbird Gallery: “Sharing Visions” features works from Mitch Baird, Perry Brown and Silas Thompson; through March; 869 NW Wall St., Bend; mockingbird-gallery.com or 541-388-2107.

The Oxford Hotel: “Wild Nature in the High Desert,” featuring works by Jean Requa Lubin; through March; 10 NW Minnesota Ave., Bend; 541-382-9398.

Patagonia@Bend: Featuring photography by Mike Putnam; 1000 NW Wall St., Suite 140; 541-382-6694.



JOANIE CALLEN

103 NW Oregon Ave. • Downtown Bend
541-306-3176 • redchairgallerybend.com

art notes

■ More news from Central Oregon's arts scene

Robinson named conductor of Bend Pops Orchestra

Bend Pops Orchestra has announced Bend conductor and musician Eddy Robinson as its new leader beginning with the 2021-2022 season.

Robinson works with students at Pilot Butte and Sky View middle schools, as well as Mountain View High School. He co-conducts the Central Oregon Youth Orchestra, has participated many school district events and festivals and teaches string students at Cascade School of Music. He also plays bass with the Central Oregon Symphony and has joined Bend Pops for several concerts on bass.

“Our announcement to our members about Eddy joining us was met with a lot of excitement. Many of our members know Eddy from music circles here in Central Oregon and are happily anticipating getting back to rehearsals under his lead,” said Lisa Hakesley, chair of the Bend Pops Orchestra Board of Directors.

Due to COVID-19 restrictions, the orchestra has been unable to rehearse or perform for the past year. If conditions allow for a fall 2021 startup, Robinson will assume leadership of the group at that time.

Musicians interested in joining Bend Pops Orchestra are invited to contact info@bendpops.org.

HDCM selling flower baskets for its Educational Outreach program

To help fund its Educational Outreach program, High Desert Chamber Music is offering hanging flower baskets. Orders for Willamette Valley-grown flowers, including petunias, million bells and ver-bena, will be taken into early May. The baskets will be delivered to the High Desert Chamber Music office in Downtown Bend in mid-May.

The nonprofit's mission is to bring world-class chamber music and musicians to Central Oregon. The goal of its Educational Outreach is to expose children to the highest levels of music performance and cultivate a lifelong appreciation and enjoyment of the performing arts.

Single baskets are priced at \$39 each. Baskets can be purchased at highdesertchambermusic.com under the “Support Us” tab.

— David Jasper, *The Bulletin*

Raven Makes Gallery: Native American and First Nations artwork and jewelry; 182 E. Hood Ave., Sisters; ravenmakesgallery.com or 541-719-1182.

Red Chair Gallery: The gallery will feature landscapes including pastels by Lise Hoffman-McCabe and watercolors by Jacqueline Newbold, as well as fused glass by Deb Borine and felted scarves and toppers by Tricia Blesmann; through March; 103 NW Oregon Ave., Bend; redchairgallerybend.com.

Rimrock Gallery: Featuring paintings and bronze sculpture by artists of the Northwest and beyond;

405A NW Third St., Prineville; rimrockgallery.com.

Sage Custom Framing and Gallery: “High Desert Visions” features a variety of works from local artists; through March 26; 834 NW Brooks St., Bend; sageframing-gallery.com or 541-382-5884.

Tumalo Art Co.: “A Still Moment” features works from gallery artists; through March; 450 SW Powerhouse Drive, Suite 407, Bend; tumaloartco.com.

The Wooden Jewel: Featuring works from local sculptors, jewelry makers and painters; 844 NW Bond St., Bend; thewoodenjewel.com.



“Great art picks up
where nature ends.”
- Marc Chagall



ANNE GIBSON Art + Design
ANNEGIBSONARTANDDESIGN.COM