

Buying a house isn't always a walk in the park. We just want it to feel like one.



All in, for you.™

RESIDENTIAL • NEW CONSTRUCTION • INVESTMENT • MULTI-FAMILY • BARE LAND • COMMERCIAL

OPEN HOUSE SATURDAY 10-2



19515 Dayton Road, Bend
Enjoy Tumalo living on this 9.64 irrigated acreage, 1840 sq. ft. home, shop, shared well.
BARBARA MYERS, PRINCIPAL BROKER
541.480.7183 / barb@barbmyers.com

OPEN HOUSE SATURDAY 10-2



19575 Dayton Road, Bend
1972 manufactured home, 1744 sq. ft. 2 bed, 2 bath, 4.44 acres with irrigation, and a shop.
BARBARA MYERS, PRINCIPAL BROKER
541.480.7183 / barb@barbmyers.com

2 TAX LOTS



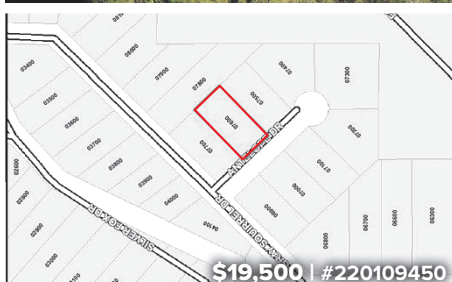
401-419 W Antler Avenue, Redmond
In cities urban renewal area, hwy 97 access! Residential use, commercial zoning
SIERRA WILLETT, BROKER
541-420-1233 / sierrawillett@windermere.com

2 LOTS



NW 4th Street, Redmond
(2) 0.14 acre lots in downtown Redmond! C2 zoned. One block from Antler, hwy 97 access!
SIERRA WILLETT, BROKER
541-420-1233 / sierrawillett@windermere.com

RECREATIONAL LOT!



16434 Antelope Drive, Bend
.47 acre lot. Multiple access points. Recreational use only! Bring your camper or tent.
BEA LEACH HATLER/JEANETTE BRUNOT
541-788-2274 / 541-771-1383 / Beal@windermere.com

EAGLE CREST FRACTIONAL



6990 Robin Court, Redmond
Stay-cation, vacation, you choose. Eagle Crest Fractional, 10 weeks per year!
BEA LEACH HATLER/JEANETTE BRUNOT
541-788-2274 / 541-771-1383 / Beal@windermere.com

MOUNTAIN VIEWS



Lot 39 Larkspur Drive, Madras
.36 acre gently sloping lot, Yarrow addition in east hills, near COCC and Aquatic Center.
JAN LAUGHLIN, BROKER
541-350-6049 / BrokerJanLaughlin@gmail.com

VIEW HOMESITE ON AUBREY BUTTE



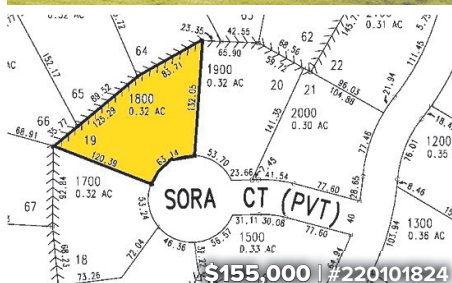
Lot 28, Denali Drive, Bend
33 acres view lot. Awbrey Park. Grade/survey/elevation mapping available. Build your dream!
GAIL ROGERS, BROKER
541-604-1649 / Gail@CentralOregonLife.com

NEW LISTING



327 NW Elm Avenue, Redmond
2 bed, 1 bath, 940 sq. ft. Move in ready! Fresh interior paint.
KRISTIN PROSSER, BROKER
541-420-4668 / kristinre@kristinprosser.com

PENDING



8211 Sora Court, Redmond
Building sites at Eagle Crest are going fast! Don't let this one pass you by!
DIANA BARKER, BROKER
541-480-7777 / askdianabarker@gmail.com

55+ COMMUNITY



2436 Northwest Way, Redmond
Central Oregon's premier age-restricted/gated community. Visit www.drycanyonvillage.com
JOHN ROPP/CHRIS QUINN, BROKERS
541-771-6564 / 541-228-4767

PENDING



2646 NW 25th Street, Redmond
Dry Canyon Village, the Alder floor plan. 1628 sq. ft., 3 bed, 2 bath, single-level.
JOHN ROPP/CHRIS QUINN, BROKERS
541-771-6564 / 541-228-4767

PENDING



2254 NW West Hills Avenue, Bend
Large .30 corner lot. 3 bed, 2.5 bath with 1 bed Apt. including separate entrance and parking!
ANGELA BOOTHROYD, BROKER
541-410-2572 / aboothroyd@windermere.com

PENDING



4752 Umatilla Avenue, Redmond
Single level, open floor plan with 5 bed. Great location on 0.21 acres.
KARIANN BOX/ AUDREY COOK, BROKERS
541-350-3055 / 541-480-9883

NEW LISTING



4780 NE 21st Street, Redmond
Charming farmhouse on 4.8 acres with private bonus/guest quarters. Multiple outbuildings!
KARIANN BOX/ AUDREY COOK, BROKERS
541-350-3055 / 541-480-9883

COMING SOON



62691 Hawkview Road, Bend
Craftsman style 4 bed 2.5 bath, 2077 sq. ft. On .09 acre. Close to parks, schools and more!
JAMIE GARZA, BROKER
541-639-2081 / Levisongroupinfo@gmail.com



WINDERMERE CENTRAL OREGON REAL ESTATE

BEND
807 SW Industrial Way
541-388-0404

REDMOND
821 SW 6th Street
538 SW Highland Ave.
541-923-HOME

COMMERCIAL
538 SW Highland Ave.
541-410-3484

MADRAS
161 SE 5th Street
541-475-7001

SUNRIVER
57100 Beaver Drive
Bldg. 22 Suite 220
541-323-5888

