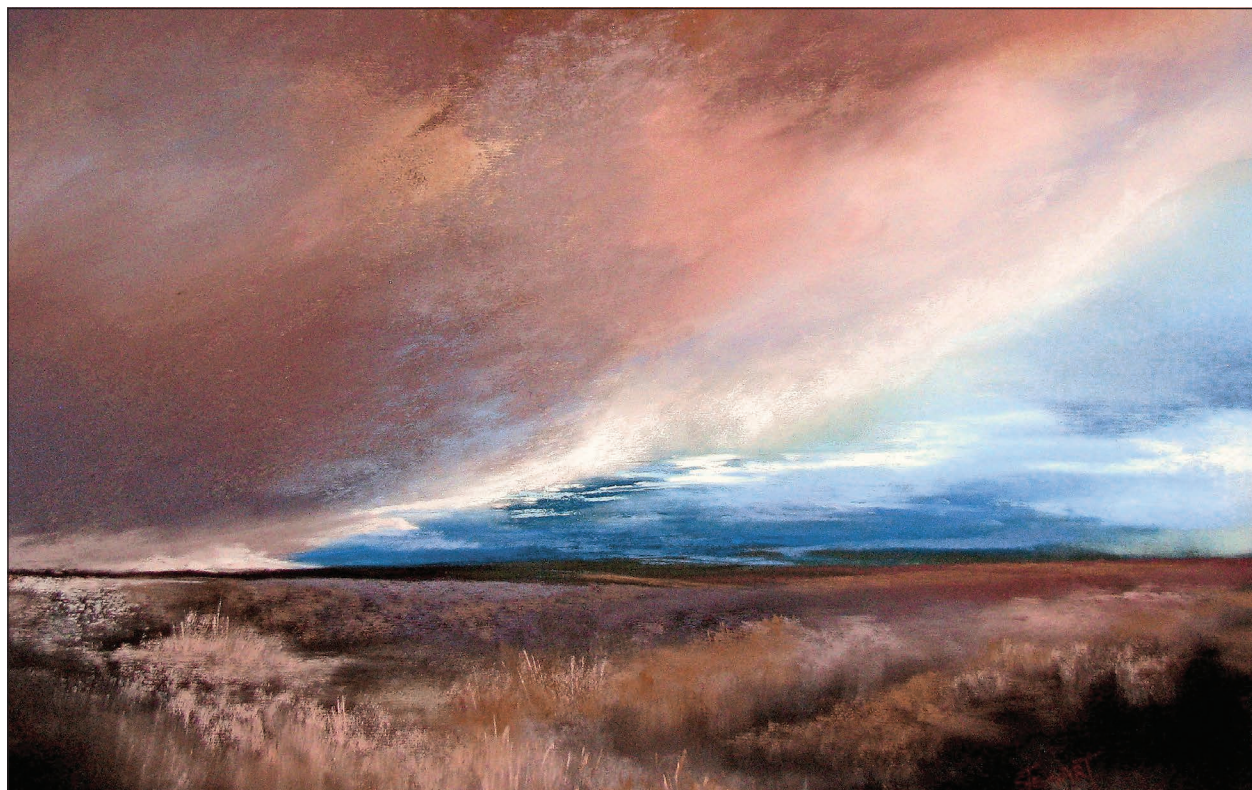


art exhibits



Submitted photos

"High Desert Drama" by Marty Stewart is on display through March 26 at Sage Custom Framing and Gallery in Bend.

Art Adventure Gallery: Featuring works from local gallery artists; works available to view online and in person by appointment only; 185 SE Fifth St., Madras; artadventuregallery.com or 541-475-7701.

Artists' Gallery Sunriver: Featuring the works of 30 local artists; 57100 Beaver Drive, Building 19, Sunriver; artistsgallerysunriver.com. Box Factory Breezeway: Featuring works from Zach Filkins, proceeds from sales will go towards The Giving Plate; through March 26; 550 SW Industrial Way, Bend; boxfactorybend.com or 541-330-0025.

Canyon Creek Pottery: Featuring pottery by Kenneth Merrill; 310 N. Cedar St., Sisters; canyoncreekpotteryllc.com or 541-549-0366.

High Desert Museum: "Daredevils," an exhibit highlighting famous thrill-seekers; through March 7; 59800 S. U.S. Highway 97, Bend; highdesertmuseum.org or 541-382-4754.

Hood Avenue Art: Featuring work from gallery artists, open limited hours; visitors may be limited at any given time; 357 W. Hood Ave., Sisters; hoodavenueart.com or 541-719-1800

Jill Neal Gallery: Featuring works by Jill Haney-Neal, open by appointment; 220 S. Ash St., Suite 11, Sisters; jillnealgallery.com or 541-410-8880.

John Paul Designs: Featuring custom jewelry, open by appointment; 1006 NW Bond St., Bend; johnpauldesigns.com or 541-318-5645.

Karen Bandy Design Jeweler: Featuring jewelry and paintings by Karen Bandy; 25 NW Minnesota Ave., Suite 5, Bend; karenbandy.com or 541-388-0155.

LTA Gallery: "Water & The Rock," a solo exhibition of oil paintings by Darren Kling; 611 NE Jackpine

Court, Suite 3, Redmond; lta-gallery.business.site or 541-316-0362.

Lubbesmeyer Fiber Studio: Featuring fiber art by Lori and Lisa Lubbesmeyer; 450 SW Powerhouse Drive, Suite 423, Bend; lubbesmeyerstudio.com or 541-330-0840

Mockingbird Gallery: Featuring new works from gallery artists, opens Friday; through February; 869 NW Wall St., Bend; mockingbird-gallery.com or 541-388-2107.

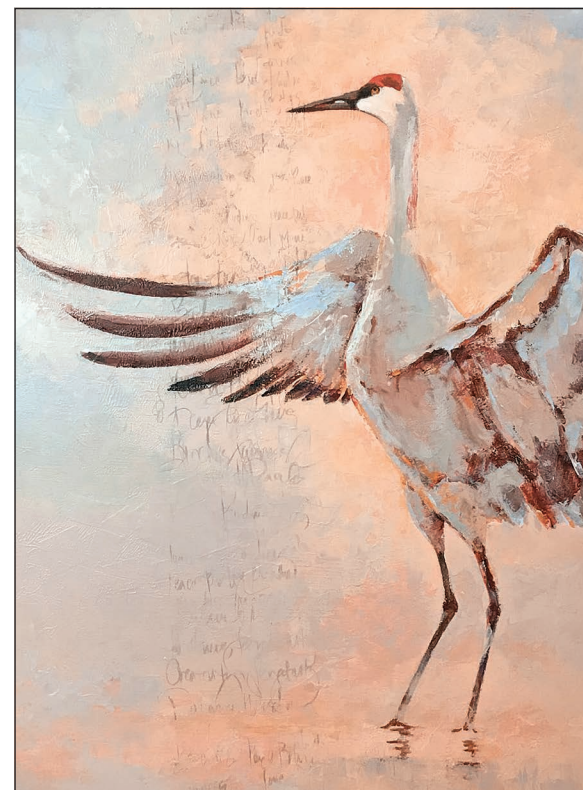
The Oxford Hotel: Featuring watercolors by Jacqueline Newbold; through February; 10 NW Minnesota Ave., Bend; 541-382-9398

Patagonia@Bend: Featuring photography by Mike Putnam; 1000 NW Wall St., Suite 140;

541-382-6694. Peterson Contemporary Art: The "Winter Exhibition" features works from Robert Schlegel, Scott Switzer and Stan Peterson; through February; 206 NW Oregon Ave., Suite 1, Bend; petersonroth.com or 541-633-7148.

Raven Makes Gallery: Native American and First Nations artwork and jewelry; 182 E. Hood Ave., Sisters; ravenmakesgallery.com or 541-719-1182.

Red Chair Gallery: The gallery will feature landscapes including pastels by Lise Hoffman-McCabe and watercolors by Jacqueline Newbold, as well as pottery by Helen Bommarito, Native American inspired jewelry by Helen Sanderson and woven scarves and cowls by Stephanie Stanley; through February; 103 NW Oregon Ave., Bend; redchairgallerybend.com.




"Message From the Crane" by Sarah B. Hansen is on display through February at Tumalo Art Co. in Bend.

Rimrock Gallery: Featuring paintings and bronze sculpture by artists of the Northwest and beyond; 405A NW Third St., Prineville; rimrockgallery.com or 541-903-5565

Sage Custom Framing and Gallery: "High Desert Visions" features a variety of works from local artists; through March 26; 834 NW Brooks St., Bend; sageframing-gallery.com or 541-382-5884. Tumalo Art Co.: "Imagine" features works from gallery artists and what they interpret with the word "imagine"; through February; 450 SW Powerhouse Drive, Suite 407, Bend; tumaloartco.com.


The Wooden Jewel: Featuring works from local sculptors, jewelry makers and painters; 844 NW Bond St., Bend; thewoodenjewel.com.



Red Chair gallery

"Every artist was at first an amateur."
-Ralph Waldo Emerson

103 NW Oregon Ave. • Downtown Bend
541-306-3176 • redchairgallerybend.com



ANNE GIBSON Art + Design
ANNEGIBSONARTANDDESIGN.COM