

# Photographer catches drama of early morning disaster



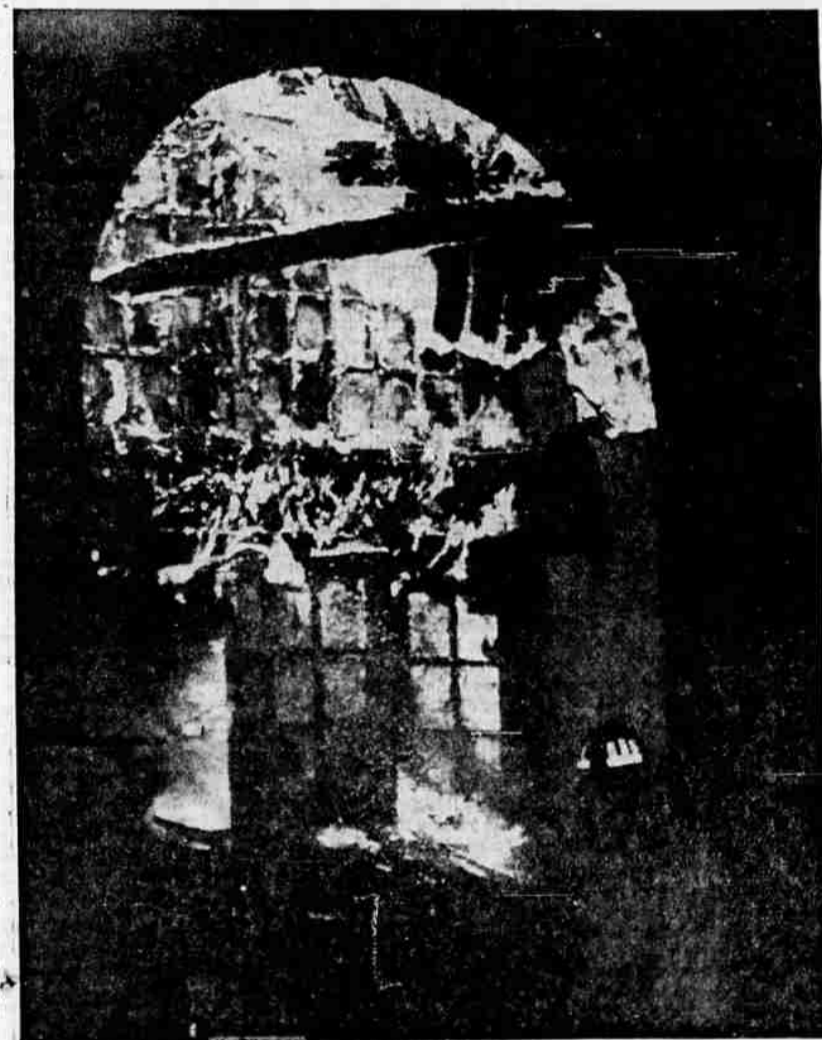
**FLAMES COLOR SKY**—Fire that razed Allen School was a spectacular display in the early morning hours today. Roof being sprayed with water crashed in, after effort to chop outlets failed. Rockwork at building center, left, stands now in isolation, like Roman ruin. Building was total loss, and remains continued to smoulder throughout the day.



**DIRECTS OPERATIONS** — Fire Chief Vernon Carlon, with walkie-talkie, coordinates fire fighting operation, as hope fades for saving major East Side Bend grade school.



**'BUT NOT MUCH . . .'**—Principal Ford Hunnell, left, and Superintendent R. E. Jewell, manage wan smiles at suggestion that "it could be worse." Insurance minimizes tragedy.



**WINDOW OF FLAME**—Front entrance of Allen School reveals inferno behind rock entryway. Fire started in furnace room behind building, and spread quickly to gymnasium attic and both directions to ends of frame structure. Foreground: George Churchill.



**WATCH DESTRUCTION**—Firemen, silhouetted against fire-brightened sky, direct hoses on raging cauldron, as water forms lake on school ground. Fire was discovered this morning before 3 o'clock, and was well advanced when fire-fighting operations began moments after its discovery. All volunteers and regular firemen were on the job; crowds gathered as news of the tragedy spread. Workmen passing by to early jobs called homes.



**GIVE HELPING HAND** — Onlookers Bob Newman and Jim Parker assist Fireman Vance Barber in holding hose, heading call for aid. Torrents of water belched out fiercely, as firemen went into action. Fire was one of most disastrous in history of City of Bend.



**ROARING FURNACE**—Flames belch from school's South entrance, as walls on all sides of building are consumed simultaneously. Hundreds saw school reduced to ashes, watching firemen's valiant efforts which were useless except to keep fire from spreading to other buildings. Fourteen-room school was a major institution in Bend school system; loss is around half million dollars. Temporary housing of students is being planned.