

# SCREEN ACTORS HERE FOR WORK

OUT DOOR SCENES ARE  
BEING FILMED

Fifteen of Company Now Here—  
Others Coming Next Week—  
Pictures Will Be Taken in  
Town and Country.

With the arrival Friday of 15 members of the American Lifeograph Company, of Portland, work was begun on the filming of the out door scenes of the company's new screen play, "The Clan of Timber Mountain," a seven reel feature dealing with the labor situation in the saw mills and logging camps of the United States.

In the course of the work scenes are to be taken at the logging camps, in the saw mills and at different points around the town, giving an opportunity to the people of this section to observe the workings of one of the most interesting industries of the country. One of the spectacular sights will be the taking of the night scenes by artificial light, a complete lighting system for the purpose being included in the company's equipment.

Another scene necessitates the burning of a small house which will be erected for the purpose just outside the city limits. The house will be fired and the scene "shot" early next week. A mob scene in which about 200 people will be used will give a number of Bend folks a chance to break into the screen game.

The members of the company who arrived here Friday included Louis Moomaw, director, Miss Carol Holloway, leading lady, Jean Hersholt, character lead, Bert Sproutte, heavy, Clyde Cook, cameraman, G. W. Hays, electrician. Others were Dick Horner, H. A. Wagner, Don Prior, L. B. Phillips, Walter MacMonies, Jr., Dick Oliphant, Jan Horner, and B. C. Turner. Harold Grady, business manager for the company, has been in Bend the past week looking up locations and making arrangements for the work.

Other members of the company who will arrive next week are Jack Mulhall, Miss Mabel Baker, a daughter of Mayor Baker, of Portland; Ralph Dudley, Broderick O'Flinn, and William Dills. Jack Mulhall, who will play the lead in "The Clan of Timber Mountain," appeared first in pictures with the old Biograph company under the direction of G. W. Griffith, later signing a two year contract with the Universal company.

Basing his opinion on observations already made Louis Moomaw, director of the Lifeograph Company, says that he believes the soft clear light of Central Oregon will prove extremely desirable in the photography of the moies.

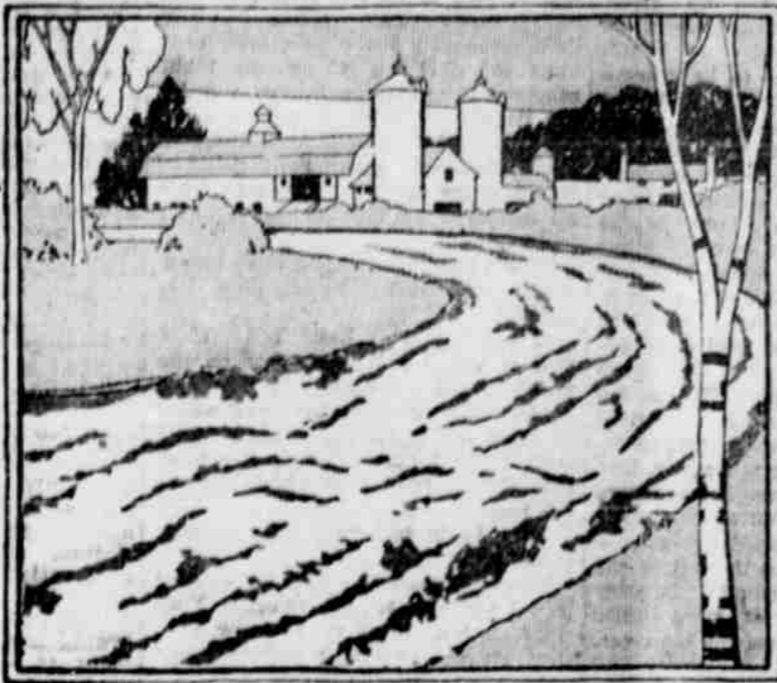
# TRAVEL HEAVY; HOTELS FULL

ACCOMMODATIONS IN BEND INSUFFICIENT TO CARE FOR TRANSIENT TRADE—MANY ARRIVALS GO WANTING.

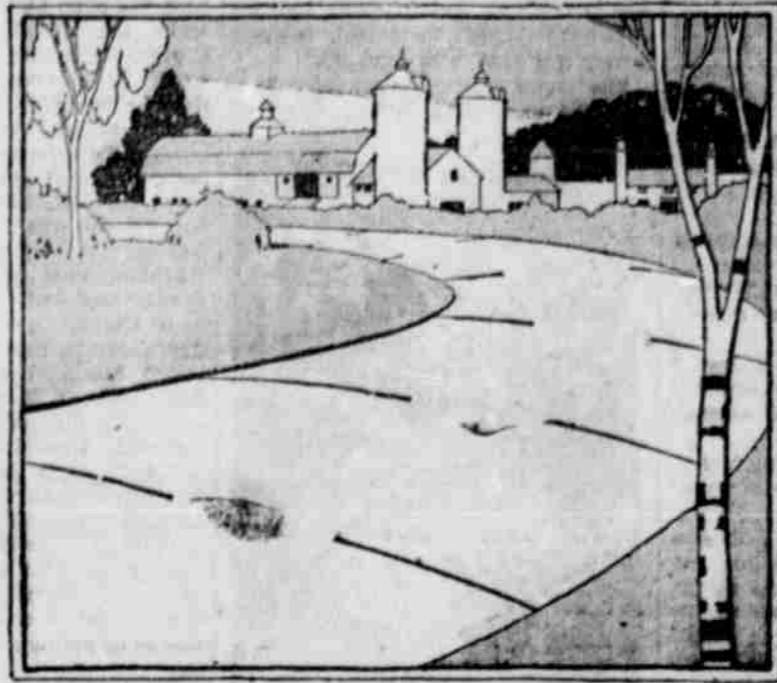
Either Bend is a good transient town with a large number of arrivals and departures every day to and from hotels, or there are not sufficient "hotel" accommodations. This fact has been often manifested in the last few weeks in the city not only during the times when there is something special going on in the city, but also during normal days. For the last week there have been times when it has been impossible for arrivals in the city to obtain hotel accommodations.

Frequently of late the management of the Pilot Butte Inn has been unable to take care of its transient patrons. A similar condition is reported by G. P. Smith, who recently purchased the Wright Hotel. Mr. Smith stated on Saturday he is making an effort to provide sleeping rooms for the heavy patronage. The annex to the Pilot Butte Inn is almost always full with a waiting list, and it is frequently necessary to refuse accommodations to regular traveling patrons.

Sell your poultry through Bulletin classified ads.



As It Is



As It Seems

## The Road—In New Overland 4 on Three-Point Cantilever Springs

YOU expect a bad road to ride as it looks. It did, until the introduction of the Overland 4 Springbase.

Overland 4 does not change the road, but it does change the manner in which you can ride on it. It gives you comfort instead of dis-comfort. It gives you a smooth, sailing sensation instead of bouncing and swaying.

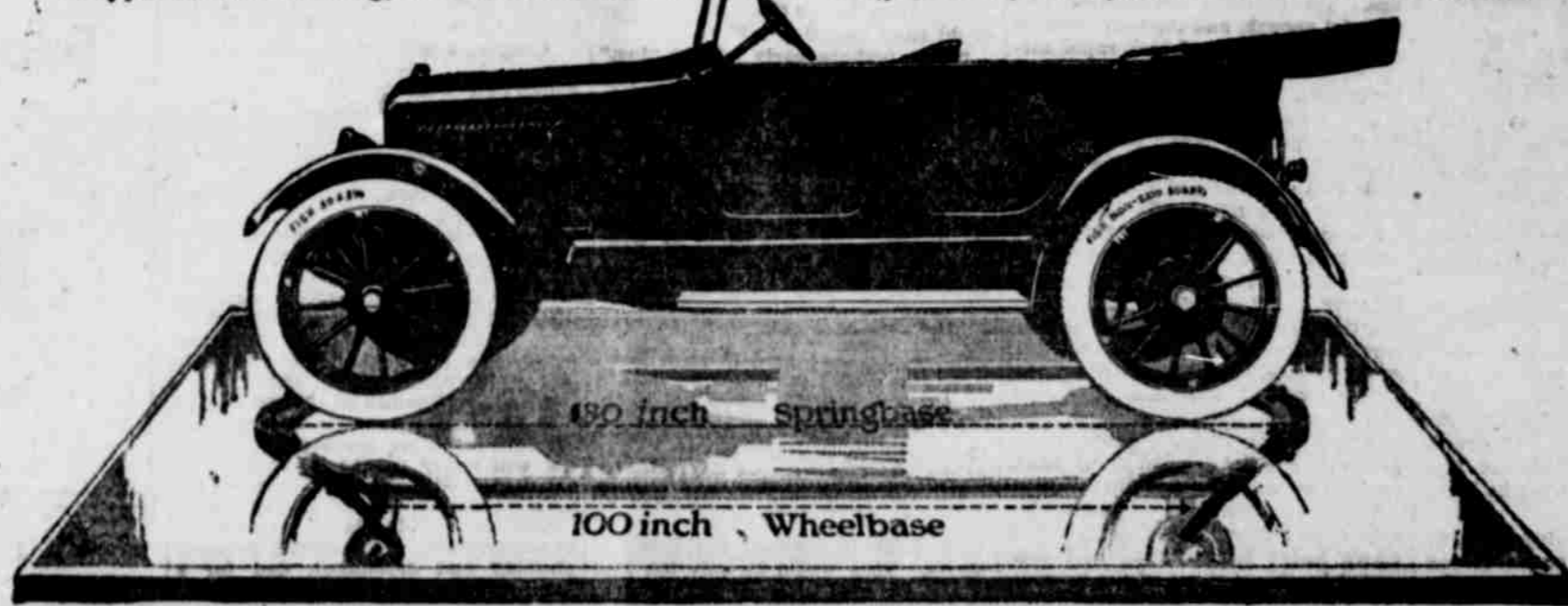
The Diagonal attachment of Three-Point Cantilever Springs at the ends of a 130-inch Springbase gives long wheelbase road steadiness. Yet Overland 4 retains all the advantages—lightness, economy, and ease of handling, of 100-inch wheelbase.

This means an altogether new standard of riding comfort, a noteworthy reduction in the wear and tear which lessens the efficiency of a car. The new springs give longer life to every part and thus minimize upkeep and replacement costs.

Tires wear longer because cushioned against hammering blows. Light weight means marked economy in gas, oil and running expense.

Overland 4's equipment is complete from Auto-Lite Starting and Lighting to Demountable Rims.

Come in and see this remarkable car. Ask for booklet. Overland 4 Touring, \$845; Roadster, \$845; Coupe, \$1325; Sedan, \$1375. Prices f. o. b. Toledo.



PIONEER GARAGE CO., Bend, Oregon

## TOTAL SHORT OF FUND EXPECTED

SLIGHTLY OVER 1000 MEMBERS  
SECURED TO DATE—MILL EMPLOYEES WILL ADD 500—  
REDMOND RESULTS POOR.

Although the Red Cross membership drive was officially over on November 11 subscriptions are still being received in the hope of bringing the total membership up to the point expected by the national organization.

To date the cash turned in for memberships amounts to something over \$1,000 and the receipts from local mill companies representing memberships taken by employees are expected to bring the total to over \$1,500. Very poor results in out of town districts, however, have so far served to keep the figures far below the amounts which it was believed would be received when the campaign opened. In Redmond, for example, only 56 members were secured, or only 20 more than at La Pine

while as yet no report has been obtainable from Jefferson county.

In both Jefferson and the Redmond section the drive was in charge of the American Legion. Whether its apparent failure is due to inability to perfect organization or to local apathy is not known but an effort will be made to obtain results even though they are belated.

Volunteer workers in Bend who have made especial exertions on behalf of the drive include Mrs. L. B. Ward, Mrs. E. P. Mahaffey, Miss Alice Spalding, Mrs. Horace Richards, Mrs. H. H. Lamping, Mrs. C. W. Hayes, Mrs. W. D. Barnes, and the American Legion. Julius Pederson in the Grange district and C. H. Clow assisted by Mrs. John Dubuis, at La Pine have covered their territory thoroughly.

## JURY FINDS SHEPHERD NOT GUILTY

After a trial lasting a day and a half the case of State of Oregon vs. A. A. Shepherd, charged with an offense against his minor daughter, went to the jury in the circuit court on Saturday. The jury's verdict, given after a short period of delib-

eration, was in favor of the defendant.

Following the Shepherd case the court took up the criminal case against P. C. Hardy who is charged with the larceny of a wagon.

## TRUCKS GO TO BURNS FOR HIGHWAY WORK

Four Diamond "T" trucks were unloaded at Bend on Saturday and will be driven to Burns, where they will be used to aid in the hauling of

cinders for the Burns-Crane road now under construction.

Two other trucks left Bend Wednesday for Burns, and four more are expected to arrive this week. The Pacific Bridge Constructing Co., of Portland has the contract for the construction of the highway, but the hauling of gravel and cinders will be done under sub-contract by The R. A. Allen Hauling Co., also of Portland. The trucks that left Bend Saturday are individually owned and the hauling will be done by the yard.

Super Realism.  
Employer (to clerk)—"If that bore, Smithers, comes in, tell him I'm out—and don't be working or he'll know you're lying."

Cut This Out—It Is Worth Money.  
Don't miss this. Cut out this slip enclose with 5c to Foley & Co., 2835 Sheffield Ave., Chicago, Ill., writing your name and address clearly. You will receive in return a trial package containing Foley's Honey and Tar Compound, for coughs, colds and croup, Foley's Kidney Pills and Foley's Cathartic Tablets. Sold Everywhere—adv.

## BRICK vs. OTHER BUILDINGS

BRICK BUILDINGS IN BEND---  
VALUE ABOUT  
\$500,000  
FIRE LOSS IN FIVE YEARS  
NONE

OTHER BUILDINGS---  
VALUE ABOUT  
\$2,000,000  
FIRE LOSS IN FIVE YEARS OVER  
\$100,000

Build With BRICK! BEND BRICK & LUMBER CO.