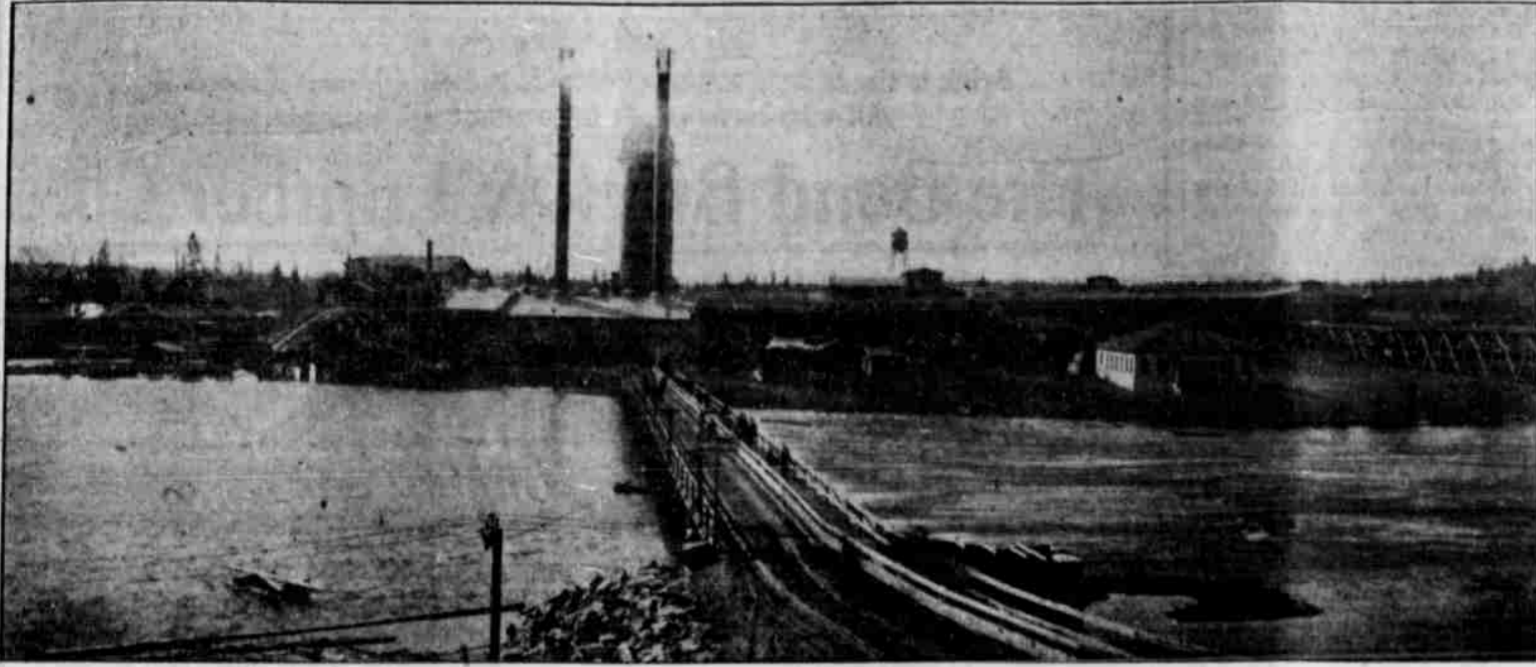
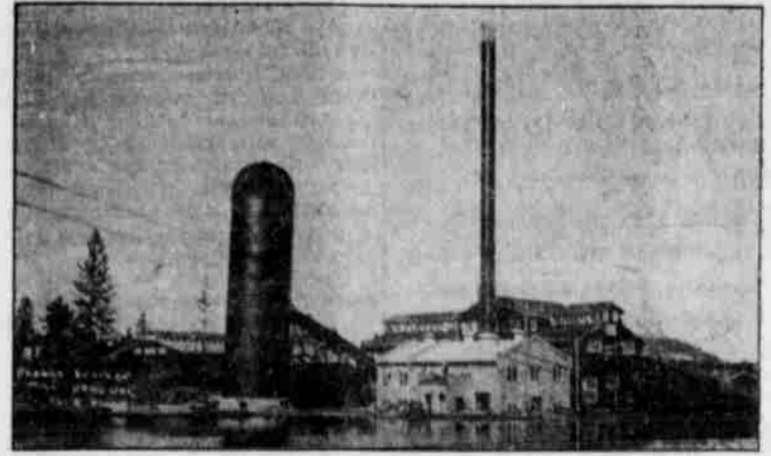


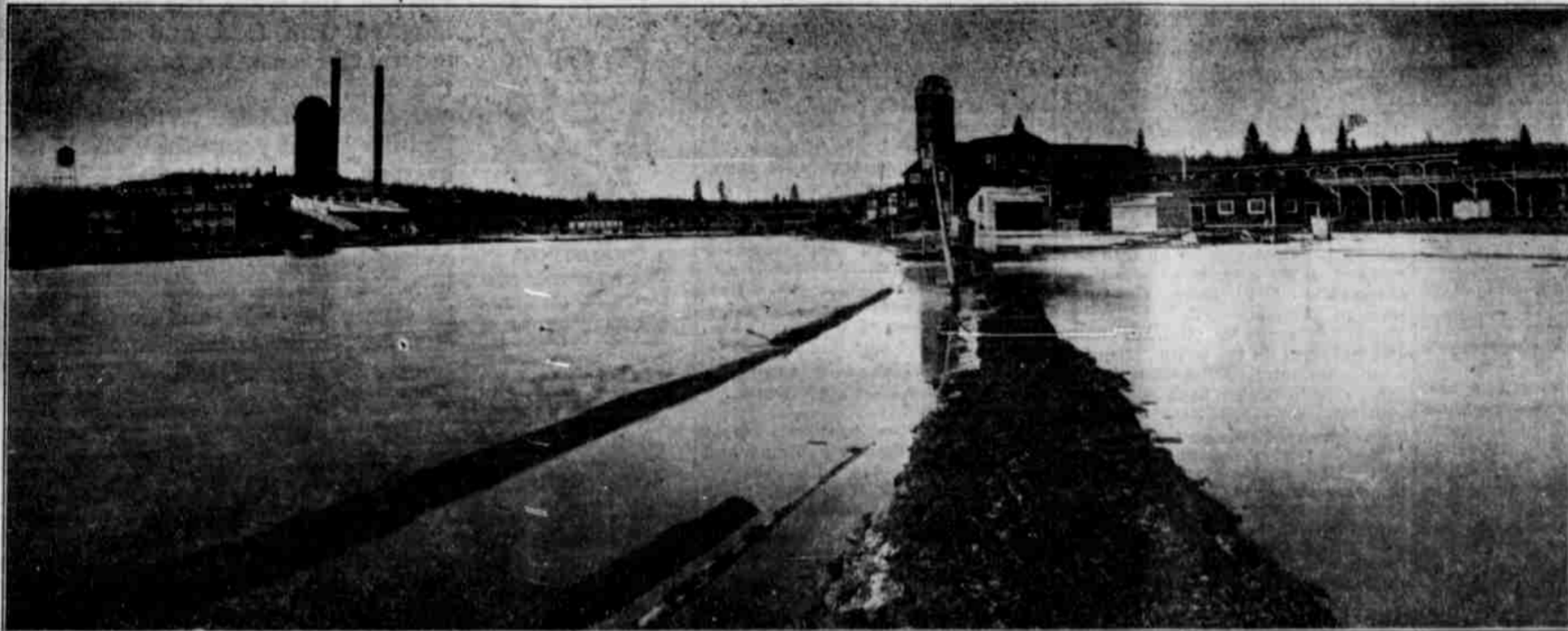
# WESTERN PINE MANUFACTURERS PAGE



THE SHEVLIN-HIXON PLANT.



THE BROOKS-SCANLON MILL.



THE LOGGING POND AND THE TWO SAW MILLS

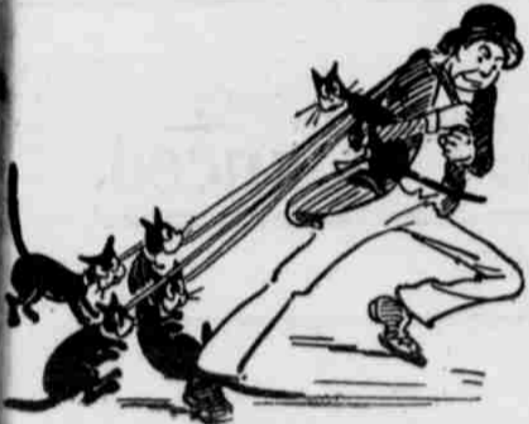
**DIMENSIONS SHEVLIN-HIXON BUILDINGS.**

Office	74x54
Pump House	22x24
Saw Mill	54x180
Engine Room	62x55
Boiler Room	111x65
Sorting Shed	216x54
Stacker	188x62
Dry Kiln	222x106
Unstacker	165x62
Planing Mill	112x100
Sash Factory	216x270
Box Factory	216x150
Dry Shed	124x632
Dry Shed	124x500
Barn	80x36
Machine Shop	112x36
Warehouse	40x32
Roundhouse	60x90

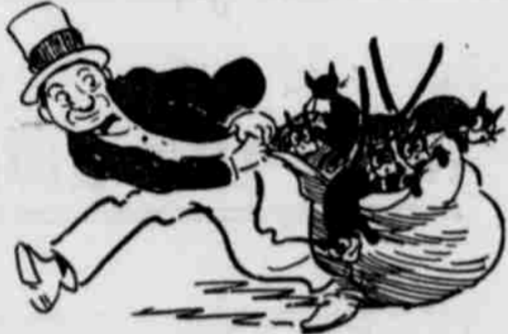
**DIMENSIONS BROOKS-SCANLON BUILDINGS.**

Saw Mill	54x150
Lath Mill	52x80
Sorting Shed	32x240
Dressed Lumber Shed	36x240
Planer Shed	80x120
Box Factory	80x120
Box Factory Store House	80x100
Power Plant	49x34
Round House	36x112
Barn	34x107

## HOO-HOO SECTION



Supreme Senior Hoo-Hoo  
W. P. LOCKWOOD.  
With Seattle Kittens.



SNARK THOMAS COTTER,  
of Eureka, Cal.,  
From the looks of the sack he's a  
Catter, as well.



JOHN GRYTHMAN,  
Snark of Eastern Washington.  
Canned Cats for the Nation.



R. D. INMAN,  
Snark of Western Oregon.  
Cats-as-Cats-Can

This is Cooper.  
Here to Whoop 'ee  
Up at Bend  
From start to End.



TOM (Cat) McCANN  
The Shevlin Man.



J. P. KEYES, Small but Wise.



J. P. McGOLDRICH is always there  
With something to talk of  
And something to wear.



V. A. FORBES.  
Must I do that  
To be a Cat?

Hoo-Hoo Special Leaving Spokane Yesterday. Prosperous Lumbermen Hurrying off to Bend.

Names from left to right: T. J. Humbird, B. H. Hornby, A. W. Laird, J. P. Goldrich, Geo. Stoddard, E. F. Sayre, E. H. Van Ostrand, G. F. Hagerbuch, W. R. Ballard.