

# THE BEND BULLETIN.

## SUMMY AND CITY IN AGREEMENT

### STREET EXTENSION TO GO FORWARD

#### Earth For Fill to New Bridge to Come From O'Kane Lot—Building to Proceed—Council Hears Committee Reports; Allows Bills

A settlement of the differences existing between the city and E. H. Summy of Seattle, in connection with the extension of Greenwood avenue to the new steel bridge, was reached at the council meeting last night and it will now be possible for the work to proceed. The adjustment of the matter makes it possible for the Messrs. Brooks & Sullivan, of the Pilot Butte Hotel, to proceed with their plans for the new hotel.

Representing Mr. Summy, J. M. Lawrence, of Portland, at last night's meeting, asked that the matter be referred again to the viewers in order that matters which they had presumably failed to take into consideration be presented to them. Because this would cause further delays the request was not received favorably and after considerable discussion Mr. Lawrence stated that he was ready to settle the matter on a basis of an even exchange which was satisfactory to the city. Final proceedings will be taken this afternoon at four o'clock.

In connection with the street extension an agreement was made with Hugh O'Kane to share the cost of the removal of earth from his building site at a price not to exceed 20 cents a yard, the earth to be used for the fill leading to the new bridge. With this agreement made Mr. O'Kane announced that he was ready to proceed with the work of excavation.

**Committees Report.**  
Among the reports from committees was one from the Civic Improvement body asking that a clean-up day be appointed and that thereafter a garbage collector be employed by the city to make regular collections. No action was taken on this request.

For the streets committee Chairman Steidl reported on the work which he had done in the past month on Wall, Ohio and other streets and \$175 was voted for additional repairs on Greenwood avenue between Bond street and the viaduct. In connection with his report Mr. Steidl stated that the city lateral had not been abandoned by reason of the work which had been done, but that it was open to the city at any time within two years to put in culverts crossing the streets in connection with the lateral, thereby retaining its rights in it.

Funds on hand amount to \$750.91 in the general fund, and \$674.31 in the sewer fund.

#### Bills Ordered Paid.

A claim of the Cameron Septic Tank Co., for royalties on its patent used in the city's sewage disposal system amounting to \$170.30 was allowed, and bills were ordered paid in registered warrants as follows:

Election board	\$18.00
Vasil Zaklan	4.50
Dan Yoeblick	11.25
Vasil Pasrich	3.37
Tyla Zaklan	2.25
W. F. Ross	7.20
J. R. Cross	7.20
D. M. Cloud	7.50
J. Furnich	4.50
E. B. Houston	3.00
Ted Hoke	1.00
Grace Ward	5.00
Earl Rogers	1.20
H. H. De Armond	20.00
J. W. Hunter	50.00
G. Borgen	3.00
S. E. Roberts	100.00
Joe Rock	25.25
Bend Hardware Co.	16.29
L. A. W. Nixon	100.00
J. P. Johnson	25.00
Bend Bulletin	80.75
GEO. D. BAKER	5.00
M. E. Coleman	27.00
C. D. Brown	82.50
Owl Pharmacy	.55
Lasco Whitson	41.70
B. W. L. & P. Co.	255.72
Dement & Co.	.25
Jas. Phillin	3.37
Joe Rock	20.00
Joe Rock	61.25
Vuy Cole	7.87
Mike Yellish	5.63
Lester Gist	11.25
R. B. Gould	7.19
R. B. Gould	17.50
W. B. Crawford	21.00
G. Borgen and others	20.90
R. E. Lowell	31.30
H. C. Ellis	20.00
J. A. Eastes	20.00

## W. G. HASTINGS IS NEW DESCHUTES FOREST HEAD

Successor to M. L. Merritt Has Had Wide Experience in Forestry Work—Stationed at Portland.

W. G. Hastings, formerly associated with the Columbia National Forest in Oregon, with headquarters in Portland, has been appointed to succeed M. L. Merritt, as supervisor of the Deschutes National Forest. Mr. Hastings arrived in Bend on Friday morning and assumed his new duties at once.

Having done considerable reconnaissance work on the Deschutes forest during the year of 1912-13, Mr. Hastings is familiar with the general conditions upon the forest. Just as soon as he has familiarized himself with conditions in the office Mr. Hastings will make an extended trip over the most important parts of the forest to become acquainted with the features and the forest personnel.

Prior to his appointment Supervisor Hastings has done considerable work on the Umpqua, Whitman, Deschutes and Columbia National Forests. He is a graduate of the University of Michigan school of forestry and has been in the service since 1911.

## HIGH SCHOOL GRADUATES PREPARE FOR COMMENCEMENT

### Exercises to Be More Elaborate Than Before—Twelve Students Will Be Graduated in May.

Commencement week of the Bend high school will this year be a more elaborate affair than it has been in the past. An outline for the program for the week of May 21 was made by the class and high school faculty last week.

Rev. H. C. Hartman, of the Presbyterian church, has been chosen to deliver the baccalaureate sermon on Sunday, May 21. The class play, "A Case of Suspicion" will be given on Monday evening, May 22. A definite decision relative to the dates of the class day exercises and the senior class-faculty reception have not been made. One of these will occur on either Tuesday or Wednesday evening of Commencement week. The Commencement speaker has not yet been chosen, but the address will be given to the outgoing class on the evening of May 25.

The 1916 class of the high school consists of 12 graduates, the largest in the school's history. The members of the class are: Susie Kelly, Leona Springer, Floyd Reynolds, Marie Fox, Myrtle Pugsley, Margaret Thompson, John Steidl, Frances Steidl, Bonita Hess, Howard Young, Loyd Gorton and Lottie Gorton.

At a meeting held last week the participants in the Class Day exercises were chosen. They are: Valetorian, Susie Kelly; Salutatorian, Leona Springer; Orator Floyd Reynolds; Prophet, Marie Fox; Adviser, Myrtle Pugsley; Grumbler, John Steidl; Author of the Will, Frances Steidl; Historian, Bonita Hess and Librarian, Howard Young.

## TO GIVE ENTERTAINMENT

### School Children Will Perform Friday at Bend Theatre.

The grade school teachers and their pupils, co-operating with the Library Club, will give an entertainment on Friday in the Bend Theatre. There will be a matinee performance at 5 o'clock and two performances in the evening, the first at 7:30 and the second at 8:45 o'clock.

**MANY PERMITS ISSUED.**  
Sixty-three liquor permits were issued during the month of February according to J. H. Corbett. This shows a big increase over the month of January.

**FINANCIAL REPORT GIVEN.**  
According to the financial statement rendered by City Treasurer Coleman there are now outstanding warrants in the following amounts:

October	\$2,089.49
November	272.34
December	915.34
January	641.56
February	727.73
Total	\$4,654.46

## O'KANE TO BUILD; LANG CO BUY HERE

### MODERN TWO STORY BRICK BLOCK, COSTING APPROXIMATELY \$30,000, TO RISE ON OLD BEND HOTEL SITE--- PORTLAND WHOLESALE GROCERY HOUSE TO ESTABLISH DISTRIBUTING DEPOT IN BEND

The first of the brick business blocks to be erected in Bend this spring will soon be under construction, according to an announcement made on Monday. This will be the O'Kane building on the corner of Oregon and Bond streets, and will be built by Hugh O'Kane, owner of the property and formerly proprietor of the Bend Hotel.

Mr. O'Kane's lot is 100x140 feet in size, and, except for necessary area ways in the rear, will be completely covered by the new building, which will cost close to \$30,000. So far as possible all material used in the construction of the building will be local products and only local labor will be employed. Brick to the number of 300,000 have already been contracted for with the Bend Brick & Lumber Company.

The building, which will be two stories in height, will have its main frontage on Oregon street. The plans, according to Mr. O'Kane, are drawn to provide six stores on Oregon street side with one large store having frontage on both streets and a corner entrance. The remainder of the Bond street front will be arranged for a theatre. On the second floor will be offices, 25 or 28 in number. The main entrance to the second floor will be on Oregon street. The building will be heated from a basement boiler room.

Applications for all the store rooms have already been made. Plans for the building have been drawn by Beemer Brothers, of Seattle and construction will be in their charge. Other buildings which this firm has built here are the First National Bank building, the Sather building and the Deschutes Investment Co. building at the corner of Oregon and Wall streets.

The site is the one formerly occupied by the Bend hotel, a local landmark for many years, until its destruction by fire last fall.

#### GRIFIN TRUSTEE CHOSEN.

Barge E. Leonard, a Portland attorney, was chosen trustee in bankruptcy of the estate of E. A. Griffin, at the meeting of the creditors held here on Monday. According to the schedules filed by Mr. Griffin, who filed a voluntary petition, the assets of the estate amount to about \$66,000 and the liabilities to about \$13,000.

#### TEACHERS ARE RE-ENGAGED.

All the teachers in the Bend public schools were re-elected for the coming year at a meeting of the school board held last night. Slight increases in salary were granted to those oldest in service and the salary of Superintendent Hopkins was raised to \$1800. Other business transacted by the board was of a routine nature.

LANG & Co., of Portland, one of the largest wholesale grocery houses on the Pacific coast, will build a distributing branch in Bend. Isador Lang, president of the company, authorized an announcement to this effect on Saturday.

The site selected for the new warehouse is the triangular lot on Wall street, bordered on one side by the Oregon Trunk spur which runs down to the flour mill. Within the next three weeks, according to Mr. Lang's statement, he will send his building superintendent to look over the property and arrange for construction.

Although the building to be erected may not be especially costly, nor the pay roll in connection with the business very large, the news of the company's intentions has been received with considerable satisfaction here as a realization of expectations that the town was bound to develop into an important distributing center for the remainder of Central Oregon. With Lang & Co. leading the way, it is pointed out, other business houses will soon follow, especially in view of the territory to be opened south and east of Bend by the construction of the Strahorn railroads.

Mr. Lang's purchase of the warehouse site was made within six hours of his arrival here Saturday morning on the first trip he ever made to Bend. Before purchasing he inspected the new saw mills and made a general study of business conditions which satisfied him as to the wisdom of his decision.

At the Commercial Club luncheon held Saturday noon Mr. Lang made a short talk saying that he was amazed at the development of the town and its possibilities in business lines. He left on his return to Portland on the night train.

#### JORDAN SEEKS NOMINATION.

County Treasurer Ralph L. Jordan has decided to come out for reelection to the Treasuryship, his announcement appearing this week. Mr. Jordan is a resident of Prineville and was returned to the office at the election in 1914 by a large majority. He seeks the Republican nomination.

#### F. A. BRAINERD DIES.

F. A. Brainerd, formerly superintendent of the Vancouver division of the S. P. & S., died last week in Tucson, Arizona, according to reports in the Portland Sunday papers. Mr. Brainerd was a frequent visitor in Bend on railway business and was well known here. He retired from the superintendency last year.

#### LOGAN TO MOVE.

The E. F. Logan Furniture Company expects to move into its remodeled quarters on Wall street some time this week. The building has been extended to give more room for storage purposes and display.

## CONCENTRATION ON CITY DEVELOPMENT, LADIES AIM

Beautification Was Keynote of Meeting of Club Held Last Saturday—New Members Wanted.

To concentrate upon problems with which Bend is concerned and to work along lines similar to those followed by the Commercial Club, was the decision reached last Saturday by the Ladies Auxiliary of the Commercial Club at its first regular meeting. Believing that branching into the social features which typify many women's organizations of this character will impair its effectiveness, the women determined to make community development their sole objective.

Saturday's meeting brought out many features which the ladies organization proposes to take up, all of which have an immediate bearing upon the development of Bend and the surrounding community. City beautification seemed to be the keynote of the first gathering of the club. There were many expressions of dissatisfaction with some conditions which exist, but it was felt that the best ends could be obtained by proceeding cautiously, taking up each problem at a time and following it through to a successful conclusion.

There were several who expressed the desire to see the cemetery improved in the way of providing water for the area, and cindering the main driveways. A committee consisting of Mrs. F. Dement, chairman; Mrs. J. H. Haner and Mrs. J. P. Keyes appointed to inquire into the necessary steps that should be taken to beautify the Pilot Butte cemetery.

Acknowledging the suggestion that suggest street signs would assist strangers and enable people of the town to become better acquainted with the streets, a committee consisting of Mrs. W. W. Faulkner, Mrs. H. J. Overturf and Mrs. J. Edward Larson was appointed to wait upon the council to ascertain its disposition with regard to this improvement.

The club will make a determined effort to obtain a large and representative membership, and it was urged that each member devote herself to obtain at least one new member in the near future for active enrollment.

## BUYS MORE LAND

### C. D. Hillman Makes Extensive Purchases in Interior.

That he expects to own approximately 125,000 acres of Oregon land before he leaves for his California home two days hence and that he may ultimately acquire as much as 250,000 acres in Oregon was indicated by Clarence D. Hillman, the Pasadena multi-millionaire, at the Hotel Benson last night.

Immediately after closing recently for the purchase of 22,000 acres of land in Central Oregon Mr. Hillman left for an extensive automobile trip through Eastern and Central Oregon, and upon his return to Portland yesterday announced that he had purchased 36,000 acres in Wheeler, Grant, Crook and Lake counties, from C. A. Ross of Spokane, and Harry S. Ramsey, who were represented on the inspection trip by their Seattle agent, Kay McKay. He paid a straight price of \$5 an acre, or \$180,000.

Mr. Hillman said last night that he would undoubtedly close deals with several Portland realty brokers with whom he has appointments today. He has options on 25,160 acres of land in Harney County, owned by the Oregon & Western Colonization Co., which has been held at a price averaging about \$20 an acre; on 19,000 acres near Pilot Rock, Umatilla county, held at a price of \$252,000; 31,000 acres in Klamath county and 16,400 acres in Crook county, handled by the Hunter Land Company, and another large holding in Wheeler county.

#### BEND HAS MANY CARS.

According to a recent bulletin published by the O-W. R. & N. dated December 31, 1915, Bend is rated as having 125 cars all of which are for private uses. Bend stands eighth on the list of Oregon towns on the O-W. lines as regards the number of cars used for private purposes.

#### GETS LOST IN BEND.

Bend is getting to be a large city. Monday Paul Garrison found a little girl on Wall street who was lost. She was on her way home from school but did not know what way to go. All she knew of the location of the family residence was that "it was down by a big red mill." Inquiry on Mr. Garrison's part failed to find anyone who knew where the little girl's parents lived so he went with her to find her home "down by a big red mill." The little girl was Fawn Benson and her home near the old Staats house in Deschutes addition.

#### LOGGING CARS ARRIVE.

Eight new logging cars for the Brooks-Scanlon Lumber Company were brought in this morning on the Oregon Trunk, and will be put in service in the logging operations at the Brooks-Scanlon plant.

## POST OFFICE TO BE RAISED

### WILL BECOME SECOND CLASS

#### Phenomenal Business Increases Justifies Action—Revenue for Nine Months More Than \$10,000—Change to be Effective in July.

With a revenue in excess of \$10,000 between the months of April, 1915 and January, 1916, the Bend post office will be raised from third class to second class in April, according to postmaster Henry B. Ford. Postal regulations require that post offices of the second class must have an annual revenue in excess of \$8,000.

The classification of postoffices in the country is made in April but are not effective until July. With the revenue of the office now more than \$2,000 greater than is required and with a month for further increases, no doubt exists that the local office will receive a boost by the post office department.

#### Business Justifies Change.

A phenomenal increase in every department of the Bend post office has been noted during the last year, according to Mr. Ford, who says that the business done in the last fiscal year has been double that of the preceding year. The prospects are that these increases will continue with the rapid growing population as noted by the local postal authorities.

In a recent letter from the post office department Mr. Ford was called upon to make a conservative estimate of Bend's population. Basing conclusions upon careful observation through postal business, Mr. Ford computes Bend's present population at 3,000. He said that 1,000 people were being served by the local office, of whom 1,000 lived outside of Bend.

#### Will Increase Efficiency.

When asked what the advance in classification meant to the local office Mr. Ford said that it would mean shorter hours for the postal clerks. They are now working more than 12 hours and with the change they would be on an eight hour shift. The change in the working hours will necessitate a larger force in the office, which, in turn he says, will mean better service to the patrons of the office. It will also mean better equipment and modern facilities for handling the mail.

The demands now being made upon the local office are greater than the present accommodations are able to meet. The box room is insufficient. There is a waiting list of more than 200 people who want boxes. In December a section of 100 boxes was added, only to be taken up immediately by the waiting list at that time.

## PROSPERITY IS NOTED

### Oregon Trunk Officials Impressed With Local Development.

(Portland Telegram.)  
"Central Oregon towns are taking on a prosperous air, every man is employed, dry farmers are looking forward to the benefits of excessive precipitation in increased crops and everybody is looking forward to better times," said W. D. Skinner, general traffic manager of the Spokane, Portland & Seattle railway system on his return from an inspection trip over the lines from Spokane westward. In the party also were General Manager, C. O. Jenks, General Superintendent George E. Votaw, Chief Engineer O. M. Lupper, Car Service Superintendent C. A. Vermillion and several other officials of the operating department on the various divisions.

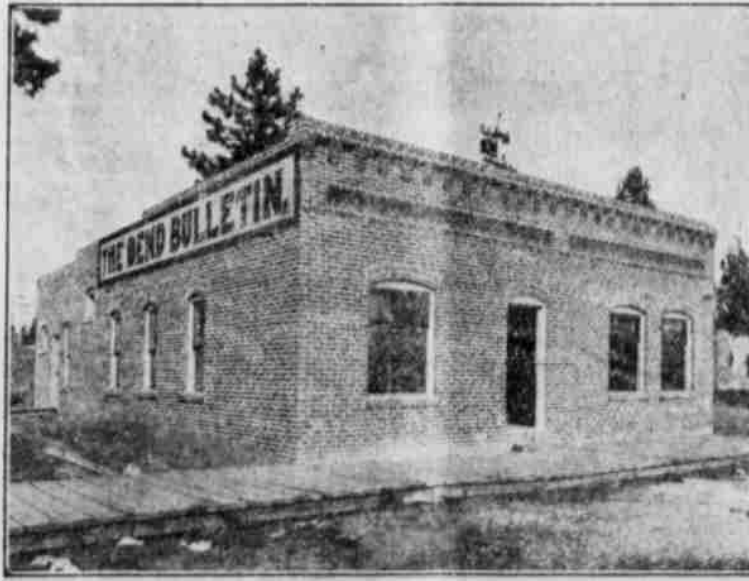
"All of the lines which suffered by the storms of a month ago are now in good condition. Frequent stops were made and shippers were interviewed to learn if there were any complaints about car shortage, but there were no complaints. But there is a shortage of labor east of the mountains.

"At Bend business appears to be particularly thriving. The large lumber mill of The Shevlin-Hixon Company will be ready to operate by March 20 and the expectation is that the Brooks-Scanlon mill will start up about April 1. There is much building activity in Bend."

## HOMES OF THE BULLETIN.



FOURTEEN YEARS AGO.



TO-DAY.

The Bulletin, through a special representative at Salem, will present next week a comprehensive account of the State-wide meeting which opens there tomorrow to formulate plans for state aid to irrigation, drainage and rural credits.