

# RIVER TERRACE

## Bend's Latest, Choicest and Closest In Residence Addition

---The ideal location for your permanent home. Facing the river---  
just across the Bend Water Light & Power Company's bridge---  
ONLY THREE MINUTES WALK from The First National Bank

### HANDSOME RIVER FRONT AND INSIDE LOTS

**Inside Lots** 50X110 feet to alley, ALL LEVEL and **Only \$250 to \$300**  
FREE FROM ROCK

**River Lots** 50X150 feet and CORNER LOTS 50 and **Only \$350 to \$400**  
60X150 feet to an alley

**EASY TERMS.** PROPERTY IS NOW BEING PLATTED AND **Will go on sale Saturday, December 4th**

**MAKE YOUR SELECTIONS AND RESERVATIONS NOW.**

**22 LOTS ARE ALREADY SPOKEN FOR.** We invite your inspection and comparison of this property and our prices with any addition to Bend.  
Graded Streets, Sidewalks, Water and Lights. We will be glad to show you over the property.

Temporary Office with  
H. H. DeArmond

## Harrison Latham Company, Agents

Oregon St. 2d door west  
First National Bank

## BEND LOST TO PRINEVILLE 12-0

### MUD SLOWS UP BOTH TEAMS

**Brandenburg Played Great Game—  
Local Line Was Weak and Visitors  
Made Good Gains—County H. S.  
in Line for Championship.**

Captain Everett Brandenburg and 19 other men of the Bend high school football team, was defeated last Saturday by the fast and heavy Crook county high school eleven of Prineville by a score of 12 to 0.

The above special mention given to the Bend captain is deserved, because he did two thirds of the tackling, made more than half the Bend yardage, and held the fast Prineville back field to fewer gains than all the other members of the Bend team put together. He was the only man who could stop Brosius, Prineville's fast right half back. Repeatedly he beat the Bend ends down on punts and tackled the Prineville catcher in his tracks. It was Brandenburg's best game. He was clearly the star of the two teams. Had it not been for the exceedingly good headwork displayed by the Bend captain, Prineville doubtless would have scored a half a hundred points on the locals.

There was nothing particularly spectacular in the game. A muddy field prevented the use of much open field work. Bend could not get its forward passes in operation and the Prineville line was too heavy for the Bend backs to make steady gains.

**Game Has Unusual Feature.**  
One unusual feature of the game was the reference made by Coach Lawson of Prineville to the Bend captain for a decision on a disputed play. In the last seconds of the second period Prineville punted to Bend on about the 50 yard line. Brandenburg signaled for a fair catch and then dropped the ball, which was seized by a Prineville player for a touch down. The referee and the umpire both allowed the score but Coach White, of Bend, insisted that Brandenburg had been fouled after signaling for a fair catch. Coach Lawson, said that he was willing to leave the matter entirely to Brandenburg

and asked the Bend captain whether he was tackled. Brandenburg asserted that he was and Coach Lawson disclaimed the Prineville touchdown.

At no time in Saturday's game was Bend a serious contender for touchdowns. The team seemed to be afraid of the Prineville line. Young, who has played a stellar game through the season failed to show his usual class.

#### Visiting Line Heavier.

The visiting line was several pounds to the man heavier than Bend's line. The field was muddy and the Prineville line shot 'the Bend line full of holes at almost every angle. Only bad fumbles, and the clever defense work by Brandenburg kept Prineville from rolling up a pleasant looking score for the county seat gridiron fans.

Bend did show spark on two occasions. Once, when Prineville had the local high school lads on their own one and a half yard line with four downs in which to make the distance, Bend held the Prineville backs to a standstill. Again in the second period Prineville pushed the ball up to Bend's two yard line and was held there for three downs. On the fourth down Brosius took the ball across the goal on a wide right end run for the first touchdown. Prineville's second touchdown came in the third period when the visitors, working smoothly, ran the ball up the field and Charlton, Prineville's fast full back, was sent over the line. No

goal was kicked on either touchdown.

The loss of Saturday's game puts Bend out of the running for the championship of Central Oregon. Prineville plays Redmond next Saturday.

#### Saturday's line up was:

Prineville	Position	Bend
Bonney	l. e. r.	Grube
Yancy	l. t. r.	Boyd
Claypool	l. g. r.	Horner
Dobbes	c.	Ricks
Lister	r. g. l.	Rongey
McFarland	r. t. l.	Hunnell
Broderick	r. e. l.	Gorton
Powell	q.	Jackson
Brosius	r. h. l.	Brandenburg
Ramsay	l. b.	Young
Charlton	l. h. r.	Johnston

Referee: Steve Steidl; Bend. Umpire: M. Dougherty.

### APPEAL FOR CHILDREN

#### Boys and Girls Aid Society Asks Aid For Dependents.

The Boys' and Girls' Aid Society is making its annual appeal to the schools and the public for Thanksgiving contributions of money, food supplies and clothing. For thirty years the society has been caring for the dependent and neglected children of Oregon, and it should have the generous support of all citizens interested in child welfare.

During the past year the Society has cared for 491 children in its Receiving Home, and supervised over

500 children whom it has placed in private homes. Whereas the aim of the Society is to place the child as quickly as possible in a suitable home the care of children at the Receiving Home is necessarily a large factor in the work. Such care includes scientific treatment, as over 80 per cent of the children committed are not placeable until physical defects and ailments have been remedied. Until they are placeable the children must live in the Receiving Home, where everything is done to give them the advantages of normal children. It is in furtherance of this work that the co-operation of public spirited people is sought.

All contributions should be addressed to the Boys' and Girls' Aid Society, Portland, Oregon, and should be shipped over the following railroads, which carry all donations to the Society free of charge from November 15 to December 31st. Oregon-Washington R. R. & Navigation Company, Spokane, Portland & Seattle Railway.

The moderate building restrictions on Boulevard Addition will make it the desirable place to own a lot. Adv.

IT WAS ALL ON ACCOUNT OF A MISTAKE.

SAY, BUT HE'S MADE! GEE WHIZ!

JUDGE, I'LL BET SOMEBODY HAS TRICKED HIM. THAT'S ORDINARY TOBACCO, AND HE USES THE NEW CUT REAL TOBACCO CHEW.

W-B CUT CHEWING MEANS MORE COMFORT—MORE SATISFACTION. IT COSTS LESS BECAUSE YOU USE LESS TOBACCO. A LITTLE CHEW SATISFIES.

A MAN who uses only ordinary tobacco would probably never kick if somebody changed brands on him. But W-B CUT Chewing—the Real Tobacco Chew, new cut, long shred—is so different from ordinary tobacco, so much more satisfying that nothing can take its place with a man who knows. Get a pouch of W-B CUT Chewing and give it a quality test. You can tell. "Notice how the salt brings out the rich tobacco taste!"

Made by WEYMAN-BRUTON COMPANY, 50 Union Square, New York City

## OREGON FIRST, LAST and ALL THE TIME

Giving Preference to Oregon Institutions  
Makes Prosperity in Oregon

# OregonLife

Oregon's Successful Life Insurance Company

Does Business Exclusively in Healthful Oregon

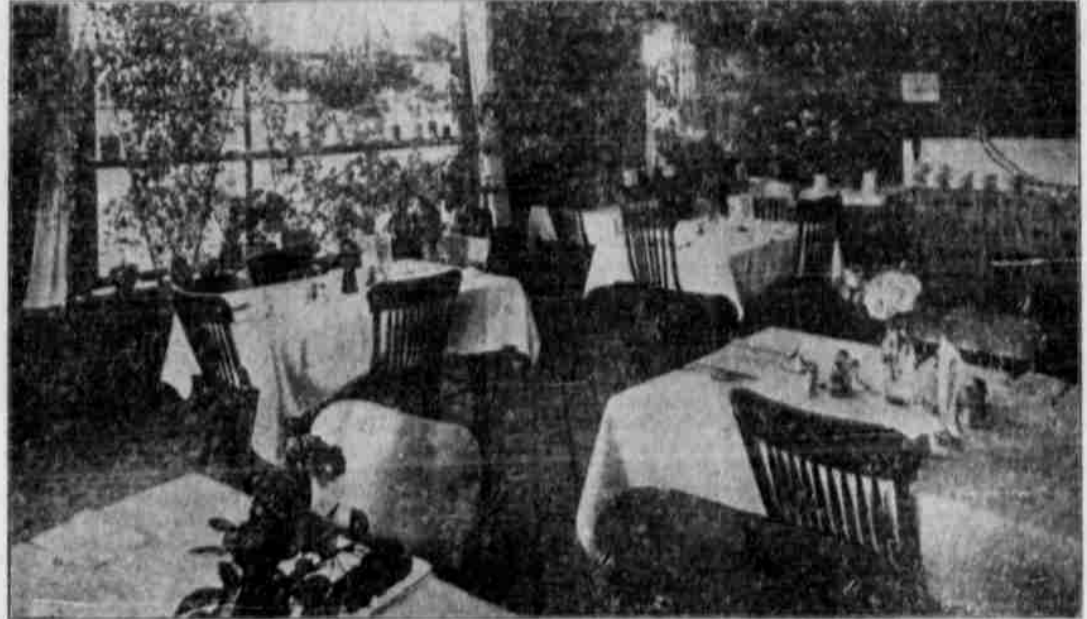
Invests all Funds in Oregon Securities

### BEST FOR OREGONIANS

Home Office: CORBETT BUILDING, Portland, Ore.

A. L. MILLS, President; L. SAMUEL, General Manager; Ashley Forrest, District Agent.

Before You Sign an application for Life Insurance, examine our Superior Policy Contracts and Low Premium Rates.



THE COZY DINING ROOM.

You may arrange your Thanksgiving Dinner and have it served any way you wish at

## THE COZY RESTAURANT

RESERVE YOUR TABLE EARLY.