

DISTRICT LAW AIDS PROJECTS

AND PROJECTS AID RAILROAD

Strahorn Wants to See Irrigation in Central Oregon on Its Feet—Three Sections are Now Considering Work Under District Plan.

One phase of the Strahorn plans for the development of Central Oregon is the rejuvenation of the various irrigation projects which, for one reason or another, have languished since their inception, and the promotion of others which have been studied and reported feasible, but on which no work has been done. By so doing Mr. Strahorn expects to make satisfied farmers out of those now on the ground, to bring new settlers in and to enlarge the volume of trade for the Oregon, California & Eastern.

In this connection recent activity in the promotion of irrigation projects under the district law is of especial interest.

Brought to a realization of the possibilities of the law through the activity under it of the settlers in the Grandview country who are interested in the Suttles lake irrigation project, the people of three other districts are taking active measures for the promotion of their projects in the same manner, while the district law is being looked to as the means of ending the difficulties in which existing projects find themselves.

The Silver Lake Project.

One project, the development of which would be especially advantageous to the new rail line, is that at Silver Lake, on which a preliminary report has just been made by the engineers working under a joint state and federal appropriation. On receipt of the report a special meeting of the Silver Lake Water Users Association was called for yesterday afternoon to discuss the organization of a district and from the interest taken it is expected that irrigation in that section will not be long postponed.

The report considers the project in four divisions, Silver Lake, Paulina, Horning Bend and Fort Rock. They cover a total of 48,600 acres and the estimated cost of reclamation is \$28.10 per acre, one of the lowest acre costs of any project in the state.

Two units of the project are recommended as immediately feasible. Development of a third is advised as

soon as the land owners on it express a desire therefor, and of the others as soon as the adjudication of certain streams show water to be available. Another project in the same section which Mr. Strahorn wishes to see put on its feet is that of the Portland Irrigation Company at Paisley. Recent action by the Desert Land Board in fixing the lien on the lands was taken by him as a step toward the desired result. As soon as litigation between the irrigation company and a live stock company over water rights can be settled, it is expected that the project will be completed.

Other Districts Proposed.

Other proposed districts, not on the line of the O. C. & E. as at present announced, but of importance in contributing to the prosperity of Central Oregon and, incidentally, therefore to its railroads, are the Ochoco district near Prineville and the so-called North Unit, comprising a large portion of Jefferson county.

The question of the formation of the Ochoco district comes before the Crook county court on December 10 at which time an election on the question will undoubtedly be ordered. The lands included in the district are in the immediate neighborhood of Prineville and the people of the city are taking considerable interest in seeing the project take shape.

The North Unit.

The North Unit irrigation district in its size, cost and engineering features is one of the largest ever proposed in Oregon, and will show up well in comparison with other large projects elsewhere in the United States. Water for the irrigation of the project, according to the plan proposed by the engineers of the co-operative Deschutes survey, will be stored by a dam at Benham Falls and one at Crane Prairie. At Aubrey falls, below the town of Tumalo, it will be diverted by a high diversion dam and thence carried by canal across the Crooked river and onto the lands of the project.

The project includes approximately 100,000 acres and the cost of reclamation is estimated to be \$5,519,000 or \$55.58 per acre. A petition for the formation of the district is now being circulated.

The City of Bend has one especial interest in the proposition aside from that of seeing the country developed in that it would insure a steady and even flow of water by the town during the summer months during which the storage reservoir above town would be drawn upon.

The C. O. I. Project.

In a recent communication made by O. Laurgaard to the Desert Land Board the district idea is suggested as a means of working out and adjusting the difficulties now existing between the settlers on the C. O. I. project and the company. The plan contemplates the elimination of the company and the development of all lands in the vicinity of Bend and to the north and east which have been set aside for irrigation development.

Another irrigation plan is that just announced from La Pine where a new company has recently purchased the Pringle Falls power plant.

The plans of the company, as stated by the La Pine Intermountain, are to supply power for irrigation of the La Pine basin and also light and power for manufacturing purposes in the town of La Pine.

BEND BEATS REDMOND 6-0

Locals Slowed Up and Score Only Once on Forward Pass—Team Was Over Confident.

The Bend high school football team defeated the Redmond eleven on its own grounds last Saturday by a score of 6 to 0, but it was a much different looking and fighting team than the one that was defeated the previous Saturday by a score of 29 to 0.

From reports coming both from members of the team and Coach White of the Bend high school, Bend was overconfident and did not play up to its regular standard.

Bend's only touchdown came in the first quarter after the ball had been worked down the field on straight football. Hunnell, Bend's left tackle laid out on the end and Young shot a long well directed forward pass. Hunnell carried the ball 20 yards and was downed just vore the goal line. Goal was not kicked.

During the major part of the game the ball was in Redmond's territory, and only once were the Redmond lads in a position to score. The ball had been pushed down the field with Redmond's heavy backs plugging holes in the Bend defense. When the ball had been advanced within one foot of the goal line, the ball was lost on downs. Bend was dangerous several times, but costly fumbles and slow field work kept them from scoring again. Bend was frequently penalized for offside.

The reorganized Redmond team played strong football throughout. Duvall, who played tackle in the Bend-Redmond game played here was transferred to right half and caused the Bend defense considerable trouble.

The crucial game of the season for the three Crook county schools will be played next Saturday in Bend when the Bend eleven meets Prineville. Prineville has not played since its game with Bend at Prineville, and both teams have been considerably strengthened since that time.

Bend	Position	Redmond
Gorton	l. e. r.	Steinkoph
Hunnell	l. t. r.	Malarkey
Rongey	l. g. r.	Dinsey
Ordway	c.	Ricks
Hornor	r. g. l.	VanAllen
Boyd	r. t. l.	Woods
Grube	r. e. l.	Perry
Jackson	q.	Shively
Brandenburg	l. h. r.	Duvall
Young	f.	Johnson
Johnston	r. h. l.	Young

The First National Bank of Bend

BEND, OREGON

United States Depository for
Postal Savings
BEND, REDMOND, PRINEVILLE
OREGON

With fifteen years of experience in the Banking business and total resources of over \$450,000, we are now handling over 1800 accounts and solicit yours. WE BELIEVE THE ONLY LASTING PRESTIGE IN THE BANKING BUSINESS IS GAINED BY SERVICE, and render service to our Customers as follows:

Regular Bank Loans

WITH OUR KNOWLEDGE OF LOCAL CONDITIONS AND OUR LARGE RESOURCES WE ARE PREPARED TO MEET EVERY LEGITIMATE DEMAND FOR LOANS.



Sheep and Wool Loans

WE REPRESENT THE COLUMBIA BASIN WOOL WAREHOUSE COMPANY OF NORTH PORTLAND, AND HAVE LOANED IN THIS TERRITORY OVER \$50,000 THIS FALL ON SHEEP AND WOOL. SHEEP MEN NO LONGER HAVE TO SACRIFICE THEIR WOOL; WE ARE PREPARED TO MAKE ADVANCES AT 8% FOR RUNNING EXPENSES, AND LIBERAL ADVANCES ON WOOL SALE DAYS, IF THE PRICE IS NOT SATISFACTORY.



Cattle Loans

THROUGH THE PORTLAND CATTLE LOAN COMPANY OF NORTH PORTLAND, WE ARE PREPARED TO MAKE LOANS ON FEEDERS AT ALL TIMES.



Farm Loans

WE REPRESENT THE VERMONT LOAN & TRUST CO., AND CAN MAKE LOANS ON GOOD FARMS, FOR 3 TO 5 YEARS, AT 8%. WE MAKE OUR OWN INSPECTIONS AND CLOSE LOANS IN BEND PROMPTLY.



Safety Deposit Department

OUR SAFETY DEPOSIT VAULTS ARE THE LATEST AND SAFEST. BOXES FOR RENT AT FROM \$3.00 TO \$5.00 PER YEAR. YOU KEEP THE KEY WE KEEP THE BOX.



Savings Department

JANUARY 1st, 1916, WE WILL OPEN A SAVINGS DEPARTMENT IN WHICH WE WILL OPEN ACCOUNTS FOR \$1.00 UP, AND ALLOW 4% INTEREST THEREON, COMPOUNDED IN JANUARY AND JULY. SMALL ACCOUNTS SOLICITED. ASK OR WRITE FOR PARTICULARS.



EQUIPPED BY EXPERIENCE, LARGE RESOURCES AND WITH THE ABOVE CONNECTIONS WE ARE PREPARED TO RENDER EVERY SERVICE TO PATRONS CONSISTENT WITH GOOD BANKING, AND IT WILL BE TO OUR MUTUAL BENEFIT FOR YOU TO DO YOUR BANKING BUSINESS WITH THIS BANK.



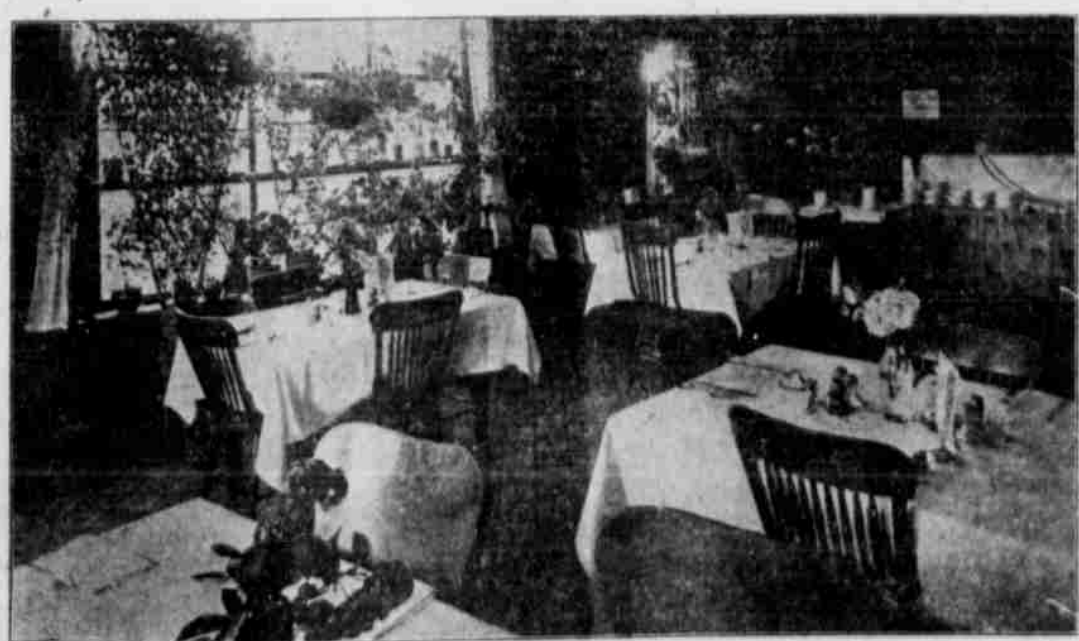
The First National Bank of Bend

BEND, OREGON



GENERAL VIEW OF SHEVLIN-HIXON PLANT.

Logging pond dam at left, above and running to right, saw mill and sorting shed with power house in front. In center, office building, lumber yard clearing in rear. On right, bridge connecting plant with main line of Oregon Trunk, at right in distance, planer shed.



THE COZY DINING ROOM.

You may arrange your Thanksgiving Dinner and have it served any way you wish at
THE COZY RESTAURANT
RESERVE YOUR TABLE EARLY.