



Copyright, 1914, by Panama-Pacific International Exposition Co. H. S. Crocker Co., official photographers

WONDERFUL TOWER OF JEWELS AND SOUTH GARDENS.

At the left is shown the Tower of Jewels, 430 feet high, and the south facade of the main palace, fronting on half a mile of subtropical gardens of the Panama-Pacific International Exposition, to open in San Francisco in 1915. At the right is the Festival Hall.

NATIONS OF FAR EAST TO EXHIBIT IN 1915.

The commission sent by the United States government to the nations of the far east to request their participation in the Panama-Pacific International Exposition at San Francisco next year returned to New York May 12, bringing news that eight of those governments will be represented.

The commissioners, including ex-Governor Alva Adams of Colorado, Thomas G. Stallamith, chief of the agricultural department of the Exposition, and Welton Stallamith, secretary, gave out the following list of countries, with the appropriations made by each:

China	\$1,000,000
Philippine Islands	400,000
Japan	400,000
Australia	400,000
Siam	250,000
Dutch East Indies	250,000
New Zealand	250,000
Cochin China	150,000

This brings the total number of foreign countries which have decided to participate officially up to thirty-six, Austria being the latest to swing into line, with an appropriation of \$400,000, half of which is contributed by commercial organizations.

A Concrete SKYSCRAPER IN BEND

In 1914 would be out of place. It would be a few years ahead of the times. Not so however with concrete FLOORS, SIDEWALKS, STEPS, CISTERNS, ROOFS, ROADS, Etc., Etc. No material is cheaper or more durable for these purposes than CONCRETE.

And when you build CONCRETE, use only the best cement, sand and gravel. It is cheaper in the end.

We can supply you with the proper sizes of washed sand and screened gravel for your particular purpose. Ask for quotations.

Bolton, Ruetenik & May

FRANK MAY, Mgr. Bend, Ore.

Office with Robt. B. Gould, Deschutes Bank Building.

"Concrete Ultimately, Why Not Now?"

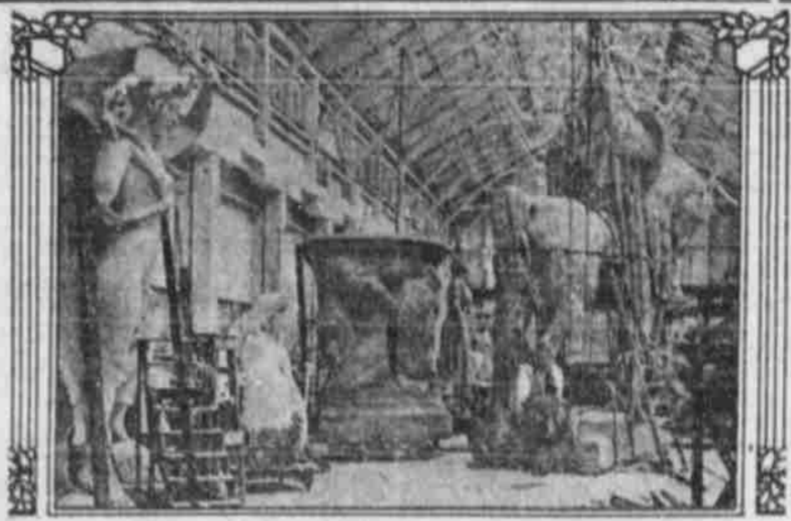
GLOBE trotters and officials from all parts of the world who have visited the Panama-Pacific International Exposition grounds at San Francisco have expressed their astonishment and delight at the wonders already revealed there. "The most stupendous undertaking of the kind in history," "The farthest advanced toward completion" and "The most beautiful site and color effect of any exposition in the world" are a few of the expressions from men who are familiar with all of the great world expositions of modern times.

The exhibit palaces are of vast size. In the Palace of Machinery 20,000 people in masquerade costumes danced all night beneath the illuminated arches over nine acres of floor space. Lincoln Beachey flew an aeroplane to the same building.

No exposition has ever attracted such attention abroad. Thirty-six of the world's nations have accepted America's invitation to participate and will present on an elaborate scale exhibits revealing their progress. The participating nations are as follows: Argentina, Australia, Austria, Bolivia, Brazil, Bulgaria, Canada, Chile, China, Costa Rica, Cuba, Denmark, Dominican Republic, Ecuador, France, Great Britain, Guatemala, Haiti, Holland, Honduras, Italy, Japan, Liberia, New Zealand, Nicaragua, Panama, Persia, Peru, Portugal, Salvador, Spain, Sweden, Turkey, Uruguay and Venezuela.

Work is being rushed on the splendid illuminated towers, fountains and festival courts, where will be shown the masterpieces of architectural, landscape and sculptured decorations and the wonderful outdoor mural paintings, some of them 100 feet long and executed by eleven of America's greatest artists. The garden and landscape effects are almost completed at this writing, over a million rare trees, flowering shrubs and plants being used.

This greatest of universal expositions already gives proof that it will present the masterpieces of the world of art and that in its harmonious beauty, its high educational value and utility, it will be unsurpassed in history.



Copyright, 1914, by Panama-Pacific International Exposition Co. H. S. Crocker Co., official photographers

COLOSSAL STATUARY FOR PANAMA-PACIFIC EXPOSITION.

INTERIOR of one of three studios at the Panama-Pacific International Exposition to open in San Francisco next year, showing the partially completed figures, some of them thirty feet in height, which will adorn the vast courts.

BEND LODGE I. O. O. F. INSTALLS.

Installation of officers for the coming six months took place at the meeting of Bend Lodge I. O. O. F. No. 118 on Monday night. The elective officers who were installed were Bert Shuey, N. G., H. I. McKim, V. G., C. W. Thorathwaite, Treasurer, and George Gove, Secretary. The following were appointed to office: E. Meistad, warden, J. H. Connors, conductor, J. E. Rainey, chaplain, A. H. Gove, R. S. N. G., C. Cook, L. S. N. G., L. H. Glenn, R. S. V. G.; C. Anderson, L. S. V. G., Roy K. Allgood, R. S. S., Julius Janett, L. S. S., L. C. Fleming, inside guardian. After the installation ceremonies, refreshments were served.

REBEKAHS ELECT OFFICERS.

The Rebekahs have elected officers for the coming six months as follows: Mrs. L. C. Fleming, N. G., Mrs. J. Kelly, V. G., L. C. Rudow, Treasurer and Guy McReynolds, Secretary. Installation ceremonies will be held soon.

REV. WILKINS LEAVES.

Rev. G. H. Wilkins, minister of the Presbyterian church since last fall, left with his family on Monday night for Portland. After attending a church conference at Eugene, Mr. Wilkins expects to take a vacation at the beach. His successor in the local church has not yet been selected, but it is expected that the pulpit will be filled by visitors from time to time during the summer.

Peters Shot Gun and Rifle ammunition. Skuse Hardware Co.—Adv.

LAND PRODUCTS SHOW

Will Be Held in Portland in the Fall—Many Premiums.

PORTLAND, July 7.—It has been definitely decided that the commercial, industrial and development organizations of Oregon will hold a big Industrial and Land Products show in Portland from October 26 to November 14, and the Armory, together with one or more temporary structures, has been selected as the site. About 80,000 square feet of space will be utilized and this will be nearly equally divided between soil products and products of the workshop. About 12,000 square feet will be used to show municipal and educational work. It is expected that the best showing of apples and other fruit ever made in Oregon will be found at this show. The transportation companies have taken an active interest in it and practical co-operation will be rendered by the Portland Commercial Club, Portland Chamber of Commerce, the Portland Ad Club, the Retailers' Association, the Rotary Club and the press of Portland and the state at large.

The premium list for this land show, which will be issued in about ten days, will provide for about \$20,000 in cash and special prizes. In addition to the premiums, especially engraved diplomas will be given. It is expected that the states of Utah, Idaho and Washington will send land product exhibits and otherwise participate in this great exposition.

County and district exhibits are particularly desired by the management, also a complete showing of the various phases of the lumber industry of the Northwest.

MARKET REPORT.

NORTH PORTLAND, July 3.—Receipts for the week have been: cattle 1782, calves 28, hogs, 4018, sheep 8859. An extraordinarily heavy run of cattle the first of the week, sixty-three cars being unloaded, half of these being from California points. Several cars of fed stuff sold at \$7.50, grass steers \$7.25. Cows \$6 to \$6.25, spayed heifers \$6.75, price on bulls ranging from \$4 to \$4.50. Swine trade opened firm and remained unchanged to the end of the week's period, \$8 was the average top price, with receipts of fair volume. Sheep house action was never more brisk for the month of June than it has been for the last few days. The movement to market attained large proportions, with receipts climbing up around 9000 for the five days. Top grades of sheep and lambs in good demand, and prices steady with last week. Top yearlings \$5, two-year olds \$4.75, ewes \$4.25, lambs \$6.

FRUIT JARS

Mason—Sure Seal Skuse Hardware Co.—Adv.

AN ELECTRIC CLEANER.

The "Bee" Electric suction cleaner—a thoroughly efficient machine offered at a lower price than has ever before been quoted for a high class cleaner. The "Bee" 1914 model, contains all improvements up to date. Its working efficiency has been almost doubled and with reasonable care it can be depended upon to do perfect work for many years. It is so simple in operation, and so light in weight (only 10 pounds) that a child can run it. The old style cleaners are heavy and cumbersome, requiring considerable strength to operate, whereas the "Bee" is controlled by a touch of the finger and the turn of thumb screw adjusts it to work over rugs or carpets of any make or thickness. Ask for a demonstration. N. P. Weider, local agent.—Adv.

FOR RENT—Two room suites furnished for light house keeping. Henkle & Ryan. 12tf—Adv.

BENEFITS LOCAL PEOPLE.

Bend people have discovered that A SINGLE DOSE of simple buckthorn bark, glycerine, etc., as compounded in Adler-ika, the German appendicitis remedy, removes gas on the stomach and constipation AT ONCE. The Patterson Drug Co.—Adv.

WHILE THEY LAST

A Folding Ironing Board With Every Electric Iron At the regular price \$3.75

The Board Cannot be Bettered. The Iron is Guaranteed Forever.



Bend Water Light & Power Co.

The New Perkins Hotel

PORTLAND, OREGON

extends to you a cordial invitation to make this hotel your headquarters.

THOROUGHLY RENOVATED AND REFITTED.

Rooms without bath \$1.00 and up. Rooms with private bath \$1.50 and up. LOCATION CENTRAL. BEST OF SERVICE.

A RESTAURANT—WITH FOOD AND PRICES RIGHT.

C. H. SHAFER, Manager

Building Material LUMBER, SHINGLES



The Miller Lumber Company Bend, Oregon.

Wenandy Livery & Auto Co.

NEW AUTO TRUCKS

Will be put on between Bend and Silver Lake April 1.

BEND-LA PINE	\$2.50
BEND-FREMONT	\$4.00
BEND-FORT ROCK	\$4.50
BEND-SILVER LAKE	\$5.00

Reasonable Rates

will be charged on all Express and Baggage.

POLK'S OREGON and WASHINGTON Business Directory

A Directory of each City, Town and Village, giving descriptive sketch of each place, location, population, telegraph, shipping and banking points also Classified Directory, compiled by business and profession.

R. I. POLK & CO., SEATTLE