

EAST AND WEST MEET

Walter McCormack, Famous Grand Opera Tenor, makes Friends with the Blackfeet Indians from Glacier National Park

The East and the West came together in a rather striking and unusual fashion at the recent concert given by the St. Paul Symphony Orchestra in the Auditorium at St. Paul. The Indians attended the concert as guests of L. W. Hill and were very appreciative not only of the splendid

solos sung by Mr. McCormack, but of the rather intricate and high-brow type of orchestration rendered by Prof. Rothwell and his well-known orchestra. Chief Fred Big Top, in referring to the concert, said he enjoyed it very much—“some of it was just like Indian music.”

The Indians applauded long and loud at times and attracted considerable attention themselves. While the elite of St. Paul were present in evening dress they had nothing on the Indians, who were very elaborately attired and carried themselves with dignity and ease.

After the concert, the Indians were introduced to and photographed with Mr. McCormack as shown in the picture above. They extended him a cordial invitation to visit their native home, Glacier National Park, Montana, next summer.

SAWHILL TELLS OF LAND SHOWS

CENTRAL OREGON WAS POPULAR

League Secretary Calls Attention to Importance of Cheap Agricultural Acreage, as Contrasted to High Priced Fruit Lands.

By J. E. SAWHILL, Secretary Central Oregon Development League.

(Written especially for The Bulletin) This being the first year that Central Oregon was represented at the land shows in the East and in fact the first year that Oregon as a state has made an effort to be represented at these great shows, it is no doubt a matter of general interest to know some of the results and experiences that were obtained there.

Central Oregon was represented at the Minneapolis show by a strictly local exhibit installed by the Oregon & Western Colonization Co., J. H. Stinson of Prineville being in charge and ably assisted by Mrs. Stinson. The Oregon & Western exhibit consisted almost entirely of grains and grasses. This exhibit took all the prizes for the best display of forage crops at the Minneapolis show. Leon J. Chapman, secre-

tary of the Ontario Commercial Club, was also very much in evidence with one of the very best displays of apples in the entire show. The Oregon state exhibit contained a sample or two of almost every product that can be grown in the temperate zone. Prof. Thomas Shaw of the Great Northern Railway made the statement after a visit to the Oregon booth that Oregon was capable of a greater variety of agricultural products than any other state in the Union. L. W. Hill pronounced the Oregon state exhibit to be the finest exhibit that he had ever seen at any land show. O. W. Freytag of Oregon City had charge of the installation of the exhibit at both the Minneapolis and Chicago shows and was on hand at all times to sing the praises of the Willamette valley. The writer used his best efforts at both shows to let people know a few of the wonderful resources of the Central Oregon country.

Not All Fruit Lands.

The greatest benefit that the state of Oregon in general and Central Oregon in particular received from the land shows was in dispelling the impression that prevails throughout the East that Oregon had no lands to offer the prospective settler except high priced fruit lands. The quality of the grains and grasses shown in the exhibits demonstrated that Oregon not only ranks first in the quality of its fruit products but that she is destined to be a strong competitor for honors in grains and grasses. The class of settle that we must look to for the settlement of the Central Oregon country is not the type to which fruit land literature will make an appeal. It is capable of proof that the same amount of money invested in the production of livestock will bring greater returns than it will if invested in the best fruit land that lies out of doors. We have in Central Oregon every condition that goes to the production

of high class meat and dairy products and we should devote more time and energy to the exploiting of this branch of our agriculture.

People Don't Know.

Another important lesson as a result of attendance upon the land shows was the fact that the great majority of the people who are looking for homes in the Northwest are entirely unfamiliar with conditions as they exist. This makes it imperative that we devote more of our energy to the taking care of the settler after he reaches us. The fact that we were making an endeavor to establish demonstration farms in every community to which the new settler can go and get reliable information as to the best methods and best crops was a very telling argument with all of the prospective settlers to whom the writer talked.

Central Oregon has demonstrated that profitable agricultural crops can be produced and if we now demonstrate that we are ready and willing to do all in our power to assist the new settler to get started when he comes, complete settlement of Central Oregon will be accomplished in a very short space of time.

The keen interest that was shown by the visitors at both the Minneapolis and Chicago shows in the Central Oregon country and the fact that many of the large colonization companies are now investigating the possibilities of this section seem to indicate that we will have a larger influx of settlers next year than we have had before.

Over 70,000 attended the Minneapolis show and over 250,000 visited the Chicago show. The land shows have lost much of the novelty that attracted visitors in previous years and from now on the attendance will be made up largely of people interested in the back to the farm movement. The personal contact that is possible at such places as the land shows is the most effective kind of

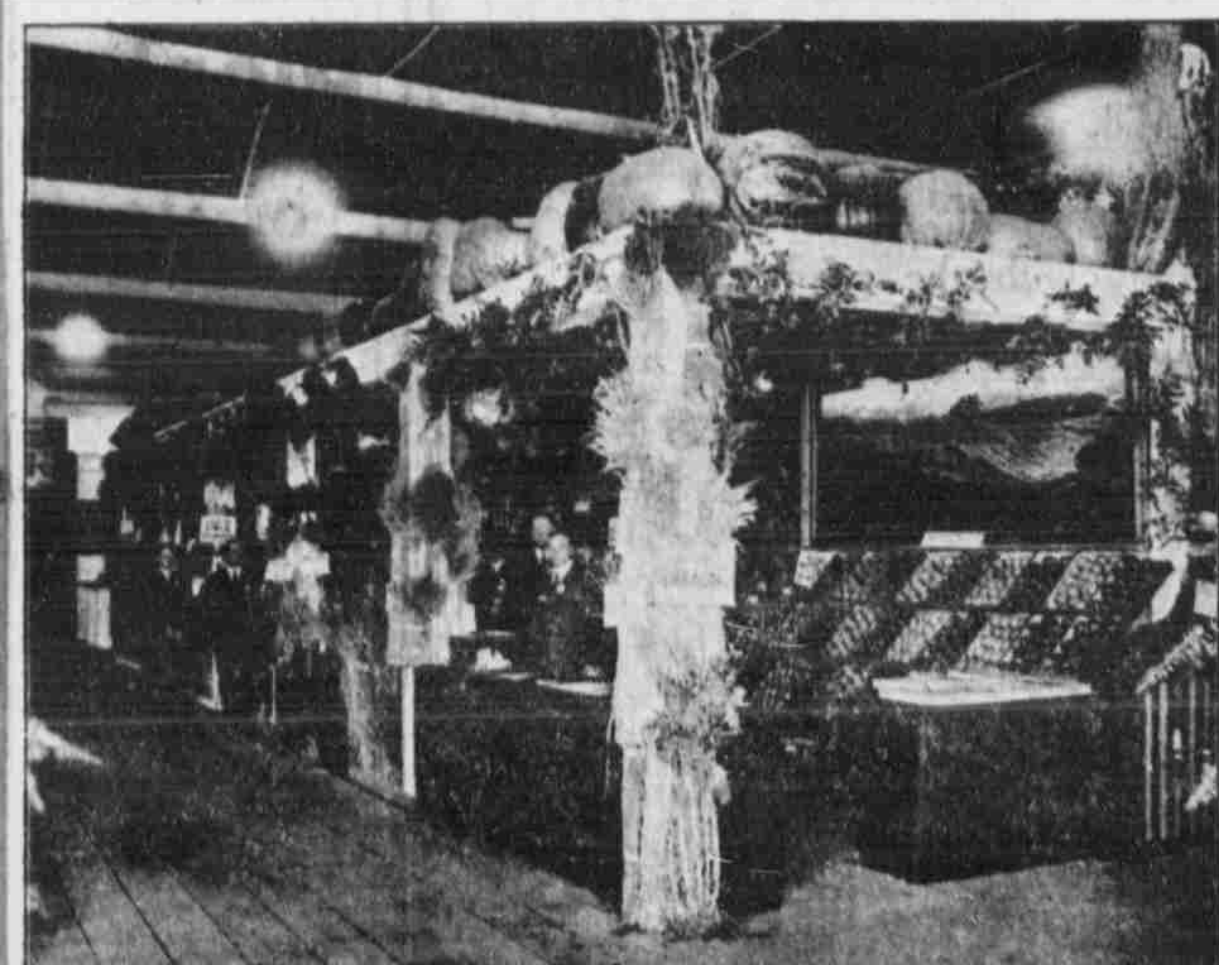
publicity. It is to be hoped that everyone interested in the development of Central Oregon will make it a point to see that this section is properly represented at the land shows which will be held next year.

FARM LOANS.

I am negotiating with a large corporation with ample funds to enter this district and make farm mortgage loans and desire to secure a few good applications to submit for consideration. If you desire a loan call and see me. ROSS FARNHAM, Attorney at Law, Old 1st Nat. Bank Bldg. Bend, Ore.

RESTORATION TO ENTRY OF LANDS IN NATIONAL FOREST.

Notice is hereby given that the lands described below, embracing 293.86 acres, within the Deschutes National Forest, Oregon, will be subject to settlement and entry under the provisions of the homestead laws of the United States and the act of June 11, 1906 (34 Stat., 233), at the United States land office at Lakeview, Oregon, on March 4, 1913. Any settler who was actually and in good faith claiming any of said lands for agricultural purposes prior to January 1, 1908, and has not abandoned same, has a preference right to make a homestead entry for the lands actually occupied. Said lands were listed upon the applications of the persons mentioned below, who have a preference right subject to the prior right of any such settler, provided such settler or applicant is qualified to make homestead entry and the preference right is exercised prior to March 4, 1913, on which date the lands will be subject to settlement and entry by any qualified person. The lands are as follows: The NW 1/4 of NE 1/4, the S 1/2 of NE 1/4 of NW 1/4, the S 1/2 of NW 1/4 of NE 1/4 of NW 1/4, the NE 1/4 of NW 1/4 of NE 1/4 of NW 1/4, the NE 1/4 of NE 1/4 of NW 1/4, Sec. 24, the S 1/2 of SW 1/4 of SE 1/4, the S 1/2 of NE 1/4 of SW 1/4 of SE 1/4, the W 1/2 of SE 1/4 of SE 1/4, the W 1/2 of NE 1/4 of SE 1/4, the SE 1/4 of NE 1/4 of SE 1/4, the SE 1/4 of SE 1/4 of SE 1/4, Sec. 13, T. 24 S., R. 3 E., W. M., 140 acres, application of James L. Benson, of Lapine, Oregon; List 6-731. The E 1/2 of NE 1/4 of SE 1/4, the SW 1/4 of NE 1/4 of SE 1/4, the SE 1/4 of NW 1/4 of NE 1/4 of SE 1/4, SE 1/4 of SE 1/4, the SE 1/4 of SW 1/4 of SE 1/4, the SE 1/4 of NE 1/4 of SW 1/4 of SE 1/4, Sec. 11, T. 21 S., R. 10 E., 85 acres, application of Herbert J. Finley, of Dalhart, Texas;



OREGON AT THE NORTHWEST PRODUCTS EXPOSITION

The state of Oregon was fully represented at the Northwest Products Exposition by the finest collections of fruits, grains, grasses and vegetables that the state has ever sent East to an industrial and agricultural show. In charge of the

booths were Messrs. O. E. Freytag of Oregon City, J. E. Sawhill of Bend, and M. J. Duryea of Eugene, Oregon.

All three gentlemen were prominent speakers at banquets given by the Minneapolis Civic and Commerce Association

during the course of the land show. Thousands of booklets, leaflets and folders of handsome appearance were distributed to the land seekers who crowded the show during the entire two weeks.

List 6-735. The NE 1/4 of NE 1/4 of SW 1/4 of NE 1/4, the W 1/2 of NE 1/4 of SW 1/4 of NE 1/4, the E 1/2 of NW 1/4 of SW 1/4 of NE 1/4, the NE 1/4 of SW 1/4 of SW 1/4 of NE 1/4, the W 1/2 of W 1/2 of SW 1/4 of NE 1/4, the NW 1/4 of NW 1/4 of NE 1/4 of SW 1/4, N 1/2 of S 1/2 of NE 1/4 of SW 1/4, the N 1/2 of NW 1/4 of SW 1/4, the E 1/2 of SE 1/4 of SW 1/4, Sec. 17, T. 22 S., R. 10 E., 82.50 acres, application of George T. Sly, Jr., of Lapine, Oregon; List 6-754. The N 1/2 of SW 1/4 of NE 1/4, the N 1/2 of S 1/2 of SW 1/4 of NE 1/4, the SW 1/4 of SE 1/4 of SW 1/4 of NE 1/4, the S 1/2 of NW 1/4 of SE 1/4, the S 1/2 of NW 1/4 of SE 1/4, Sec. 3, T. 22 S., R. 10 E., 87.50 acres, except a strip 30 feet wide along the west side of the SW 1/4 of NE 1/4, and the NW 1/4 of NW 1/4 of NE 1/4 of SW 1/4, Sec. 3, the net area being 86.36 acres, application of Waldemar Christensen, of Lapine, Oregon; List 6-755. Approved December 9, 1912. S. V. Prouditt, Assistant Commissioner of the General Land Office. 42-45

Every Day in the Year
Through Train to Portland
LEAVES BEND 6:30 A. M.
ARRIVES PORTLAND 5:30 P. M.

OREGON TRUNK RY.
CENTRAL OREGON LINE
DIRECT CONNECTIONS
FOR
LIMITED TRAINS
TO
Seattle Tacoma Spokane
Minneapolis St. Paul Chicago
Denver Omaha St. Louis
Kansas City

AND ALL POINTS EAST AND SOUTH, via the North Bank Road, Northern Pacific and Great Northern Railways. Fares, schedules and details supplied on request.
W. E. COMAN, Gen. Frt. & Pass. Agt. J. H. CORBETT, Agent, Bend.

The Bend Bulletin,
Bend, Ore.

Gentlemen:
Please discontinue our advertisement for the present. We are receiving more orders than we can fill, and want to catch up before we go after more.

Very truly yours,
BEND MILLING & WAREHOUSE CO.
C. I. Bozell, Mgr.

Selling Agents for
Aubrey Heights

The most beautiful residence property in Bend. Only 6 to 8 blocks from business center on easy terms.

Fire, Accident and Liability Insurance.
Surety Bonds.
All classes of Real Estate.

J. A. EASTES
Oregon Street.

Under New Management.

THE PILOT BUTTE INN
BEND'S LEADING HOTEL

Is now in charge of J. F. Taggart
First Class Service and the Comfort of Guests is Our Motto.
FREE AUTO Between Hotel and Depot.

Roofing of all kinds. Repairing promptly done.

J. A. MacCLOSKEY
TINNING AND
FURNACE CONTRACTOR

Guttering, Spouting, Cornices and Skylights.

We Deliver the Goods

BUS AND DRAY LINE
LIGHT AND HEAVY LIVERY.

Hay, Barley, Oats, Wheat and Bran at lowest prices.
The Largest Barn in Central Oregon.

WENANDY LIVERY CO.
Bend, Oregon.
J. H. WENANDY LON L. FOX