

THE OPENING LINE

TO

THE GREAT DOMAIN

OF

Central Oregon

IS THE

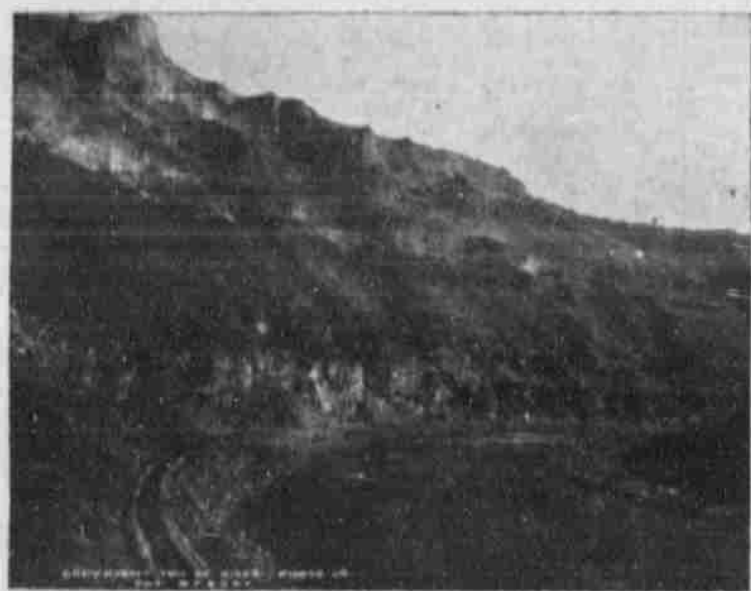


Oregon Trunk Ry.

Fast Passenger and Freight Service Between

CENTRAL OREGON POINTS and

Portland, Spokane, Minneapolis, St. Paul, Chicago, St. Louis and East



DESCHUTES RIVER CANYON—OREGON TRUNK RAILWAY

In Connection With the
Great Northern Ry.
and
Northern Pacific Ry.



COLUMBIA RIVER—THE NORTH BANK ROAD

Through their Immigration and Passenger Departments these railways are presenting to the attention of farmers, investors and others in the Central and Eastern States the opportunities open in the vast, undeveloped districts of Central Oregon. Correspondence is invited and information furnished with this in view. Low excursion fares permit personal investigations.

A NEW BOOK ABOUT CENTRAL OREGON

This illustrated book of fifty pages gives a conservative statement of the resources, advantages and conditions of the great, undeveloped interior portion of Oregon, with a large map. It will be forwarded free on receipt of request.

J. H. CORBETT, Agent, Oregon Trunk Ry.,
BEND, OREGON.

W. E. COMAN, General Freight and Passenger Agent, S. P. & S. and O. T. Rys.,
PORTLAND, OREGON



Transcontinental Routes of The Oregon Trunk Ry., The North Bank Road and Affiliated Lines