

## Removing the Air From the Bubble

CREDITS are gradually being tightened up over the country in order to squeeze out some of the rampant speculation and extravagant expenditure which has been going on. That need not affect the man or business with legitimate needs, but it is a forewarning to keep within the bounds of reasonable operations. It should also be a hint to the people to save harder. Both conditions argue for bigger accounts here at the U. S. National.



**UNITED STATES NATIONAL BANK**  
OF NEWBERG, OREGON

## Best Values in Newberg at VanBlaricom's Grocery Store

BECAUSE

WE have the BEST in staple groceries.  
WE have the LARGEST assortment of fancy groceries.  
WE have the FRESHEST in green vegetables.  
WE have the LOWEST prices.

By way of SUBSTANTIAL REDUCTIONS from our regular LOW PRICES we offer for July 2 and 3 the following SPECIALS:

Folger's Golden Gate Coffee	4 lb. tin given with each 2 1/2 lb. tin.	
Folger's Golden Gate Coffee	1 lb. tin given with each 5 lb. tin.	
Brooms		\$.49
30c Pork and Beans		.19
15c Salmon		.10
20c size Sour Kraut		.10
15c size Pumpkin		.10
15c size Rice and Milk		.10
15c size Ripe Olives		.10
25c size Ripe Olives		.15
25c size Cream of Barley		.10
10c size Gold Dust		.05
40c size Grated Pineapple		.25
3 pounds Coffee		1.00
10 pounds Macaroni		1.00
20 pounds Onions		.50

**VanBlaricom & Company**  
The Store of QUALITY  
The Store of SERVICE and ACCOMMODATION

### FROM OVER THE STATE

**Bend**—Though it looks exactly like rotten cordwood and would be passed upon as valueless by a casual observer, a class of timber that has been moving out of here in car load lots brings a high price for a peculiar purpose. The timber in question is seasoned—too well seasoned, it appears—juniper, on its way to Japan to be made into pencils. The rotter the core of the log is, the softer is the surrounding wood, and the better pencil stock it makes, so the Japanese manufacturers like it that way. Though the use of weathered juniper for pencil stock is still in its experimental stages, large quantities of this wood have been moving out of here for shipment to the flowery kingdom on steamships running from Portland to the Orient.

**Tillamook**—The dairy industry in this section is seriously hampered by the lack of sufficient gasoline to run the milking machines. Cows can not be milked by hand because of the scarcity of labor.

**Marshfield**—A new market for Port Orford cedar has developed in the east, where the resourceful Japanese manufacturers convert it into pencils. This timber in eight-foot bolts is moving out of here in considerable quantities by rail and water, destined for Japan.

**Klamath Falls**—The Klamath Mint Company, recently incorporated here for \$200,000, has purchased 2,500 acres of marsh land on Upper Klamath Lake, and a portion of this tract will be planted to spearmint and peppermint this year. Experiments have shown that the Oregon variety of mint is unusually suitable for distillation because of its high menthol content. It is claimed that this will be the largest single tract devoted to mint growing in the United States.

**Portland**—The Peninsula Lumber mill here, now producing 100,000,000 feet of lumber a year, will just double its capacity when expansion already in progress is completed. Three thousand lineal feet of bulk-heading 40 feet wide now surround a tract that is being filled by a suction dredge. Upon this site will be built a complete new unit comprising a saw mill, planing mill, dry kiln and dock for ocean going vessels.

A notorious white elephant here in the shape of the Monarch Lumber Mill has been harnessed and put to work. This huge mill, which is

capable of producing 31,250 feet of lumber an hour, operated only a short time after it was finished, was entangled in litigation and has lain idle ever since. It has now been taken over by Lester W. David, an enterprising lumberman, is furnishing employment for 175 men, and is producing a lot of good lumber at a good profit.

A fool-proof davit, by means of which life-boats can be lowered from a sinking ship under the con-

trol of one man instead of several, is to be manufactured at a plant to be built here or at Astoria by the United States Marine Equipment Company. The device has been patented, and the company, which was recently incorporated, plans to invade the marine market on every seaboard in the country.

### HOUSEHOLD HINTS

Cocoa is the better for a tiny bit of broken vanilla bean in the pot.

A pinch of soda added to fruit when stewing takes off the acidity.

A pot of beef extract is a handy thing to have on hand for soups. never let garbage stand uncovered for more than an hour.

Cheese dishes should be the chief of the meal at which they are served.

White vaseline is excellent for polishing patent leather shoes.

Never put a tea pot away with the lid on or it will smell musty.

When ironing, rub irons with a small piece of fine sand paper and there will be no likelihood of their sticking.

Use kerosene in carpet sweeper to keep clean and brighten carpets. Keep a clean hat pin handy to try cakes, etc.

A long wooden handle put on a

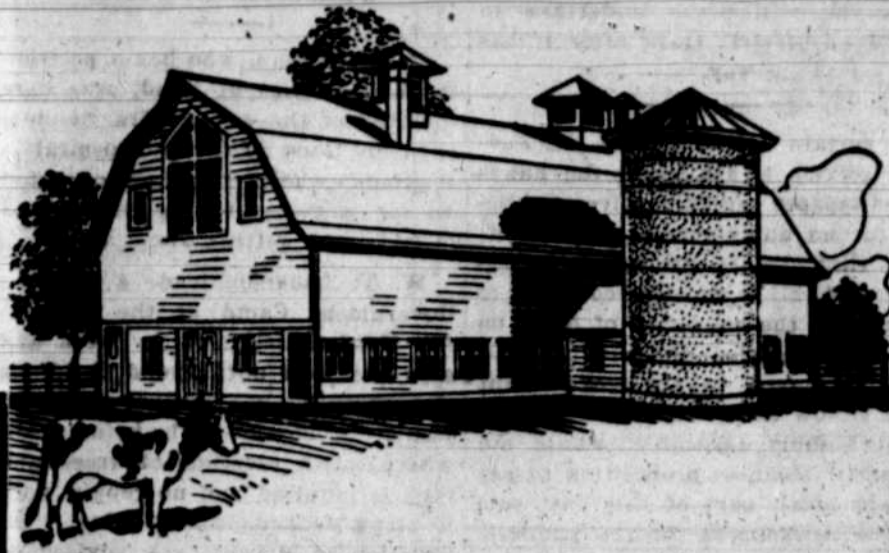
steel fork is most useful in frying doughnuts, etc.

To shine polished steel, rub over with a well-greased cloth and then use a dry one to remove grease.

To take the bitter taste from tea after inadvertently boiling it, pour

small amount of cold water into it at once.

Save the wooden trays lard comes in to put some "left-over" in, to save soiling a dish. They are also nice to put salad in to take for a lunch.



## Buy the Best Shingles

the market offers if you want the worth of your money. Cheap grades mean early repairs, and frequent repairs cost heavily in the long run.

### Come and See Us

when you are ready to buy shingles—whether you want them in asbestos, metal, slate or wood. As experts, we will honestly tell you what material is most suitable for your purpose and show you how to buy economically.

Satisfaction in Price and Quality  
Guaranteed to All Buyers

## C. K. Spaulding Logging Co.

The Home of Good Building Materials

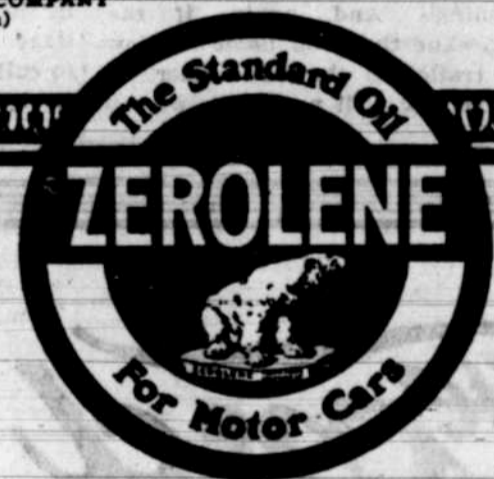


## Consistent High Quality

The resources, experience, knowledge and equipment of the Standard Oil Company combine to make Zerolene. They insure a product of uniform high-quality. Use Zerolene for the Correct Lubrication of your automobile, truck or tractor.

STANDARD OIL COMPANY  
(California)

A grade for each type of engine



V. D. MILLER, Special Agent Standard Oil Co. Newberg.

Newberg Lodge No. 104 A. F. & A. M. Regular meeting Second and Fourth Thursday evening of each month. Visiting brothers always welcome. Frank Knapp, Secretary. Wm. Clement, W. M.

## Consider This

I have had 16 years experience besides three years in a piano factory, making me thoroughly competent to do Tuning, Regulating or REPAIRING OF PIANOS. Let me put your Piano in first class condition, and after this first cost I will keep it in tune at a cost of \$2.00, providing you have it tuned every six months. This applies to anyone within 15 miles of Newberg.

Leon B. Lewis  
Piano Tuner  
NEWBERG, OREGON  
P. O. Box 276 Phone Blue 211

## Drs. Gochnour & Daniels

CHIROPRACTORS  
Massage, Hydro-therapy and Electric Treatments

STEAM AND ELECTRIC BATHS

Phone Black 40 for appointment  
110 North School street, first door north of Yamhill Electric Office

## Kendrick Grocery

FRESH, CLEAN STOCK

Best the Market Affords

Fruits and Vegetables in season

Country Produce Bought and Sold  
Cash Paid for Poultry and Eggs  
Hannings, old Stand

Corner First and Center Sts

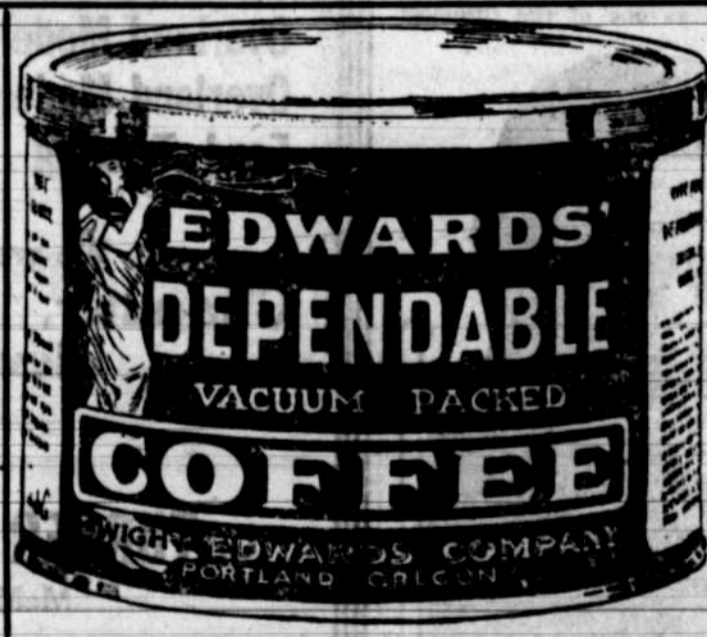
## MONUMENTS



All Kinds Low Prices Satisfaction

G. M. KEILING

Box 402 Phone Black 146 Newberg, Ore



Order it today  
Your money back if it doesn't satisfy you.

You Are Entitled To Good Coffee

EDWARDS

ROASTERS ALSO OF COUNTRY CLUB COFFEE  
EDWARDS DEPENDABLE COFFEE  
Tastes Better—Goes Further"

DWIGHT EDWARDS COMPANY, PORTLAND, OREGON.

## EVANS PLUMBING SHOP

Removed to 311 First St., Duncan Building, first door west of Spaulding Logging Co. office. Phone Blue 195. We will be glad to meet all our old friends and hope to make many new ones.

E. L. EVANS -:- C. A. EVANS

Before You Dispose of Your

# WOOL

GET A PRICE FROM THE

## Santiam Woolen Mills

Exclusive Manufacturers of

HIGH-GRADE WOOLEN BLANKETS, WOOL BATTS, WOOL COMFORTER AND WOOL MATTRESSES

Sell Direct to the Manufacturer

105 Union Ave. N.  
Portland, Oregon

Mills at  
Stayton, Oregon

R. M. CALDWELL, Local Agent

Box 113, Newberg, Ore. Phone White 182