

It is Time for Saving

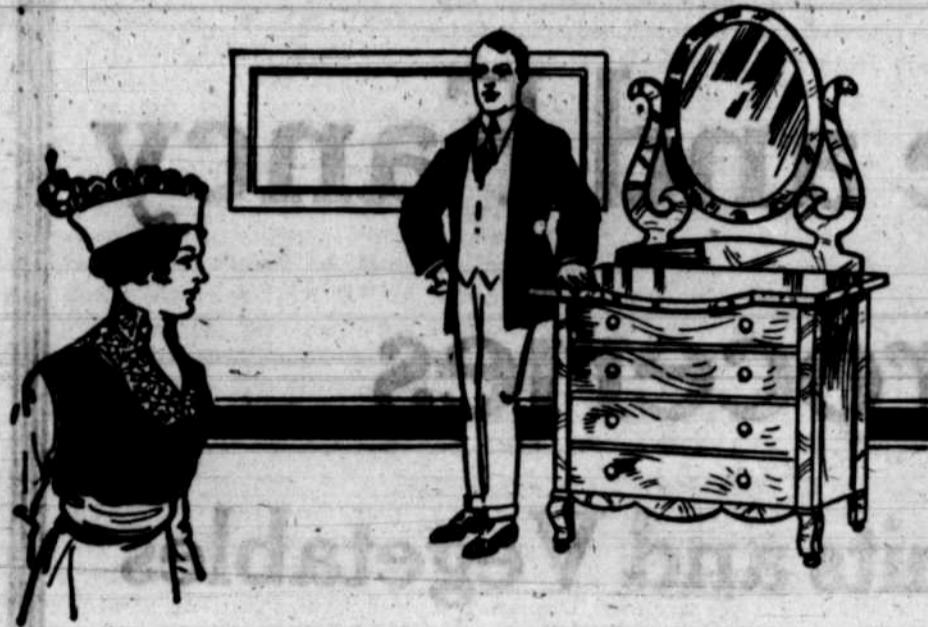
THE period of thoughtless spending and careless investment should be gotten over with as soon as possible.

And it is for each person and family to see that outgo be kept below income for their own individual welfare.



We need your deposits here at the U. S. National to make this bank grow bigger. But YOU need OUR service EVEN MORE.

UNITED STATES NATIONAL BANK
OF NEWBERG, OREGON



Everything in Its Place

A big, roomy dresser or chiffonier, in which you can keep ample supplies of clothing and toilet accessories for immediate needs, will contribute much to your comfort and convenience and save oodles of time and temper.

Our Bedroom Pieces

are the latest in design, color and finish, and they are made so carefully they will serve a lifetime. Come and see them and get prices.

Our Word Is a Guaranty of Honest Values

W. W. Hollingsworth Co
Newberg, Oregon

Mind Working One Way.

Hopelessly imbecile, an inmate of a Devonshire (England) poor-law home for the insane possesses a wonderful memory. If the number of any psalm be mentioned this man can at once recite the whole psalm. Given the number of a hymn, he can repeat all the verses. But, more wonderful still, if he be given a date in any year, he can tell the day of the week on which that date occurred.

Here is a poser for mind experts. This poor man's brain lacks all the qualities which make for sanity, save one. The faculty of memory may have been normal at the man's birth, and constant practice may have marvelously developed it. Whatever the explanation may be, the marvel is that a mind capable of such a tremendous feat did not grow into an organ of reason.

First Bolsheviki Republic.

A writer in a French newspaper has discovered that a bolshevik republic existed in China seventy years ago, at Chetuga, in Manchuria. It was founded by conscript miners who had been sent by the Chinese Emperor to dig for gold. These men, treated as slaves, deserted and established a Communist republic in the mountains. Their example was followed by an entirely different class, a race of brigands, who, however, continued to "spoil the Egyptians" while leaving their communist neighbors unmolested. Their menfolk are now policing Manchuria on behalf of Japan, which adopted the plan of setting thieves to catch thieves, and in return for their services protected them from Chinese and Russian persecutors.

The Parent's Assistant.

The son of Mr. Newly-Rich wanted to be an auctioneer. His father had intended him for a learned profession, but promised to think it over. Meeting a friend, Mr. Risen-from-the-Ranks, he confided to him the dilemma, and asked for his view of auctioneering as a calling. "Well," said this authority on short cuts to wealth, "it's like this: An auctioneer order 'ave an 'ammer and 'n 'ead, an' the 'ammer ain't a baton o' use without the 'ead."

See the Graphic for all the city and county news.

NEWBERG CHURCH SERVICES

Friends

Sunday school at 10 a. m., Ass Sutton, superintendent.
Morning worship at 11 o'clock.
C. E. at 6:30 p. m.
Evening meeting at 7:30.
Fred E. Carter, Pastor

Christian

Bible school 10 a. m., Ethel Kieler, superintendent.
Preaching services, 11 a. m. and 7:30 p. m.
Y. P. S. C. E. at 6:30.
The public is cordially invited to all the services.
K. H. Sickafoose, Pastor.

Baptist

Sunday school at 10 o'clock.
Sunday school at 9:45 a. m.
B. Y. P. U. at 6:30 p. m.
All are invited to these services.

Seventh-Day Adventist

Saturday: Sabbath school at 10:30 a. m., preaching service at 11:45.
Wednesday: Prayer meeting at 8 p. m.

Church of God

Sunday school at 10 a. m.
Preaching at 11 a. m. and 7:30
Prayer and testimony meeting Wednesday, 7:30 p. m.

Presbyterian

9:45 A. M. Sunday school
11:00 A. M. Morning worship
7:00 P. M. Y. P. S. C. E.
8:00 P. M. Evening worship
Wednesday, 7:45 P. M. Bible hour
All non-church-goers and all inclined to Presbyterian truth and ways, urgently invited.

Church of the Brethren

Sunday school at 10 a. m.
Preaching service at 11 a. m.

Young People's meeting 7:00
Prayer meeting Wednesday evening at 8 o'clock.
A cordial invitation is extended to all to attend these services. Location—corner of Hancock and Washington streets.
John A. Reed,
David C. Glick,
Elders in Charge.

Wesleyan

Sunday school 9:45
Morning service 11:00
Young People's Meeting at 7 p. m.
Evening service 8:00
Wed. night prayer meeting 8:00

Methodist

Preaching every Sunday at the usual hours.
Preaching services both morning and evening, 11 a. m. 7:30 p. m.
Epworth League, 6:30 p. m.
Prayer meeting every Wednesday evening at 7:30 o'clock.
Chas. E. Gibson, Pastor.

Chelalem Center Church

Sunday school 10:00
Preaching service 11:00
Christian Endeavor 7:00
Preaching service 8:00
Prayer meeting Thursday 8:00
Business meeting of the church on last Thursday evening of month.
Paul H. Lewis, Pastor.

Friends Church, Springbrook

Sunday school 10:00
Morning worship 11:00
Christian Endeavor 6:30
Worship 7:30
Prayer meeting Wednesday 7:30
Carl F. Miller, Pastor.

Dundee M. E. Church

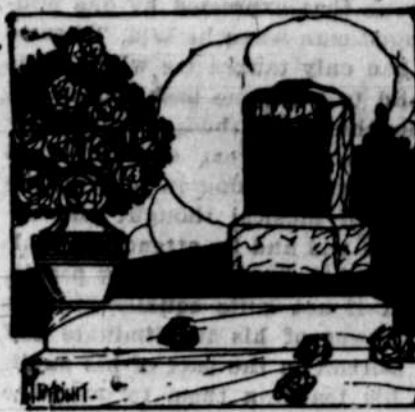
Sunday school at 10 a. m.
Preaching at 11 a. m.
Evening service at 7:30 p. m.
Rev. J. H. Gillespie, Pastor.

Shiloh Relief Corps, No. 28

Meetings held 2nd and 4th Thursday of each month at 2:30 p. m., in L. O. O. F. hall, corner of First and Meridian streets.
Frances Woodruff, President.
Emma L. Snow, Secretary.

The Newberg Graphic does fine job printing.

MONUMENTS



All Kinds Low Prices Satisfaction

Q. M. KEILING

Box 402 Phone Black 146 Newberg Ore

EVANS PLUMBING SHOP

Removed to 311 First St., Duncan Building, first door west of Spaulding Logging Co. office. Phone Blue 195. We will be glad to meet all our old friends and hope to make many new ones.

E. L. EVANS -:- C. A. EVANS

Newberg Steam Laundry

Phone White 112

CALL US

Before You Dispose of Your

WOOL

GET A PRICE FROM THE

Santiam Woolen Mills

Exclusive Manufacturers of

HIGH-GRADE WOOLEN BLANKETS, WOOL BATS, WOOL COMFORTER AND WOOL MATTRESSES

Sell Direct to the Manufacturer

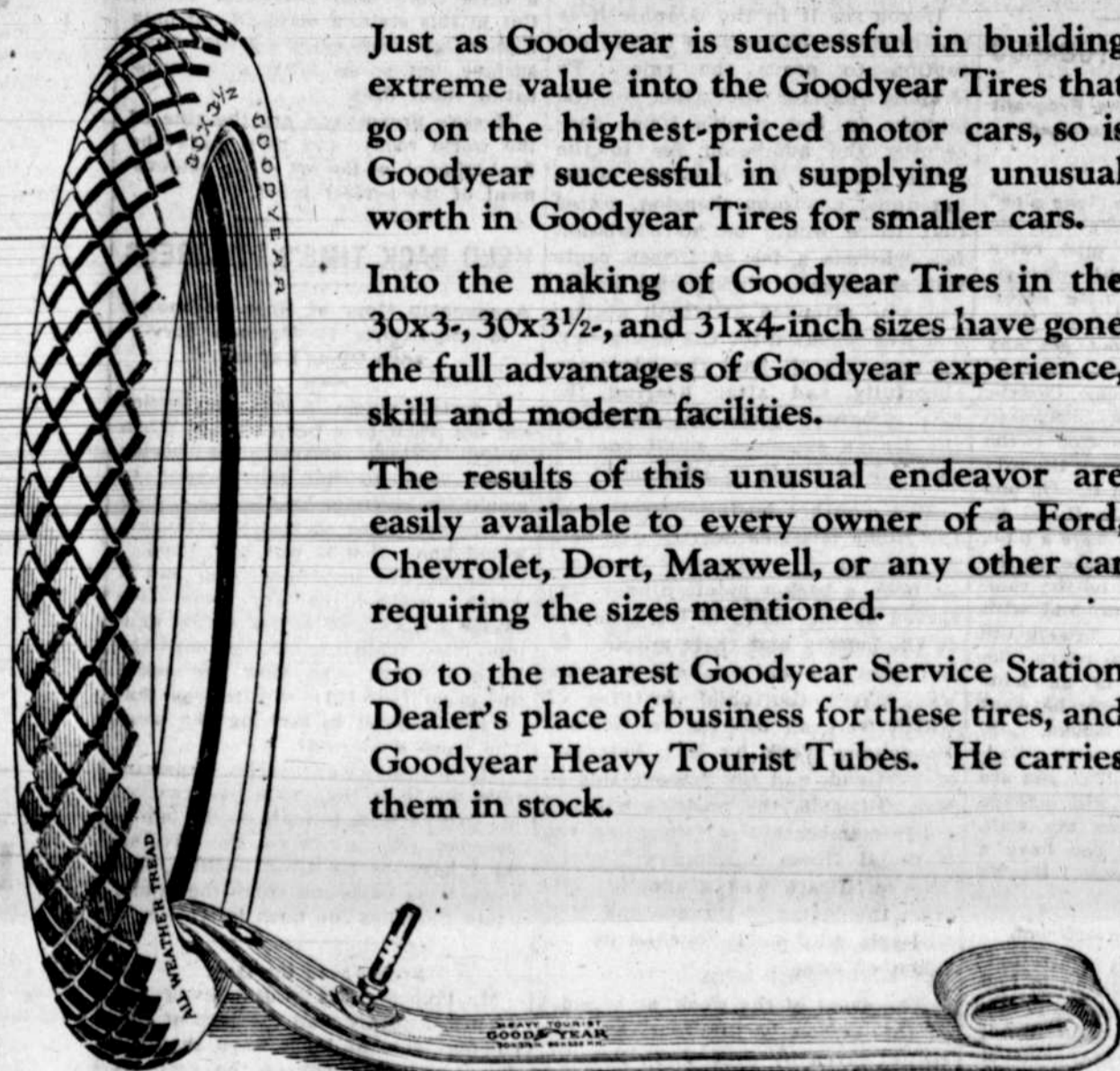
105 Union Ave. N.
Portland, Oregon

Mills at
Stayton, Oregon

R. M. CALDWELL, Local Agent

Box 113, Newberg, Ore. Phone White 182

Goodyear Advantages in Tires for the Smaller Cars



Just as Goodyear is successful in building extreme value into the Goodyear Tires that go on the highest-priced motor cars, so is Goodyear successful in supplying unusual worth in Goodyear Tires for smaller cars.

Into the making of Goodyear Tires in the 30x3-, 30x3½-, and 31x4-inch sizes have gone the full advantages of Goodyear experience, skill and modern facilities.

The results of this unusual endeavor are easily available to every owner of a Ford, Chevrolet, Dort, Maxwell, or any other car requiring the sizes mentioned.

Go to the nearest Goodyear Service Station Dealer's place of business for these tires, and Goodyear Heavy Tourist Tubes. He carries them in stock.

30x3½ Goodyear Double-Cure \$23.50
Fabric, All-Weather Tread

30x3½ Goodyear Single-Cure \$21.50
Fabric, Anti-Skid Tread

Goodyear Heavy Tourist Tubes are thick, strong tubes that reinforce casings properly. Why risk a good casing with a cheap tube? Goodyear Heavy Tourist Tubes cost little more than tubes of less merit. 30x3½ size in water—\$4.50 proof bag

GOODYEAR