

## "Easter Millinery"

Now is the time to  
buy your  
New Easter Bonnet

Come early and select your hat from our stock, in the latest shape and colors. We have large and small shapes in celloplane braided ornaments, flowers, ribbon and fruit novelties of all kinds.

Our hats are of the best workmanship, made from the latest materials. Come in and buy your hat, where the style and price is right.

### Gridley Millinery Shop

706 FIRST STREET, (BETWEEN COLLEGE AND EDWARDS STS.)

Shiloh Relief Corps, No. 28  
Meetings held 2nd and 4th Thurs-  
day of each month at 2:30 p. m., in  
I. O. O. F. hall, corner of First and  
Meridian streets.

Frances Woodruff, President,  
Emma L. Snow, Secretary.

Newberg Lodge No. 104 A.  
F. & A. M. Regular meeting  
Second and Fourth Thurs-  
day evening of each month.

Visiting brothers always welcome.  
Wm. Clemmens, W. M.  
Frank Knapp, Secretary.

### WOMEN TAKING TO MONOCLE

Single Eyeglass Rapidly Becoming  
Popular Among the Smart Set in  
English Society.

Two fashionably dressed women  
were seen in Regent street the other  
day, each wearing a monocle screwed  
into the right eye. According to a  
member of a well-known firm of opti-  
cians the wearing of the single eye-  
glass is becoming popular among wom-  
en in society.

"We have had several orders for  
monocles from women recently," he  
said. "In every case there was genu-  
ine trouble with one eye only. Rather  
than wear pince-nez fitted with one  
plain glass for the good eye, they pre-  
ferred monocles as being the least dis-  
figurement. They all chose those fit-  
ted with gold rims as being the most  
comfortable and the easiest to keep  
in the eye. They take cords also, for  
it requires the confidence born of long  
experience to wear a monocle without  
a guard.

"After all, why should the monocle  
be a masculine glass only? It is a  
mistake for some people to regard it  
as only a facial decoration for dukes  
and politicians. Where only one eye  
is defective a superfluous glass is a  
nuisance.

The monocle lends distinction to the  
right kind of face. It best suits peo-  
ple with sharp features. It is about  
time that the monocle came into its  
own."—London Globe.

### DRAW MILLIONS FROM LAND

Immense Wealth Accruing to Fortu-  
nate Property Owners in the City  
of London, England.

The most elaborate and the largest  
map in the world is the "valuation"  
map of the city of London, which was  
some twenty years in the making, and  
which is more than thirty feet wide  
and twenty feet from top to bottom.  
The map is of the metropolitan dis-  
trict of London, embracing an area of  
115 square miles, and every house,  
shop and piece of property in that  
area is shown. Nearly 40,000 separate  
estates are listed.

Some curious and interesting facts  
about London landlords are shown by  
the great map. The wealthiest estate  
is that of the duke of Westminster,  
400 acres, with a rent roll of \$15,000,  
000 per year. This is not by any means  
the largest estate in London, however,  
though its location makes it the most  
valuable. In South London is one es-  
tate which covers four square miles,  
and there are several exceeding two  
square miles. Lord Howard de Walden's  
estate brings in rents to the amount  
of \$10,000,000 per annum, and the  
250 acres belonging to the duke of  
Bedford rent for \$10,500,000 per year.  
Lord Northampton, the duke of Nor-  
folk, Lord Portman and Earl Cadogan  
each own around 200 acres of city  
property, and their rents run from  
about \$5,000,000 to \$8,000,000 per year  
each. Not a bad idea to let a city like  
London grow up around one's farm.

### Insurance Crusade's Myster.

The musket said to have been given  
to Alexander Selkirk when he was put  
ashore on the island of Juan Fernan-  
dez, 400 miles off the Chilean coast,  
has been going the rounds of British  
museums.

It was Selkirk's adventures upon  
which was based De Foe's famous  
story, "Robinson Crusoe." The musket  
is inscribed with the name of "A. Sel-  
kirk Largo, 1771." It was purchased  
by Randolph Berens for \$6.25, but the  
owner has insured it for \$10,000.

Selkirk owned a tavern near Clap-  
ham, England, but died in 1723 at sea  
as a lieutenant aboard a naval vessel.

## PROTESTANT PASTORS IN NEED OF RELIEF

Survey By Interchurch World  
Movement Reveals Pul-  
pit's Poverty.

\$1242 IS HIGH AVERAGE SALARY

Local County Conference in April Will  
Show Necessity for Clinics and  
Homes for Aged and Infirm.

A large portion of the funds to be  
raised in the United Simultaneous  
Campaign of the Protestant denomina-  
tions associated with the Interchurch  
World Movement will be used for  
American Ministerial support and re-  
lief. It is greatly needed, according  
to leaders of the Interchurch Move-  
ment, who early in April are to hold  
the conference in this county.

As a result of the campaign now  
being made by the Interchurch World  
Movement the combined Protestant  
churches of America will provide many  
more hospitals, clinics and homes for  
the aged and infirm. An interesting  
feature of these Protestant hospitals  
will be free treatment for ministers,  
as recent surveys made by the Inter-  
church organization have made the  
need for special dispensations very  
obvious.

The following startling facts were  
divulged as to the average salaries in  
the various denominations. Starting  
with the highest, the average for Epis-  
copal ministers is \$1,242; the average  
for Presbyterian (North), \$1,177; for  
the United Presbyterians, \$1,096; for  
the Reformed Church (Dutch), \$1,170;  
for the Methodist Episcopal (North),  
\$1,176; Congregational, \$1,042, and for  
the Baptists (Northern), \$950.

With government experts announc-  
ing that \$1,500 is the lowest salary  
upon which a family can be decently  
maintained and suggesting budgets for  
none lower, ministers have a discour-  
aging outlook. Such things as hospi-  
tal bills are almost impossible to meet,  
and yet every normal family has some  
illness in its midst every year. Ac-  
cordingly the Interchurch Movement,  
while on its way to obtain higher aver-  
ages in salaries, will assist by provid-  
ing free care in its institutions.

### About the Dead Sea.

Swimming in the Dead sea is re-  
freshing sport, but swimmers have to  
be careful not to get water into their  
eyes. In a ton of water from the Cas-  
pian sea there are 11 pounds of salt,  
in a ton from the Atlantic ocean there  
are 31 pounds, from the Mediterranean,  
85 pounds; but in a ton of the Dead  
sea there are 187 pounds. Contrary to  
a prevailing belief, there are plains  
on the shores of the Dead sea that are  
so fertile and well watered that as  
soon as one crop is harvested another  
can be planted; but as a whole, the  
basin is a dreary region.—Youth's  
Companion.

### Girl Studies to Be Blacksmith.

A girl junior at the University of  
Washington is learning the black-  
smith's trade. Jazz is no lure to her,  
for the anvil chimes fills her ear and  
she looks forward to owning and oper-  
ating a forge and a farm of her own.  
The desire to master blacksmithing  
arose from her resolve to be a farmer,  
and as such to know something of ma-  
chinery. So she studies the fashion-  
ing of bolts and bars and the pointing  
of plowshares.

### Believed Victims of Indians.

Three skeletons, believed to be those  
of early American settlers were un-  
earthed at Kennepunkport, Me., by  
workmen leveling some land near an  
old fort erected during the war of  
1812. Two apparently were victims of  
Indian massacres or wars. Embedded  
in the skull of one of the skeletons  
was an Indian arrow. The tip of the  
skull of the second was chipped off  
cleanly, as if done by a tomahawk  
held in a well-trained hand. The third  
skeleton was that of a man seven feet  
tall. It is believed that the bodies  
were buried in an old cemetery on this  
spot, and that the graves were cov-  
ered over by earth thrown up when  
the fort excavations were being made.

## FOUND PEBBLE WAS DIAMOND

Irishman's Belief That Pretty Stone  
Was Valuable Led to Working of  
South African Fields.

The discovery of African diamonds  
is a romance of sleeping for years  
on wealth beyond the dreams of avar-  
ice. In 1867 John O'Reilly was on his  
way from the interior, and stopped for  
the night at the house of a Boer named  
Van Nickerck. He saw the children  
playing on the floor with some pretty  
pebbles they had picked up, and  
O'Reilly said: "These might be dia-  
monds!" He had one of the pebbles in  
his hand, and the Boer said it was no  
diamond, that there were lots on the  
farm, and he might have it and wel-  
come.

O'Reilly said he would take it to  
Cape Town, and if it proved of value  
he would give his host half the profits.  
On his long journey he stopped at  
Colesburg at the hotel, and showed the  
men he met his stone, and scratched  
glass with it. The fellows laughed and  
scratched glass with their gun flints,  
and threw the bright pebble out of the  
window. But O'Reilly recovered it and  
got it to an expert, who announced  
that it was in truth a diamond of  
22.14 carats.

O'Reilly, like the honest Irishman he  
was, fairly divided the \$500 he sold  
his diamond for with Nickerck when  
he went up-country again, and the  
Boer remembered that he had seen an  
immense stone of the same kind in  
the hands of a Kaffir witch doctor. He  
found the fetish-man, gave him 500  
sheep, a number of horses and nearly  
all he possessed for the stone, and sold  
it the next day for \$56,000. This was  
the famous Star of South Africa.

## PROUD OF HISTORIC EDIFICE

British Nation Has Right to Exult in  
Glories That Surround Ancient  
Westminster Abbey.

Westminster hall, next to the  
Tower and Westminster abbey, is the  
most historic edifice in London. Ad-  
jacent to the house of commons, it  
dates back over 800 years, although  
Richard II was responsible for its  
present glories. He it was who, in  
1397, had the hall rebuilt, and added  
the grand oak roof which is rightly de-  
scribed as "one of the finest feats of  
carpentry extant," and which, with  
judicious patching from old ship's tim-  
ber, in 1820, has lasted to this day.

Probably the largest hall in the  
world unsupported by pillars, the his-  
torical associations of Westminster  
hall, are full of interest. Tablets on  
the stairs and in the middle of the  
hall mark the spots where Charles I  
and the earl of Stratford stood their  
trials, and another tablet records the  
lying in state of King Edward.

Here successively the duke of Som-  
erset and his rival, the duke of North-  
umberland, and, a little later, the  
duke of Norfolk, were all tried and  
condemned. The hall was also the  
scene of the seven years' trial of War-  
ren Hastings and of the proclama-  
tion of Cromwell as lord protector.  
A few years later his head was  
brought from Westminster abbey and  
exposed on the southern gate.

Westminster hall also has political  
and legal associations, for some of  
the earliest parliaments assembled  
there, while as late as 1882 the law  
courts were held within and around.

### Great Preacher's Humor.

The wit of Henry Ward Beecher  
was a large element of his popularity.  
The Brooklyn postmaster sent him for-  
mal notice that a letter had been re-  
turned to him from the dead letter  
office and got this reply: Colonel Mc-  
Leer—Dear Sir: Your notice that a  
letter of mine was dead and subject to  
my order is before me. We must all  
die. And though the premature de-  
cease of my poor letter should excite a  
proper sympathy (and it does), yet I  
am greatly sustained under the af-  
fliction. What was the date of its  
death? Of what did it die? Had it  
in its last hours proper attention, and  
such consolation as befits the melan-  
choly occasion? Will you kindly see  
to its funeral? I am strongly inclined  
to cremation. May I ask if any other  
letters of mine are sick, dangerously  
sick? If any depart this life hereafter,  
don't notify me until after the funeral.  
Affectionately yours, Henry Ward  
Beecher.—Exchange.

### Trade Signs Disappearing.

Many of the familiar trade signs  
used to advertise business enterprises  
have been displayed by the flashing  
electric display. Among the old and  
commonplace signs to be discarded in  
the onward sweep of advertising pro-  
gress are the wooden Indian, which one  
time kept its silent, stolid vigil beside  
the door of the tobacconist. The sig-  
nificant boot that once was suspended  
over the shop of the repairer of boots  
and shoes is now of happy memory. So  
are the barber's pole, the anvil hang-  
ing above the entrance to the black-  
smith's shop, the horses' heads over  
the liveryman's doorway and others.

### "Scum" Was Valuable.

One of the biggest oil fields in  
America was for two generations oc-  
cupied by the buildings and fields of  
an ordinary farm, through which ran  
a creek which issued from the ground  
in a remote corner of the estate.  
The farmer had always been trou-  
bled with what he called the "scum,"  
and had put a plank across the little  
rivulet to keep it back. An oil pros-  
pector, after the farmer's death, found  
that the scum was petroleum, or min-  
eral oil, and that land became valu-  
able as if it had been a rich gold  
field.

## NU BONE CORSETS

ALSO BENDS EDGEWISE



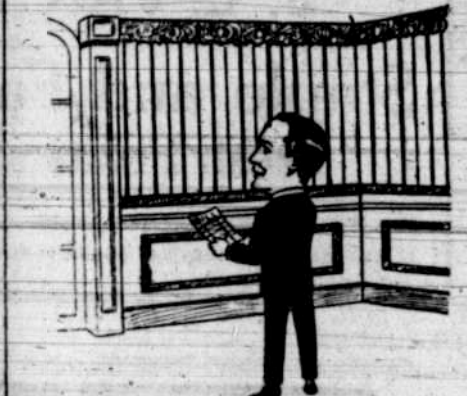
Supremely Fashionable, Delightfully  
Comfortable, Modestly Priced and  
Satisfaction Guaranteed, Non-Rust-  
able, Non-Breakable, Makes no Per-  
manent Bend. Appointments made  
by phone.

CORA E. DIEDERICKS  
Phone White 200 Newberg, Ore.

## CHASE & LINTON GRAVEL COMPANY

All kinds of gravel for con-  
crete work, cement blocks,  
or wood work furnished on  
short notice.

Telephone White 85



### SOME MEN ARE AS FUSSY

as their wives, mothers and daugh-  
ters over the effect of wall papers in  
their rooms. It is our business to  
please the most critical and fastid-  
ious tastes of men and women. With  
our wide selection of papers and  
combinations and expert hanging  
methods, you cannot fail to be per-  
fectly satisfied.

J. P. SOPER,  
804 East First St.  
Phone Black 220 Newberg

## INSURANCE

Get the best Fire Insurance for less money.  
We can furnish it—Let us prove it  
Write, see or phone  
J. L. & C. J. Hoskins, Newberg, Ore

## Cut the cost of raising your calves



## Blatchford's CALF MEAL

BY raising your calves on  
Blatchford's Calf Meal  
you can save both milk and  
money. You can save milk  
because every pound of  
Blatchford's Calf Meal  
makes a full gallon of pure,  
rich milk-substitute—a milk-  
substitute which contains all  
the nutritive and growth-  
producing properties the calf  
requires. You can save  
money because at present  
market prices a gallon of  
milk sells for three to four  
times the retail cost of a  
pound of calf meal.

We handle, recommend and  
guarantee it  
CHEHALEM VALLEY MILLS  
ZUMWALT'S FEED STORE



OUR IMPLEMENTS ARE STRONGLY BUILT, YET  
LIGHT RUNNING AND NOT HARD ON STOCK, THIS SAVES  
VALUABLE FEED.

COME IN AND LET US EXPLAIN OUR IMPLEMENTS  
TO YOU. WE ARE EXCLUSIVE AGENTS FOR MANY  
DESIRABLE MAKES.

OUR HARDWARE IS THE BEST; IT STANDS THE TEST

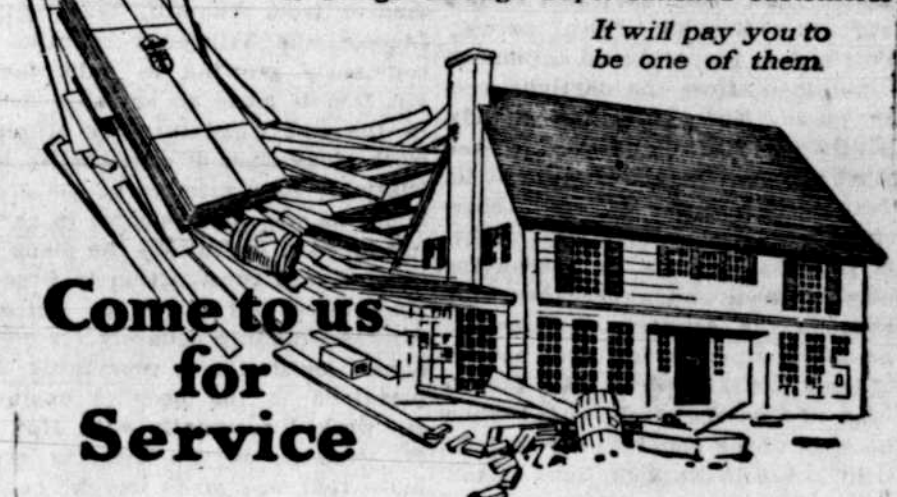
## Larkin-Prince Hardware Co

## More than just materials

When you let us supply your building  
needs you get a great deal more than just so  
many feet of lumber—bundles of shingles—  
pounds of nails—or panels of Beaver Board.

You get the benefit of our building  
material knowledge and experience in Service  
that helps you get the results you want at  
the right price. Service first in planning the  
work—more service in selecting proper ma-  
terials—speedy service in delivering the goods.

You pay for the materials. The service  
pays for itself in the larger volume of business  
it brings through super-satisfied customers.



## C. K. Spaulding Logging Co.

The Home of Good Building Materials

## Newberg Steam Laundry

Phone White 112

CALL US

## ITALIAN PRUNE TREES

Choice Stock in all Grades which we are Offering

At Wholesale Prices for a Limited Time Only

Also a general variety of other stock on hand, at our packing shed  
(7 blocks north of Post Office) including Grafted Walnuts, Filberts,  
Apples, Pears, Cherries, Peaches, Small Fruits, Giant Rhubarb, etc.  
Those who delay in buying early will be disappointed as there is a  
big shortage in all varieties of stock this season.

## LaFAYETTE NURSERY CO.,

LaFAYETTE, OREGON