

# You Don't Need a Wife



any of you young men,  
to take care of the  
clothes that you buy at  
our store.  
They're made to take  
care of themselves.

Silk sewn seams, the finest trimming materials (inside and outside), firmly sewed buttons—and all wool and worsted fabrics. The models have a distinctive style that is made permanent by many shape-holding devices.

THE PRICES ARE SURPRISINGLY REASONABLE

## \$12.00 TO \$20.00

# HODSON BROTHERS

The Clothiers and Furnishers

608 First Street, Newberg, Oregon

### WANTED AND FOR SALE

Remember "Charlie's Aunt" on the 28th and 29th.

FOR SALE—Jersey cow due to be fresh. Phone 50A 62.

FOR SALE—Six Chester White shoats. Dr. E. P. Dixon. 27

MONEY TO LOAN—See Atty. B. A. Kliks, McMinnville, Oregon.

For dental work see Dr. E. P. Dixon. 408½ First street. 26 tf

WANTED—40 or 50 sacks of seed potatoes. Call 6a16. 2tpd

WANTED—To rent rooms for light housekeeping. Inquire at this office. 1t.

Go to the Easter White Sale, Saturday for fine cakes, pies, bread, fruit and jellies.

Get your bonnets, aprons, white goods and fancy articles at the Easter White Sale.

Get our prices on building material before purchasing. THE CHAS. K. SPAULDING LOGGING CO.

An excellent program at the college next Tuesday, choruses, solos, duets, string trios. Don't miss it.

FOR SALE—Three acres on Wynoski Street. All kinds of berries and fruit. Good house and barn. JERRE O'BRIEN. 1t.

If you have well located land or a good business proposition for sale at reasonable price, write me at once enclosing self addressed stamped envelope for reply (owners only.) Address J. C. Ross, 816-2nd Ave So., Minneapolis, Minn. 24-4t.

I have two wheat farms in Morrow county, 7 miles from Lexington all ready for the plow. one 480 acres, one 240 acres to trade for small farms in Willamette Valley. Houses or lots in Portland to trade for small farms. Write or call on Fisher & Hillier, 305 Abington Bldg. Portland, Or.

The treat of the season "Charlie's Aunt."

Galvanized iron, chicken water fountains, at Alfred Wheeler's Tin and Plumbing shop. 1t.

FOR SALE—Dry slab wood at \$3.75 cash, per cord, sawed and delivered. WM. CRATER.

Hear the famous Pilgrim's Chorus on April 18, at the college.

Our cement is "Portland Cement" all the time. THE CHAS. K. SPAULDING LOGGING CO.

A unique line of spring and summer millinery at Miss Hutchen's store. Prices to suit. 1t.

FOR SALE—Full blood Plymouth rock eggs, \$1.00 per setting. Mrs. V. A. Vincent.

You will hear a fine concert in the college chapel Tuesday, April 18, 8:00 p.m. Ladies' Glee Club.

The college girls Glee Club will give their public concert on Tuesday evening. Admission 25c and 35c.

We have a few odd doors and windows which we are offering at reduced prices. THE CHAS. K. SPAULDING LOGGING CO.

FOR SALE—House and two lots on Fifth street. A bargain if sold at once. Phone, Black 125. 27 pd. W. C. DUNLAP.

Young hens, incubator chicks and Black and White Minorca eggs, \$1 per setting. W. P. Ulm, North Main Street. 1t pd.

Young man, 22 years old, 120 pounds, wants position. Anything, willing workman. Address E. Williams, 41 and Holgate streets, Portland. 1t pd.

Dr. E. P. Dixon, the dentist, is ready to do all kinds of dental work known to the dental profession. Office hours, 8 to 12 and 1 to 6. 26 tf

We are in the market for farm land which lies desirable for subdividing into small tracts. Write us what you have. Ralph Ackley Land Co., 605 Corbett Bldg., Portland, Oregon. 1t

Pasture for horses and cattle. Chehalem Valley \$1 per month, J. U. SMITH, Phone Black 65.

My German Coach stallion Pylos, also the Percheron stallion Troupier will be in Newberg the present season. Will arrive soon. Watch the paper for dates. J. W. HENRY.

FOR SALE—Dry slab wood at \$3.75 cash, per cord, sawed and delivered. WM. CRATER.

Hear the famous Pilgrim's Chorus on April 18, at the college.

Our cement is "Portland Cement" all the time. THE CHAS. K. SPAULDING LOGGING CO.

A unique line of spring and summer millinery at Miss Hutchen's store. Prices to suit. 1t.

FOR SALE—Full blood Plymouth rock eggs, \$1.00 per setting. Mrs. V. A. Vincent.

You will hear a fine concert in the college chapel Tuesday, April 18, 8:00 p.m. Ladies' Glee Club.

The college girls Glee Club will give their public concert on Tuesday evening. Admission 25c and 35c.

We have a few odd doors and windows which we are offering at reduced prices. THE CHAS. K. SPAULDING LOGGING CO.

FOR SALE—House and two lots on Fifth street. A bargain if sold at once. Phone, Black 125. 27 pd. W. C. DUNLAP.

Young hens, incubator chicks and Black and White Minorca eggs, \$1 per setting. W. P. Ulm, North Main Street. 1t pd.

Young man, 22 years old, 120 pounds, wants position. Anything, willing workman. Address E. Williams, 41 and Holgate streets, Portland. 1t pd.

Dr. E. P. Dixon, the dentist, is ready to do all kinds of dental work known to the dental profession. Office hours, 8 to 12 and 1 to 6. 26 tf

We are in the market for farm land which lies desirable for subdividing into small tracts. Write us what you have. Ralph Ackley Land Co., 605 Corbett Bldg., Portland, Oregon. 1t

FOR SALE—Dry slab wood at \$3.75 cash, per cord, sawed and delivered. WM. CRATER.

Hear the famous Pilgrim's Chorus on April 18, at the college.

Our cement is "Portland Cement" all the time. THE CHAS. K. SPAULDING LOGGING CO.

A unique line of spring and summer millinery at Miss Hutchen's store. Prices to suit. 1t.

FOR SALE—Full blood Plymouth rock eggs, \$1.00 per setting. Mrs. V. A. Vincent.

You will hear a fine concert in the college chapel Tuesday, April 18, 8:00 p.m. Ladies' Glee Club.

The college girls Glee Club will give their public concert on Tuesday evening. Admission 25c and 35c.

We have a few odd doors and windows which we are offering at reduced prices. THE CHAS. K. SPAULDING LOGGING CO.

FOR SALE—House and two lots on Fifth street. A bargain if sold at once. Phone, Black 125. 27 pd. W. C. DUNLAP.

Young hens, incubator chicks and Black and White Minorca eggs, \$1 per setting. W. P. Ulm, North Main Street. 1t pd.

Young man, 22 years old, 120 pounds, wants position. Anything, willing workman. Address E. Williams, 41 and Holgate streets, Portland. 1t pd.

Dr. E. P. Dixon, the dentist, is ready to do all kinds of dental work known to the dental profession. Office hours, 8 to 12 and 1 to 6. 26 tf

Pasture for horses and cattle. Chehalem Valley \$1 per month, J. U. SMITH, Phone Black 65.

My German Coach stallion Pylos, also the Percheron stallion Troupier will be in Newberg the present season. Will arrive soon. Watch the paper for dates. J. W. HENRY.

FOR SALE—Dry slab wood at \$3.75 cash, per cord, sawed and delivered. WM. CRATER.

Hear the famous Pilgrim's Chorus on April 18, at the college.

Our cement is "Portland Cement" all the time. THE CHAS. K. SPAULDING LOGGING CO.

A unique line of spring and summer millinery at Miss Hutchen's store. Prices to suit. 1t.

FOR SALE—Full blood Plymouth rock eggs, \$1.00 per setting. Mrs. V. A. Vincent.

You will hear a fine concert in the college chapel Tuesday, April 18, 8:00 p.m. Ladies' Glee Club.

The college girls Glee Club will give their public concert on Tuesday evening. Admission 25c and 35c.

We have a few odd doors and windows which we are offering at reduced prices. THE CHAS. K. SPAULDING LOGGING CO.

FOR SALE—House and two lots on Fifth street. A bargain if sold at once. Phone, Black 125. 27 pd. W. C. DUNLAP.

Young hens, incubator chicks and Black and White Minorca eggs, \$1 per setting. W. P. Ulm, North Main Street. 1t pd.

Young man, 22 years old, 120 pounds, wants position. Anything, willing workman. Address E. Williams, 41 and Holgate streets, Portland. 1t pd.

Dr. E. P. Dixon, the dentist, is ready to do all kinds of dental work known to the dental profession. Office hours, 8 to 12 and 1 to 6. 26 tf

We are in the market for farm land which lies desirable for subdividing into small tracts. Write us what you have. Ralph Ackley Land Co., 605 Corbett Bldg., Portland, Oregon. 1t

FOR SALE—Dry slab wood at \$3.75 cash, per cord, sawed and delivered. WM. CRATER.

Hear the famous Pilgrim's Chorus on April 18, at the college.

Our cement is "Portland Cement" all the time. THE CHAS. K. SPAULDING LOGGING CO.

A unique line of spring and summer millinery at Miss Hutchen's store. Prices to suit. 1t.

FOR SALE—Full blood Plymouth rock eggs, \$1.00 per setting. Mrs. V. A. Vincent.

You will hear a fine concert in the college chapel Tuesday, April 18, 8:00 p.m. Ladies' Glee Club.

The college girls Glee Club will give their public concert on Tuesday evening. Admission 25c and 35c.

We have a few odd doors and windows which we are offering at reduced prices. THE CHAS. K. SPAULDING LOGGING CO.

FOR SALE—House and two lots on Fifth street. A bargain if sold at once. Phone, Black 125. 27 pd. W. C. DUNLAP.

Young hens, incubator chicks and Black and White Minorca eggs, \$1 per setting. W. P. Ulm, North Main Street. 1t pd.

Young man, 22 years old, 120 pounds, wants position. Anything, willing workman. Address E. Williams, 41 and Holgate streets, Portland. 1t pd.

Dr. E. P. Dixon, the dentist, is ready to do all kinds of dental work known to the dental profession. Office hours, 8 to 12 and 1 to 6. 26 tf

Pasture for horses and cattle. Chehalem Valley \$1 per month, J. U. SMITH, Phone Black 65.

My German Coach stallion Pylos, also the Percheron stallion Troupier will be in Newberg the present season. Will arrive soon. Watch the paper for dates. J. W. HENRY.

FOR SALE—Dry slab wood at \$3.75 cash, per cord, sawed and delivered. WM. CRATER.

Hear the famous Pilgrim's Chorus on April 18, at the college.

Our cement is "Portland Cement" all the time. THE CHAS. K. SPAULDING LOGGING CO.

A unique line of spring and summer millinery at Miss Hutchen's store. Prices to suit. 1t.

FOR SALE—Full blood Plymouth rock eggs, \$1.00 per setting. Mrs. V. A. Vincent.

You will hear a fine concert in the college chapel Tuesday, April 18, 8:00 p.m. Ladies' Glee Club.

The college girls Glee Club will give their public concert on Tuesday evening. Admission 25c and 35c.

We have a few odd doors and windows which we are offering at reduced prices. THE CHAS. K. SPAULDING LOGGING CO.

FOR SALE—House and two lots on Fifth street. A bargain if sold at once. Phone, Black 125. 27 pd. W. C. DUNLAP.

Young hens, incubator chicks and Black and White Minorca eggs, \$1 per setting. W. P. Ulm, North Main Street. 1t pd.

Young man, 22 years old, 120 pounds, wants position. Anything, willing workman. Address E. Williams, 41 and Holgate streets, Portland. 1t pd.

Dr. E. P. Dixon, the dentist, is ready to do all kinds of dental work known to the dental profession. Office hours, 8 to 12 and 1 to 6. 26 tf

We are in the market for farm land which lies desirable for subdividing into small tracts. Write us what you have. Ralph Ackley Land Co., 605 Corbett Bldg., Portland, Oregon. 1t

FOR SALE—Dry slab wood at \$3.75 cash, per cord, sawed and delivered. WM. CRATER.

Hear the famous Pilgrim's Chorus on April 18, at the college.

Our cement is "Portland Cement" all the time. THE CHAS. K. SPAULDING LOGGING CO.

A unique line of spring and summer millinery at Miss Hutchen's store. Prices to suit. 1t.

FOR SALE—Full blood Plymouth rock eggs, \$1.00 per setting. Mrs. V. A. Vincent.

You will hear a fine concert in the college chapel Tuesday, April 18, 8:00 p.m. Ladies' Glee Club.

The college girls Glee Club will give their public concert on Tuesday evening. Admission 25c and 35c.

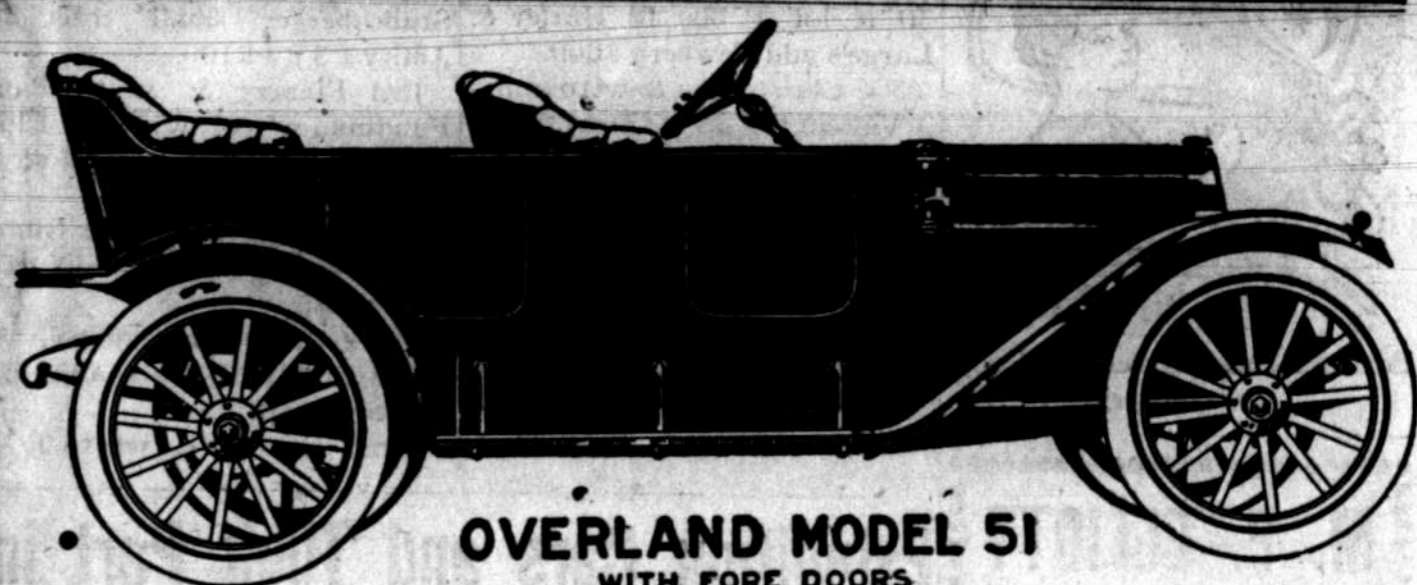
We have a few odd doors and windows which we are offering at reduced prices. THE CHAS. K. SPAULDING LOGGING CO.

FOR SALE—House and two lots on Fifth street. A bargain if sold at once. Phone, Black 125. 27 pd. W. C. DUNLAP.

Young hens, incubator chicks and Black and White Minorca eggs, \$1 per setting. W. P. Ulm, North Main Street. 1t pd.

Young man, 22 years old, 120 pounds, wants position. Anything, willing workman. Address E. Williams, 41 and Holgate streets, Portland. 1t pd.

Dr. E. P. Dixon, the dentist, is ready to do all kinds of dental work known to the dental profession. Office hours, 8 to 12 and 1 to 6. 26 tf



OVERLAND MODEL 51  
WITH FORE DOORS

## Get An Overland!

The machine of quality and beauty. The machine of simple, powerful engine, easy to handle, economical to run.

### \$875.00 Up

The Newberg Auto Company

#### Notice to Horsemen.

During the season I will be at the following places with my stallion: Sunday and Monday at home on Flett farm; Wapato Tuesday and until noon Wednesday; Newberg Thursday; Yamhill Friday and Saturday. 30 SAM OBYE, Owner.

#### Thoroughbred White Leghorn Eggs.

Trapnested stock, Tancred strain, extra winter layers. Settings or by the hundred. Will make prices right. Correspondence and visitors solicited. E. HROFER, Champoez, 17 tf. Route 5, Aurora.

#### East Side Greenhouse.

Roses, Perennial Flowers, Hydrangeas, Weigelias, Laurel, Carnation plants, potted plants for the house, Calla Lillies, Geraniums, Ferns, Dahlia roots. JOHN GOWER, Newberg.

#### To the Ladies of Newberg

I have disposed of my stock of Spirella corsets to Mrs. L. Hanon where they can be had in the future. MRS. LULU L. WIGHT.

#### Eggs From Best Layers.

The Buff Plymouth Rocks are great egg machines. Eggs from pen of high class birds at \$1.50 per setting. E. H. WOODWARD.

#### Notice of Administratrix Sale.

Notice is hereby given that the undersigned administratrix of the estate of Fred Best, deceased will sell at private sale the following described real estate, to-wit: Beginning at a point 40 ft. S. of the N. W. corner of a certain parcel of land in the city of Newberg; said parcel being that lying on the S. side of First street and E. of Main street and formerly owned by Joe. Everest and wife to Rockette Rogers; thence S. along said Rogers W. line to the North line of the land owned by David and Irene Everest to H. F. Lusher; thence W. to the E. side of the alley in block 4 Everest's addition to Newberg; thence N. to a point due W., of place of beginning; thence E. to place of beginning and in block 4 to Everest's addition to Newberg, situated in Yamhill County, State of Oregon. Said sale to be made upon the payment of the sum of \$500 in cash, balance of the purchase price to be secured by first mortgage upon said premises, payable on or before Oct. 1st, 1911, with interest at the rate of 6 per cent per annum until paid. Said sale to be made on or after Monday, the 17th day of April, 1911, at the office of U'Ren & Bowman, in Oregon City, Clackamas County, Oregon. MARY BEVY, Administratrix of the estate of Fred Best, deceased. U'Ren & Bowman, Attorneys for Administratrix. 25