

# Photos Taken at Camp Abbot

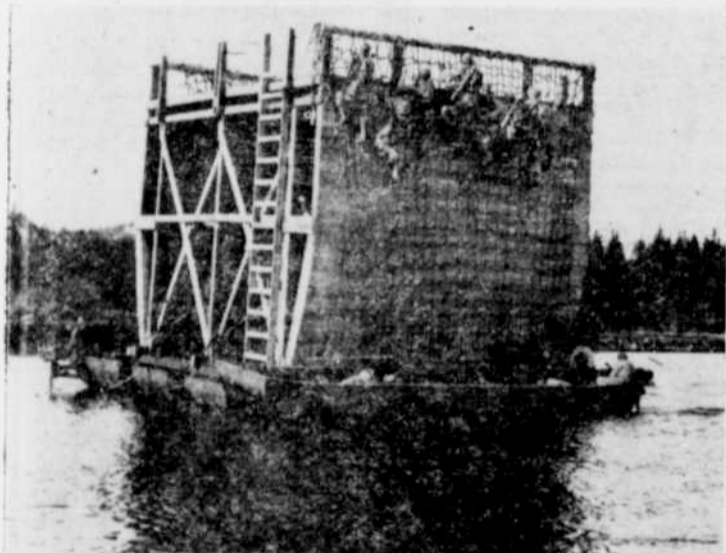
## Signal Corps Shots Taken During



In all theaters of operations, the Corps of Engineers prepares the way for the advance over land and water. It builds roads and bridges of several types. Above photograph shows Camp Abbot Army Service Forces engineer trainees learning by doing. They are laying a heavy ponton bridge across the Deschutes river in record time.



Col. Frank S. Besson, Post Commander, was one of the first to run the hazardous infiltration course here. The colonel is shown with his faithful pipe clinched firmly between his teeth, making his way through barbed wire entanglements while machine gun slugs whiz a few inches over his head.



Camp Abbot trainees are shown here negotiating the rope ladders of the debarkation tower. Speed boats circle the tower sharply to "rough up" the water, causing the structure to pitch and heave in the manner of a ship at sea.



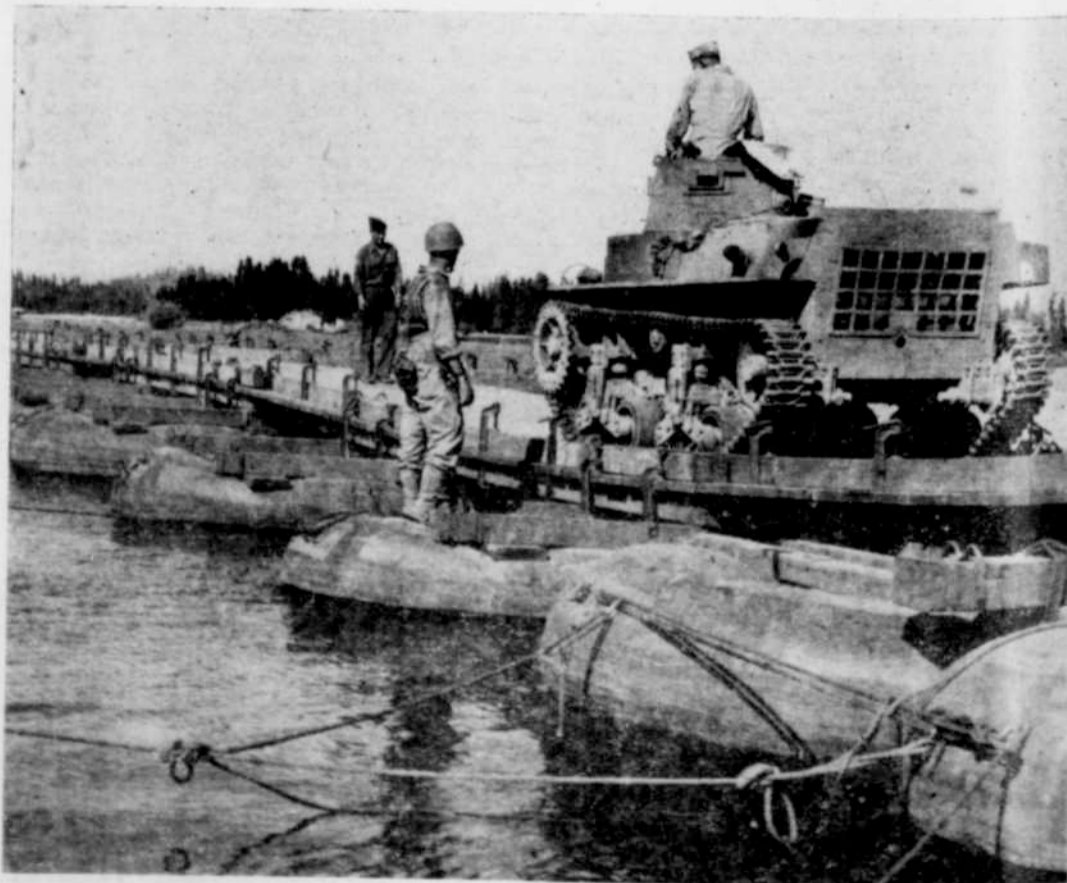
Inevitably a pup can be found following a body of troops. This canine youngster decided the hike back home was too much, so he hitched a ride on the pack of a passing corporal.



This unusual photograph shows the final stone being lowered into place on one of the huge chimneys which serve the new Officer's Club. These trainees, who are engaged in heavy construction, work under the guidance of the Specialist Branch.



The above picture shows one phase of the rigging application course, an important part of combat engineer training. The trainee's current problem is to apply correctly his knowledge of the "square knot."



A light tank is shown here testing a pneumatic ponton bridge. This type of bridge is easier to assemble and transport than the metal type span. Also it can be extended across a stream in far less time. Even though the pontoons are sometimes completely submerged under stress of heavy loads, buoyancy is maintained.