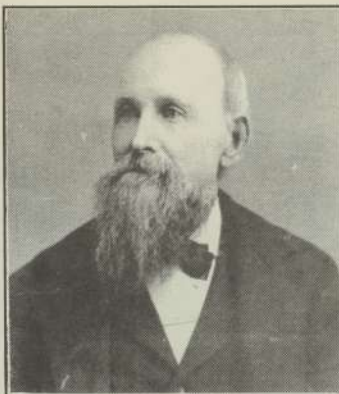
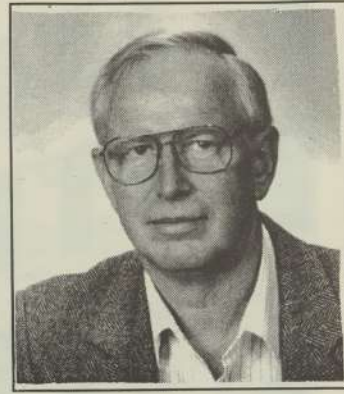


Three Commissioner Great-Grandfathers and Their Great-Grandsons



FRANK ROSS



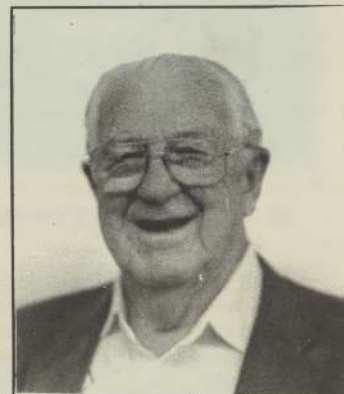
GORDON ROSS

Coos County Court and Officials 1896

This view was taken on the old courthouse steps at Empire, the then county seat, previous to removal of the county seat to Coquille. Front row, left to right: Edward Rackleff, county clerk, and L.H. Hazard, deputy county clerk for many years and president of First National Bank of Coquille. Top row, left to right: Frank Ross, commissioner, J. Henry Schroeder, county judge, and I. Taylor Weekly, commissioner.



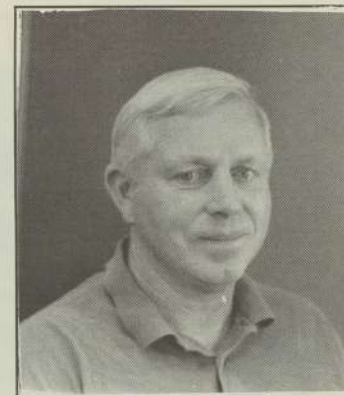
J. HENRY SCHROEDER



ELTON SCHROEDER



I. TAYLOR WEEKLY



ALVIN STIBITZ

Coos County Officials 1996

Seated above are the 1996 officials in the same position as their predecessors of 100 years ago. Gordon Ross, commissioner, left top is the great grandson of Frank Ross in the same spot above. Center above is Beverly Owen, commissioner, and Jim Whitty, commissioner, top right. Seated below is county clerk Mary Ann Wilson and to her left is Carol Stover, deputy county clerk.

Gordon Ross is a Coos County Commissioner, Elton Schroeder owns Schroeder's Furniture in Myrtle Point and Alvin Stibitz works for the Coos County Roads Department in Coquille. What the three men have in common is each had a great-grandfather who was serving as a commissioner at the time of the courthouse move in 1896. All three of the 1896 Commissioners still have many descendants in Coos County.

The county court in 1898 consisted of L. Harlocker, county judge; Ed Rackleff, county clerk; L.H.Hazard, Deputy county clerk; W.W.Gage, sheriff; I.T. Weekly and Donald McIntosh, commissioners. Frank Ross was a commissioner in 1896, when his term of office expired. Gordon Ross has followed in his footsteps 100 years later and is a Coos county commissioner today in 1996.