

# Architectural Evolution



A FEW YEARS AND TREES BEGIN TO APPEAR

The first, or original, courthouse in Coquille was a frame structure, two stories and basement, erected in 1898 by H. Snook of Salem at his bid of \$12,105. Bids were originally opened in April, 1897, but held in abeyance for nine months because proper plans had not been made for funds with which to build. This delay cost the county close to \$500, be-

cause the price of material had advanced in the meantime. At the time the structure was erected it was thought that it was being made sufficiently large to take care of the county's needs for many years, but the vision of the most sanguine residents of that day could not foresee what the future had in store for Coos County.



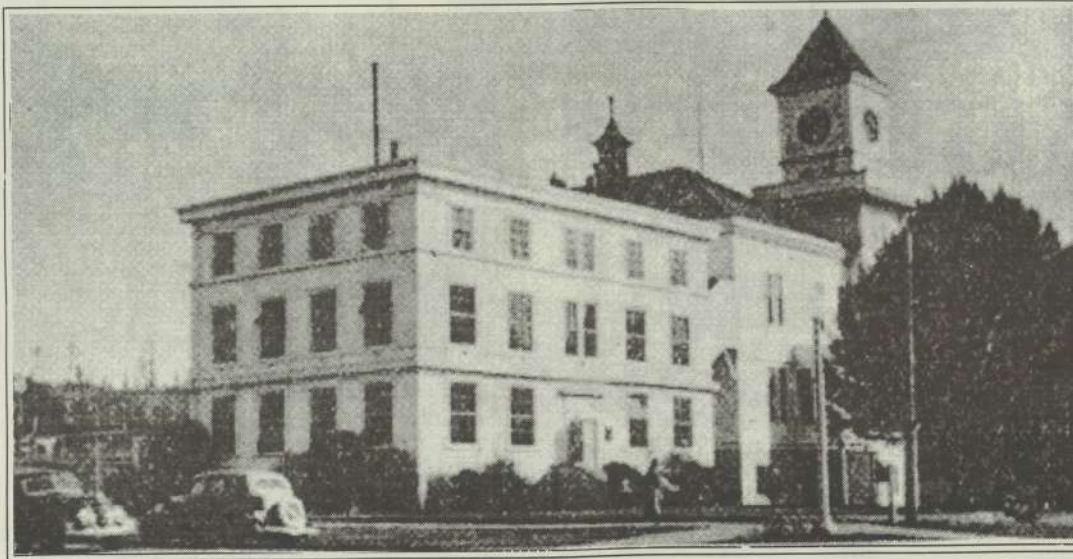
NEWLY PAINTED AND THE TREES HAVE GROWN

## Coos County Court and Officials

The first Coos County Judge was Charles Pearce, appointed from April 12, 1854 to December 18, 1854. R.S. Belknap was appointed to succeed Pearce in September of 1855, Pearce continuing until another appointment was completed. The remaining county judges serving Coos County were Samuel S. Mann, July 4, 1859 to July 4,

1866; Gilbert Hall, D.J. Lowe, J.H. Nosler (two terms), Geo. M. Dyer, D.L. Watson (two terms) J. Henry Schroeder, member of the original Baltimore colony, L. Harlocker (two terms), John F. Hall (two terms), James Watson, C.R. Wade, R.H. Mast, D.F. Thompson and Hugh McLain. This list goes up to 1937.

The first circuit court judge of this district in 1859 was Obediah B. McFadden, then associate supreme court judge, the three supreme court judges then each presiding over one of the state's three districts.



COURTHOUSE - 1916

In 1916, the population of Coos County had so grown and its legal business so increased that it was necessary to erect a new and more modern addition to the frame structure. Even the capacity of this addition, known as the Hall of Records, was fast overcrowded, and the prediction was made that before another 10 years rolled around, Coos County would need a larger and more modern structure to house its various departments.



STERN WHEELER WITH THE "DISPATCH" BEHIND IT



THE RACES