

Here's More Proof

THAT

The Mighty Coquille Valley

IS MOVING FORWARD

With Outstanding Achievements

IN

1950



Our Hearty
Congratulations

AND

Best Wishes
For Continued Success

to . . .

The Myrtle Lane
Drive-In Theatre
Grand Opening
TUESDAY EVENING
July 18th

to . . .

McClary Appliance Co.
Grand Opening
SATURDAY . . . July 15th

and to . . .

Stevens Hardware
Grand Opening
SATURDAY . . . July 15th

The great step forward that has been taken by these three business firms is further proof that the Coquille Valley is a grand place to live, work, play and trade.

"GO FORWARD IN '50" . . .

OF THE NEWEST ADDITION TO THE COQUILLE VALLEY'S AMUSEMENT ACTIVITIES

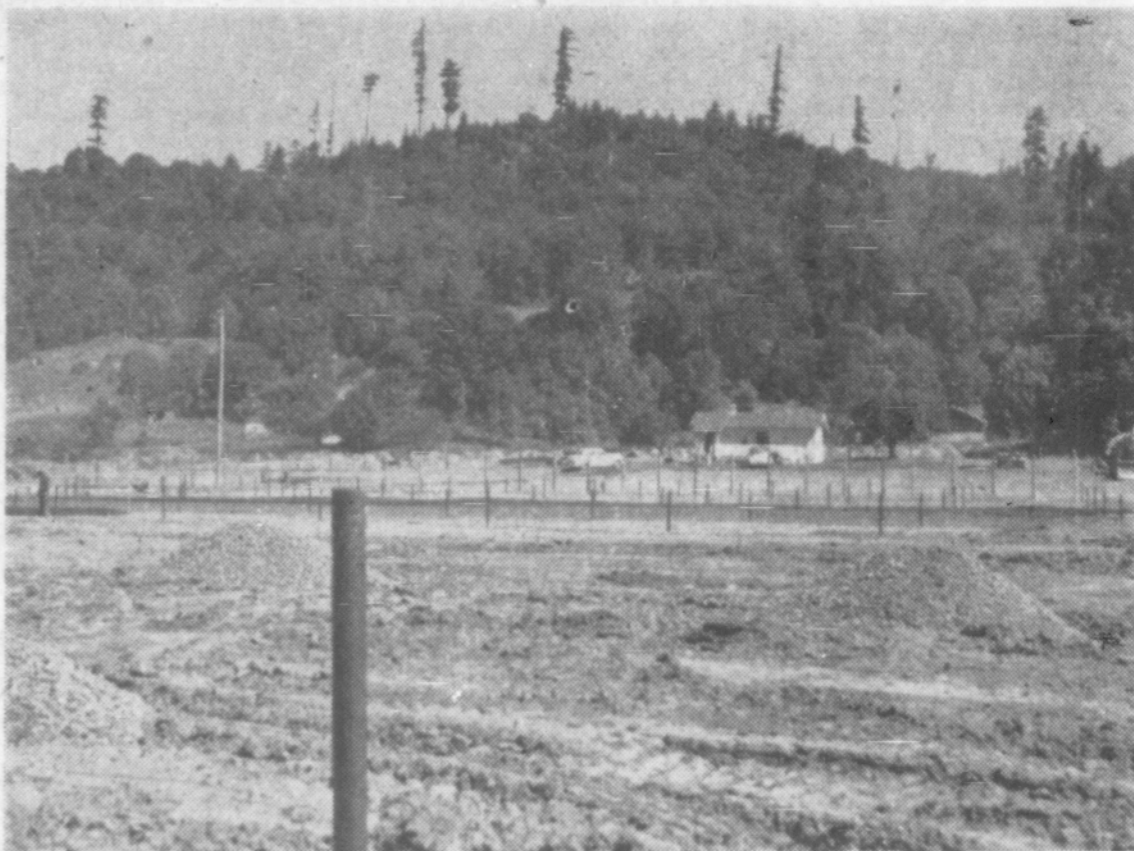
Mountain States Power Co.
West Coast Telephone Co.
No-D-Lay Cleaners
Union Service Station (Dale Elliott)
Farr and Elwood Co.
Biegger Furniture
Coquille Motor Sales
Jim's Market
J. C. Penney

Gant's Grocery
Coquille Service Station
Purkey Furniture
Western Stores
Coquille Auto Co.
Holimon Cleaners
Coquille Food Center
Brooks Furniture

Church Pontiac
Folsom's Grocery
George E. Oerding Agency
Newton's Grocery
George F. Burr Motor Co.
Coquille Hotel and Coffee Shop
Eaton's Feed and Seed Store
Steinmetz Motors

Coquille Valley Sentinel

THE COQUILLE VALLEY SENTINEL, COQUILLE, OREGON, THURSDAY, JULY 13, 1950.



THEATRE AMONG THE FIRS—The Myrtle Lane Drive-In theatre is set in truly lovely surroundings up the Rink Creek road just a few blocks off the Myrtle Point-Coquille highway. Pictured above are some of the Sentinel photos taken during the last week of construction when all the workmen were busy preparing the grounds, setting the pipes, doing the wiring, and traveling, bulldozing, grading and completing the buildings. (Sentinel Photos)

Wood And Claver Pioneers In Theatre Business Having Come Here In 1932

Orville Wood and Lloyd Claver are pioneers in the motion picture business, and the new Myrtle Lane Drive-In is but another step in their successful careers.

They first came to Coquille in 1932 when they purchased the Liberty theatre which they still operate. In 1936 they started construction

on the modern Roxy theatre and have now added the Myrtle Lane drive-in.

Both are pioneers in the industry with Orville Wood starting after the end of World War I in Wyoming. With the Clavers, Mr. and Mrs. Wood went to Roseburg where they operated the theatres in that city,

and desiring a finer climate came to Coquille in 1932.

Huge Screen For Drive-In Theatre

The silver screen, the beaded screen and screens which are especially porous to permit sound to pass through without being muffled are out, so far as drive-in theatres are concerned.

Since sound accompanying the (Continued on page 8)

WELCOME

to

The Coquille Valley's Newest . . . The Myrtle Lane Drive-In Theatre

MAY YOUR GRAND OPENING, TUESDAY, JULY 18th, BE THE FORERUNNER OF A CONTINUAL SUCCESS THROUGHOUT THE YEARS TO COME

It Has Been Our Sincere Pleasure
To Participate In The Construction Of This Newest
COQUILLE VALLEY ENTERPRISE
Whatever Your Building Needs You Can Always
Rely Upon Us To Furnish Only The Finest Materials
Quickly, Efficiently Economically

J.W.SAYRE BUILDERS SUPPLIES

"Everything for the Builder"

355 N. Taylor St.

COQUILLE

Phone 3451