



—Coquille Studio Photo

IN ONE OF THE MOST ATTRACTIVE fall weddings Miss Roberta Mason became the bride of Edward L. Aasen in a double ring ceremony at the St. James' Episcopal church. The bridal group pictured here are Miss Carol Gray, Mr. and Mrs. Edward L. Aasen, and the brother of the groom, Donald Aasen, who was best man.

### Peart Services Set For Friday at Two

Services for Joseph Peart, long time resident of this section, who died Nov. 18 at the age of 76 years, one month and one day, will be held Friday afternoon at two p. m. from the Schroeder Chapel in Coquille with the Rev. Bennie in charge of the services.

Mr. Peart had been in ill health for some time.

He was born in Morris, Ill., on Oct. 17, 1870, and married Elsie Grant of Mallard, Iowa, on Nov. 19, 1893, who survives.

They had three sons, William, Leland, and Harold. Harold passed away in 1939, and the other two sons survive. They live here.

The Peart family came to Coquille in 1907 and have lived here since.

Survivors include, sisters, Alus Lewis, Wenatchee; Della James, Watsonville, Calif.; Esther Ashmore, Ulin, Minn., and Annie Lower of Washington, and brothers, Jerry Peart, Eugene, and Johnson Peart, Grants Pass.

Also surviving are four grandchildren, Pfc. James A. Peart of Ft. Lewis; Clinton, Rose Marie, and Joan Peart, all of Coquille.

Mr. and Mrs. U. E. McClary were in Portland a few days this week on business.

### Services Held For Charles W. Sell

Charles W. Sell, aged 54, died in Coos Bay on November 15. Funeral services were held on Tuesday, November 19, by the Schroeder Brothers Mortuary at 1:30 p. m. Interment was in the Masonic cemetery. Relatives are: Mrs. Nellie Sell, Greenacres; Frank McFarlen, Millington; Bill McFarlen, Seattle, Washington; Fred Sell, Riverton; Lewis Sell, Riverton; Leonard Sell, Coquille; Victor Sell; Frances Sell, Riverton; Mrs. Aber, Coquille; Mrs. Bonnie Wallen, Coquille.

### Building Plans

A drawing by E. L. Perrotti and Son, contractors, is being approved by the city planning commission and council for the remodeling and changing of store front of the former Thrift grocery on First street. The building will be occupied by the Excel Dress Shoppe and the McClary Appliance company if present plans go through. The remodeling calls for one of the most modern store fronts and interiors in the city.

Mrs. Ray Mattoon and son, David, are expected home this week after a three weeks' visit with her brother, Howard Taylor, Jr., wife and children at Stockton, Calif.

### Wrestling Starts Again Friday Night

The grunt and groan artists will start their winter tussles and struggles again Friday night, Nov. 22nd, in the Coquille Community building when Fritz Schnabel, a German bruiser from Milwaukee, Wis., tangles with New Zealander Ken Kenneth in main event to run for one hour. Schnabel tips the scales at 230 and Kenneth, the giant from downunder, weighs 240 pounds.

The matches are under the auspices of the Fraternal Order of Eagles, and are being managed and promoted by Dave Johnson of the Casino.

Tickets are on sale at the Casino and will be on sale at the box office tomorrow night.

In the semi-finals Babe Scallinski will grapple with Jack Page. Page is a Utah headliner and Scallinski is a Pole.

In the preliminaries Bob Kruse, Oswego wrestles Amio Kallio of Portland, Oregon.

These will be the first matches of the winter season with more to run later.

### Members Chosen

Auditions for vocalist with the Coquille high school Swing Bands were completed this past week. Out of 15 entrants trying out, four finalists were chosen. They are Betty St. Clair, Wynne Davis, Doris Willard and Lila Danielson.

At a special assembly the four finalists sang with the swing band for selection of the vocalist. The vocalist winning in the final auditions was Doris Willard. She will sing with the band at all the functions the band plays for.

The swing band plays for noon dances and dances put on by the various clubs in the school. The band will also play for the teen age dances at the community building. With the addition of the vocalist the band numbers ten members.

Judges for the auditions were Mrs. Thora Watson, Mrs. Alice Lafferty and Wayne Smith.

### Christmas Program Scheduled

A Christmas program will be given by the high school music department

on Dec. 19 at 8:00 p. m. The program will be given in the afternoon for the high school and junior high school students and in the evening for the parents.

Sentinel Classified Advs. will sell it.

Reasonable Prompt  
Expert workmen and the finest materials are now available to help brighten and cheer up your home for the dismal season ahead. Call us for prompt, courteous service. Your satisfaction in our workmanship is assured.

### Kaple and Parrott, Contractors

PAINTING Spray or Brush PAPERHANGING  
Coquille and vicinity Phone 68

### Exams Ready For Officials

Examinations for the certification of basketball officials of the Coquille area have now been received by Ernest James, Coquille high school principal. All past basketball officials who wish to officiate this year will be required to take this examination as well as anyone desiring to be certified for the first time.

Anyone wishing to take this examination may get in touch with Mr. James at the high school or at his home.

**K. Rubber Welders**  
Complete TIRE Service  
Across St. from Phone Office  
231 So. Taylor—Phone 155  
RECAPS • REPAIRS • NEW • USED

**W. R. JOBES**  
Contractor in  
**Painting and Decorating**  
Interior - Exterior  
INTERIOR DECORATING A SPECIALTY  
PAPERHANGING  
SPRAY AND BRUSH WORK  
Barns and Roofs  
Phone 68 Coquille

**SAFEWAY Thanksgiving Food Guide**

It's easy and economical to plan your Thanksgiving Day dinner from the appetizing foods listed below. Select the ones you'll be needing, then buy them at Safeway. You'll enjoy guaranteed quality foods, and save money too.

**Guaranteed Meats Selected Produce**

**Oregon Prime Quality Turkeys**

<b>Hen Turkeys</b>	Grade A	59 <sup>c</sup>
	Average 12-16 lbs.	lb.
<b>Tom Turkeys</b>	Grade A	43 <sup>c</sup>
	Average 18-25 lbs.	lb.
<b>Half Turkeys</b>	Grade A Toms	53 <sup>c</sup>
	Ready to Roast	lb.
<b>LONG ISLAND DUCKLINGS</b>	Dressed	53 <sup>c</sup>
	lb.	

<b>Pork Loin ROAST</b>	<b>Leg of LAMB</b>	<b>Prime Rib ROAST</b>
End Cut LB. 57	Grades AA & A LB. 59 <sup>c</sup>	AA & A LB. 45 <sup>c</sup>

**Cranberries** Stock Up on This Timely Item lb. 45<sup>c</sup>

**Sweet Potatoes** Smooth Peelers 12<sup>c</sup>

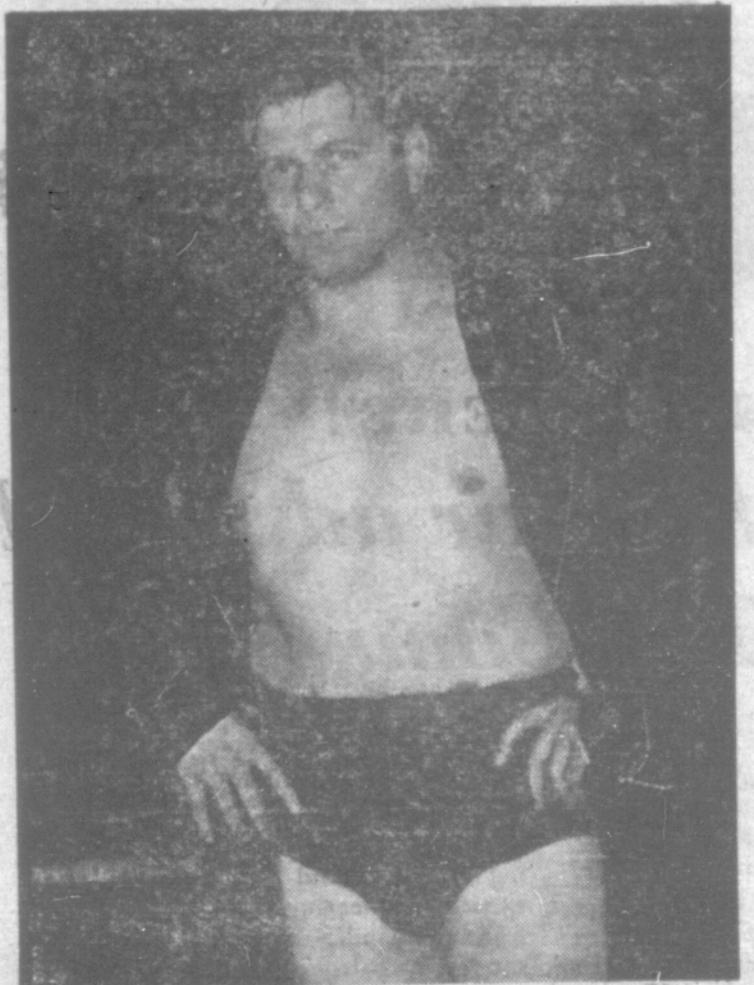
**Potatoes** U. S. Netteed 15 No. 1s Gems lbs 59<sup>c</sup> 100 lbs. 2.98

**Bell Peppers** lb. 11 1/2<sup>c</sup>

**Crispy Celery**  
Put some on the table fresh—add a little to the turkey dressing. Farm Fresh lb. 6 1/2<sup>c</sup>

# WRESTLING

Coquille Community Bldg., Friday, Nov. 22



AUSPICES F. O. E.

ADVANCE SEATS ON SALE AT THE CASINO

General Admission \$1.20 Ringside Seats \$1.85

Don't Miss This Full Evening of Exciting Entertainment

Turn in your Used Fats

**Order your turkey**  
Be sure of having a turkey for Thanksgiving that will roast golden brown, tender and delicious. Place your order today at Safeway.

**Sausage** Pure Pork lb. 49<sup>c</sup>

**Ground Beef** Fresh Daily lb. 35<sup>c</sup>

**Oysters** Fresh, med. pt. 75<sup>c</sup>

**Beef STEAKS** Porter-House Gr. AA & A lb. 53<sup>c</sup> Swiss lb. 49<sup>c</sup>

Meat features for Friday and Saturday Only

**APPLES** So tempting—you'll be eating one before you reach your home. Extra fancy, fancy.

**GRAPES** Almerica Emperors, lb 20 lb. 24<sup>c</sup>

**ONIONS** Oregon Danvers, lb 3c 1.29

**SQUASH** Hubbard or Marblehead lb. 5<sup>c</sup>

**DATES**, fresh 7 1/4-oz. cello package 3<sup>c</sup>

**Grapefruit** Marsh Seedless from Arizona lb. 5 1/2<sup>c</sup>

Produce features for Friday and Saturday Only

**Thanksgiving Menu Needs**

<b>Seasonings</b>	<b>Beverages</b>
Cinnamon SCHILLING'S 14-oz. tin 11 <sup>c</sup>	Airway Coffee lb. 33 <sup>c</sup> 2-lb. 98 <sup>c</sup>
Sage, Schilling 14-oz. tin 13 <sup>c</sup>	Hills Coffee Reg. or Drip lb. can 43 <sup>c</sup>
SCHILLING'S FOWLTRY Seasoning 3 1/2-oz. tin 13 <sup>c</sup>	Canterbury Tea Pkg. of 16 bags 36 <sup>c</sup>
SCHILLING'S PUMPKIN Pie Spice 3-oz. tin 13 <sup>c</sup>	Lipton Tea 1/4-lb. pkg. 51 <sup>c</sup>
<b>Miscellaneous</b>	<b>Cheese and Crackers</b>
Mince Meat COLLINS 15-oz. jar 29 <sup>c</sup>	Soda Crackers Krispy 2-lb. 44
Pitte J. Dates PARK ROW 6-oz. pkg. 25 <sup>c</sup>	Soda Crackers Snow Flake 2-lb. 44
Fruit Mix MAR BUD 24-oz. pkg. 49 <sup>c</sup>	Grahams Honey Maid small 14
Flour HARBEST BLOSSOM 20-lb. sack 63 <sup>c</sup>	<b>Cheddar Cheese</b> Made from whole milk lb. 65 <sup>c</sup>
Fancy Pumpkin Libby 1 1/2-lb. can 17 <sup>c</sup>	<b>Cheese Spreads</b> Kraft assorted Large variety 5-oz. glass 25 <sup>c</sup>
<b>CRANBERRY SAUCE</b> All prepared—Easy to serve. Dromedary brand 16-oz. can 25 <sup>c</sup>	

**Holiday Nuts**

<b>Nut Meats</b> KRAFT'S Vacuum Packed (MIXED) 7-oz. tin 49 <sup>c</sup>
<b>IXL Almonds</b> shelled 1 1/2-lb. 42 <sup>c</sup> in shells 1 1/2-lb. 42 <sup>c</sup>
<b>Walnut Meats</b> 1/2-lb. pkg. 55 <sup>c</sup>
<b>Brazil Nuts</b> In Shells 1-lb. pkg. 42 <sup>c</sup>
<b>Filberts</b> lb. 39 <sup>c</sup> Pecans lb. 52 <sup>c</sup>
<b>Mixed Nuts</b> In Shells 1-lb. pkg. 39 <sup>c</sup>

We reserve the right to limit quantities. All prices subject to change without notice.

2nd Big Week!  
**CANNED FOODS SALE**  
Stock Up Now For the Winter!

You get more for your money at SAFEWAY