

THE VOICE OF HISTORY



Farm Loan Ass'ns. Meet Here Saturday

George Leland of the Federal Land Bank of Spokane, will be the principal speaker when the Coast and Coos Bay National Farm Loan Association hold their annual meeting, Saturday, February 17, Secretary-Treasurer U. D. Powell announced today. The meeting will be held in the Odd Fellows hall in Coquille and will open at 10 a. m.

Mr. Leland will present a report of the operations of the Federal Land Bank for 1940. The National Farm Loan Association, which make and service Federal Land Bank loans in Coos and Curry counties, are stockholders in the Land Bank.

Reports of the business of the three associations will be made by Secretary-Treasurer Powell. Both his talk and Mr. Leland's will be illustrated with charts. Luncheon will be served at noon by the Rebekahs with the compliments of the association. Besides the members of the association and their families those invited to attend include all Land Bank Commissioner borrowers and

all persons who are buying land under contract from the Federal Land Bank.

In Appreciation

We wish to express our appreciation to our many friends for the kind help and expressions of sympathy we have received during our bereavement.

Mrs. Susan L. Richardson and family.

Mining Location notices for sale at this office.



MISS INEZ ROVER
State Accredited Instructor
Piano and Accordion

Phone 30L 185 West Second

Junior Women's Valentine Party

Civic projects, club business and ways to raise money were all forgotten Monday evening by Junior Women's club members who joined wholeheartedly in enjoying the care-free and jolly Valentine party planned by Estel Sohler and Vi Connarn. Heart-shaped pink and white cookies were served with coffee by Ora Horning and Catherine Maynard soon after the group assembled.

Mrs. Sohler and Mrs. Connarn made the Guild hall festive with Valentine decorations. There was a pussy willow tree bedecked with small red hearts. On top of the piano was Bergen's floral valentine, loaned for the party. Freesias from the Valentine girl's corsage flooded the hall with their sweet scent. Bouquets of jonquils and ivy added more beauty to the scene.

For entertainment, Mrs. Sohler introduced Court Whist, a ridiculous game that is sure insurance against gloom. Margaret Paulson, who knew when not to take tricks as well as when to remain speechless, won first prize. Eleanor McClellan, running Margaret a close second in following the complicated rules of the game, won second prize.

Attending the party were Lucille Cottengim, Ora Horning, Gertrude Mehl, Estel Sohler, Maxine Stevens, Leah Rover, Catherine Maynard, Inez Rover, Faye Wagner, Jane Kramer, Eileen Kern, Eleanor McClellan, Vesta Miley, Georgianna Johnson, Carol Young, Dorothy Fish, Eunice Barrow, Gertrude Swinney, Evelyn Elliott, Ruth Wiltshire, Mary Stevens, Emma Briggs, Vi Connarn, Margaret Paulson, Gretchen Paden, Edna Sandall, Helen Ayers, Josephine Purkey and Grace Greenough.

Church Societies

Mrs. C. T. Selbig, president of Saint James' Guild on Wednesday appointed chairmen for the Guild public card party Wednesday evening, Feb. 19, the last Wednesday before Lent. Chairmen named are Mrs. Bert Folsom, refreshments; Mrs. Annie Robinson, Chinese Checkers; Mrs. A. O. Walker, prizes. Mrs. Selbig, general chairman of the party, announces that tickets may be secured from any member of the Guild.

Hostesses for Wednesday's meeting were Mrs. E. W. Lorenz and Mrs. Bert Folsom. Three guests, Mesdames Grace Phelan of Aberdeen, Verne Oderkirk and Mike Daniels, attended the meeting. Members present were Mesdames Fred Kunz, T. B. Currie, Bert Folsom, Martha Gratke, C. M. Guilbert, L. H. Hazard, E. W. Lorenz, William Mansell, John Martin, Ida Owen, Robert Plieth, F. A. Pook, Annie Robinson, L. A. Rosa, Julius Ruble, Charles Stauff, A. J. Sherwood, C. T. Selbig, C. Vernon Smith, C. L. Tuttle, A. O. Walker, James Watson and Rev. C. M. Guilbert.

The Helping Hand Division of the Church of Christ Missionary society gave assistance Thursday to a needy family, when it contributed \$10 for the purchase of new materials. \$1 was given by the organization to a girl requiring assistance.

Work was started at the meeting on articles for the Hale's Christmas box. Mr. and Mrs. Hale are missionaries in the Philippines. Plans were made for the noon meal, which members of the group prepared Tuesday for delegates attending the county Church of Christ convention held at the local church.

The group met at the Henry George home. Mrs. Donald Farr and Mrs. George served lemon pie and coffee to the following members: Mesdames John Sanders, Ed Davidson, E. E. Benham, Fred Schaefer, Berlyn Billings, C. C. Farr, A. N. Foley, Ralph Harry and Earl Mitts.

The regular business meeting of the Woman's Society of Christian Service of Pioneer Methodist church was held Thursday afternoon with Mesdames William Ireland, W. P. Laws, Harold Ziegler, Belle Knife and Frank Leslie, acting as hostesses for the group. Mrs. W. P. Laws, opened the meeting with devotions. At the business meeting, conducted by Mrs. James Richmond, the new sewing club which meets Thursday afternoon with Mrs. Lee Peterson, was discussed. Reports were given by chairman of standing committees. The two guests at the meeting were Mrs. B. C. Minard of Spokane and Mrs. George Howe. Members present were Mesdames James McGuffin, Clyde Minard, C. C. McCurdy, L. W. Oddy, G. A. Gray, Wilkins, Noble Chowning, B. W. Dunn, L. P. Fugelson, Clarion Gourmley, Howard Graybeak, Fred Hudson, Jack Hultin, Wm. Ireland, W. P. Laws, A. J. Nussell, Elizabeth Oden, Walker Oarding, Lee Peterson, Leland Pearl, Wm. Pearl, James Richmond, R. B. Rogers, Edna Savage, Birdie Skeels, Geo. Taylor, Miranda Way and Harold Ziegler.

Calling cards, 50 for \$1.00.

Prospects For Navy Promotion Best In Peace Time History

Word has been received by the Marshfield Recruiting Station that in order to provide the necessary petty officers to man the greatly expanded fleet of today and the two ocean Navy of tomorrow the Navy department has lowered the minimum service requirements for advancement in rating. Under these new regulations it is possible for a recruit to become a first class petty officer in 30 months, a chief petty officer with an acting appointment in 54 months and a chief petty officer with a permanent appointment in five and one half years. This means a golden opportunity for the men now in the service and those enlisting in the near future to become the petty officers of tomorrow and the leaders of the new navy now being built.

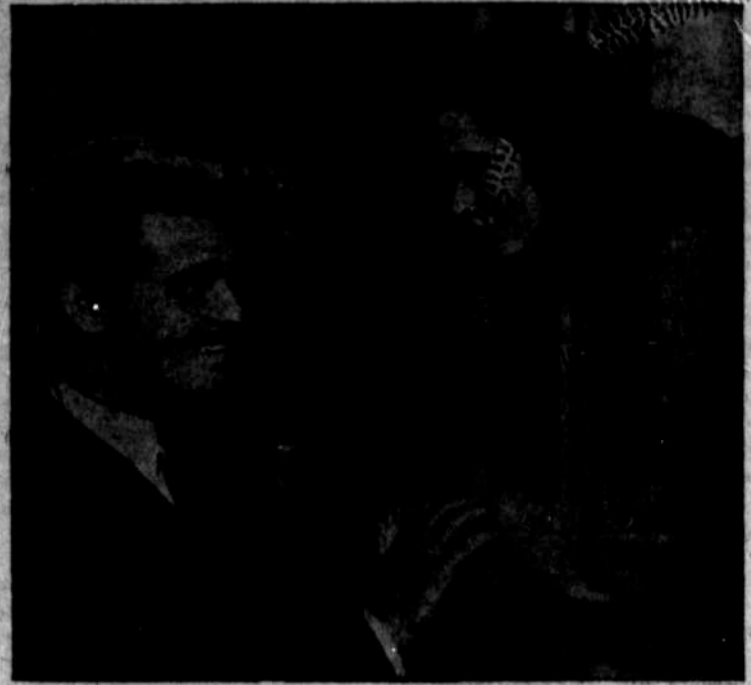
A speed up in recruiting to supply the demand for an increased flow of new recruits into training has made it necessary for the recruiting service to effect the enlistment of applicants in the shortest possible time after their applications have been made.

Young men of southwestern Oregon between the ages of 17 and 31 who wish to take advantage of this opportunity should apply without delay at the Marshfield recruiting office.

Ward McReynolds, or some examiner from the traffic department, will be at the Coquille city hall next Wednesday, Feb. 19, from 11 until five o'clock, to receive applications of those who desire drivers' licenses.

Blank Warranty Deeds for sale at this office.

Hedy, Turning to Comedy For First Time, Goes At New Role With A Vengeance



Clark Gable has his hair pulled in one of his comedy rough-house scenes with Hedy Lamarr in "Comrade X," widely heralded attraction coming to the Roxy screen Sunday, Monday, Tuesday. Gable plays a fast-moving American newspaperman in Moscow, and Miss Lamarr a spitfire of a Russian girl who proves herself a worthy opponent in a scrap. King Vidor, of "Northwest Passage" fame, directed.

Valentines. Get yours at Norton's. We have them for children for 1c, 2c and 5c each.

THE OREGONIAN
Portland's latest daily edition
J. A. Hannon Phone 180R

A PROVED ANTISEPTIC GOES FARTHER

There's no doubt about the effectiveness of M-31 Solution. Millions of people have been using it for years to gargle for irritated throats and for use as a mouth wash. It kills germs. It is double strength, so you can dilute it equally with water and get benefits. A full pint bottle costs only 49c at the Rexall Drug Store—Fuhrman's Pharmacy in Coquille.

Stock Reduction SALE
We Must Reduce Our Large Stock!
Due to the Assessment Time of March First
STORE WIDE BARGAINS

- CRISCO Snowdrift or Spry 3 lb 45c
- LARD Pure Nebergall 4 lb cello 35c
- PORK & BEANS Van Camps
16 oz. 2 for 15c Large 22 1/2 oz. 10c
- DRESSING SALAD Festival qts 18c
- SOUP TOMATO Campbell's 3 tins 23c
- CORN STARCH Argo 3 pkg. 23c
- BAK. PWD. Clabber Girl 25 oz 18c
- HONEY Melafloa 5 lb. tins 32c
- SPAGHETTI Franco-Am. 3 tins 25c

CORN BEEF 2 Can For 35c

- SPINACH Pref. Stk. No. 2 1/2 tins 2-25c
- PALMOLIVE, CAMAY, LIFEBOUY, LUX SOAP 4 bars 25c
- PEAS or St. Beans Festival No. 2 3 for 25
- SOAP Woodbury Toilet 4 bars 25c
- SAUSAGE Swifts Vienna 1/2's 3 tins 25
- MEAT Swifts Devil 1/4's 3 tins 10c
- JUICE Swifts Tomato 8 oz. tins 6 for 25
- JUICE Swifts Tomato Large tins 18c
- PARD Swifts Dog Food 3 tins 25c

Laundry Soap I G A 10 Bars For 25c

- CORN FLAKES KELLOGGS, ALBERS or POST TOASTIES Per Pkg. 5c
- PRUNES Fresh Canned No. 2 1/2 tins 10c
- BEANS SEASIDE LIMA 3 tins 25c
- BEETS CANNED SLICED 3 tins 25c
- BORENE Soap Powder Lg. Pkg. 28c
- JUICE I. G. A. TOMATO 16 oz. tins 4 for 25c
- CRACKERS Sta Crisp 2 lb. box 17c
- FLOUR Whole Wheat 10 lb. sack 33c
- GRAHAM Fine or Coarse 10 lb. sack 33c
- FLOUR Feather Flake 49's 1.39
- FLOUR Valentine 49's 1.29
- FLOUR Kallco Kate 49's 1.05
- CORNMEAL White or 9-lb Yellow sack 28c

PHONE 4

FREE DELIVERY

C. O. D. SERVICE

Nosler's Grocery

Sale Runs From Friday the 14th, to Saturday the 22th Inclusive
BRING YOUR SURPLUS FOOD STAMPS HERE

Here They Are!

Your Own Terms within Reason

| Car No. | Price |
|----------------------|-------|
| 934-'36 Coach | \$375 |
| 897-'34 Panel | 195 |
| 774-'36 Sedan | 265 |
| 1141-'35 Coupe | 220 |
| 1091-'29 Cabriolet | 35 |
| 1018-'30 Tudor | 50 |
| 1081-'28 Sedan | 25 |
| 565-'28 Coupe | 15 |
| 1062-'34 Coupe (two) | 175 |
| 996-'34 Coupe | 225 |
| 1097-'36 Panel | 260 |
| 1043-'28 Panel | 25 |
| 1045-'28 Tudor | 45 |
| 409-'32 Coupe | 95 |
| 999-'31 Coach | 95 |
| 1006-'30 Sedan | 45 |

Many Others to Choose From

Coquille Motors

Your Dodge and Plymouth Dealer