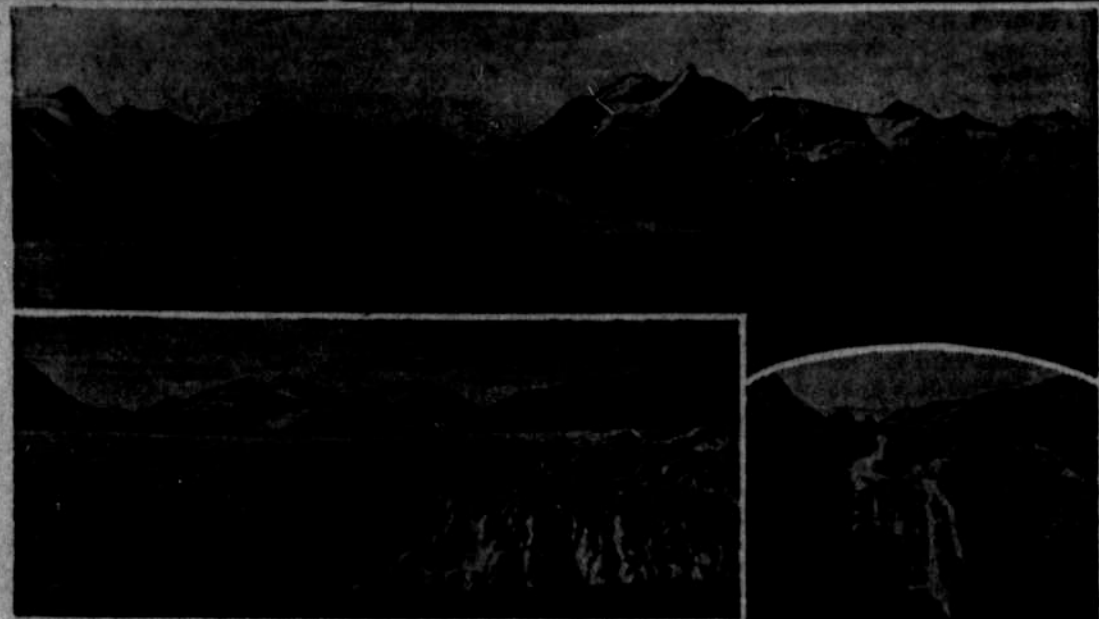


WORLD'S SAFEST SEA LANE



FOR the seven hundred miles of its length, the sea lane which skirts the coast of British Columbia is today the safest salt water route in the world, and the most beautiful. This is the route to Alaska from Vancouver and the channel lies between the towering peaks of the mainland and the forested mountains of the off-shore islands. Known as the Inside Passage, this route along which ply palatial steamers, fine yachts and lumber craft, out-rides the fjords of Norway and provides the outstanding salt water scenic trip of the world. It is one of the very few routes over which in the second World War, Americans are permitted to travel in ships of British registry.

Belle Knife Hospital Notes

Mrs. Henry Schwenn, who lives on the North Bank road, was admitted to the hospital last Friday for a major operation.

On Monday M. W. Freitas and Mrs. June Bailey underwent major operations and Mrs. Addie Williams, of Bandon, entered for treatment.

Chas. Gill, employee in the Kline logging camp at Fairview, came in Tuesday to have the ends of three fingers dressed. They had been cut off in an accident at the camp.

The same day Mrs. J. D. Caudle entered for treatment.

A seven-pound baby girl was born to Mr. and Mrs. Henry Edgmon, of Riverton, on Tuesday this week.

Dismissals the past week were Mrs. Manley Matney and baby on Sunday, Ray Griffin on Monday, Mrs. Cy Willard yesterday and Mrs. Chas. Stone last Friday.

Births At Coquille Hospital

To Mr. and Mrs. Paul Vincent, of Coquille, last Thursday, a seven pounds and ten ounces baby boy, who has been named Lawrence Russell.

To Mr. and Mrs. Clyde Clark, of Coquille, a baby boy, named James Philip, who weighed nine pounds, six ounces at birth last Friday.

Another baby boy, Thomas Edward, who weighed four pounds, four ounces, was born the same day, to Mr. and Mrs. A. J. Crump, of Gravel-ford.

To Mr. and Mrs. A. E. Doyle, of Arago, a baby girl weighing seven pounds, one and one-half ounces, yesterday. She has been named Mildred Carol.

Choice cut flowers and plants at Bergen's. Let us decorate for your June wedding, or supply the bride's bouquet.

Geologist Tells Of Bandon Oil Well

(Continued from Page One)

come from the bottom of the 2200 feet bore, keeps the mud so agitated that the concrete, even the 24-hour variety, will not set. The gas bubbles through the mud like a boiling teakettle. He said there is no water in the hole, nothing but mud, and the need for the plug was to cut off any downward expansion of the gas from the point where it was found some six or seven hundred feet down.

Further information as to what is being done there was in an item in last week's Western World whose editor had interviewed P. L. O'Bannon, geologist and geophysicist, of Huntington Beach, Calif. Mr. O'Bannon is an independent geologist, not in the employ of any large oil company, and his statement that the showing for oil and gas in commercial quantities from the Bear creek district are in accord with what Mr. Ewell, as well as W. E. Marrion, have claimed for years in regard to the Coquille valley.

Following is the quotation from the World as to what Mr. O'Bannon said:

"I beg leave to state that my most sanguine hopes were reached long before my observations were concluded. I find that there is an entrapped oil pool six miles in length, varying in width; however, it is wide enough to guarantee a wonderful oil structure. Structure runs N. E. by S. W., depth four zones 700 feet to 5000 feet deep. Structure rests on cretaceous formation with evidence of Eocene, Miocene, Pliocene formation of the tertiary period.

"Operations at the well of the Pacific Petroleum Corporation: drilling with rotary with 9% hole to 2100. New equipment has reached here for use in continuing the hole further.

"I have recommended the hole to be carried to the lower zones before setting casing. In case an upper zone becomes necessary to tap, it can be done by perforating the casing. If casing were set now, the lower zones would not be known. Since starting anew they have cored through 40 feet of asphalt formation and they are now at nearly 2200 feet in shale with

streaks of sand.

"In view of the fact that they had wonderful showings above, at 700, 1800 to 2100, and the present showings, indicate to me that the potentialities of oil and gas in commercial quantities are good. From what I have gathered in the short time on the ground here I have no hesitation in locating two more wells before returning to California where they are waiting for me on other geological work.

"This report is made possible by the efficient manager of the Pacific Petroleum Corporation, Mr. John Ewell, whose tireless efforts under great difficulties deserve much credit."

Calling cards, 50 for \$1.00.

Facts vs. Fancies

By THE W. C. T. U.
DICTATOR HITLER'S propaganda policy, as told in "Mein Kampf," is that a colossal lie often-repeated will convince the poor suckers.

The brewers evidently have a similar policy of "reiteration of misrepresentation". Their propaganda campaign throughout the past year was a clever attempt designed to convince John Q. Public that repeal has solved the tax problem, the labor problem, the farm problem, and the education problem.

The American public, especially the small city and rural resident, is different though. While clever

arguments may convince him momentarily, in the long run he will listen only to facts. And the facts indicate that the brewers have overstepped themselves.

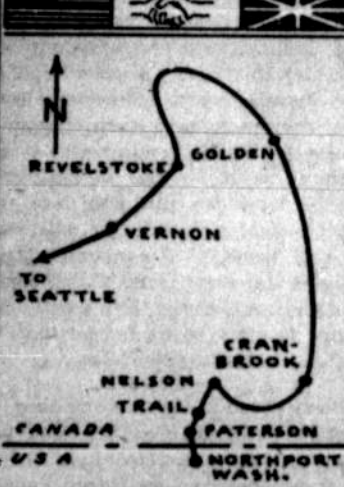
In the Factory.
Until the war-stimulated boom in the fall of 1939 there were as many men out of work as there were in 1933, hence the brewers' claim that beer has "created one million jobs in 100 industries" cannot be accurate. Beer's annual output of 50 million barrels has taken from the laboring man a great part of the two billion dollars now spent each year for beer. Yet, the industry is

A. L. Hooton, electrical contractor and dealer, 274 Second St., Coquille. Complete stock of wiring supplies. tt

Spectacular Industries Nestle In Shadow of Canadian Rockies



OF the twenty thousand miles of highway which traverse the Province of British Columbia, Canada, no routes are more attractive than those which pass through the section known as the Kootenays, in its south-eastern corner. River, lake and mountain combine to make this whole region one vast scenic park, but at the same time the traveller is introduced to some of the Province's most spectacular industrial developments. It is seldom indeed that industrial activity and scenic grandeur are so closely associated as in British Columbia's Kootenays. Spokane, Washington, makes a convenient "jumping-off" place for travellers from the United States, and several fine routes radiate from that city to the International Boundary. The traveller who goes through Northport to Paterson, B. C., sees almost immediately the giant Trail Smelter picturequely situated on the banks of the Columbia River. A few miles farther are Bonington Falls on the Kootenay River, with their great hydro-electric plants. Beyond Nelson among its orchards the route crosses



Kootenay Lake and continues through Cranbrook and Fernie to the Columbia Valley beside the western foothills of the Rocky Mountains; a great mining coun-

try, splendidly scenic, and rich in fish and game. Golden, at the head of the Valley, is the western portal to the new highway around the Big Bend of the Columbia.

LUNCHEON MEATS

A pork, beef or veal roast sliced and served cold along with cottage cheese and sweet or dill pickles make up the main items in any picnic or workmans lunch.

We have all these and also a complete line of prepared luncheon meats, catsup, mustard, horse radish and tomato juice.

Phone 20

J. L. STEVENS
Peoples
MARKET
"Your Ideal Meeting Place."



AUTO ENGINE OIL O.K.'D FOR WATCHES

LOCAL NEWS—Shell dealers here—and throughout the U. S.—are displaying fine Swiss watches, keeping perfect time, lubricated with regular 25¢ a quart Golden Shell Motor Oil!

With car-makers now machining and fitting engine parts to ten-thousandths of an inch, this test has caught the eye of engineers and motorists. Here is a long-lasting, tough-bodied oil that is so highly refined, so fast-flowing, it offers an amazing factor of safety to every car owner.

Look into Golden Shell Motor Oil—see the watch it lubricates—at your Shell dealer's today.



Golden Shell SHELL
THE MOTOR OIL FOR PRECISION-BUILT CARS

Cool Foods For WARM WEATHER

DAIRY PRODUCTS Month

Friday thru Saturday June 7-8 incl.

SAFEWAY Ask for free copy of the Family Circle Out Today!

SPAM Hormel's Miracle Meat 12-oz. can	23¢	Butter Grade A lb.	28c
JUICE Sunny Dawn TOMATO Big 46-oz. Can	15¢	Cheese Mild Cream Lb.	19¢
DUCHESS SALAD DRESSING Quart Jar	25¢	Milk CHERUB Fresh Tasting 5 tall tins	25¢
TEA CANTERBURY Orange Pekoe 1/2-lb. pkg.	25¢		
Pineapple SLICED No. 1 1/4 can	2 for 19¢		
Pork & Beans	3 No. 2 1/2 cans 25¢		

PEACHES Castle Crest 2 No. 2 1/2 cans	25¢	ROYAL SATIN SHORTENING 3-lb. can	39c
CORN Industry No. 303 can	2 for 15¢	AIRWAY COFFEE Lb. 12¢ 3-lb. 35¢	
PEAS Sugar Belle 3 No. 2 cans	29¢	NOBHILL COFFEE Lb. 18c 2 lbs. 35c	
FANCY SPINACH No. 2 1/2 Emerald Bay can	12¢		
TOMATOES Solid Pack 2 No. 2 1/2 cans	25¢	FRESH FRUITS AND VEGETABLES	
GRAPES Glenn Aire No. 2 can	10¢	Lemons 2 Doz	29c
KITCHEN CRAFT Quality Flour 49-lb. sack	\$1.39	Tomatoes 2 Lbs.	19c
YORK FLAKES No. 1 Light Meal	10¢	Oranges 2 Doz.	29c
WALNUTS Liquid Pectin 3 8-oz. bot.	29¢	Green Onions	
VINEGAR Highway—50 grain Qt. bot.	12¢	Radishes 4 Bunches	10c
EGGS Chaperos 2 pkg. 27¢	27¢	Carrots 3 Bunches	10c

GRAND SHORTENING 3-lb. can	48¢	HAM Central Pack Half or Whole	LB. 21c
SHRIMP Town House—2 1/2 cans	15¢	BACON Half or Whole PIECE	LB. 15c
SANDWICH SPREAD Lunch Box Quart Jar	35¢	PURE LARD 4 LBS.	29c
RAISINS Sun-Maid Nectars 15-oz. pkg.	7¢	BEEF ROAST	LB. 18c
COOKIES Loose-Wites Assorted Pkg.	15¢	VEAL ROAST	LB. 15c
SOYSA HERSHEY'S 14-lb. pkg.	9¢	PORK ROAST Picnic Style	LB. 12 1/2c
CHOCOLATE Hershey's Best 16-lb. cask	12¢	FILET OF SOLE	LB. 17 1/2c
SOAP 24-oz. 17¢			
WETTS KING Granulated Soap Glass Pkg.	49c		
SEYDOL Granulated Soap 24-oz. pkg.	19¢		
PALMOLIVE Toilet Soap 2 cakes	11¢		

SAFEWAY GUARANTEED MEATS!