

The Hardys Are Back Again At The Roxy Sunday, Monday, Tuesday



Lewis Stone, Mickey Rooney, Virginia Grey
in "The Hardys Ride High"

ministration will be an autonomous federal agency as heretofore.

"However, one clear purpose of the president's reorganization plan is to reduce the number of officials reporting directly to the president. Hence, the governor of the Farm Credit Administration will report to the secretary of agriculture rather than to the president. The secretary's responsibility will therefore be that heretofore exercised directly by the president.

"These differences in responsibility of the secretary and the status of the agencies concerned are dictated by several considerations. While the supervision of credit facilities in the farm field is closely related to the other agricultural land-use activities of the federal government, it also has an equally important relation to the work of the treasury department and of the federal loan agency.

"Furthermore, not all of the functions of the institutions and corporations under the supervision of the Farm Credit Administration are exclusively governmental in character. The Farm Credit Administration exercises a type of federal supervision over these agencies quite unlike the usual federal supervision where the organizations and controls are wholly

governmental.

"Supervising as it does many different types of organizations—involving among other things more than 8,000 corporations—the Farm Credit Administration does not seem to be adapted to complete identification with the department. The relationships involved can be handled best by a continuation of its present method of operation, with the secretary of agriculture exercising a coordinating supervision in only the broadest and most general way."

"I interpret this to mean," said Mr.

Brown, "that the cooperative system of borrow-member ownership and direction of our local credit institutions—the National Farm Loan Associations and the Production Credit Associations—has worked so satisfactorily that they will be maintained just as they are and will not be affected by the shift of the Farm Credit Administration to the department of agriculture."

Units of the Farm Credit Administration of Spokane, which serve Washington, Oregon, Idaho and Montana, are the Federal Land Bank, the

Federal Intermediate Credit Bank, the Production Credit Corporation and the Spokane Bank for Cooperatives.

Mrs. Parke Suffers Concussion

Mrs. W. S. Parke suffered concussion of the brain, lacerations and bruises, early last Friday morning as she and Dr. Parke were returning from Coos Bay, when his automobile left the highway near the high school building here and collided with a telephone pole. She has been in the Coquille Hospital since.

Marriage Licenses

May 27—Clyde Sherman Clark and Burnice Ruth Dopp, both of Coquille.
May 27—A. McCulloch and Virginia M. Jordan, both of Denmark, Ore. They were married by Rev. Oliver J. Gill at Marshfield last Saturday.
May 29—Harry P. Chilson, Jr., of Port Orford, and Reeva Lou Dibby, of Cohasset, Minn.
May 29—Walter Barth, of Marshfield, and Irma Combs, of North Bend.

Mining Location notices for sale at this office.

To Be No Change In Farm Loan Policy

There will be no change in the policy of local direction and management of local National Farm Loan Associations and Production Credit Associations serving farmers and stockmen as the result of the transfer of the Farm Credit Administration to the United States Department of Agriculture, officers of these associations were informed this week by R. E. Brown, general agent of the Farm Credit Administration of Spokane.

The Farm Credit Administration was transferred to the department by President Roosevelt's reorganization plan No. 1.

"I have received from Governor F. F. Hill, of the Farm Credit Administration, an official statement from Secretary of Agriculture Wallace which makes clear the new relationship between the administration and the department," Mr. Brown said.

Secretary Wallace's statement said in part, "The Farm Credit Administration, including the Federal Farm Mortgage Corporation, will not become an integral part of the Department of Agriculture. Responsibility for carrying out the many federal statutes which form the basis for several types of farm credit, for formation and execution of operating policies, for control of fiscal, personnel, legal, informational, and related affairs will remain with the governor of the farm credit administration. It is through such controls and procedures that the head of an agency discharges his public responsibility. Therefore, to this extent the Farm Credit Ad-

COMING!
NEXT WEEK
GIGANTIC Sale
OF
"Superbuilt"
"Daveno"

WATCH FOR OPENING
DATE OF SALE!

FURNITURE CO.

315 W. 1st
Coquille, Ore.

GOLDEN RIPE
BANANAS lb. **5c**

Grade A -- Large
EGGS doz. **18c**

MORNING
MILK can **6c**

MACARONI 6 lbs. **25c**

PARKAY 2 lbs. **39c**
FREE CUPS & SAUCERS

M. J. B. CHASE & SANDBORN
COFFEE lb. **25c**

Large Soft Shell
WALNUTS lb. **16c**

LETTUCE 2 heads **9c**

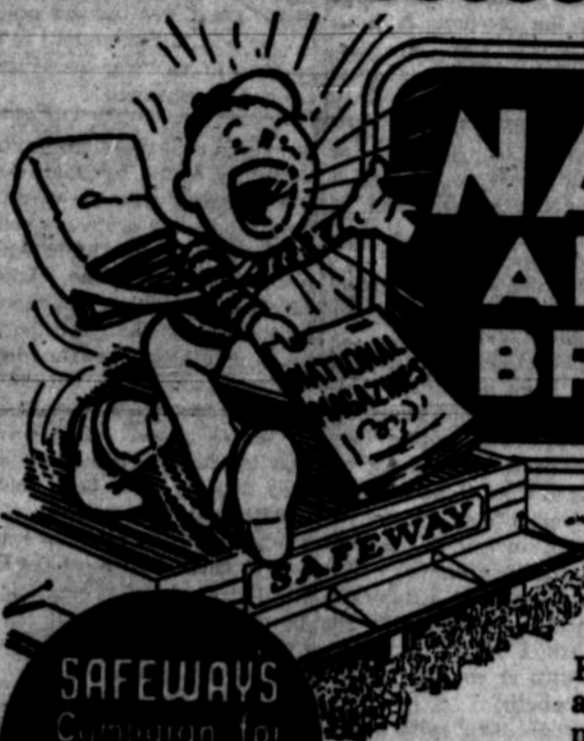
PRICES EFFECTIVE FRI. & SAT.

Dillard Market

"SPEEDY" by Bosworth Motor Co., Coquille



USED CAR SPECIALS
PICK UPS—Priced to sell, in very good condition and with good rubber. Models 1935, 1936, and 1937. Priced right to sell quickly.



SAFWAYS
Comparison for
LOWER LIVING COSTS

AIRWAY COFFEE

3 LBS. **39c**

NATIONALLY ADVERTISED BRANDS SALE.

Savings for Fri. and Sat., June 3 and 4, Coquille

Del Monte, Libby, Stokley, Heinz, Campbells, Van Camps, Kelloggs, Kraft and scores of other famous brands are always available to Safeway customers at consistently low every day prices. But this week you save even more on your favorites. It will pay you to stock up heavily!

Grapefruit L & H NO. 2 CAN **25c**
3 CANS **5c**
MILK CHERUB TALL CANS EACH **5c**

FRESH SPRING PRODUCE

BEANS Fresh Kentucky Wonder 2 Lbs. **19c**
CARROTS Tender 4 Bun. **15c**
ONIONS White Bermuda Stockton 3 Reds, Stockton Yellows lbs **10c**
CABBAGE SOLID HEADS LB. **3c**
NEW POTATOES 10 Lbs. **19c**
SHAFTER WHITES U. S. No. 1

Crackers SODAS SLIGHTLY SALTED 2 LB. BOX **15c**
Shortening KEEN 4 LB. PACKAGE **35c**

QUALITY MEATS AT SAFEWAY

VEAL ROAST CROWN CUT LB. **15c**
VEAL STEAK MILK FED LB. **17 1/2c**
BACON MILD CURE LB. **22c**
FRANKFURTERS NEW SKINLESS LB. **17 1/2c**

SAFEWAY STORES

Marshmallows 2 Lbs. **25c**
Palmolive Soap 2 Bars. **13c**
Ivory Flakes Lg. Pkg. **23c**
Jellwell 3 Pkgs. **13c**
Karo Sprup. 3 Lb. Can. **23c**
Spry Shortening. 3 lb can **55c**
Supurb Soap Lg. Pkg. **18c**
Krispy Crackers 2 lb. box **25c**

CHEESE COOS MAID POUND **14c**

BEER BROWN DERBY FULL QUART Plus Deposit **19c**
3 CANS **29c**