

# WONDERWORD

By DAVID OUELLET

**HOW TO PLAY:** All the words listed below appear in the puzzle — horizontally, vertically, diagonally and even backward. Find them, circle each letter of the word and strike it off the list. The leftover letters spell the **WONDERWORD**.

**MANITOBA'S POLAR BEAR SAFARI**

**Solution: 8 letters**

A	S	B	U	C	L	S	R	A	E	B	U	G	G	Y
T	D	I	W	I	L	D	D	O	H	P	N	A	L	P
G	S	V	G	A	A	S	H	A	D	O	W	S	S	P
N	S	I	E	H	F	T	B	W	H	I	T	E	A	A
I	U	R	L	N	T	I	U	O	S	N	I	F	F	S
L	O	S	N	A	T	I	O	N	S	T	E	G	E	S
B	I	A	R	A	R	U	N	S	D	X	E	D	T	E
M	R	P	T	E	S	U	R	G	P	R	I	A	Y	N
A	U	P	R	I	V	A	T	E	L	U	A	E	M	G
J	C	R	U	S	G	O	D	A	G	R	E	A	T	E
E	L	O	C	D	E	I	R	T	N	O	R	T	H	R
S	O	A	K	D	T	L	L	I	H	C	R	U	H	C
T	S	C	I	G	R	O	U	P	S	W	E	I	V	
I	E	H	O	R	I	Z	O	N	O	S	D	U	H	S
C	E	N	I	L	R	I	A	I	C	E	P	A	C	K

Adventure, Airline, Ambling, Approach, Bears, Boreal, Buggy, Churchill, Close, Cubs, Curious, Dogs, Expedition, Fall, Great, Groups, Guides, Habitat, Hide, Horizon, Hudson, Ice Pack, Inuit, Majestic, Nations, Naturalist, North, Passenger, Plan, Point, Private, Rovers, Safety, Shadows, Sighting, Sniff, Snow, Team, Truck, Tundra, Views, White, Wild  
**Saturday's Answer: Native**  
 To purchase **WONDERWORD** books, visit [www.WonderWordBooks.com](http://www.WonderWordBooks.com), or call 1-800-642-6480.

# SUDOKU

Complete the grid so that every row, column and 3x3 box contains every digit from 1 to 9 inclusively.

**SATURDAY'S SOLUTION:**

3	6	5	9	8	4	7	1	2
7	2	4	5	3	1	6	8	9
9	8	1	6	2	7	5	4	3
5	3	7	2	4	9	8	6	1
8	9	6	1	5	3	2	7	4
1	4	2	7	6	8	3	9	5
4	5	9	8	7	2	1	3	6
2	7	3	4	1	6	9	5	8
6	1	8	3	9	5	4	2	7

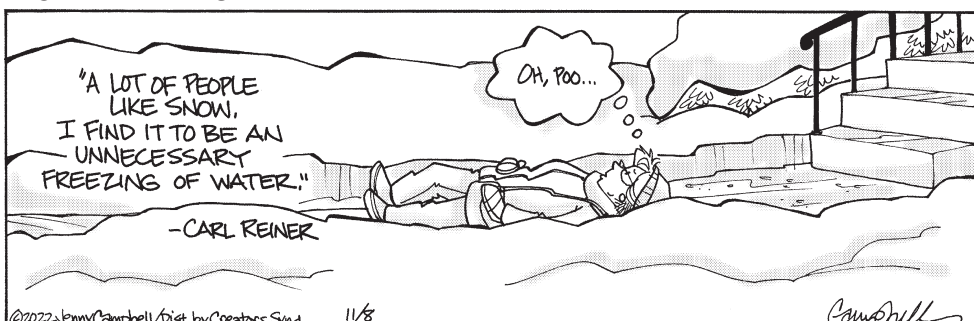
			4	7	9			
			3	5				6
9		4			8		2	
8			7	6		3		
	6						4	
		2		8	1			7
	2		1			6		4
4				7	6			
		3	4	9				

DIFFICULTY RATING: ★★☆☆☆

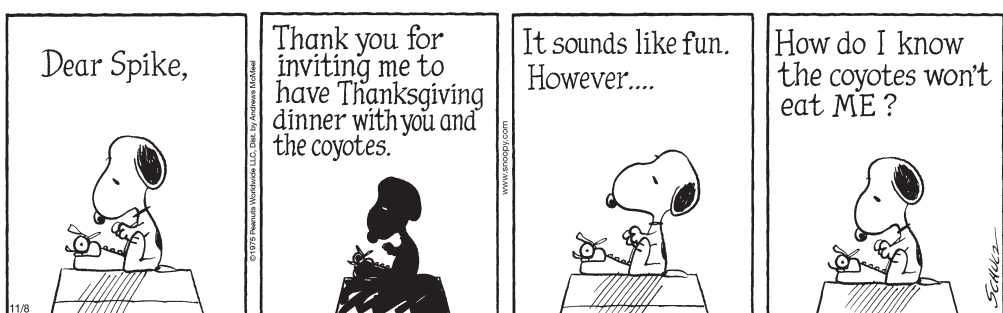
## OTHER COAST



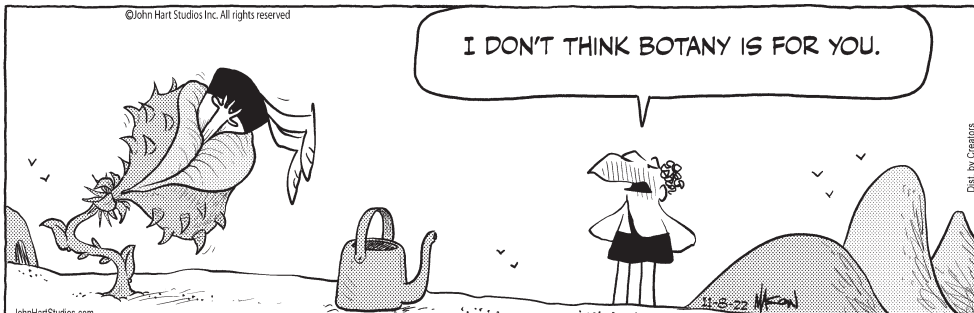
## FLO AND FRIENDS



## PEANUTS



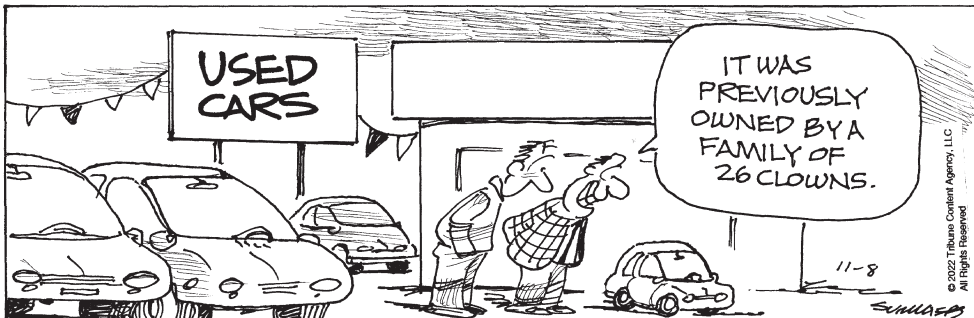
## B.C.



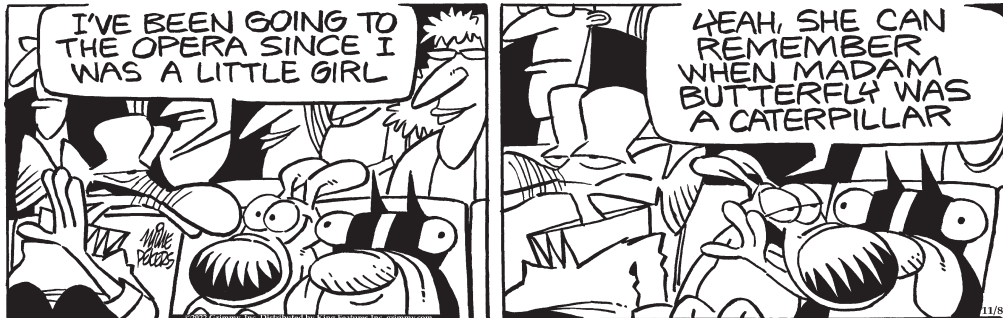
## PICKLES



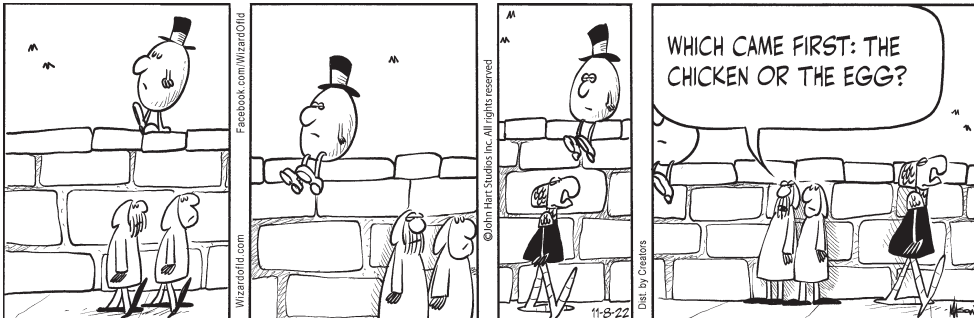
## BOUND & GAGGED



## MOTHER GOOSE & GRIMM



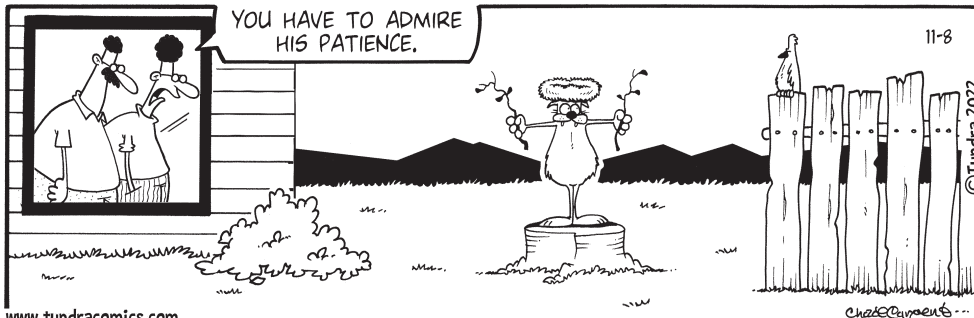
## THE WIZARD OF ID



## BREAKING CAT NEWS



## TUNDRA



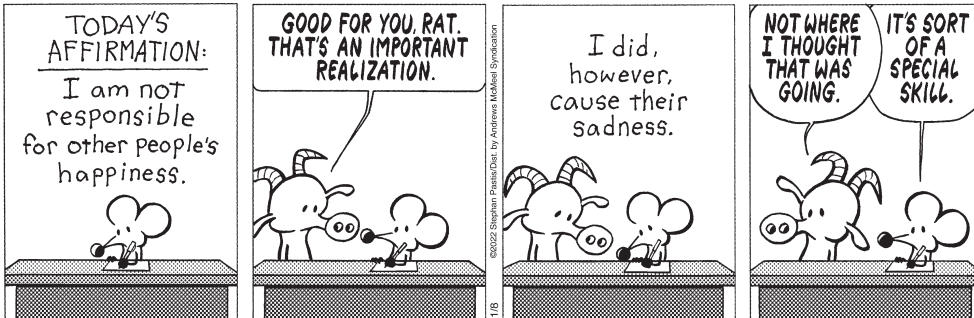
## RUBES



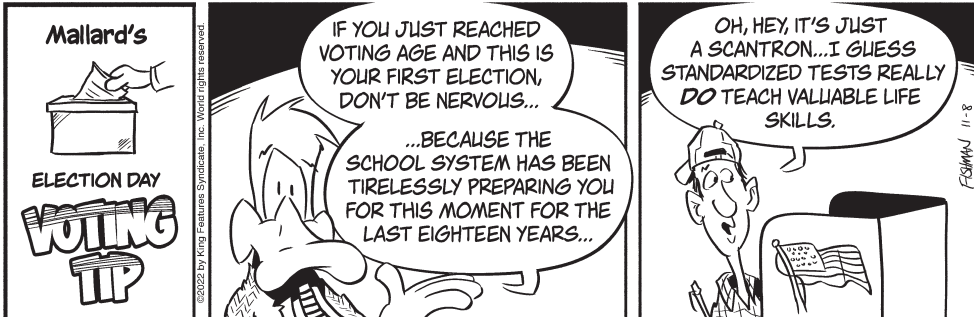
## CLOSE TO HOME



## PEARLS BEFORE SWINE



## MALLARD FILLMORE



**EAT LOCAL**  
**READ LOCAL**

Local businesses and restaurants need your support more than ever. Whether you visit stores, get delivery or shop online, keep your spending local and keep your community healthy.

Newspapers are LOCAL. We are dedicated to keeping you informed, safe and connected and care about the issues that are important to our neighbors, our schools and our businesses.

When you support your local newspaper, you support your community.

**SUPPORT LOCAL**  
**SUPPORT YOUR NEWSPAPER**  
**SUBSCRIBE TODAY**

**THE OBSERVER**  
 541-963-3161

**Baker City Herald**  
 541-523-3673

**America's Newspapers**

America's Newspapers is a national supporting journalism and healthy newspapers in our local communities. Find out more at [www.newspapers.org](http://www.newspapers.org) or follow us on Twitter @newspapersorg or on Facebook @americasnewspapers.