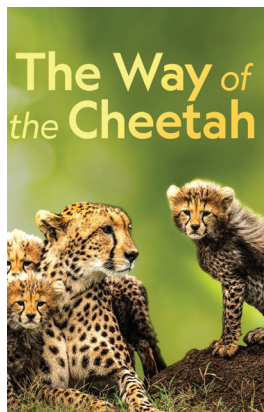


What's Available NOW On



“The Way of the Cheetah” (Available now)
From Nat Geo Wild and filmmakers Dereck and Beverly Joubert (“Okavango: River of Dreams,” “Eye of the Leopard”) comes this 2022 documentary that follows a female cheetah as she protects her four cubs from various predators and other male cheetah in the Mara ecosystem in Kenya.



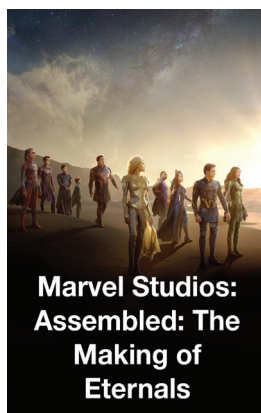
“Marvel Super Hero Adventures: Frost Fight” (Available now)
This 2015 holiday-themed direct-to-video animated actioner from the Marvel universe follows the Marvel Heroes as they unite to try and stop Loki and the frost giant Ymir from conquering the world as the duo try to steal Santa’s powers to do so. Mick Wingert, Matthew Mercer and Travis Willingham head the voice cast. (ORIGINAL)



“The Wonderful Winter of Mickey Mouse” (Available now)
The second season of “The Wonderful World of Mickey Mouse” consists of four extended-length specials that take on the theme of each season — winter, spring, summer and fall — as it spotlights the endearing, adventurous and comedic antics of Mickey Mouse. The first, “Winter,” follows Mickey as he takes his friends through three stories. (ORIGINAL)



“Marvel Studios: Assembled: The Making of Eternals” (Available now)
This in-depth look at the making of “Eternals” — director Chloe Zhao’s 2021 Marvel film actioner that stars Gemma Chan, Angelina Jolie and Kit Harington — takes viewers behind the scenes with on-set footage, conversations with stars and filmmakers, and other segments. (ORIGINAL)



Cast of “I Love Lucy”



triviaquiz BY JOHN CROOK

Funny Ladies

Questions:

- 1) In what year did “I Love Lucy” premiere: 1951, 1952 or 1953?
- 2) Who has won more Primetime Emmy Awards, Mary Tyler Moore or Carol Burnett?
- 3) What fearless female clown is perhaps best remembered as an original and invaluable cast member of Sid Caesar’s “Your Show of Shows”? (Hint: She and Caesar did a memorable spoof of “From Here to Eternity.”)
- 4) What recently departed TV favorite made her sitcom debut in the 1953-55 comedy “Life With Elizabeth”?
- 5) What outlandishly dressed stand-up comic frequently made fun of her fictional husband, “Fang”?

- Answers:**
- 1) “I Love Lucy” premiered Oct. 15, 1951, on CBS
 - 2) Moore has won seven Primetime Emmys; Burnett has won six
 - 3) Imogene Coca
 - 4) Betty White
 - 5) Phyllis Diller

Hosted by the Island City Lions Club

Locked & Loaded 2022

La Grande Gunshow

Sat. March 12 • 9 to 5 & Sun. March 13 • 9 to 1
@ the Blue Mountain Conference Center • 404 12th Street
Background checks will run and ATM on site.
Breakfast and lunch to be served Saturday.

In Memory of Shelia Evans who did so much for our community.
Sponsors & Vendors call Kayla at 541.786.7210

IT'S IN YOUR INBOX

before your mailbox

Subscribers can receive daily email updates and uninterrupted digital delivery on a computer, tablet and smartphone

Sign up for free digital access

THE OBSERVER Call 800-781-3214
LaGrandeObserver.com

IT'S IN YOUR INBOX

before your mailbox

Subscribers can receive daily email updates and uninterrupted digital delivery on a computer, tablet and smartphone

Sign up for free digital access

Baker City Herald Call 800-781-3214
BakerCityHerald.com